

THE WORLD'S GREATEST BOOKSHOP

**FOYLES**  
★ ★ FOR BOOKS ★ ★

FAMED CENTRE FOR  
*Medical Books*

‘ That’s what I call quick service—I telephoned Foyles at 10 a.m. and the book (although it was out-of-print) reached me by the next morning’s post. ’

—A Customer’s Letter

**119-125 CHARING CROSS ROAD, LONDON W.C.2**

Gerrard 5660 (20 lines)



Open 9—6 (including Saturdays)

Nearest Station : Tottenham Court Road

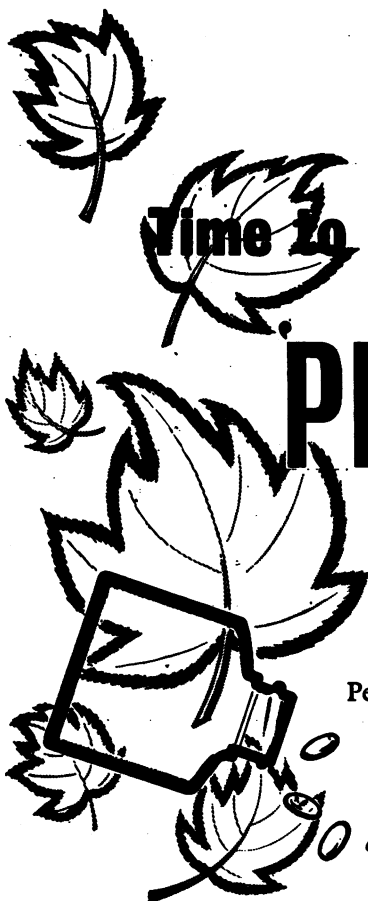
THE  
**FLORENCE NIGHTINGALE HOSPITAL**  
for Gentlewomen  
**19 Lisson Grove, London, N.W.1**

*Telephone: Paddington 2341*

**FOR EDUCATED WOMEN OF LIMITED MEANS AND  
THOSE OF THE PROFESSIONAL CLASSES**

NEITHER CONTROLLED NOR SUPPORTED BY THE STATE, THIS HOSPITAL offers EVERY FACILITY to PHYSICIANS and SURGEONS, with private accommodation for their patients, at a cost of 8 or 11 guineas for a private room; 4 guineas for cubicle.

For further particulars apply to the Secretary.



Time to remember

# PERNIVIT

TRADE MARK

## for chilblains

Pernivit is effective in the treatment and subsequent prevention of chilblains.

Pernivit contains nicotinic acid and vitamin K, to *improve circulation, combat arterial spasm and maintain the integrity of the blood vessel walls.*

### DOSAGE

ADULTS: two to six tablets daily immediately after meals

CHILDREN: half this dosage

**'PERNIVIT'**  
tablets

Bottles of 50 at 2/-; Bottles of 500 at 11/8  
Basic N.H.S. prices

*Literature and specimen packings are available on request.*

THE BRITISH DRUG HOUSES LTD. (Medical Department) LONDON N.1



# CASSELL MEDICAL BOOKS

---

## INTRODUCTION TO BIOSTATISTICS

HULDAH BANCROFT

This introduction to the use of statistics in medicine is presented simply, in non-technical language. 42/- net

## PROBLEMS OF FERTILITY IN GENERAL PRACTICE

JOHN STALLWORTHY, KENNETH WALKER, JOAN MALLESON,  
and MARGARET HADLEY JACKSON

"Can be confidently recommended to all who are interested in fertility problems."—*The Practitioner*. 21/- net

## SEXUAL DISORDERS IN THE MALE

KENNETH WALKER and E. B. STRAUSS

"Most strongly recommended for its straightforward approach and practical helpfulness."—*Family Planning*. 21/- net

---

35 RED LION SQUARE, LONDON, W.C.1

# Law and Ethics for Doctors

42s.

STEPHEN J. HADFIELD

'This excellent book treats with accuracy and judgement the many practical problems which may nowadays confront a doctor outside the purely clinical field.'

*British Medical Journal*

'Outstandingly comprehensive.' *The Lancet*

EYRE & SPOTTISWOODE

## **E. & S. LIVINGSTONE, LTD.**

### **DISEASES OF THE NERVOUS SYSTEM**

*Ninth Edition.* By SIR FRANCIS WALSH, M.D., D.Sc., F.R.C.P., F.R.S.  
390 pages 89 illustrations 30s.

### **CLINICAL CHEMISTRY IN PRACTICAL MEDICINE**

*Fifth Edition.* By C. P. STEWART, M.Sc., Ph.D., and D. M. DUNLOP, M.D., F.R.C.P.  
350 pages 30 illustrations 27s. 6d.

### **LEPTOSPIROSIS IN MAN AND ANIMALS**

By J. M. ALSTON, M.D., F.R.C.P. Ed., and JOHN C. BROOM, O.B.E., M.D.  
380 pages 40 illustrations 40s.

### **UROLOGY IN OUTLINE**

By T. L. CHAPMAN, Ch.M., F.R.C.S., F.R.F.P.S.G.  
184 pages 673 illustrations 27s. 6d.

### **OUTLINE OF FRACTURES, INCLUDING JOINT INJURIES**

*Second Edition.* By JOHN CRAWFORD ADAMS, M.D., F.R.C.S.  
274 pages 327 illustrations 27s. 6d.

### **TEXTBOOK OF MEDICAL TREATMENT**

*Seventh Edition.* Edited by D. M. DUNLOP, M.D., F.R.C.P., SIR STANLEY DAVIDSON, M.D., F.R.C.P., and S. ALSTEAD, M.D., F.R.C.P.  
944 pages 33 illustrations 55s.

**TEVIOT PLACE, EDINBURGH**

# **THE LANCET**

**ESTABLISHED 1823**

*The Senior Journal in Medical Science and Practice*

**PUBLISHED EVERY FRIDAY . Price One Shilling and Sixpence**

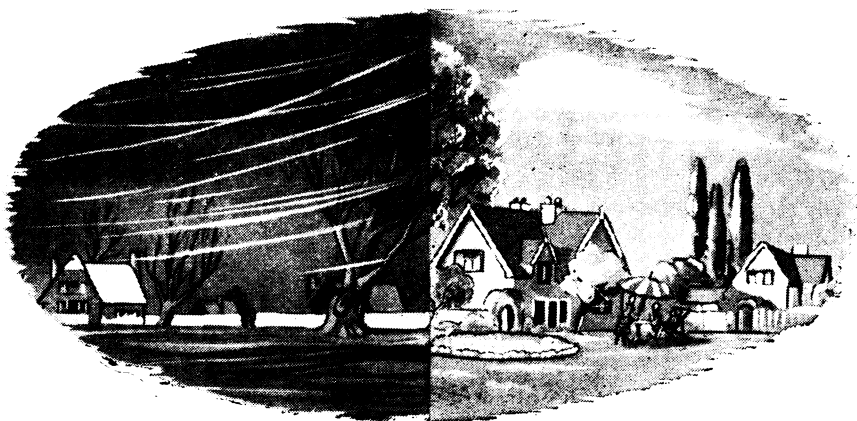
IN its 135th year THE LANCET retains its original keenness. It offers practitioner and specialist a weekly stimulus of fresh ideas and information. It applies medical knowledge to everyday life and the problems of to-day and to-morrow. Its original articles include many valuable contributions from abroad: its correspondence columns have become a world centre for medical discussion; and its editorials continuously review changes in medical opinion and practice. With the help of recognized experts, it tries to keep the specialist in touch with the rest of medicine. It is responsible yet independent: no labour is spared to maintain both its historic prestige and its interest for every doctor.

### **TERMS OF SUBSCRIPTION**

The Annual Subscription both Inland and Abroad is £3 . 3 . 0 post free, and Subscriptions payable in advance can commence from any date. Cheques and Postal Orders (crossed Westminster Bank Ltd., Covent Garden Branch) should be made payable to The Manager, THE LANCET, Ltd.

**7 ADAM ST., ADELPHI, LONDON, W.C.2, ENGLAND**

**ALL THE YEAR ROUND**



# COSCOPIN

TRADE MARK

**FOR  
MORE EFFECTIVE  
CONTROL OF COUGH**

Recent publications show that  
**COSCOPIN**-noscapine (formerly known  
as narcotine) **IS CLINICALLY MORE  
EFFECTIVE THAN CODEINE IN  
THE SUPPRESSION OF COUGH\***

*Amer. J. med. Sci. (1957,) 234, 191*

*\*Dis Chest (1957.) 32, 305*

**PRESENTATION**

**COSCOPIN LINCTUS**

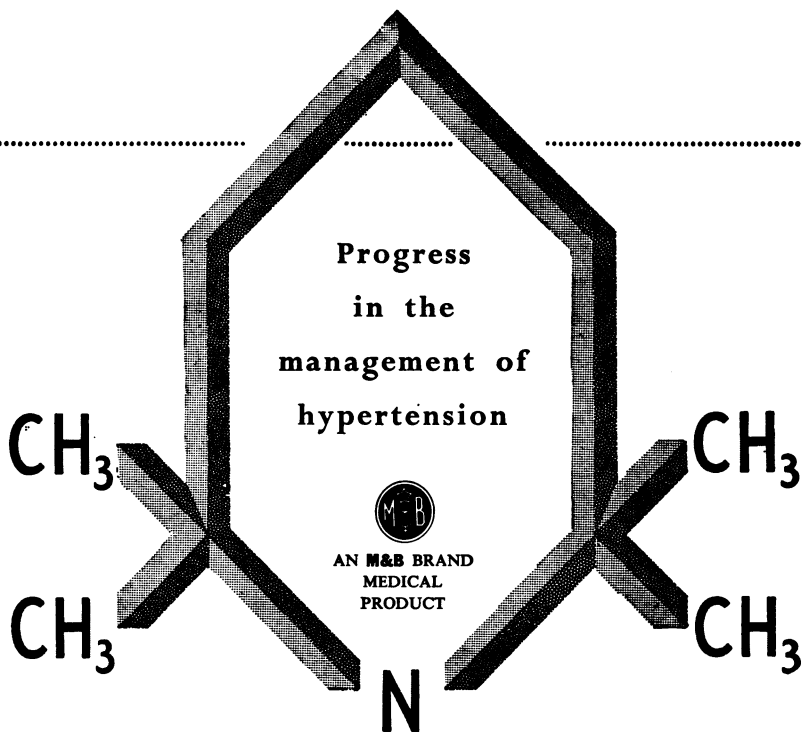
Bottles of 4 fl. ozs. (114 ml.) and 2 litres

**COSCOPIN LOZENGES**

Catch-cover of 20 lozenges



**EVANS MEDICAL SUPPLIES LTD**  
LIVERPOOL AND LONDON



Important M&B contributions in this field include 'Vegolysen' brand hexamethonium bromide in 1950, 'Vegolysen' T brand hexamethonium tartrate in 1952, 'Ansolysen' brand pentolinium tartrate in 1953, and now the latest addition — 'Perolysen' brand pempidine tartrate.

'Perolysen' is a new oral ganglion blocking agent synthesised in the May & Baker research laboratories. Clinical studies have shown it to be an effective, safe, and easily manageable hypotensive drug. 'Perolysen' is presented as tablets of 5 mg. and 10 mg. in containers of 50 and 500.

*The basic N.H.S. prices (excluding purchase tax) are:  
25 x 5 mg. tablets 3s. 9d. and 25 x 10 mg. tablets 6s. 8d.*

Reference: "Pharmacology and clinical use of Pempidine in the treatment of Hypertension" *Lancet* (1958), ii, 6

**'PEROLYSEN'**  
trade mark PEMPIDINE TARTRATE brand

MA5527

(MANUFACTURED BY MAY & BAKER LTD).  
 DISTRIBUTORS: PHARMACUTICAL SPECIALISTS (MAY & BAKER) LTD . DAGENHAM



## *For expectant and nursing mothers*

THE value of "Ovaltine" for the pregnant and nursing mother has long been recognized by physicians. This delicious food beverage has many qualities which make it eminently suitable for inclusion in the mother's diet.

"Ovaltine" contains malt, milk, cocoa, soya, eggs and added vitamins. It provides concentrated nutriment in a palatable form which appeals to the most capricious appetite, and it is easy to digest and assimilate. In addition, it stimulates the supply of breast-milk and helps to keep the mother strong and healthy during the nursing period.

You can confidently recommend your patient to take "Ovaltine" during pregnancy and when she is breast-feeding her baby.

# OVALTINE

M401

VITAMIN STANDARDIZATION PER OZ

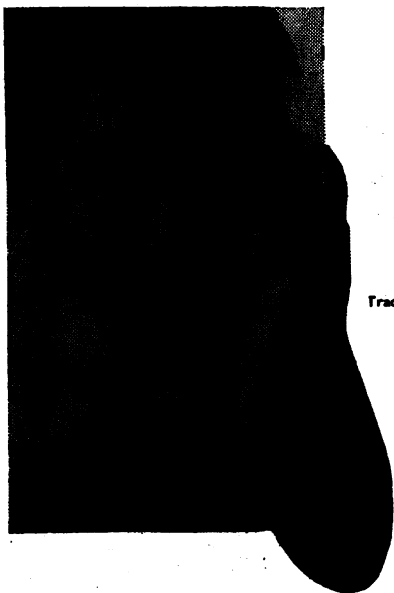
*Vitamin B<sub>1</sub>*, 0.3 mg.;

*Vitamin D*, 350 i.u., *Niacin*, 2 mg.

A. WANDER LTD., 42 Upper Grosvenor Street, Grosvenor Square, London W.1.

*Manufacture, Farms and Ovaltine Research Laboratories 'King's Langley, Herts.*





*Announcing*

**SYRUP**

Trade **'V-CIL-K'** Mark

**PAEDIATRIC**

This new paediatric syrup of 'V-Cil-K' gives even the youngest patient convenient and decisive penicillin therapy. Each 5 cc. contains 125 mg. penicillin V potassium — the most effective oral penicillin yet developed. Peak levels are attained within 30 minutes, from a syrup so pleasantly flavoured that regular dosage is assured.

The dose is  $\frac{1}{4}$  to 1 teaspoonful four times daily.

Available in bottles to make 30 cc. and 60 cc., each with a 5 cc. plastic spoon.

**SYRUP**  
**'V-CIL-K'**  
PENICILLIN V POTASSIUM

*Lilly*

ELI LILLY AND COMPANY LIMITED • BASINGSTOKE • ENGLAND





To aid the Physician's responsibility in planned parenthood

**Delfen** vaginal cream  
TRADE MARK

A new spermicide of unmatched potency  
applied by measured-dose applicator



Ortho Pharmaceutical Limited  
High Wycombe · England

# Butterworth Books

## THE BORDERLAND OF EMBRYOLOGY AND PATHOLOGY

By R. A. WILLIS, D.Sc., M.D., F.R.C.P.

Pp. xii + 627 + Index. 250 illustrations. 90s. net, by post 2s. 3d. extra.

Professor Willis's new book is based on his conviction that embryologist and pathologist have much to gain from a better knowledge of the other's subject. By reviewing particular fields of enquiry and incorporating the accumulated facts in relationship to others he has achieved a well-balanced survey which will be of immense value to embryologists, pathologists and paediatric clinicians.

## RADIOISOTOPE TECHNIQUES IN CLINICAL RESEARCH AND DIAGNOSIS

By N. VEALL, B.Sc., F.INST.P. and H. VETTER, M.D.

Pp. xii + 404 + Index. 74 illustrations. 50s. net, by post 1s. 9d. extra.

Although there has recently been some easing of the restrictions on the use of isotopes, the medical profession generally is not aware of their immense value, particularly diagnostically. This book covers the fundamental principles of isotope methods, instrumentation and clinical applications representing the accumulated knowledge and experience of a decade of intensive research, development and therapeutic application.

## BURNS—*Pathology and Therapeutic Applications*

By SIMON SEVITT, M.D., M.Sc., M.A., F.R.C.P.I., D.P.H.,

Pp. viii + 336 + Index. 85 illustrations. 37s. 6d. net, by post 2s. extra.

This book, the first to be devoted to the pathology of burns, interprets the significance of pathological findings and inter-relates pathology, clinical picture and treatment, not only in thermal burns, but in electrical, chemical and radiation burns. Its essentially modern and practical approach makes the work of immense value to all medical men concerned with the burned patient.

## MODERN TRENDS IN ANAESTHESIA

Edited by FRANKIS T. EVANS, M.B., B.S., F.F.A.R.C.S., D.A. and T. CECIL GRAY, M.D., F.F.A.R.C.S.

Pp. viii + 320 + Index. 70 illustrations. 67s. 6d. net, by post 1s. 9d. extra.

This new work covers among other subjects the theory and practice of techniques of hypothermia, the many recent anaesthetic drugs and the controversial subject of hypnosis and brings forward new concepts of consciousness and unconsciousness. The authors express personal ideas and opinions and indicate the direction in which their specialty is moving.

**BUTTERWORTHS, 88 KINGSWAY, LONDON, W.C.2**

**Showroom: 11-12 BELL YARD, TEMPLE BAR, LONDON, W.C.2**

**New**

**for Parkinson's Disease**

# **Aturbane**

**$\alpha$ -phenyl- $\alpha$ -(diethylaminoethyl)-  
glutarimide hydrochloride**

Reduces muscular rigidity

Diminishes tremor and excessive salivation

Potent and well-tolerated

Preferred by patients

*Bottles of 25, 100 and 250*

*Reference: Brit. Med. J. (1958) 1,928*

**C I B A**

*'Aturbane' is a registered trade mark. Reg. user*

**CIBA LABORATORIES LIMITED, HORSHAM, SUSSEX**

## *Elegance with Efficiency*



*New effervescent*  
**'REDOXON'**

With 'Redoxon' effervescent tablets 1G. a glass of water can be transformed into a pleasing effervescent drink containing a massive dose of Vitamin C. Such doses are indicated in the treatment of the *first manifestations of the common cold* and other febrile conditions in which the reserves of Vitamin C are rapidly depleted.

'Redoxon' effervescent tablets 1G. are supplied in tins of 10.

ROCHE PRODUCTS LIMITED, 15 MANCHESTER SQUARE, LONDON, W.1



# Ames

## ROUTINE URINE TESTS

—reliable, quick, no external heating—

A NEW COLOUR TEST

For **PROTEIN** \_\_\_\_\_

**\*ALBUSTIX**

reagent strips

For **BLOOD** \_\_\_\_\_

**\*OCCULTEST**

reagent tablets

For **GLUCOSE** \_\_\_\_\_

**\*CLINISTIX**

reagent strips

For **BILIRUBIN** \_\_\_\_\_

**\*ICTOTEST**

reagent tablets

For **KETONES** \_\_\_\_\_

**\*ACETEST**

reagent tablets

... and, of course, for reliable estimation of

**SUGAR** \_\_\_\_\_

**\*CLINITEST**

reagent tablets

Range of six simplified urine tests for General Practitioners, hospitals, clinics and laboratories.

Please write for illustrated leaflet and references.

\*Acetest\* and \*Clinitest\* are available under the N.H.S. on form E.C.10.

(See drug tariff)

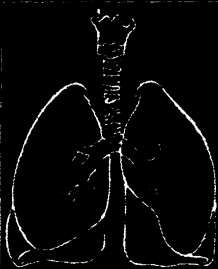
\*Trade Marks



**AMES COMPANY (LONDON) LTD**

NUFFIELD HOUSE, PICCADILLY, LONDON, W.1 Telephone: REGent 5321

**INTO ACTION  
AGAINST  
CHRONIC  
BRONCHITIS**



**ADEXOLIN\***

VITAMINS A & D. Builds up resistance.

**HAEMOPHILUS  
INFLUENZAE  
VACCINE *Glaxo***

Hypersensitivity to *Haemophilus influenzae* is thought to be an important contributory cause of attacks of bronchitis and the use of a properly prepared vaccine, as an adjunct to other measures, may contribute beneficially to control of the disease.

**CRYSTAMYCIN\***

**PENICILLIN-STREPTOMYCIN.** The immediate treatment of choice in acute exacerbations of bronchitis.

**BIOTEXIN\***

**NOVOBIOCIN.** Produces high and sustained antibacterial activity in the blood more rapidly than any other oral antibiotic. May be used alone or as a reinforcement for Crystamycin.

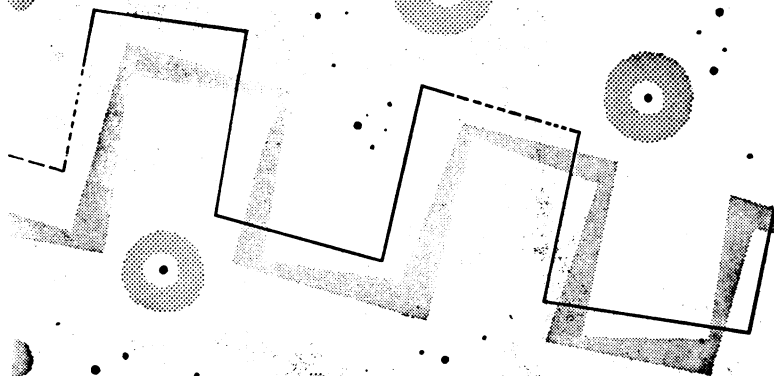
**COMPLAN\***

**THE COMPLETE FOOD.** Complete nourishment for the patient unable or unwilling to swallow solids.

*\*Glaxo trade marks*



GLAXO LABORATORIES LTD., GREENFORD, MIDDLESEX. BYRON 3434  
Subsidiary companies or agents in most countries



MANUFACTURED BY  
**MAY & BAKER LTD**

# 'Stemetil'

trade mark

brand

**PROCHLORPERAZINE MALEATE**

'Stemetil' is advocated for the prevention of attacks of migraine or to lessen their frequency or severity; for this purpose it is given continuously in a low dosage. It may also be used, in a higher dosage, at the prodromal stage, with a view to aborting the attack or relieving the symptoms. Choice of these two methods of use will depend on the frequency of the attacks. The drug is of prophylactic use in those cases wherein attacks of true migraine are induced by emotional upsets such as travelling or excitement. This is not to be confused with headache of psychogenic origin which is not true migraine and appears to be resistant to the drug. 'Stemetil' is also indicated in labyrinthine disorders including Ménière's syndrome, giddiness of other origins (except when due to streptomycin), and vomiting. Possible applications in psychiatry are being studied.

*Detailed information is available on request.*

**PRESENTATIONS:**

*Tablets of 5 mg.      Suppositories of 25 mg.*

**DISTRIBUTORS:**  
**PHARMACEUTICAL SPECIALITIES (MAY & BAKER) LTD · DAGENHAM**

# The esters of NICOTINIC, SALICYLIC and p-AMINO BENZOIC acids bring relief to cases of arthritis and rheumatism

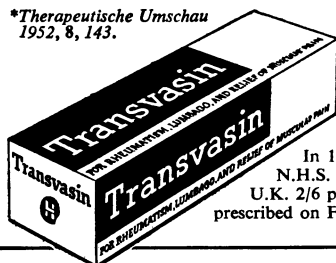
IN CASES of soft-tissue rheumatism, and arthritic disorders, many doctors are tending more and more to regard Transvasin as an indispensable adjuvant to treatment.

For Transvasin is composed of the esters of nicotinic, salicylic and p-aminobenzoic acids. These esters readily pass the skin barrier in therapeutic quantities, and so enable an effective concentration of drugs to be built up where they are needed.\*

Transvasin not only induces vasodilation of the skin with a superficial erythema, but also brings about a deep hyperaemia of the underlying tissues. It is non-irritant and can be safely used on delicate skins.

It is now being widely prescribed, with successful clinical results. Since a very small quantity is sufficient for each application, the cost of treatment is extremely low.

*\*Therapeutische Umschau  
1952, 8, 143.*



In 1 oz. tubes, basic  
N.H.S. price in the  
U.K. 2/6 plus P.T. May be  
prescribed on Form E.C.10.

Tetrahydrofurfuryl salicylate.....	14%
Ethyl nicotinate.....	2%
n-Hexyl nicotinate.....	2%
Ethyl p-aminobenzoate.....	2%
Water-miscible cream base ad.....	100%



*"Thank you, doctor"*

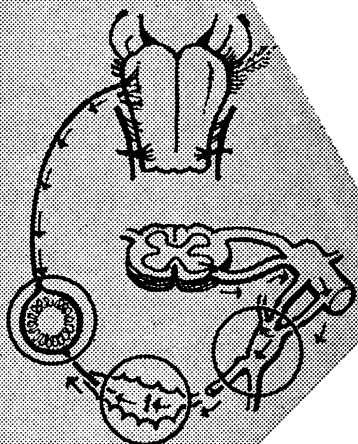
## LLOYD-HAMOL LTD

11 WATERLOO PLACE, LONDON, S.W.1. TELEPHONE WHITEHALL 8884/8/9

*Transvasin is the registered trade mark of Lloyd-Hamol Ltd.*



# *Effective and safe treatment of Peptic Ulcer*



## **Pro-Banthine**

BRAND OF PROPANTHELINE BROMIDE

Pro-Banthine is the standard anticholinergic drug which, in properly adjusted dosage, effectively suppresses gastric hypermotility, reduces the volume of gastric secretion and encourages healing of all types of peptic ulcer. By suppressing gastric motility a test dose will help to provide a clear X-ray picture for diagnosis.

### **ORALLY**

Both PRO-BANTHINE (15 mg.) and PRO-BANTHINE with Phenobarbitone (15 mg. of each) are available in sugar-coated tablets in bottles of 40, 100 and 1,000 tablets.

### **PARENTERALLY**

1 c.c. vials containing 30 mg. of PRO-BANTHINE as a dry, sterile powder for preparation of intramuscular or intravenous injections are available in boxes of 6 and 25 vials.

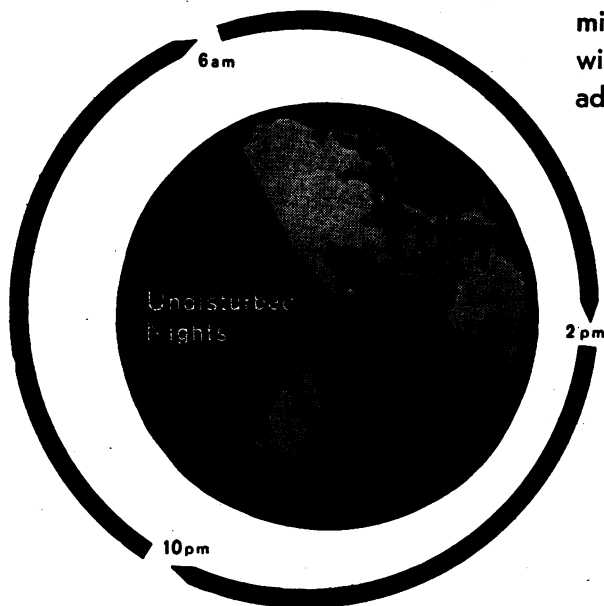
**SEARLE**

**HIGH WYCOMBE, BUCKS.**

# New

# Dosulfin<sup>®</sup>

a long-acting  
mixed Sulphonamide  
with the following  
advantages



**Long dosage intervals**

**Undisturbed nights**

**Low dosage**

*Further details on request*

#### Availability

Tablets 0.75 g.

Containers of  
32 and 100

Syrup 10  
(with measure)

Bottles 50 ml.

① Regd. Trade Mark

**Dosulfin consists of  
equal parts of  
Sulphaproxyline and  
Sulphamerazine**

**Geigy Pharmaceutical Company Ltd.  
Manchester 23**

PH.121a

---

# **“IMPROVED THERAPY FOR PEPTIC ULCER”**

---

**Extract from the American Journal of Gastroenterology (1957), 28, 439.**

“The medication investigated is known as Roter tablets . . . The dosage employed in the treatment of gastric or duodenal ulcer was 2 tablets, taken three times a day with tepid water immediately after meals . . . this therapy is applicable to ambulatory patients.”

## **SUMMARY**

“In a series of 155 cases of peptic ulcer treated with . . . (Roter) tablets for three to six weeks, there was immediate relief of pain in 92 per cent of cases and roentgenological healing of the ulcer in 81 per cent. The average weight gain was 7.9 lbs. and occult blood disappeared from the stools in all of the six cases in which it was found.

“The benefit provided by the medication is attributed to the minute particulation of the bismuth subnitrate, produced by a special process of trituration in association with a synergistic antacid combination.

“The special features of this medication are immediate and prolonged relief of pain, correction of gastric hyperacidity, absence of side reactions, effectiveness for ambulatory patients, and early healing of the ulcer in most cases.

“There was no acid rebound in therapeutic dosage and no adverse effects were reported.”

---



---

**PACKINGS:** Tins of 40, 120, 640 and dispensing size 720  
(P.T. exempt). Basic N.H.S. price : 1/- for 10 tablets.

**ROTER may be prescribed on E.C.10 forms. Literature and samples on request.**

**F.A.I.R. LABORATORIES LTD. • TWICKENHAM • MIDDLESEX**

---

# **THE COLLEGE OF GENERAL PRACTITIONERS**

## **41 Cadogan Gardens, London, S.W.3**

### **Associateship**

Any registered (or provisionally registered) medical practitioner is eligible for admission as an associate, provided he gives an undertaking that if he enters or remains in general practice he will continue approved postgraduate study and will uphold and promote the aims of the College to the best of his ability.

(A provisionally registered medical practitioner shall cease to be an associate if he fails to obtain registration within two years of qualification.)

### **Membership**

The Council of the College admits to membership, after consultation with the Board of Censors, registered medical practitioners who have been qualified for not less than seven years and have been engaged in general practice for not less than five years or, as an associate, for three years.

An applicant for membership must :— (1) be proposed and seconded by two members of the College—not being in partnership with each other. (2) Submit evidence concerning his practice, experience, and academic and administrative achievements. (3) Submit himself to an interview with the board of censors, if required. (4) Give an undertaking that he will continue approved postgraduate study while he remains in active general practice, and that he will uphold and promote the aims of the College to the best of his ability. The Council may seek supporting evidence of his eligibility from his sponsors, the board of the faculty in whose area he resides, and, if so required, from others whom he or his sponsors may choose to appoint.

### **Entrance Fees and Subscriptions**

Associates make an annual subscription of £2 2s. 0d. but pay no entrance fee. Members are required to pay an entrance fee on admission of £10 10s. 0d. and make an annual subscription of £3 3s. 0d.

Forms of application for admission to associateship and membership may be obtained from The Secretary, The College of General Practitioners, 41 Cadogan Gardens, London, S.W.3. 'Phone Sloane 8333.