

# THE PRACTITIONER

*The Leading Monthly Medical Journal*

Founded



in 1868

## Recent Issues 1968

### Special Numbers:

Clinical Pharmacology (*January*)  
Retrospect and Prospect (*July*) Enlarged Centenary Issue  
Advances in Treatment 1968 (*October*)

### Symposia

The Problem of Addiction (*February*)  
The Toddler (*March*)  
Endocrinology (*April*)  
Diseases of the Skin (*May*)  
Care of the Elderly (*June*)  
Diet and Nutrition (*August*)  
Renal Disease (*September*)  
Disorders of the Hands and Feet (*November*)  
Winter Ailments (*December*)

## Forthcoming Issues 1969

Dermatological Drugs and Dressings (*January*)  
(**Special Number**)  
Coronary Disease (*February*)  
Gynaecology (*March*)

---

### THE ECONOMICS OF GENERAL PRACTICE

The Economics of General Practice Supplements are sent free to all subscribers as published


---

The annual subscription is £3 post free (home and overseas)  
Single copies 5s. each (postage 1s. 6d.) Special Numbers 10s. each (postage 1s. 9d.)

### SUBSCRIBE NOW

orders with remittance to The Manager,  
The Practitioner, 5 Bentinck Street, London, W.1

# The rising cost of depression



The cost is considerable – in human suffering, in time spent in medical care, and in the number of drugs involved in treatment. 'Surmontil' cuts costs because it is a single compound with both antidepressive and psychosedative activity. 'Surmontil' reduces the need to prescribe concurrently two or three types of drug – an antidepressive, an anxiolytic and a hypnotic.

## Surmontil cuts the cost

'Surmontil'\* is presented as tablets containing 25 mg. and 10 mg. trimipramine, and as injection solution, 12.5 mg. per ml.

An M&B brand Medical Product.

Further information is available on request  
MAY & BAKER LTD Dagenham Essex



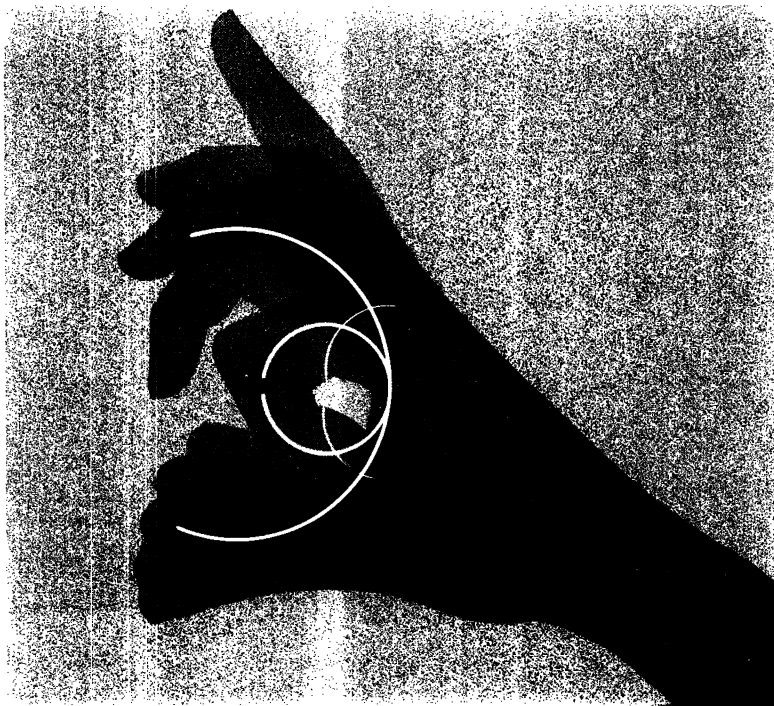
\*trade mark

MA4808

**Geigy**

**Tanderil®**

**Helps  
arthritic joints  
to move  
again**



**Tanderil®**

**Major non-hormonal  
antirheumatic agent**

**Freedom from pain  
Reduction in morning  
stiffness  
Improvement in grip  
strength  
Decrease in joint swelling  
Increased mobility**

**Tanderil® is available as  
tablets containing 100 mg  
and as suppositories  
containing 250 mg of  
1-phenyl-2-p-hydroxy-  
phenyl-3, 5-dioxo-4-n-  
butylpyrazolidine  
monohydrate.**

**Detailed literature  
describing Tanderil or any  
other Geigy product will be  
supplied on request.**

**Geigy (U.K.) Limited  
Pharmaceuticals Division  
Macclesfield, Cheshire**

**In Bronchitis**

---

# SEPTRIN

---

Trade Mark

**Abolishes pathogens, renders  
sputum mucoid and dramatically  
decreases sputum volume\***

---

New mode of bactericidal action. An advance on antibiotic therapy. Reduces or eliminates problems of bacterial resistance, disturbance of gut flora and other troublesome side-effects. Exceptionally rapid clinical effect in respiratory tract; urinary tract and other infections caused by a wide range of sensitive organisms – Gram-positive and Gram-negative.

---

**'Septrin' tablets**

Each contain trimethoprim 80 mg,  
sulphamethoxazole 400 mg.

**'Septrin' Paediatric  
tablets**

Each contain trimethoprim 20 mg,  
sulphamethoxazole 100 mg.



\* Proceedings of the V International Congress of Chemotherapy; Supplement; (A 1-5a/3) 107,  
Further information is available on request.

**Burroughs Wellcome & Co. (The Wellcome Foundation Ltd.) London**

## *In the elderly, the special problems of constipation...*



Constipation in the elderly can present special problems of treatment. Weakened abdominal muscles... the dangers inherent in straining... refusal to co-operate... the presence of pain, to which anal fissures or haemorrhoids may contribute... the need for enemas and suppositories... the risk of faecal impaction, with consequent manual removal...

*Dorbanex* can simplify management of the patient posing these problems by providing comfortable, reliable and trouble-free evacuation. *Dorbanex* produces a soft but well-formed stool without griping or other unpleasant side-effects, reduces the need for enemas and suppositories, helps to prevent faecal impaction, and makes defaecation easier without increasing faecal incontinence.

## *...have a straightforward solution*

Now available in three forms—as capsules and in two strengths of liquid—*Dorbanex* provides in one preparation a balanced treatment for constipation. By softening the stool and stimulating peristalsis, *Dorbanex* prepares the way for pain-free evacuation.

**DORBANEX CAPSULES:** each contains 1:8-dihydroxyanthraquinone 25 mg., poloxalkol 200 mg. **DORBANEX LIQUID:** each 5 ml. teaspoonful contains 1:8-dihydroxyanthraquinone 25 mg., poloxalkol 200 mg. **DORBANEX FORTE:** each 5 ml. teaspoonful contains 1:8-dihydroxyanthraquinone 75 mg., poloxalkol 1000 mg. **Dosage DORBANEX CAPSULES:** Adults, one or two capsules. Children, one capsule. **DORBANEX LIQUID:** Adults, one or two teaspoonfuls. Children, half to one teaspoonful, as required. Before or after surgery: two to four teaspoonfuls or two to four capsules. **DORBANEX FORTE:** one teaspoonful, or as directed by the physician. Treatment should be taken at bedtime. **Contra-indications** In common with other gastro-intestinal evacuants, *Dorbanex* should not be given when acute, painful conditions of the abdomen are present, or the cause of constipation is suspected to be obstruction of the small or large intestine. **Side-effects** Dihydroxyanthraquinone may cause a temporary harmless, pink or red colouring of the urine and, in prolonged use or high dosage, of the mucosa of the large intestine. Doses larger than two teaspoonfuls may cause slight gastro-intestinal discomfort in a few patients. **Basic NHS Prices** *Dorbanex* Capsules: bottles of 30 capsules 8/8; bottles of 300 capsules 78 -. *Dorbanex* Liquid: bottles of 60 ml. 4/-; bottles of 500 ml. 30/-; *Dorbanex* Forte: bottles of 60 ml. 6/-; bottles of 500 ml. 45/-. Additional information on request.

## *Dorbanex prepares the way for pain-free, trouble-free evacuation*

Riker Laboratories Loughborough Leicestershire



now, for the  
first time  
a clinically  
proved  
***appetite  
stimulant***

'Periactin' induces a marked improvement in the appetite of many patients. The resulting weight gain is due only to the increased food intake—there is no disturbance of endocrine function, no evidence of fluid retention.

'Periactin' does not reproduce the effects of 'tonics', haematinics or vitamins.

'Periactin' acts promptly, and its dosage is simple.

'Periactin' will be invaluable for many of those situations in which patients, adults and children, require food and yet have no appetite for it.

Supplied as tablets containing the equivalent of 4 mg anhydrous cyproheptadine hydrochloride, and as a syrup containing the equivalent of 2 mg anhydrous cyproheptadine hydrochloride in each 5 ml. Detailed information is available to physicians on request. ® denotes registered trademark.

***Periactin***®

Cyproheptadine hydrochloride BP



**Merck Sharp & Dohme Limited, Hoddesdon, Herts Telephone, Hoddesdon 67123**



## A UNIQUE ORAL GEL WITH STRIKING ANALGESIC AND ANTISEPTIC PROPERTIES

Bonjela has been shown in formal American trials to bring rapid relief from pain in 90% of all cases of oral ulceration, herpes labialis, gingivitis and denture sores. By rapid relief is meant marked alleviation of pain within 2-3 minutes.

Bonjela also promotes healing whenever the aetiology is partly or wholly bacterial. Some ulceration originates from endocrinal, viral or fungal causes which may require other forms of treatment.

Even in these cases where a bacterial element is superimposed on the

original infection Bonjela will reduce the severity of the infection and rapid relief from pain will be obtained.

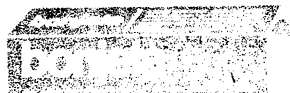
**FORMULA:** Choline Salicylate 8.7%, Cetalkonium Chloride 0.01%, Alc. (95%) 39.0%, Menthol 0.057%, Glycer 4.6%.

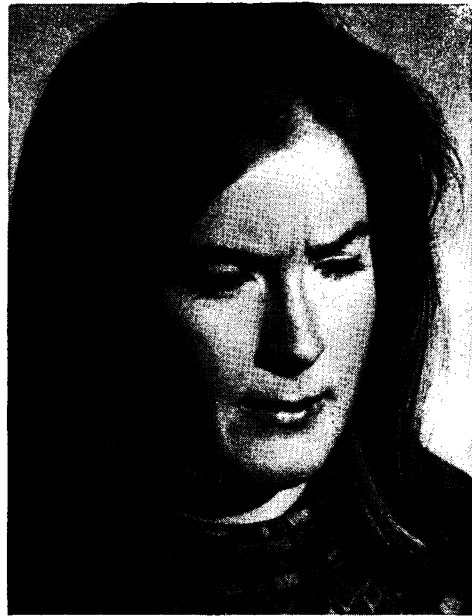
**INDICATIONS:** Herpes labialis, gingivitis, oral ulcerations, cheilosis denture sores, infant teething disorders.

**PRESENTATION:** Bonjela is available in 10 g. tubes at a basic N.H.S. cost of 2/8½d. per tube.

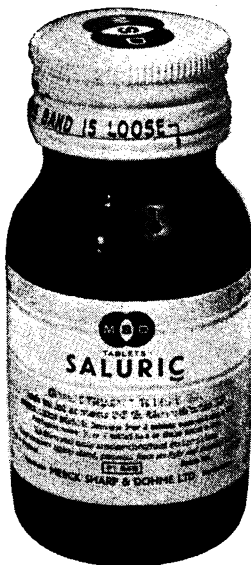
LLOYDS' PHARMACEUTICALS LTD.  
103 Mount Street, London, W.1.  
*An associate of Lloyd-Hamoll Ltd.*

Literature and samples are available on request





Women... can't help it



## 'Saluric'® can

in premenstrual tension with oedema

Women suffering from premenstrual tension with oedema cannot avoid the tiresome and inevitable signs and symptoms of this common condition, which may last from 7 to 10 days every month, prior to the menses. Because many of the distressing symptoms may be directly related to fluid retention, effective diuresis usually brings prompt relief.

'Saluric' can relieve swelling of the ankles, breast engorgement, and fullness of the abdomen. It may well help to alleviate the concomitant irritability and nervousness. 'Saluric' has been proved by 10 years of clinical experience to be a dependable diuretic which can be used month after month to control premenstrual tension with oedema.

Each tablet of 'Saluric' contains 500 mg chlorothiazide BP. Detailed information is available to physicians on request.

® denotes registered trademark.



**Merck Sharp & Dohme Limited, Hoddesdon**  
Hertfordshire Telephone, Hoddesdon 67123





## GOLF

It was the Scots who brought the game of golf to its greatest flowering, and it is the Royal and Ancient Club of St. Andrews which is supreme arbiter of the game today. It is they who lay down the rules, including the one, for instance, that says that the weight of the ball shall be not greater than 1.620 ounces avoirdupois and the size not less than 1.620 inches in diameter.

The NHS price of the 30 g. tube is 2/6d. plus P.T., and the cost of an average application of cream is under 1d. Literature and samples are available on request.

## TRANSVASIN

Patients suffering from rheumatic symptoms obtain rapid relief with this well-proven and economical medication. The esters of nicotinic, salicylic and aminobenzoic acids penetrate the skin and are concentrated at the point of injury, producing superficial erythema and deep hyperaemia. Transvasin is a valuable adjuvant in the treatment of osteo- and rheumatoid arthritis.

### CONTAINS

Ethyl Nicotinate .....	2%
Hexyl Nicotinate .....	2%
Tetrahydrofurfuryl Salicylate .....	14%
Ethyl Aminobenzoate .....	2%
Base .....	to 100%

LLOYD-  
HAMOL



**The standard treatment  
for rheumatic symptoms**

Lloyd-Hamol Ltd., 103 Mount Street, London, W.1

Transvasin is a Trade Mark

# All your fees paid, plus £790 a year and allowances, while a Medical student.

As a Medical Cadet in the Royal Army Medical Corps, all your tuition fees are paid by the Army. In addition, you are paid £790 a year, and are eligible for allowances.

You can apply for a Medical Cadetship if you have passed your second M.B. or its equivalent, are under 25, and have a place at a medical school in the United Kingdom or Eire. If you are about to take your second M.B., you may still apply; but your acceptance will be conditional on your passing the examination.

If accepted as a Medical Cadet, you are given the probationary rank of 2nd Lieutenant. On qualification, you are promoted Lieutenant, and are paid as such while you fulfil your pre-registration appointment

—either at a civilian hospital of your own choice, or at certain military hospitals. After being fully registered, you are promoted Captain, and take up your duties in the RAMC.

Your obligation is then for five years of service on a Short Service Commission. During those five years, you will have a good chance of travel, make many friends, have ample leave (six weeks' paid leave a year, with a locum provided by the Army).

During that period you can, if you like, apply for a Regular Commission. Or you can leave the Army for civilian practice, the richer for some valuable experience of General Practice—and for a tax-free gratuity of up to £2,600 according to period of cadetship.

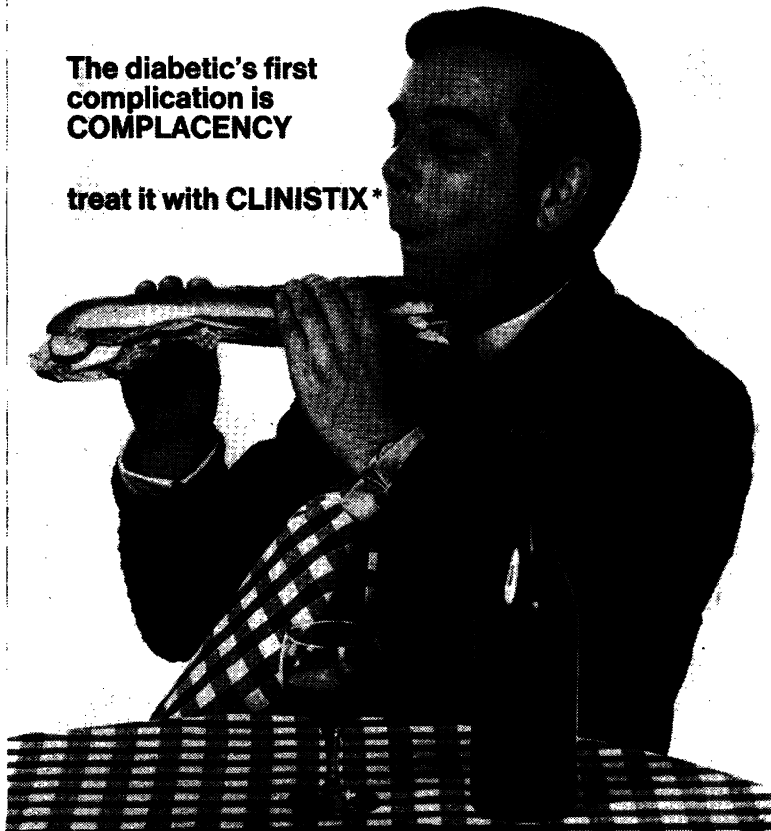
**For further information about Medical Cadetships, or to arrange a meeting with an RAMC Officer to answer any questions you may have, write to: Colonel E. L. O. Hood MB, Ministry of Defence (AMD2), Dept. 537, Lansdowne House, Berkeley Square, London W1X 6AA**

He cheats a little over exchanges . . . forgets his diet on holiday . . . and nothing very terrible happens – at the time. It's easy for the non-insulin dependent diabetic to lapse into complacency – but you can shake him out of it with CLINISTIX. You can make him understand that purple means danger – purple colour on the CLINISTIX is visible proof that control is slipping. Good control from the outset is essential if the risk of complications such as retinopathy and nephropathy is to be reduced: the patient who spends a few minutes a week on testing can save years of misery later.

For the insulin dependent diabetic prescribe CLINITEST\*. Both CLINISTIX and CLINITEST are prescribable on EC10.

**The diabetic's first  
complication is  
COMPLACENCY**

**treat it with CLINISTIX\***



Ames Company, Division of Miles Laboratories Limited,  
Stoke Court, Stoke Poges, Slough, Buckinghamshire. \* Trademark/AM666

# THE ROYAL COLLEGE OF GENERAL PRACTITIONERS

## Services provided for members

1. **The Geoffrey Evans Library** provides lists of references and a photocopying service.  
*Librarian:* Miss M. Hammond, 14 Princes Gate, London, S.W.7.
2. **Medical recording service and sound library**  
*Honorary directors:* Drs John and Valerie Graves, *O.B.E.*, Kitts Croft, Writtle, Chelmsford, Essex.
3. **Postgraduate Information Diary**  
*Information officer:* Education Committee of Council, 14 Princes Gate, London, S.W.7.
4. **Practice organization.** Library of architects' plans, photographs, descriptions of practice premises and advice on equipment.  
*Secretary:* Practice Organization Committee, Royal College of General Practitioners, 14 Princes Gate, London, S.W.7.
5. **Awards.** A number of Travelling Fellowships and prizes are in the gift of the College. Information is published periodically in the *College Journal*.
6. **Research Register, and Register of Research Projects**  
*Honorary registrar:* Dr R. M. Griffiths, 4 The Dell, Woodford Wells, Essex.
7. **The Records and Research Advisory Service.** Planning and statistical advice and processing for mechanical analysis of survey results or other records. Advice in planning, in contacting like-minded practitioners, advice in method, on any aspect of research work.  
*Honorary director:* Dr D. L. Crombie, 8 Albert Road, Harborne, Birmingham 17.
8. **Epidemic Observation Unit.** Collates observations of practitioners which might otherwise be lost.  
*Honorary director:* Dr G. I. Watson, Corran, Peaslake, nr. Guildford, Surrey.
9. **Grants.** Grants in aid of research are made from the funds of the Research Foundation. Advice as to other sources of finance for research and help with preparation of applications.  
*Honorary secretary/treasurer:* Dr E. V. Kuenssberg, 15 Warriston Crescent, Edinburgh 3 (or to 14 Princes Gate, London, S.W.7).
10. **College Club.** All members of the College are *ipso facto* members of the club at 14 Princes Gate, S.W.7, where bed and breakfast may be obtained at reasonable rates, and where members may meet friends. Members may, subject to approval, hire rooms for functions and meetings.  
*Administrative secretary:* Mrs E. Phillips, Royal College of General Practitioner, 14 Princes Gate, London, S.W.7.
11. **Journal.** Published monthly and circulated to all members and associates. Subscription to non-members, £4 4s. 0d. per annum.  
*Honorary editor:* Dr R. M. S. McConaghey, *O.B.E.* } Prospect House  
*Editorial manager:* Miss I. Scawn } Newcomen Road, Dartmouth

## Publications

Copies of the following publications may be obtained from E. & S. Livingstone, Limited, Teviot Place, Edinburgh.

<b>Reports from General Practice</b>		<b>Mental Health and the Family Doctor</b>	<b>5s.</b>
No. 1. Vocational Training	5s.	Rehabilitation	5s.
No. 3. Additional Payments for Wide Experience and Notable Service in General Practice	1s.	The Aetiology of Congenital Anomalies	7s. 6d.
No. 4. General Practice in the New Towns of Britain	6s.	The Early Stages of Chronic Bronchitis	10s. 6d.
No. 5. Evidence of the College of General Practitioners to the Royal Commission on Medical Education	6s. 6d.	Preventive Medicine in General Practice	10s. 6d.
No. 7. Education in Psychology and Psychiatry	7s. 6d.	The Quality of Medical Care	5s.
No. 8. General Practice in South-west England	7s. 6d.	Health in a Changing Environment	7s. 6d.
No. 9. Obstetrics in General Practice	7s. 6d.	Clinical Problems of Practice	8s. 6d.
		Anaemia in General Practice	6s.
		The Art of Listening	7s. 6d.
		Early Diagnosis	8s. 6d.
		The Age of Discretion	7s. 6d.
		The early detection of imported and endemic disease	7s. 6d.
<b>Symposia</b>		<b>Other Publications</b>	
Hazards of Middle Age	5s.	Training for General Practice (2nd Edition)	4s. 6d.
Problems of Sex	6s.	Epidemic Winter Vomiting	1s.
The Art and Science	7s. 6d.	On Undergraduate Education	2s.
Accident Management	6s.	Memorandum for the Guidance of Trainers	1s.
Nutrition in General Practice	7s. 6d.	Guidance for Students visiting a General Practitioner	1s.
Arthritis in General Practice	5s.	Group Practice, Ancillary Help and Government Controls	7s. 6d.
Migraine in General Practice	5s.		

---

# *The Journal of the Royal College of Physicians of London*

This Journal provides a commentary on all matters relevant to the art and science of the physicians. It is concerned with the evaluation of all the growing points of medicine and is not confined to the mere recording of experimental protocol. It should be required reading, complementary to the specialised journals, for all who are members of a learned profession. Much of the material published is derived from the college conferences in which recent advances are woven into the fabric of medical practice by experts who present their work to a general audience and have to indicate the importance of their specialty to workers in other fields, thus leading to fruitful collaboration and new ideas.

## *Contents of Volume 3 No. 2*

Rosemary Biggs	<i>"The Treatment of Haemophilia"</i>
Lewis Dexter	<i>"The Management of Pulmonary Embolism"</i>
A. S. Douglas	<i>"Prevention and Treatment of Thrombosis"</i>
P. Draper	<i>"Community-Care Units"</i>
R. M. Hardisty	<i>"Haemorrhagic Disorders due to Functional Abnormalities of Platelets"</i>
Lawson McDonald	<i>"Assessment for Closed and Open Surgery in Mitral Disease"</i>
R. M. Marquis	<i>"Mitral Disease and Pregnancy"</i>
J. R. O'Brien	<i>"Platelet Aggregation Tests and Thrombosis"</i>
Jane Somerville	<i>"Congenital Mitral Valve Disease"</i>
M. M. Wintrobe	<i>"The Therapeutic Millennium and its Price (The Lilly Lecture 1968)"</i>

---

<b>Editor</b>	A. Stuart Mason, M.D., F.R.C.P.
<b>Publication</b>	Published quarterly in October, January, April and July
<b>Subscription</b>	60s. per annum (including postage)
<b>Editorial Office</b>	Royal College of Physicians of London, 11 St. Andrew's Place, Regents Park, London, N.W.1
<b>Publishing Office</b>	Pitman Medical Publishing Company Ltd. 46 Charlotte Street, London, W.1

---

### ACCOMMODATION AT COLLEGE HEADQUARTERS

Temporary residential accommodation for members and associates and their families is provided at college headquarters. This building, overlooking Hyde Park on one side and Princes Gate on the other, is central and easily accessible.

The charges, including breakfast, are as follows:

For single rooms	£2 10s. 0d. per night
For double rooms	£4 5s. 0d. per night
For a flatlet (bed-sitting room for two, bathroom and dressing room)	£6 per night or £36 per week
For a self-contained flat (double bedroom, sitting room, hall, kitchen and bathroom)	£42 per week

Children under the age of 12 years cannot be admitted, and dogs are not allowed.

Members and associates may, subject to approval, hire the reception rooms for meetings and social functions. The charges for these are:

Long room (will seat 100)	25 guineas for each occasion
Damask room (will seat 50)	15 guineas for each occasion
Common room and terrace	15 guineas for each occasion

A service charge of 10 per cent is added to all accounts to cover gratuities to domestic staff.

Enquiries should be addressed to the **Administrative Secretary, The Royal College of General Practitioners, 14 Princes Gate, London, S.W.7.** (Tel. 01-584 6262). Whenever possible bookings should be made well in advance.



The Royal College of General Practitioners  
Published for the College by E. & S. Livingstone Limited, Teviot Place,  
Edinburgh and

Printed by The Devonshire Press Limited, Torquay