

# Are doctors immortal?

Some patients seem to think that doctors never die. Or become ill. Or have accidents.

But as a doctor you know that your chances of falling sick, or breaking a leg tomorrow are the same as everyone else's. And the effect on your life and family is much graver.

Your practice, for instance, must be kept going. So your income plunges overnight. And your life becomes stifled by financial worries: how to keep your family, meet school fees, pay the mortgage. To a sick man worry is a poisonous enemy.

That's why it's so wise to insure against sickness or early death. Wiser still to insure with the company run exclusively for doctors and dentists: the Medical Sick-ness Society.

*You* know that one day you may need this insurance. So write today. Together we'll find the policy which will work hardest for you.

Do it now.

## Medical Sickness Society

Tel: 01-636 1636 (15 lines) 01-636 4158 (24 hour answering service)

Quote ref No. 008 To: Medical Sickness Annuity and Life Assurance Society Ltd.  
P.O. Box No. 449, 7-10 Chandos Street, Cavendish Square, London, W1

**Transform the Parkinsonian  
patient with**

**'KEMADRIN'**

**in Paralysis Agitans and  
Drug-induced Parkinsonism**

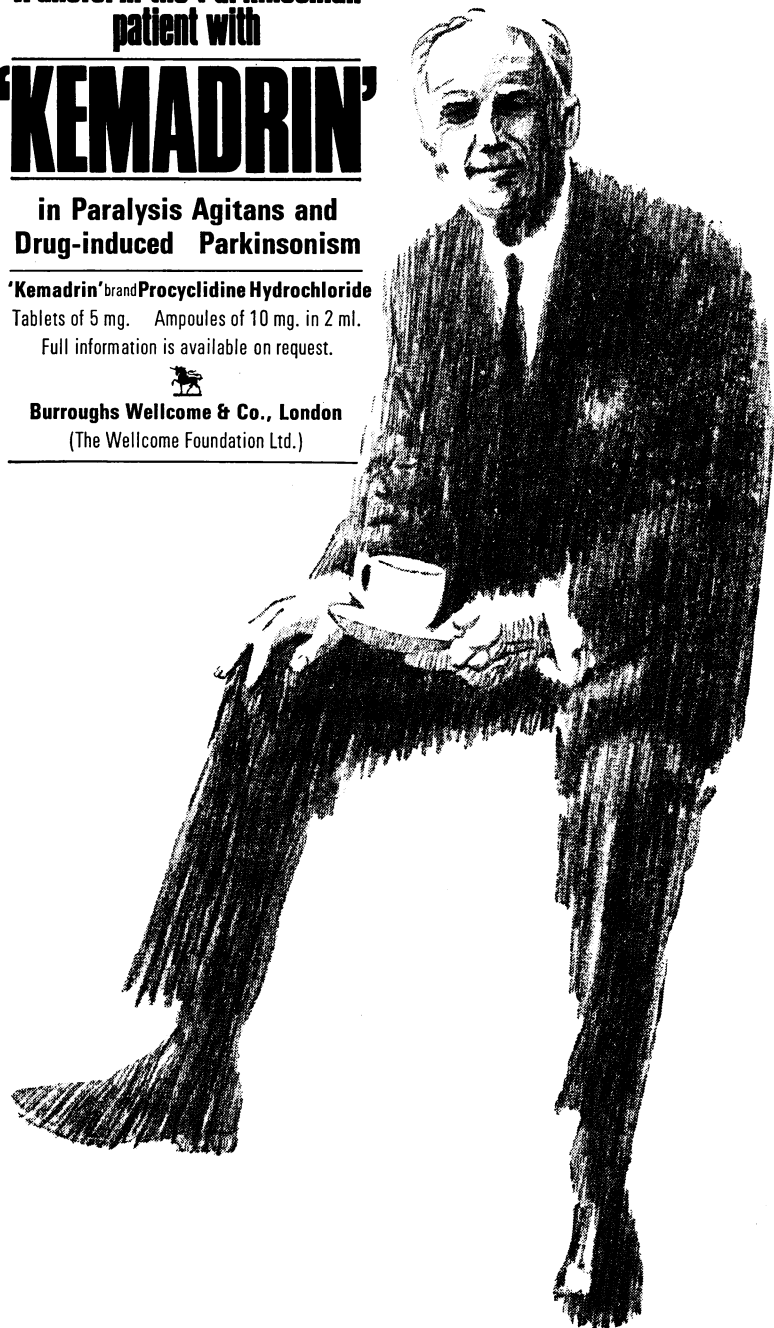
**'Kemadrin' brand Procyclidine Hydrochloride**

Tablets of 5 mg. Ampoules of 10 mg. in 2 ml.

Full information is available on request.



**Burroughs Wellcome & Co., London**  
(The Wellcome Foundation Ltd.)



# Unit Linked Investment

To many who have a varied portfolio of conventional Endowment Assurance, there is little doubt that an equity linked contract can have much appeal.

Why not write for details?—We will ensure the selection of the scheme most suitable for your requirements.

## MEDICAL INSURANCE AGENCY LTD.

**B.M.A. House, Tavistock Square, London, W.C.1.**

General Manager: N. V. P. Seal.

Telephone: 01-387 6031/9.

**Branches throughout the country.**

## *The Journal of the Royal College of Physicians of London*

This Journal is concerned with the integration of scientific disciplines in the practice of medicine and, by providing a wide ranging commentary on the growing points of medicine, is an essential complement to the specialised journals.

### *Contents of Volume 3 No. 3*

J. O. F. Davies	<i>"The Changing Pattern of Medical Care"</i>
Katharine M. Dormandy	<i>"Von Willebrand's Disease: Pathogenesis and Management"</i>
J. R. Elliott	<i>"Integrating the Hospital and the Community"</i>
G. Hamilton Fairley	<i>"The Management of the Complications of Leukaemia"</i>
D. A. G. Galton	<i>"Principles of Therapy in Leukaemia"</i>
R. H. Girdwood	<i>"Nutritional Factors and Anaemia"</i>
F. G. J. Hayhoe	<i>"Value of Newer Therapeutic Agents in Leukaemia"</i>
S. M. Lewis	<i>"Aplastic Anaemia: Problems of Diagnosis and Treatment"</i>
C. E. Newman	<i>"The First Library of the Royal College of Physicians. The FitzPatrick Lecture"</i>
W. R. Pitney	<i>"Problems in the Diagnosis of Leukaemia"</i>
D. J. Weatherall	<i>"Hypochromic Anaemias not due to Iron Deficiency: Thalassaemia and Sideroblastic Anaemia"</i>
Elsie M. Widdowson	<i>"Preparations Used for the Artificial Feeding of Infants"</i>

**Editor**  
**Publication**  
**Subscription**  
**All enquiries to**  
**Editorial Office**

**Publishing Office**

A. Stuart Mason, M.D., F.R.C.P.  
Published quarterly in October, January, April and July  
60s. per annum (including postage)  
Royal College of Physicians of London,  
11 St. Andrew's Place,  
Regents Park, London, N.W.1  
Pitman Medical Publishing Company Ltd.  
46 Charlotte Street, London, W.1



## A UNIQUE ORAL GEL WITH STRIKING ANALGESIC AND ANTISEPTIC PROPERTIES

Bonjela has been shown in formal American trials to bring rapid relief from pain in 90% of all cases of oral ulceration, herpes labialis, gingivitis and denture sores. By rapid relief is meant marked alleviation of pain within 2-3 minutes.

Bonjela also promotes healing whenever the aetiology is partly or wholly bacterial. Some ulceration originates from endocrinal, viral or fungal causes which may require other forms of treatment.

Even in these cases where a bacterial element is superimposed on the

original infection Bonjela will reduce the severity of the infection and rapid relief from pain will be obtained.

**FORMULA:** Choline Salicylate 8.7%, Cetalkonium Chloride 0.01%, Alc. (95%) 39.0%, Menthol 0.057%, Glycer 4.6%.

**INDICATIONS:** Herpes labialis, gingivitis, oral ulcerations, cheilosis denture sores, infant teething disorders.

**PRESENTATION:** Bonjela is available in 10 g. tubes at a basic N.H.S. cost of 2/8½d. per tube.

LLOYDS' PHARMACEUTICALS LTD.  
103 Mount Street, London, W.1.  
*An associate of Lloyd-Hamol Ltd.*

Literature and samples are available on request



in depression

## grounds for optimism

For the depressed patient, optimism about the chances of recovery begins with the first visit to the physician who shows an interest in his case. This optimism can be built upon with the aid of modern antidepressant drugs, enabling the physician to help his patient to a more speedy recovery.

In this respect, 'Concordin' often brings an initial elevation of mood within a week—the patient soon has grounds for greater optimism.

'Concordin' is available as tablets in two strengths: 'Concordin'-10 as white film-coated tablets (marked 'C10') containing 10 mg protriptyline hydrochloride, in bottles of 100 and 500;

'Concordin'-5 as salmon-red, film-coated tablets (marked 'C5') containing 5 mg protriptyline hydrochloride, in bottles of 100 and 500.

'Concordin' offers many depressed patients these advantages:

- speed of action—improvement often starts within a week
  - virtual freedom from sedative activity—the patient on 'Concordin' can continue with normal activities since drowsiness is rare
  - no dietary restrictions—
- 'Concordin' is not a MAOI and so the patient can enjoy full freedom in choice of food

Detailed information is available to physicians on request.

® denotes registered trademark.

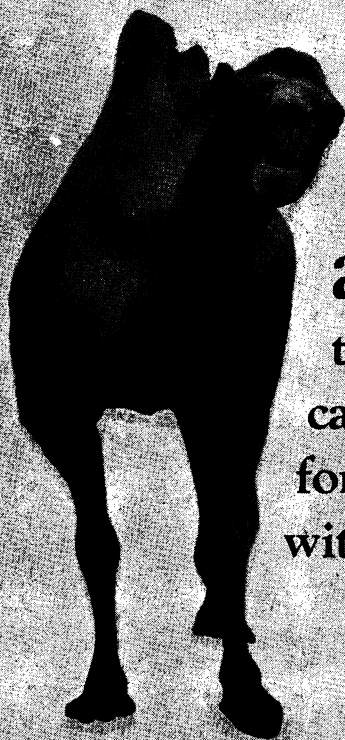
# Concordin

Protriptyline hydrochloride



Merck Sharp & Dohme Limited  
Hoddesdon, Hertfordshire  
Telephone, Hoddesdon 67123

9-1382



it's  
wrong  
to  
assume  
the camel  
can travel  
for weeks  
without water

All those stories about camels storing water in their hump. Wrong! Because of the peculiar conformation of their stomachs, camels can travel without the need for water for much greater distances than most animals. This is because, rather than storing a lot of water for a long journey, the camel loses the water in its body a lot less quickly than any other animal.

Their endurance in this respect, however, is very often greatly abused. It is also wrong to assume, as many people do, that a negative test for protein in urine, by standard methods, excludes the possibility of a significant haematuria. LABSTIX reagent strips avoid the need for assumption, they provide information on the presence or absence of urinary glucose, protein, ketones and blood, together with an indication of urinary pH. This test has now become established as a routine in many wards, clinics and surgeries throughout the United Kingdom.

Facts are more reliable than assumptions.

Let LABSTIX provide the information in 30 seconds.

**LABSTIX\***

**for earlier diagnosis and effective follow-up**

*Further information is available on request.*



**Ames Company**

Division of Miles Laboratories Ltd  
Stoke Court, Stoke Poges, Slough, Bucks.



*\*trade mark*



# The logical successor to ACTH

## **SYNACTHEN<sup>®</sup> DEPOT**

tetracosactrin/zinc complex

**A product of CIBA research**

Synthetic polypeptide composed of the first 24 of the 39 amino-acids contained in natural ACTH

### **Constant potency**

Dosage is by weight and no biological assay is necessary

### **Special long-acting formulation**

permits less frequent administration than with gel-forms and variable viscosity is never a problem, at any temperature

### **Reduced allergenicity**

Chemical synthesis has eliminated contamination by foreign protein and removed the antigenic portion of porcine ACTH. The risk of sensitivity reactions to this preparation has thereby been virtually eliminated

C I B A

#### **Basic NHS prices**

Ampoules of 1ml containing 1mg Synacthen in a zinc phosphate complex 10 amps: 160s0d. Also multi-dose vials 2mg/2ml 29s0d each. Synacthen ampoules (short-acting) containing 0.25mg lyophilised Synacthen are available for diagnostic use. 6 amps: 70s 0d.

Detailed information on request.

CIBA Laboratories Limited, Horsham, Sussex.

SD/1

# Normax takes the **STRAIN** out of constipation

## **..and promotes comfortable evacuation**

Normax is indicated for the treatment of constipation particularly in conditions where it is important that your patients should not strain to stool—coronary thrombosis, cardiac failure, haemorrhoids, episiotomy. Normax has also been used in the treatment of constipation of pregnancy, and in preparation of patients for surgical and radiological procedures. Normax is also indicated for geriatric patients and for patients with spastic colon and diverticulitis.

**Composition** Each brown capsule contains dioctylsodium sulphosuccinate 60 mg., a faecal softener, and 1-8 dihydroxyanthraquinone 50 mg., a mild peristaltic stimulant.

**Side Effects** No adverse side effects have been reported with Normax. 1-8 dihydroxyanthraquinone may however give the urine an orange tint.

**Dosage** One to two capsules to be taken at night, or as prescribed.

**Presentation & Basic N.H.S. Price** Normax capsules are available in bottles of 30 and 250 at a basic N.H.S. price of 4/10 and 26/10 respectively.

For further information apply:  
Horlicks Pharmaceuticals Limited  
Winkfield, Windsor, Berks.







in osteoarthritis

# INDOCID

Indomethacin

®

**the sooner the better for optimal results**

Through its anti-arthritis activity, 'Indocid' offers many patients:

- rapid relief of pain
- increase in range of movement, enabling patients progressively to return to normal activities
- a response when other anti-arthritis agents are inadequate or not tolerated

'Indocid' is suitable for long-term therapy where necessary

Supplied as 25 mg capsules, 100 mg suppositories, and a suspension (25 mg/5ml).

*Detailed information is available to physicians on request.*

® denotes registered trademark.



Merck Sharp & Dohme Limited, Hoddesdon  
Hertfordshire Telephone, Hoddesdon 67123

9-1340

**In Bronchitis**

---

# SEPTRIN

---

Trade Mark

**Abolishes pathogens, renders  
sputum mucoid and dramatically  
decreases sputum volume\***

---

New mode of bactericidal action. An advance on antibiotic therapy. Reduces or eliminates problems of bacterial resistance, disturbance of gut flora and other troublesome side-effects. Exceptionally rapid clinical effect in respiratory tract, urinary tract and other infections caused by a wide range of sensitive organisms – Gram-positive and Gram-negative.

---

**'Septrin' tablets**

Each contain trimethoprim 80 mg,  
sulphamethoxazole 400 mg.

**'Septrin' Paediatric  
tablets**

Each contain trimethoprim 20 mg,  
sulphamethoxazole 100 mg.



\* Proceedings of the V International Congress of Chemotherapy, Supplement, (A 1-5a/3) 107.

Further information is available on request.

**Burroughs Wellcome & Co.** (The Wellcome Foundation Ltd.) **London**

vitamin D through the skin?

Dr Mott occasionally visits patients unable to come to the Poste. The day before I arrived an elderly man had collapsed with circulatory failure. His legs and chest were full of fluid. He was an itinerant without a home, and when news of his trouble was heard in the town, a house in the process of completion, full of rubble, was put at his disposal by the builder. Two planks and some sacking made a bed. The neighbours nursed him and Dr Mott and I gave diuretic mercurial injections. When I left he was almost fit to undertake the journey to hospital at Salvador. I was deeply impressed by the man's courage and cheerfulness and by the kindness and helpfulness of the neighbours, who gladly gave what little they had.

My stay was far too short. I was just becoming of some use when I had to return to Salvador, that lively, noisy, bustling city, where the primitive lives happily with the contemporary in building, transport, food, religion and personnel. My return was not altogether uneventful. On my last day a boy of two years with the early signs of Chagas' disease was brought to the Poste. Under the microscope I was able to see the active vibrio in a blood specimen, and confirm the diagnosis. So I took the boy to hospital. Reveille that morning was at 04.30 hours. We left in the jeep at 05.00. I nursed the boy in one arm, holding firmly to the rail with the other hand to keep us from bouncing out of the jeep, while Mr Sunday drove. We left the jeep at Sao Roque, caught the 07.00 boat and reached Salvador at 09.00. A taxi took us to the tropical diseases unit of the hospital, where I met some of the staff and was shown round the unit.

For some time to come when the T.V. breaks down or a train is late or there is no egg for breakfast, or faced by any other modern tragedy, I shall recall the patience of these people of Sao Felipe who, in sickness or more rarely in health, are ready to smile in conditions we should find unendurable, and I shall remember with gratitude the dedicated service given by Ken Mott and his helpers. Were I a few years younger . . . but, alas, I am not.

#### ACCOMMODATION AT COLLEGE HEADQUARTERS

Temporary residential accommodation for members and associates and their families is provided at college headquarters. This building, overlooking Hyde Park on one side and Princes Gardens on the other, is central and easily accessible.

The charges, including breakfast, are as follows:

For single rooms	£2 10s. 0d. per night
For double rooms	£4 5s. 0d. per night
For a flatlet (bed-sitting room for two, bathroom and dressing room)	£6 per night or £36 per week
For a self-contained flat (double bedroom, sitting room, hall, kitchen and bathroom)	£42 per week

Children under the age of 12 years cannot be admitted, and dogs are not allowed.

Members and associates may, subject to approval, hire the reception rooms for meetings and social functions. The charges for these are:

Long room (will seat 100)	25 guineas for each occasion
Damask room (will seat 50)	15 guineas for each occasion
Common room and terrace	15 guineas for each occasion

A service charge of 10 per cent is added to all accounts to cover gratuities to domestic staff.

For the convenience of members, four car ports, outside 14 Princes Gate, have been rented by the College and may be hired, at a cost of 10s. 6d. per 24 hours.

Enquiries should be addressed to the Administrative Secretary, The Royal College of General Practitioners, 14 Princes Gate, London, S.W.7. (Tel. 01-584 6262). Whenever possible bookings should be made well in advance.

# THE ROYAL COLLEGE OF GENERAL PRACTITIONERS

## Services provided for members

1. **The Geoffrey Evans Library** provides lists of references and a photocopying service.  
*Librarian:* Miss M. Hammond, 14 Princes Gate, London, S.W.7.
2. **Medical Recording Service**  
*Honorary directors:* Drs John and Valerie Graves, *O.B.E.*, Kitts Croft, Writtle, Chelmsford, Essex.
3. **Postgraduate Information Diary**  
*Information officer:* Education Committee of Council, 14 Princes Gate, London, S.W.7.
4. **Practice organization.** Library of architects' plans, photographs, descriptions of practice premises and advice on equipment.  
*Secretary:* Practice Organization Committee, Royal College of General Practitioners, 14 Princes Gate, London, S.W.7.
5. **Awards.** A number of Travelling Fellowships and prizes are in the gift of the College. Information is published periodically in the *College Journal*.
6. **Research Register, and Register of Research Projects**  
*Honorary registrar:* Dr R. M. Griffiths, 4 The Dell, Woodford Wells, Essex.
7. **General-practice Research Unit.** Planning and statistical advice and processing for mechanical analysis of survey results or other records. Advice in planning, in contacting like-minded practitioners, advice in method, on any aspect of research work.  
*Honorary director:* Dr D. L. Crombie, 8 Albert Road, Harborne, Birmingham 17.
8. **Epidemic Observation Unit.** Collates observations of practitioners which might otherwise be lost.  
*Honorary director:* Dr G. I. Watson, *O.B.E.*, Corran, Peaslake, nr. Guildford, Surrey.
9. **Grants.** Grants in aid of research are made from the funds of the Research Foundation. Advice as to other sources of finance for research and help with preparation of applications.  
*Honorary secretary/treasurer:* Dr E. V. Kuenssberg, 15 Warriston Crescent, Edinburgh 3 (or to 14 Princes Gate, London, S.W.7).
10. **College Club.** All members of the College are *ipso facto* members of the club at 14 Princes Gate, S.W.7, where bed and breakfast may be obtained at reasonable rates, and where members may meet friends. Members may, subject to approval, hire rooms for functions and meetings.  
*Administrative secretary:* Mrs E. Phillips, Royal College of General Practitioner, 14 Princes Gate, London, S.W.7.
11. **Journal.** Published monthly and circulated to all members and associates. Subscription to non-members, £4 4s. 0d. per annum. (Single copies 10s. 6d.)  
*Honorary editor:* Dr R. M. S. McConaghey, *O.B.E.* } Prospect House  
*Editorial manager:* Miss I. Scawn } Newcomen Road, Dartmouth

## Publications

Copies of the following publications may be obtained from E. & S. Livingstone, Limited, Teviot Place, Edinburgh.

Reports from General Practice		Mental Health and the Family Doctor	
No. 1. Vocational Training	5s.	Rehabilitation	5s.
No. 3. Additional Payments for Wide Experience and Notable Service in General Practice	1s.	The Aetiology of Congenital Anomalies	7s. 6d.
No. 4. General Practice in the New Towns of Britain	6s.	The Early Stages of Chronic Bronchitis	10s. 6d.
No. 5. Evidence of the College of General Practitioners to the Royal Commission on Medical Education	6s. 6d.	Preventive Medicine in General Practice	10s. 6d.
No. 7. Education in Psychology and Psychiatry	7s. 6d.	The Quality of Medical Care	5s.
No. 8. General Practice in South-west England	7s. 6d.	Health in a Changing Environment	7s. 6d.
No. 9. Obstetrics in General Practice	7s. 6d.	Clinical Problems of Practice	8s. 6d.
No. 10. The Practice Nurse	7s. 6d.	Anaemia in General Practice	6s.
		The Art of Listening	7s. 6d.
		Early Diagnosis	8s. 6d.
		The Age of Discretion	7s. 6d.
		The early detection of imported and endemic disease	7s. 6d.
		Society and its general practitioners	10s. 6d.

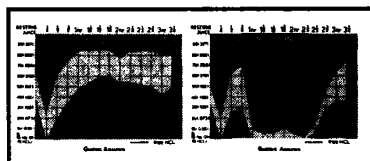
### Other Publications

Symposia		Training for General Practice (2nd Edition)	
Hazards of Middle Age	5s.	Epidemic Winter Vomiting	1s.
Problems of Sex	6s.	On Undergraduate Education	2s.
The Art and Science	7s. 6d.	Memorandum for the Guidance of Trainers	1s.
Accident Management	6s.	Guidance for Students visiting a General Practitioner	1s.
Nutrition in General Practice	7s. 6d.	Group Practice, Ancillary Help and Government Controls	7s. 6d.
Arthritis in General Practice	5s.		
Migraine in General Practice	5s.		

# Prevent breakthrough hyperacidity Rx Nulacin

When your patient presents with symptoms of gastric hyperacidity, Nulacin therapy provides continuous neutralisation—essential for the prevention and healing of peptic ulcer since most peptic ulcers arise and recur in the presence of free acid.

The Nulacin tablet is prepared from whole milk combined with dextrins and maltose, together with magnesium trisilicate 230 mg., magnesium oxide 130 mg., calcium carbonate 130 mg., magnesium carbonate 30 mg., Ol. Menth. Pip. q.s.



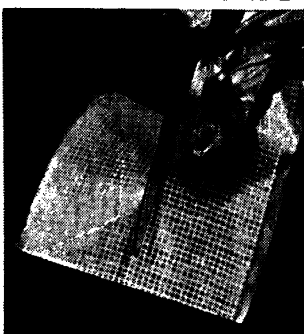
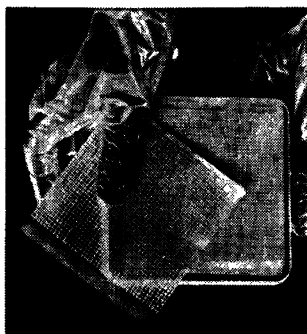
Full information is available on request to:  
Horlicks Pharmaceuticals Limited, Winkfield,  
Windsor, Berkshire



The Royal College of General Practitioners  
Published for the College by E. & S. Livingstone Limited, Teviot Place,  
Edinburgh and  
Printed by The Devonshire Press Limited, Torquay

In the treatment of ulcers and burns,  
or in any skin condition open to infection . . .

## It's as easy as ABC to use doubly-interleaved **intertulle fucidin**



Each square slides easily from the pack; dressings no longer stick together. There is no waste. A tulle square is cut to the size you need, the protective interleaving is peeled away and the dressing applied to the lesion. The remaining protective sheet is removed and dressing is completed as required. Intertulle Fucidin has the bactericidal power of Fucidin Ointment against staphylococci and streptococci and remarkable freedom from side-effects.

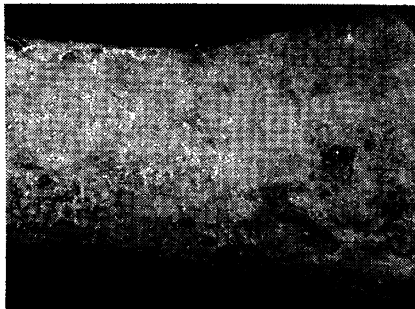
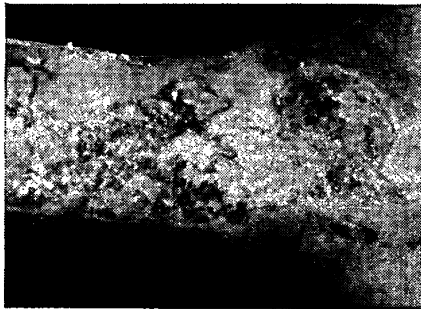
Intertulle Fucidin is presented in special white plastic packs containing 10, 4"x4" sterile gauze squares, doubly-interleaved for easy use and impregnated with Fucidin Ointment (2% Sodium Fusidate B.P. in a neutral ointment base) - the logical topical antibiotic.

Now available on E.C.10

**a case in point:** *Left:* Varicose ulcer on leg of 74 year-old man.

*Right:* After 5 weeks' treatment with Intertulle Fucidin.

*Photographs from Leo Laboratories' Library of British Dermatological Case Histories, 1969.*



Write for full information

LEO LABORATORIES LIMITED · HAYES · MIDDLESEX · Telephone 573 6224