

Are doctors immortal?

Some patients seem to think that doctors never die. Or become ill. Or have accidents.

But as a doctor you know that your chances of falling sick, or breaking a leg tomorrow are the same as everyone else's. And the effect on your life and family is much graver.

Your practice, for instance, must be kept going. So your income plunges overnight. And your life becomes stifled by financial worries: how to keep your family, meet school fees, pay the mortgage. To a sick man worry is a poisonous enemy.

That's why it's so wise to insure against sickness or early death. Wiser still to insure with the company run exclusively for doctors and dentists: the Medical Sickness Society.

You know that one day you may need this insurance. So write today. Together we'll find the policy which will work hardest for you.

Do it now.

Medical Sickness Society

Tel: 01-636 1696 (15 lines) 01-636 4158 (24 hour answering service)

Quote ref No. 008 To: Medical Sickness Annuity and Life Assurance Society Ltd.
P.O. Box No. 449, 7-10 Chandos Street, Cavendish Square, London, W1

ROTER

IN PEPTIC DISORDERS

does more than just relieve pain



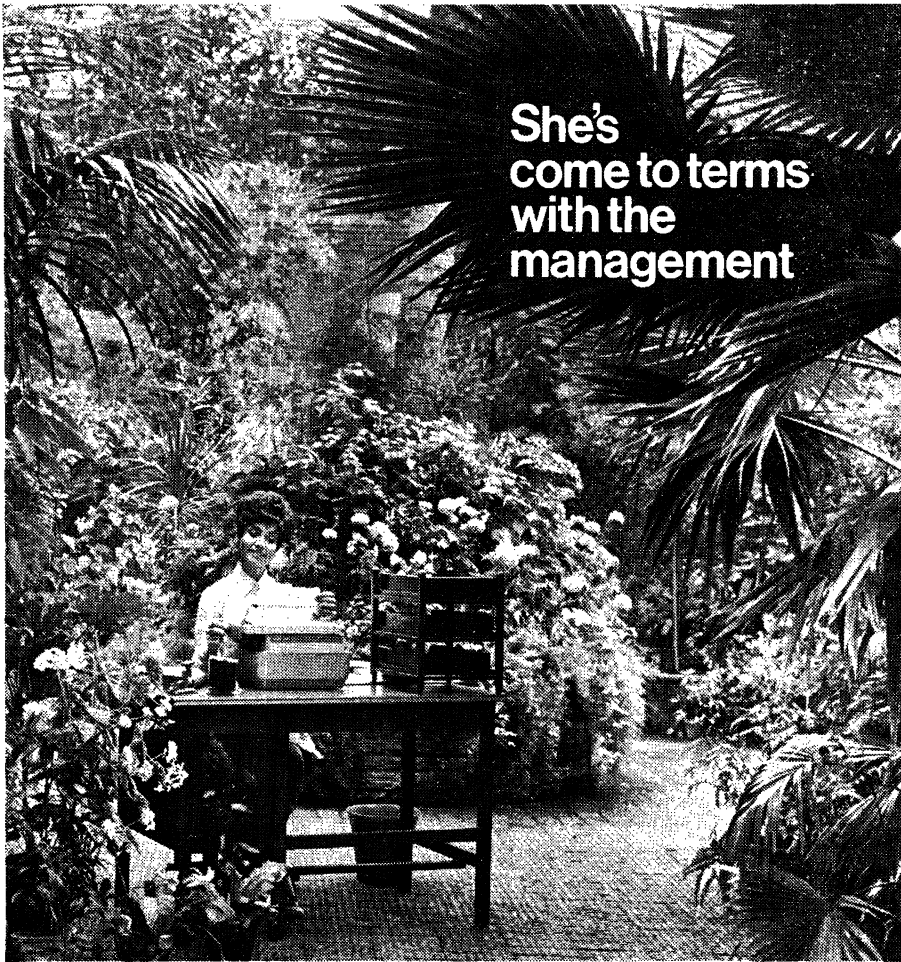
Each tablet contains: Bismuth
Subnitrate Roter (350 mg.),
Magnesium Carbonate (400 mg.),
Sodium Bicarbonate (200 mg.) and
Cortex Rhanni Frangulae (25 mg.).

Packings: Tins of 40 and 120, also
dispensing sizes, 360 and 720
(P.T. exempt).

ROTER tablets quickly overcome the pain and discomfort of minor gastric disturbances, but their true value is most evident in their control and frequent healing of peptic ulcer in both the early and the advanced or chronic stages. With Roter therapy, hospitalisation or surgery is mostly avoided; the patient remains ambulant and uncommitted to a restricted or prescribed diet; and recurring medical attention is usually obviated. Roter is worth remembering for your "gastric" patients.

Literature will be supplied on request from:-

F.A.I.R. LABORATORIES LTD., TWICKENHAM, MIDDLESEX.



She's
come to terms
with the
management

The management of her hay fever. Now, with the help of 'Banistyl' she is back to a full working day, her productivity protected from the restrictive practices of allergic symptoms and drug-induced drowsiness. 'Banistyl' controls hay fever and allergic rhinitis with minimum soporific effect and can give up to eight hours' active relief.

'Banistyl'* is presented as tablets containing the equivalent of 20 mg. dimethothiazine base (as mesylate), and elixir containing 10 mg. dimethothiazine base (as mesylate) in each 5 ml. spoonful. **trade mark*

Full information on request



An M&B brand Medical Product

Banistyl
for hay fever

MAY & BAKER LTD
Dagenham . Essex . RM10 7XS

The Journal of the Royal College of Physicians of London

This Journal is concerned with the integration of scientific disciplines in the practice of medicine and, by providing a wide ranging commentary on the growing points of medicine, is an essential complement to the specialised journals.

Contents of Volume 3 No. 4

A. Brook	"The Effect of Responsibility on Health."
J. W. B. Douglas	"Effects of Early Environment on Later Development."
Wing Cdr. P. Howard	"Man in Weightlessness."
M. S. Knapp	"Nocturia and Reversed Circadian Rhythms."
Surgeon Rear Admiral S. Miles	"Man Under the Water."
J. N. Mills	"Man Underground."
L. G. C. E. Pugh	"Man at High Altitude."
A. H. T. Robb-Smith	"A History of the College's Nomenclature of Diseases: Its Preparation."
P. J. Taylor	"The Problems of Shift Work."

Editor	A. Stuart Mason, M.D., F.R.C.P.
Publication	Published quarterly in October, January, April and July.
Subscription	60/- per annum (including postage).
All Enquiries to Editorial Office	Royal College of Physicians of London, 11, St. Andrew's Place, Regent's Park, London, N.W.1.
Publishing Office	Pitman Medical Publishing Co. Ltd., 46, Charlotte Street, London, W.1.

Car Hire Purchase for Doctors and Dentists

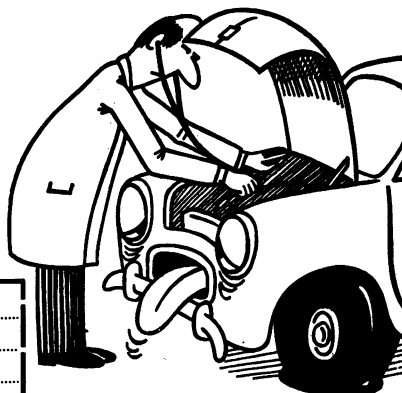
Get details of the special hire-purchase terms offered to the profession by
The Medical Sickness Finance Corporation

- ★ Minimum deposit
- ★ Maximum period of repayment
- ★ Payments waived on death

Send the coupon below to us at
**7-10 Chandos Street
Cavendish Square, London W1
Telephone 01-636 1686**

A wholly owned subsidiary of
Medical Sickness Annuity and Life
Assurance Society Ltd.

Name.....	
Address.....	
Occupation.....	GP





Filing Equipment

Amerson specialises in filing equipment for N.H.S. Records and can offer a wide range of cabinets and units for doctors' surgeries. Illustrated is the Model 6457 Cabinet designed for maximum capacity on minimum floor space.

Surgery Furniture

Let Amerson furnish your surgery throughout—desks, chairs, typewriters—in fact anything you need.

Leasing

Advantageous leasing terms are available to allow for a brighter and more efficient surgery without heavy capital expenditure.

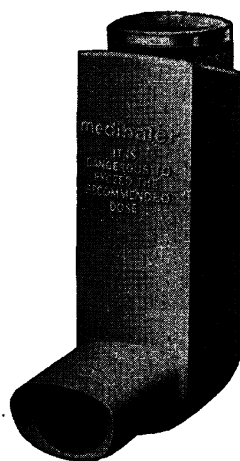
Send for this interesting catalogue.

**Amerson Limited,
Birdwell Works, Long Ashton, Bristol. BS18 9LB**

Telephone : Long Ashton 0275-80 2108/3298

introducing

medihaler duo



**for prolonged action . . .
rapid relief . . .
insignificant cardiovascular effect . . .**

With *Medihaler-duo*, Riker makes a further notable contribution to bronchodilator therapy. *Medihaler-duo* enables the physician to make a more positive approach to reversal of airway obstruction in bronchial asthma and chronic bronchitis.

Medihaler-duo takes advantage of the finding that the bronchodilator effect of isoprenaline can be significantly enhanced by the action of phenylephrine. As a result, it is possible to obtain a greater response to treatment than would be experienced from comparable doses of isoprenaline administered alone. Moreover, this enhanced bronchodilator effect is achieved without significant change in pulse rate or blood pressure at recommended dosage.

These results have been confirmed in clinical trials 1, 2, 3, 4, 5, 6, 7. With *Medihaler-duo*, relief is immediate in onset and often prolonged for three or more hours. Effect on the cardiovascular system has been found to be insignificant even in patients with uncomplicated hypertension.

. . . in bronchial asthma and chronic bronchitis

Composition *Medihaler-duo* contains a suspension of isoprenaline hydrochloride 8 mg./ml., phenylephrine bitartrate 12 mg./ml. and delivers to the patient a measured dose containing 0.16 mg. isoprenaline hydrochloride and 0.24 mg. phenylephrine bitartrate.

Contra-indications There are no absolute contra-indications, but *Medihaler-duo* should be used with caution in the presence of cardiac disease, hypertension or hyperthyroidism.

Side-effects Overdosage may cause dry mouth, palpitations, or nervousness.

Dosage Each puff from *Medihaler-duo* delivers a measured dose. One to three puffs should be sufficient to provide relief in most cases. It should not be necessary for the patient to take further treatment for at least thirty minutes, or more than eight treatments a day.

Children *Medihaler-duo* should be administered to children only under the supervision of a responsible adult.

Basic NHS price Standard pack (complete 400-dose unit) 17/- plus Purchase Tax.

1. *Curr. therap. Res.* (1962) 4:601. 2. *J. Amer. Geriat. Soc.* (1968) 16:786. 3. *J. Allergy* (1968) 41:285.
4. *Thorax* (1968) 23:590. 5. *Amer. J. med. Sci.* (1965) 249:309. 6. *Marseille Medical* (1967) 104:585.
7. *Int. Arch. Allergy* (1963) 24:17.

Full information is available on request. *Medihaler-duo* is a registered trade mark.

RIKER LABORATORIES · LOUGHBOROUGH · LEICESTERSHIRE



Normax takes the **STRAIN** out of constipation

.. and promotes comfortable evacuation

Normax is indicated for the treatment of constipation particularly in conditions where it is important that your patients should not strain to stool—coronary thrombosis, cardiac failure, haemorrhoids, episiotomy. Normax has also been used in the treatment of constipation of pregnancy, and in preparation of patients for surgical and radiological procedures. Normax is also indicated for geriatric patients and for patients with spastic colon and diverticulitis.

Composition Each brown capsule contains dioctylsodium sulphosuccinate 60 mg., a faecal softener, and 1-8 dihydroxyanthraquinone 50 mg., a mild peristaltic stimulant.

Side Effects No adverse side effects have been reported with Normax. 1-8 dihydroxyanthraquinone may however give the urine an orange tint.

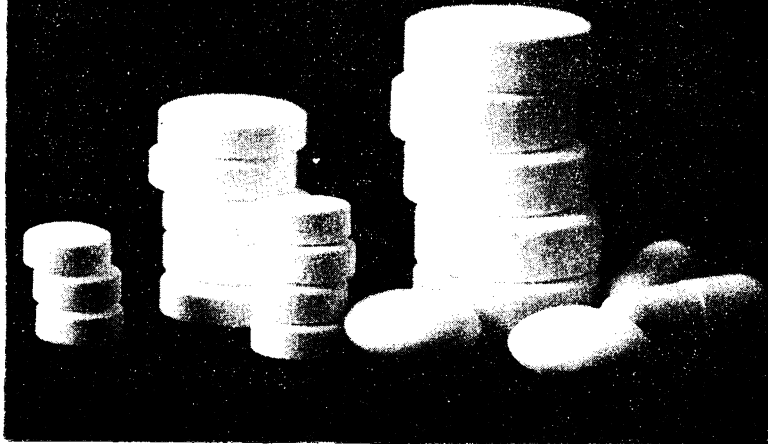
Dosage One to two capsules to be taken at night, or as prescribed.

Presentation & Basic N.H.S. Price Normax capsules are available in bottles of 30 and 250 at a basic N.H.S. price of 4/10 and 26/10 respectively.

For further information apply:
Horlicks Pharmaceuticals Limited
Winkfield, Windsor, Berks.



Diabetics who need these
need CLINISTIX too!



When you prescribe diet and oral hypoglycaemic agents, add 'CLINISTIX strips' to the prescription.

Non-insulin dependent diabetics need to check regularly that their diabetes is controlled.

Tests for glycosuria with CLINISTIX reagent strips can be made by practically all patients and take only 10 seconds to perform.

Whenever oral hypoglycaemic agents are prescribed remember 'control' and add CLINISTIX strips to the prescription.

And of course, insulin-dependent diabetics should test regularly with CLINITEST* reagent tablets.

CLINISTIX reagent strips and CLINITEST reagent tablets are prescribable on NHS form EC10. Further information on testing patterns available on request.

* trade mark

 **Ames Company** Division of Miles Laboratories Limited, Stoke Court, Stoke Poges, Slough, Bucks 

in depression

grounds for optimism

For the depressed patient, optimism about the chances of recovery begins with the first visit to the physician who shows an interest in his case. This optimism can be built upon with the aid of modern antidepressant drugs, enabling the physician to help his patient to a more speedy recovery.

In this respect, 'Concordin' often brings an initial elevation of mood within a week—the patient soon has grounds for greater optimism.

'Concordin' is available as tablets in two strengths: 'Concordin'-10 as white film-coated tablets (marked 'C10') containing 10 mg protriptyline hydrochloride, in bottles of 100 and 500;

'Concordin'-5 as salmon-red, film-coated tablets (marked 'C5') containing 5 mg protriptyline hydrochloride, in bottles of 100 and 500.

'Concordin' offers many depressed patients these advantages:

- speed of action—
improvement often starts within a week
- virtual freedom from sedative activity—
the patient on 'Concordin' can continue with normal activities since drowsiness is rare
- no dietary restrictions—

'Concordin' is not a MAOI and so the patient can enjoy full freedom in choice of food

Detailed information is available to physicians on request.

® denotes registered trademark.

Concordin

Protriptyline hydrochloride

®



Merck Sharp & Dohme Limited
Hoddesdon, Hertfordshire
Telephone, Hoddesdon 67123

9-1382



In just five days, 87 per cent of 251 patients with painful muscular conditions recovered or improved with *Norgesic*¹. Six days was the average treatment time in another trial, on 478 patients, when nearly nine out of every ten gained uniformly good or fair relief of pain². *Norgesic* gives the patient a better chance of rapid and reliable relief from pain – and an early return to normal work. *Norgesic* contains two agents acting in different but complementary ways. Orphenadrine citrate releases muscles from painful and incapacitating stiffness. Paracetamol relieves the pain of local tissue damage. By relieving both pain and muscle spasm *Norgesic* quickly restores the pain-free movement that plays a major part in speeding recovery, overcomes the limitations of simple analgesics, and spares the patient wasted days of immobility and needless pain.

Each tablet contains Orphenadrine Citrate B.P. 35 mg. and Paracetamol B.P. 450 mg. Dosage is two tablets three times daily. **Side effects:** within the recommended dosage, undesirable side-effects are uncommon. Dry mouth, nausea, blurring of vision, dizziness, restlessness or drowsiness may however occur in some patients susceptible to the parasympatholytic action of orphenadrine. These symptoms disappear rapidly following reduction of dosage or withdrawal of treatment. **Contra-indications** to *Norgesic* result from the parasympatho-

lytic action of orphenadrine. *Norgesic* should not be given to patients with glaucoma urinary retention (e.g. in prostatic hypertrophy or bladder neck obstruction) or myasthenia gravis. It should be used with caution in patients with tachycardia. Basic NHS prices: 100 tablets 14/4; 500 tablets 70/-. *Norgesic* is a registered trade mark. Additional information is available on request from Riker Laboratories, Loughborough, Leicestershire
1. *Practitioner* (1966) 191:660.
2. *Brit. J. Clin. Pract.* (1967) 21:37.



**Five days of
NORGESIC
could get him
back to work**

THE MOST FULLY INVESTIGATED ANALGESIC EVER INTRODUCED

FORTRAL

(brand of pentazocine)

by

The Bayer Products Company

Another outstanding product made available by the
World's Leading Producers of Analgesics

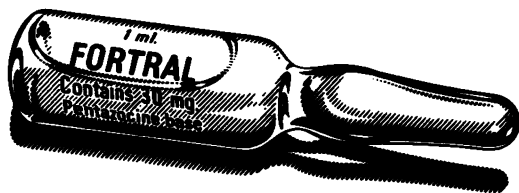
Tested on 20,000 patients

Backed by over 120 published papers

Cleared by WHO from narcotics control

Exempt from DDA control

Acclaimed in hospital use all over the world

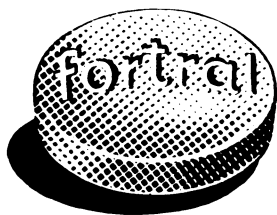


**the only non-DDA
injection
as effective as
morphine**

Fortral injection is gradually replacing the opiates in hospitals all over the country. As effective as morphine, it causes fewer side effects, does not cloud the senses and produces no analgesic tolerance on prolonged use.

FORTAL

unique among



**the only non-DDA
tablet
as effective as
intramuscular
pethidine**

Available for the first time to General Practitioners, Fortral tablets take over where the mild analgesics leave off. Here at last is a non-DDA tablet that can relieve pain regardless of its cause, severity or duration.

TRAL.

g analgesics

**“A substantial step forward...
seems to have been made
in the quest for a clinically powerful,
non-addicting analgesic.”**

**Research Symposium on the Evaluation
of Strong Analgesics, London, 1966.**

FORTRAL

unique among analgesics

Indications:

for the relief of moderate to severe pain
in all types of acute and chronic medical disorders in
general practice; following minor and major surgery;
in obstetrics and dentistry.

Dosage: Oral: Usually 2 tablets four hourly adjustable
within the range of 1-4 tablets 3-4 hourly.

Parenteral: 30-60 mg. (1-2 ml.) as required.

Side-effects: dizziness, nausea and vomiting sometimes occur.
These are more common in ambulant patients and tend to decrease
after a few doses.

Precautions:

Caution in first trimester of pregnancy;
severe renal, hepatic and respiratory impairment; patients
previously on large doses of narcotics. Ambulatory patients
should not drive, or operate machinery. Should not
generally be given to children under 12.

Contra-indications: Established respiratory depression.
Raised intracranial pressure. Severe head injury or
pathological brain conditions. Convulsive disorders.
Narcotic addicts. Patients receiving MAO inhibitors.

Basic NHS cost: 100 tablets 33/2d.,
10 x 1 ml. ampoules 20/8d., 10 x 2 ml. ampoules 39/4d.

Fortral is a registered trade mark for pentazocine.
Full information available on request from our
Medical Information Department.

Tablets: 25 mg. pentazocine



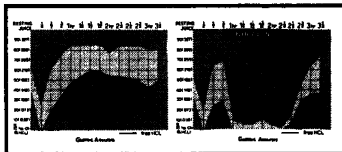
Ampoules: 30 mg. pentazocine/ml.

**The Bayer Products Company,
Surbiton-upon-Thames, Surrey**

Prevent breakthrough hyperacidity Rx Nulacin

When your patient presents with symptoms of gastric hyperacidity, Nulacin therapy provides continuous neutralisation—essential for the prevention and healing of peptic ulcer since most peptic ulcers arise and recur in the presence of free acid.

The Nulacin tablet is prepared from whole milk combined with dextrins and maltose, together with magnesium trisilicate 230 mg., magnesium oxide 130 mg., calcium carbonate 130 mg., magnesium carbonate 30 mg., Ol. Ment. Pip. q.s.



Full information is available on request to:
Horlicks Pharmaceuticals Limited, Winkfield,
Windsor, Berkshire

why



so many hypertensive patients do well on Aldomet®

Methyldopa BP

- 'Aldomet' offers smooth and even control of blood pressure when the dosage has been established.
- 'Aldomet' usually reduces lying as well as standing blood pressure.
- 'Aldomet' causes much less postural hypotension than other powerful anti-hypertensive agents.
- 'Aldomet' rarely causes exertional hypotension.
- The dosage of 'Aldomet' is simple, flexible and easily established.

Supplied as tablets containing methyldopa BP equivalent to 250 mg anhydrous methyldopa and, for emergency use, as an injection. Detailed information is available to physicians on request.

In a trial comparing three anti-hypertensive agents, it was shown that, '... in the patients who could take adequate doses methyldopa provided the best control of blood pressure, with the lowest levels of blood pressure when the patient was supine.'

Brit. med. J., 1968, 1, 129 (20 Jan)



® denotes registered trademark

Merck Sharp & Dohme Limited
Hoddesdon, Hertfordshire
Telephone, Hoddesdon 67123

CONSIDERING CANADA?

Cambridge and Bart's graduate practising in prairie city is looking for another generalist to join him next year. It is anticipated that by 1971 a third man will be needed. I have admitting privileges at large modern hospital nearby. Helpful specialist advice readily available, but the day to day care and supervision of most medical and paediatric cases in hospital remains in your hands, so adequate training in internal medicine and paediatrics is important. In addition, it is vital to be of a practical bent as all minor surgery and straightforward fracture work is done by the generalist. Fair amount of obstetrics and quite a lot of office gynaecology. Psychiatrists are thin on the ground in this province, so the ability to help disturbed patients with simple psychotherapy is important.

Rounds are held most weeks at the hospital when doctors with admitting privileges present cases of note. An interest in teaching (a medical student spends one afternoon a week at the office) and research in general practice would also be a help. Quite feasible to fly off to courses and conferences in other centres in Canada (or U.S.A.). Eight hours from U.K. by air. A six or twelve month rotating residency could be arranged at one of the city hospitals for a doctor wanting to become familiar with the Canadian medical scene prior to entering practice. Write box 100, The Journal of the Royal College of General Practitioners, 104, Gloucester Place, London W.1.

Publications

Copies of the following publications may be obtained from E. & S. Livingstone, Limited, Teviot Place, Edinburgh.

Reports from General Practice		Mental Health and the Family Doctor	5s.
No. 1. Vocational Training	5s.	Rehabilitation	5s.
No. 3. Additional Payments for Wide Experience and Notable Service in General Practice	1s.	The Aetiology of Congenital Anomalies	7s. 6d.
No. 4. General Practice in the New Towns of Britain	6s.	The Early Stages of Chronic Bronchitis	10s. 6d.
No. 5. Evidence of the College of General Practitioners to the Royal Commission on Medical Education	6s. 6d.	Preventive Medicine in General Practice	10s. 6d.
No. 7. Education in Psychology and Psychiatry	7s. 6d.	The Quality of Medical Care	5s.
No. 8. General Practice in South-west England	7s. 6d.	Health in a Changing Environment	7s. 6d.
No. 9. Obstetrics in General Practice	7s. 6d.	Clinical Problems of Practice	8s. 6d.
No. 10. The Practice Nurse	7s. 6d.	Anaemia in General Practice	6s.
		The Art of Listening	7s. 6d.
		Early Diagnosis	8s. 6d.
		The Age of Discretion	7s. 6d.
		The early detection of imported and endemic disease	7s. 6d.
		Society and its general practitioners	10s. 6d.
Symposia		Other Publications	
Hazards of Middle Age	5s.	Training for General Practice (2nd Edition)	4s. 6d.
Problems of Sex	6s.	Epidemic Winter Vomiting	1s.
The Art and Science	7s. 6d.	On Undergraduate Education	2s.
Accident Management	6s.	Memorandum for the Guidance of Trainers	1s.
Nutrition in General Practice	7s. 6d.	Guidance for Students visiting a General Practitioner	1s.
Arthritis in General Practice	5s.	Group Practice, Ancillary Help and Government Controls	7s. 6d.
Migraine in General Practice	5s.		

The logical successor to ACTH

SYNACTHEN[®] DEPOT

tetracosactrin/zinc complex

A product of CIBA research

Synthetic polypeptide composed of the first 24 of
the 39 amino-acids contained in natural ACTH

Constant potency

Dosage is by weight and no biological assay is
necessary

Special long-acting formulation

permits less frequent administration than with
gel-forms and variable viscosity is never a problem,
at any temperature

Reduced allergenicity

Chemical synthesis has eliminated contamination
by foreign protein and removed the antigenic
portion of porcine ACTH. The risk of sensitivity
reactions to this preparation has thereby been
virtually eliminated

C I B A

Basic NHS prices

Ampoules of 1ml containing 1mg Synacthen in a zinc phosphate
complex 10 amps: 160s0d. Also multi-dose vials 2mg/2ml 29s0d each.
Synacthen ampoules (short-acting) containing 0.25mg lyophilised
Synacthen are available for diagnostic use. 6 amps: 70s 0d.

Detailed information on request.

CIBA Laboratories Limited, Horsham, Sussex.

SD/1



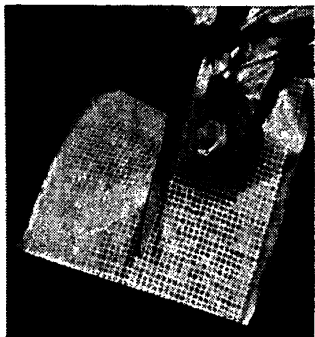
The Royal College of General Practitioners

Published for the College by E. & S. Livingstone Limited, Teviot Place,
Edinburgh and

Printed by The Devonshire Press Limited, Torquay

In the treatment of ulcers and burns,
or in any skin condition open to infection . . .

It's as easy as ABC to use doubly-interleaved **intertulle fucidin**



Each square slides easily from the pack; dressings no longer stick together. There is no waste. A tulle square is cut to the size you need, the protective interleaving is peeled away and the dressing applied to the lesion. The remaining protective sheet is removed and dressing is completed as required. Intertulle Fucidin has the bactericidal power of Fucidin Ointment against staphylococci and streptococci and remarkable freedom from side-effects.

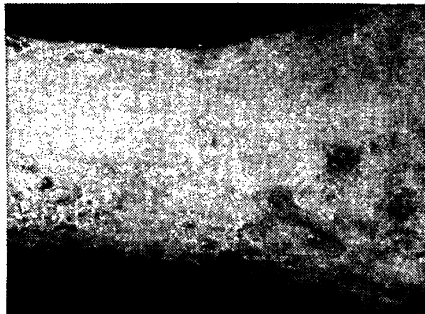
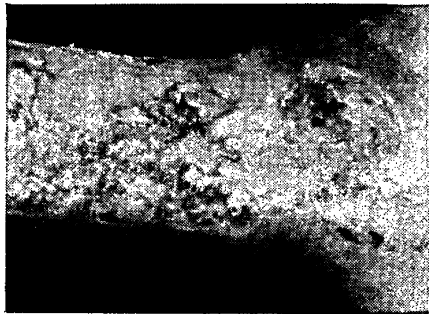
Intertulle Fucidin is presented in special white plastic packs containing 10, 4" x 4" sterile gauze squares, doubly-interleaved for easy use and impregnated with Fucidin Ointment (2% Sodium Fusidate B.P. in a neutral ointment base) — the logical topical antibiotic.

Now available on E.C.10

a case in point: *Left:* Varicose ulcer on leg of 74 year-old man.

Right: After 5 weeks' treatment with Intertulle Fucidin.

Photographs from Leo Laboratories' Library of British Dermatological Case Histories, 1969.



Write for full information

LEO LABORATORIES LIMITED • HAYES • MIDDLESEX • Telephone 573 6224