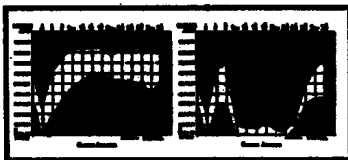


Prevent breakthrough hyperacidity Rx Nulacin

When your patient presents with symptoms of gastric hyperacidity, Nulacin therapy provides continuous neutralisation—essential for the prevention and healing of peptic ulcer since most peptic ulcers arise and recur in the presence of free acid.

The Nulacin^{*} tablet is prepared from whole milk combined with dextrins and maltose, together with magnesium trisilicate 230 mg., magnesium oxide 130 mg., calcium carbonate 130 mg., magnesium carbonate 30 mg., Ol. Menth. Pip. q.s.



Full information is available on request to

 **Bencard**
Brentford · England

^{*} regd.

Transform the Parkinsonian
patient with

'KEMADRIN'

in Paralysis Agitans and
Drug-induced Parkinsonism

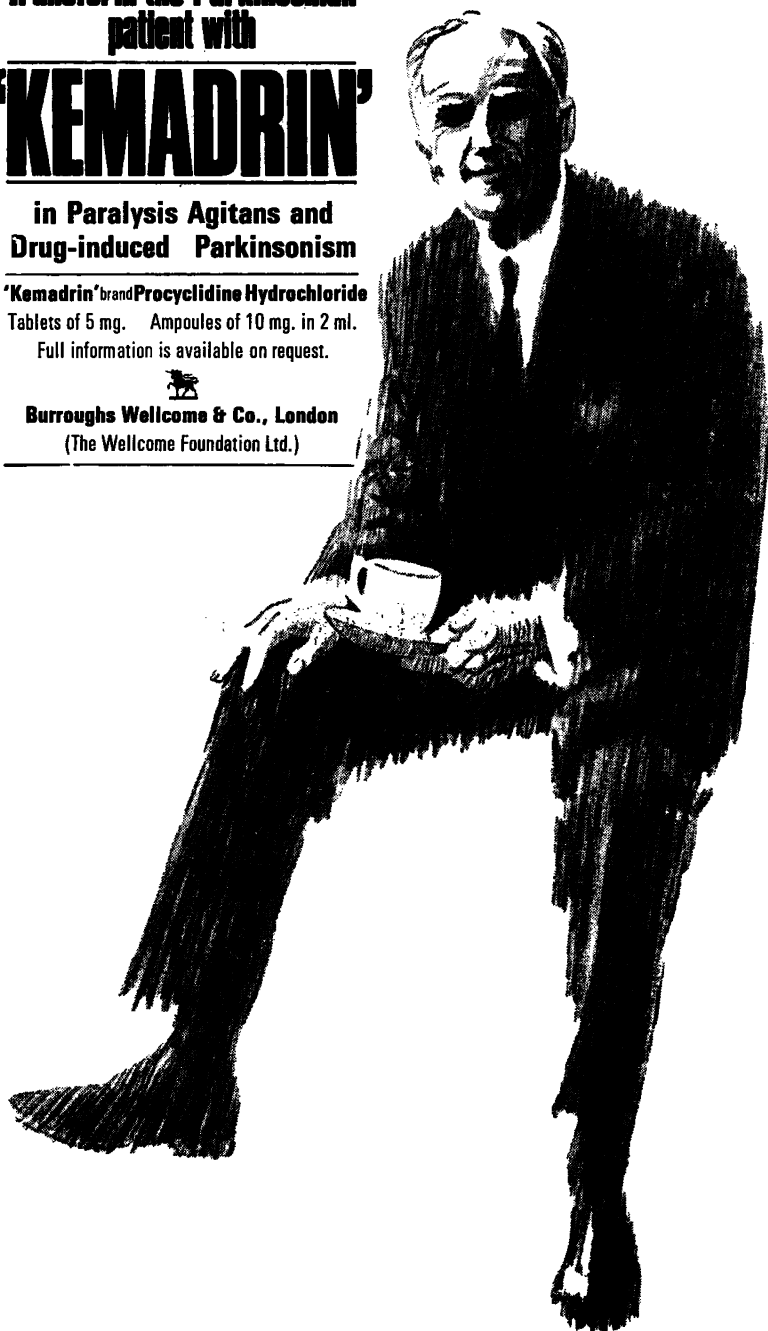
'Kemadrin' brand **Procyclidine Hydrochloride**

Tablets of 5 mg. Ampoules of 10 mg. in 2 ml.

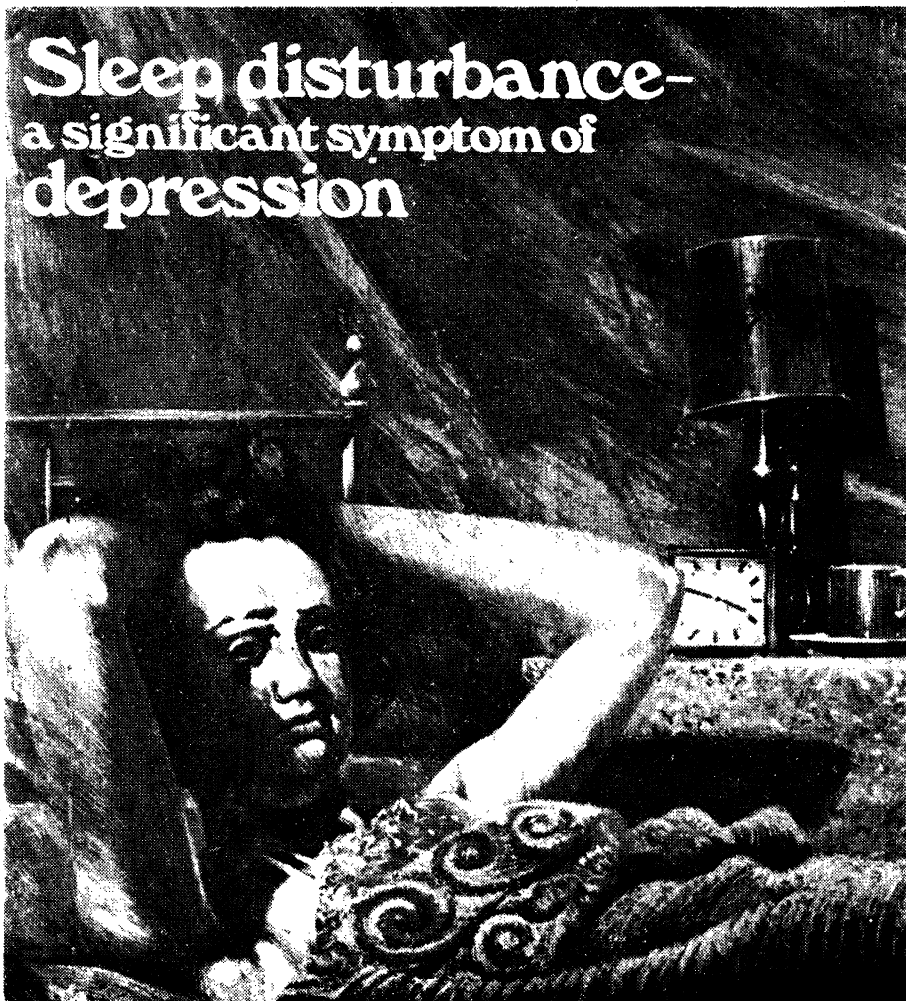
Full information is available on request.



Burroughs Wellcome & Co., London
(The Wellcome Foundation Ltd.)



Sleep disturbance— a significant symptom of depression



MA 6495

Disturbance of sleep is one of the commonest
and most troublesome signs of depression

'Surmontil' offers two ways out

First a rapid restoration of sleep rhythms
often within twenty-four hours

Then a powerful antidepressant action
usually in seven-ten days

the double action of Surmontil



'Surmontil'* is presented as
tablets containing 25 mg. and
10 mg. trimipramine, and as
injection solution, 12.5 mg.
per ml.

Full information is available
on request
An M&B brand Medical
Product.

*trade mark
May & Baker Ltd
Dagenham Essex RM10 7XS



"ANNALS OF GENERAL PRACTICE"

The Journal of the Royal Australian College
of General Practitioners

**"ANNALS
OF
GENERAL PRACTICE"**

*which is published at two-
monthly intervals, encompasses:*

All aspects of general practice
Medical education, *including*
preparation for the College
Examination
Training of general practitioners;
as teachers, preceptors, and
counsellors
Practice management
Research — into diseases; social and
family problems
Preventive medicine
Reports of seminars and conferences
Original articles

*The Chairman of the Editorial
Committee is . . .*

DR J. G. SIMPSON

The Royal Australian College
of General Practitioners
was formed in 1958
with a roll of 400 Foundation
Members. There are now
approximately 3000 Fellows,
Members and Associates,
which represents almost
half the number of general
practitioners in Australia

The JOURNAL reports the many
activities of the College, and
contains much valuable information
for general practitioners.
It is sent — upon request — to all
parts of the world,
in many cases to members of other
disciplines of medicine.

SUPPLEMENTS are periodically
produced—at no additional cost
to subscribers — and include
such memoranda as *Research Digest*,
and *Vocational Training for General
Practice*.

*The Managing Editor of the
Journal is*

MR JON A. BAKER

Annual subscription is A\$6.00

Single numbers A\$1.00

**Subscriptions are welcomed from non-
college members!**

All communications should be sent to:

The Managing Editor
"Annals of General Practice"
254 Albert Street
East Melbourne, 3002
Victoria, Australia



**Tanderil®
Geigy**

**Helps
arthritic
joints
to move
again
without
pain**

*4 major
benefits of Tanderil
antirheumatic therapy*

Intense Analgesic activity

*Significant reduction of
morning stiffness*

Improved joint mobility

Reduced joint swelling

Availability

Tanderil is available as coffee-
coloured, sugar-coated tablets
containing 100 mg. and as
suppositories containing 200 mg.
4-butyl-2-(4-hydroxyphenyl)-
phenylpyrazolidine-3,5-dione
monohydrate (Oxyphenbutazone,
B.P.)

*Detailed literature describing the
product will be supplied on request*

**Geigy (U.K.) Limited
Huddersfield Industrial Estate
Macclesfield Cheshire**



An outstanding year in British Medical History

1948 will be remembered as the year in which the National Health Service came into being.

It may also be remembered as the year in which Roter tablets first became available to the Medical Profession in the United Kingdom.

In the intervening 21 years Roter has provided superlative service to those suffering from peptic ulcer and its sequelae, *and has not been superseded.*

The record is impressive. Hundreds of thousands of chronic cases, both of the duodenal and gastric varieties—resistant to conventional treatment—have been relieved of their pains and miseries and given a new lease of life. Equally good service has been rendered to post-operative relapse cases.

Roter is still the most effective and economical therapy available. N.H.S. basic cost of initial treatment is 5/-d. per week and maintenance—where needed—only 2/6d. per week or less.

Roter treatment is ambulant and produces no side effects.

Literature and samples available on request from:

F.A.I.R. Laboratories Ltd., Twickenham, Middlesex



Migril masters migraine

Stops headaches. Stops nausea.

Ergotamine — specific for the early control of the headache and ocular disturbances — may also aggravate the nausea and vomiting of migraine. By the inclusion of cyclizine in MIGRIL, any tendency to nausea and vomiting, due to the full therapeutic dose of ergotamine, or the migraine itself, is averted.

Each tablet contains 2 mg ergotamine tartrate, BP, 50 mg cyclizine hydrochloride, BP and 100 mg caffeine hydrate, BP. Full information is available on request.



Wellcome Burroughs Wellcome & Co. (The Wellcome Foundation Ltd.) Dartford, Kent

*Trade Mark

BRITISH POSTGRADUATE MEDICAL FEDERATION

(UNIVERSITY OF LONDON)

COURSES FOR GENERAL PRACTITIONERS AND LOCAL AUTHORITY MEDICAL OFFICERS, JANUARY—AUGUST, 1970.

Applications for places on the following **INTENSIVE COURSES** should be made to the Secretary, British Postgraduate Medical Federation, 14 Millman Mews, London, W.C.1, unless otherwise indicated. They should state if the application is or is not made under the Scheme for N.H.S. Practitioners.

It is regretted that, owing to the increasing number of applications to be dealt with in the space of a few weeks, we can no longer accept **TELEPHONE APPLICATIONS** or **ENQUIRIES**, so please **WRITE** to us. Your letter will be dealt with in strict order of application.

INTENSIVE COURSES

<i>Date</i>	<i>No. of days</i>	<i>Subject</i>	<i>Hospital</i>
23rd—27th February	5	Obstetrics & Gynaecology	Institute of Obstetrics & Gynaecology, S.W.3.
23rd—27th February	5	Rheumatology & Physical Medicine	Middlesex Hospital, W.1.
26th—27th February	2	Dermatological Manifestations of Cancer	Royal Marsden Hospital, S.W.3.
2nd—6th March	5	Dental Anaesthesia	King's College Hospital Dental School, S.E.5.
9th—13th March	5	Research Methods & Statistics	The Royal College of General Practitioners, 14 Princes Gate, Hyde Park, S.W.7.
16th—20th March	5	Psychiatry	Institute of Psychiatry, S.E.5.
13th—17th April	5	Cardiology	Institute of Cardiology, W.1.
13th—17th April	5	Obstetrics & Gynaecology	King's College Hospital, S.E.5.
13th—17th April	5	General	London Undergraduate & Postgraduate Teaching Hospitals.
13th—17th April	5	General	St. Mary's Hospital, Harrow Road, W.9. (Formerly Paddington General Hospital)
20th—24th April	5	Cardiology & Endocrinology	Whittington Hospital Academic Centre, N.19.
20th—24th April	5	Psychiatry & its Relationship with Psychosomatic disease.	Central Middlesex Hospital, N.W.10.
27th April—1st May	5	General	The Medical Centre, St. Charles' Hospital, W.10.
*27th April—1st May	5	"Early Years in General Practice"	The Royal College of General Practitioners, 14 Princes Gate, Hyde Park, S.W.7.
27th April—1st May	5	General	Guy's Hospital, S.E.1.
27th April—2nd May	5½	General	Sussex Postgraduate Medical Centre, Brighton.
4th—8th May	5	Cardiology	Institute of Cardiology, W.1.
4th—8th May	5	Paediatrics	Institute of Child Health, W.C.1.
4th—8th May	5	Psychiatry	St. George's Hospital, S.W.1. and St. Thomas' Hospital, S.E.1.
4th—8th May	5	Pulmonary Diseases, Renal Disorders & Endocrinology	Royal Northern Hospital, N.7.—Medical Centre.
4th—8th May	5	General	Chelsea & Kensington Group.
4th—9th May	5½	General	Windsor & District Postgraduate Medical Centre, King Edward VII Hospital, Windsor.
11th—15th May	5	Chest, Heart & Alimentary Diseases	Central Middlesex Hospital, N.W.10.
11th—15th May	5	Obstetrics	University College Hospital, W.C.1. and City of London Maternity Hospital, N.4.
11th—16th May	5½	General	Sussex Postgraduate Medical Centre, Brighton.
11th May	1	Psychiatry	St. Bartholomew's Hospital, E.C.1.
12th May	1	Rheumatology	Westminster Hospital, S.W.1.
13th May	1	Paediatrics	Westminster Children's Hospital, S.W.1.
14th May	1	Cardiology	Charing Cross Hospital, W.C.2.
15th May	1	Dermatology	St. Thomas' Hospital, S.E.1.
18th—22nd May	5	Paediatrics	Institute of Child Health, W.C.1.
1st—5th June	5	General	East Kent Hospitals. (Applications to Kent Postgraduate Medical Centre, Kent & Canterbury Hospital, Canterbury).
1st—5th June	5	Gastroenterology & Renal Disorders	Royal Free Hospital, W.C.1.
1st—5th June	5	General	Central Middlesex Hospital, N.W.10.
1st—5th June	5	Dental Anaesthesia	Institute of Dental Surgery, W.C.1.
8th—12th June	5	General	London Undergraduate & Postgraduate Teaching Hospitals.
15th—19th June	5	Teaching Course for General Practitioner Trainers	The Royal College of General Practitioners, 14 Princes Gate, Hyde Park, S.W.7.
15th—19th June	5	Obstetrics & Gynaecology	Institute of Obstetrics & Gynaecology, S.W.3.
13th—17th July	5	General	King's College Hospital, S.E.5.
20th—24th July	5	Dermatology	Institute of Dermatology, W.C.2.
27th—31st July	5	Dermatology	Institute of Dermatology, W.C.2.
27th—31st July	5	Dental Anaesthesia (for General Practitioners with limited experience)	Royal Dental Hospital of London, W.C.2.

*Specially designed as a **TRAINING COURSE**. Principals and Assistants as well as Trainees may attend.

INDIVIDUAL ATTACHMENTS in:—

- (a) **OBSTETRICS**—residential (b) **OTHER SPECIALTIES**—non-residential
May be arranged for one or two weeks.
(Applications to Secretary, British Postgraduate Medical Federation)
(c) **VENEREOLOGY** (Applications to Dr. C. S. Nicol, St. Thomas' Hospital, S.E.1.)
(d) **LARYNGOLOGY & OTOTOLOGY** (Applications to the Institute of Laryngology and Otolaryngology, Royal National Throat, Nose and Ear Hospital, Gray's Inn Road, London, W.C.1.)

Applications for places on the following **COURSES & CONFERENCES** should be made to the Hospitals unless otherwise indicated.

WEEKEND COURSES & ONE-DAY CONFERENCES

<i>Date</i>	<i>Subject</i>	<i>Hospital</i>
17th January	"Emergencies"	West Kent General Hospital, Maidstone.
7th—8th February	Child Psychiatry	Queen Mary's Hospital for Children, Carshalton, Surrey.
7th—8th February	Psychiatry	Postgraduate Medical Centre, St. Helier, Carshalton, Surrey.
15th February	Obstetrics & General Medicine	General Hospital, Rochford, Essex.
21st February	Rheumatic Diseases	Harefield & Northwood Postgraduate Medical Centre, Mount Vernon Hospital, Northwood, Middlesex.
21st—22nd February	Obstetrics	Kent Postgraduate Medical Centre at Canterbury, Kent & Canterbury Hospital, Canterbury.
21st—22nd February	Psychiatry	Severalls Hospital, Colchester.

WEEKEND COURSES & ONE-DAY CONFERENCES

<i>Date</i>	<i>Subject</i>	<i>Hospital</i>
28th February	Rheumatic Diseases	Princess Alexandra Hospital, Harlow. (Applications to the Librarian).
28th February—1st March	"Family, Community & Mental Health"	University of Sussex, Falmer. (Applications to St. Francis Hospital, Haywards Heath, Sussex)
28th February—1st March	General	Dartford Group (Applications to Medical Centre, Joyce Green Hospital, Dartford).
28th February—1st March	Diagnostic Methods in Paediatric General Treatment.	Evelina Children's Hospital, S.E.1.
1st March	Symposium on Cardiology	The Medical Centre, St. Peter's Hospital, Chertsey, Surrey.
7th March	Gastroenterology	Windsor & District Postgraduate Medical Centre, King Edward VII Hospital, Windsor.
7th March	Rheumatology	Tunbridge Wells Postgraduate Medical Centre, Kent & Sussex Hospital, Tunbridge Wells.
7th—8th March	Obstetrics	Hackney Hospital, E.9.
7th—8th March	Practice Organisation	The Royal College of General Practitioners, 14 Princes Gate, Hyde Park, S.W.7.
*13th—15th March (Residential)	"Psychiatry for the General Practitioner"	National Association for Mental Health, 17 Portland Place, W.1.
14th March	Ophthalmology in General Practice	Kent County Ophthalmic & Aural Hospital, Maidstone.
14th—15th March	Paediatrics	Fulham Hospital, W.6.
14th—15th March	General	Luton Medical Centre, Luton & Dunstable Hospital, Luton.
14th—15th March	Psychiatry	Warley Hospital, Brentwood, Essex.
14th—15th March	General	Redhill Medical Centre, Redhill General Hospital, Redhill.
20th—21st March	Rheumatology	The London Hospital Medical College, E.1. (Applications to the Dean).
21st—22nd March	Paediatrics	University College Hospital, W.C.1. (Applications to Paediatric Department).
21st—22nd March	Recent Advances in Practice Organisation Methods	Chelwood Gate, Sussex. (South East England Faculty, The Royal College of General Practitioners—applications to Hon. Secretary, Woodlawn, Henfield, Sussex.)
21st—22nd March	Thyroid Disease	Kent Postgraduate Medical Centre at Canterbury, Kent & Canterbury Hospital, Canterbury.
21st—22nd March	General Medicine	St. Albans Medical Centre, Normandy Road, St. Albans.
21st—22nd March	Psychiatry	Runwell Hospital, Nr. Wickford, Essex.
11th—12th April	General	Southend General Hospital, Southend-on-sea, Essex.
18th April	Preventive Medicine & Industrial Disease	The Medical Centre, St. Peter's Hospital, Chertsey, Surrey.
18th April	Orthopaedic & other ailments in School Children	Windsor & District Postgraduate Medical Centre, King Edward VII Hospital, Windsor.
18th—19th April	Alcoholism & Drug Dependence	St. Bernard's Hospital, Southall, Middlesex.
25th—26th April	"Neurology & Neurosurgery:—Epilepsy; Cerebrovascular Disease; Disorders of the Spinal Cord."	Romford Medical Academic Centre, Oldchurch Hospital, Romford, Essex.
25th—26th April	General	St. Nicholas Hospital, Plumstead, S.E.18.
1st—2nd May	Physical Medicine	St. Thomas' Hospital, S.E.1. (Applications to Department of Physical Medicine).
2nd—3rd May	Cardiology	Hackney Hospital, E.9.
2nd—3rd May	"Psychiatry 1970"	Guildford Medical Centre, St. Luke's Hospital, Guildford.
2nd—3rd May	General	Harefield & Northwood Postgraduate Medical Centre, Mount Vernon Hospital.
2nd—3rd May	"Emergency Treatment"	Epping Medical Centre, St. Margaret's Hospital, Epping.
2nd—3rd May	Management of Common Medical Conditions	Education Centre, Greenwich District Hospital, S.E.10.
9th—10th May	Early Diagnosis & Treatment of Carcinoma of the Breast	Elizabeth Garrett Anderson Hospital, N.W.1.
9th—10th May	Orthopaedics & Trauma in General Practice	St. Ann's General Hospital, St. Ann's Road, Tottenham, N.15.
9th—10th May	General	Chichester Postgraduate Medical Centre, St. Richard's Hospital, Chichester.
14th May	"Home Dialysis"	Royal Free Hospital, Lawn Road, N.W.3. (Applications to the Renal Unit).
15th—16th May	Paediatrics	St. Thomas' Hospital, S.E.1. (Applications to Children's Department).
16th May	Symposium on Endocrine Disease (including Diabetes)	The Medical Centre, St. Peter's Hospital, Chertsey, Surrey.
30th—31st May	Geriatrics	St. Helen's Hospital Medical Centre, Hastings.
6th—7th June	"Differential Diagnosis & Treatment of Abdominal Pain"	Epsom Medical Centre, Epsom District Hospital, Epsom.
6th—7th June	Obstetrics	Brook General Hospital Postgraduate Medical Centre, Shooter's Hill Road, Woolwich, S.E.18.
6th—7th June	Child Psychiatry	Institute of Child Health, Guilford Street, W.C.1.
14th June	"Selection for Surgery"	Lewisham Medical Centre, Lewisham Hospital, S.E.13
27th—28th June	Child Health	Queen Mary's Hospital for Children, Carshalton, Surrey.

*Additional Tuition Fee payable by Doctors attending.

CONDITIONS FOR DEPARTMENT OF HEALTH AND SOCIAL SECURITY GRANT

All the courses and attachments are open to PRINCIPALS and ASSISTANTS in General Practice in the National Health Service, and tuition fees and allowances (subsistence and travelling expenses) are provided for courses equivalent to 22 half-day sessions in each academic year, subject to certain conditions.

Doctors travelling from Scotland or Northern Ireland will only be eligible for a grant to attend intensive courses of 10 or more sessions.

Other doctors may attend on payment of a fee of £16 10s. for one week or otherwise pro-rata.

*TRAINEE GENERAL PRACTITIONERS are not eligible to attend refresher courses designed for General Practitioners. They are, however, eligible to attend orientation courses for new entrants. They are also eligible for individual attachments to study the services of local health authorities, occupational health authorities or other special aspects. The maximum entitlement for this type of attachment for trainees will be 60 sessions in an academic year.

ATTENDANCE REGISTERS

The attention of general practitioners is drawn to the necessity for signing attendance registers at each of the sessions which they attend. This is essential to ensure payment of allowances and expenses by the Department of Health and Social Security.

SENIORITY PAYMENTS & POSTGRADUATE TRAINING ALLOWANCE

All attendances by General Practitioners at teaching periods advertised in this programme count towards the number of sessions required for Seniority Payments and the Postgraduate Training Allowance. General Practitioners must be careful to sign the register of attendance provided to substantiate their claims.

All enquiries on this subject should be directed to Executive Councils or to the Department of Health and Social Security and NOT to the British Postgraduate Medical Federation.

NOTES

THE PRACTITIONER

The Leading Monthly Medical Journal

Founded



in 1868

JANUARY 1970

SPECIAL NUMBER

on

PAEDIATRIC PHARMACOLOGY

In no field of medicine has the influx of potent new drugs produced a more dramatic change than in paediatrics. In this Special Number twenty distinguished paediatricians, drawn from all parts of the British Isles, Australia and Canada, have cooperated in producing a unique and outstanding review of the present position of these drugs in the prevention and treatment of the diseases of infancy and childhood.

200 pages of text. Price 10s. (by post 11s. 9d.)
(but included in the annual subscription without extra cost)

The annual subscription is £3 post free (home and overseas), Canada and U.S.A. \$9.00. Medical Students are granted a subscription concession at 25s., Canada and U.S.A. \$4.00. Single copies 5s. each (postage 1s.). Special Numbers 10s. each (postage 1s. 6d.).

SUBSCRIBE NOW

To: Subscription Manager, THE PRACTITIONER, 5 Bentinck Street, London, W.1.
I enclose remittance £3. Please send me *The Practitioner*, post free, for one year beginning with the January 1970 Special Number, or

I enclose remittance 11s. 9d. Please send me the January Special Number

Name and Degrees.....
BLOCK LETTERS PLEASE

Address

.....

..... S.M.J.

Itching for sleep?

Urticaria is often at its worst at night-time. Pro-Actidil* taken in the evening, brings relief during the night and with its sustained antihistamine effect goes on working during the next morning and afternoon.

The three-layered Pro-Actidil presentation is effective in the treatment of allergic dermatoses especially if associated with urticaria, angioneurotic oedema, seborrhoeic eczema, pruritus, allergic asthma, and vasomotor rhinitis.

Pro-Actidil tablets each contain 10 mg triprolidine hydrochloride. Also available: Actidil* tablets, each containing 2.5 mg triprolidine hydrochloride (useful for daytime use and when a short duration of action is required), and as Actidil Elixir containing 2 mg in each 5 ml.

*Trade Marks

Full information is available on request.

Pro-Actidil
sustained relief in urticaria



Wellcome

Burroughs Wellcome & Co.
(The Wellcome Foundation Ltd.) Dartford, Kent.

All your fees paid, plus over £1000 a year while a Medical student.

As a Medical Cadet in the Royal Army Medical Corps, all your tuition fees are paid by the Army. In addition, you are paid £1,027 a year (£1,567 if you are married) and are eligible for allowances.

You can apply for a Medical Cadetship if you have passed your second MB or its equivalent, are under 25, and have a place at a medical school in the United Kingdom or Eire. If you are about to take your second MB, you may still apply; but your acceptance will be conditional on your passing the examination.

If accepted as a Medical Cadet, you are given the probationary rank of 2nd Lieut. On qualification, you are promoted Lieut. and are paid as such while you fulfil your pre-registration appointment – either at a civilian hospital of your own choice, or at certain military hospitals. After being fully registered, you are promoted Captain, and take up

M.3

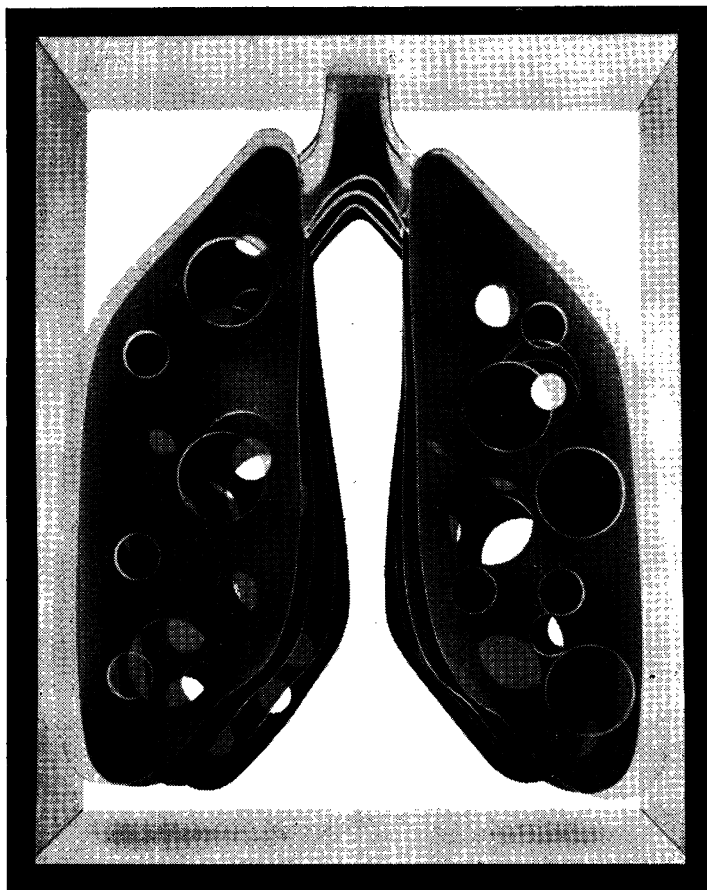
your duties in the RAMC.

Your obligation is then for five years of service on a Short Service Commission. During those five years, you will have a good chance of travel, make many friends, have ample leave (six weeks' paid leave a year, with a locum provided by the Army).

During that period you can, if you like, apply for a Regular Commission. Or you can leave the Army for civilian practice, the richer for some valuable experience of General Practice – and for a tax-free gratuity of up to £2,600 according to period of cadetship.

For further information about Medical Cadetships, or to arrange a meeting with an RAMC Officer to answer any questions you may have, write to:

**Colonel E. L. O. Hood
MB, Ministry of Defence
(AMD2), Dept. 310,
Lansdowne House, Berkeley
Square, London W1X 6AA.**



dramatic disappearance of bronchitis pathogens

"... a combination of trimethoprim and sulphamethoxazole provided effective prophylaxis in chronic bronchitis. It dramatically diminished sputum volume, rendered it mucoid and abolished pathogens."¹

This combination, available as SEPTRIN[®], swiftly eradicates a wide range of organisms including the pathogens common in bronchitis—*H. influenzae*, *Pneumococci* and *Klebsiella* sp.

SEPTRIN has been compared in a trial with ampicillin in treating exacerbations of chronic bronchitis. SEPTRIN produced a significantly greater reduction

in sputum volume and of sputum purulence and the trial also showed that SEPTRIN produced a better overall *clinical* response in the bronchitic patients.²

1. *Proceedings of the V International Congress of Chemotherapy* (1967) Supplement (A1-5a/3) 107.

2. *Postgrad med J*, (1969) 45 SUPPLEMENT (NOVEMBER) 86
SEPTRIN Tablets, SEPTRIN Paediatric Suspension and SEPTRIN Paediatric Tablets contain trimethoprim and sulphamethoxazole.



Full information available on request.

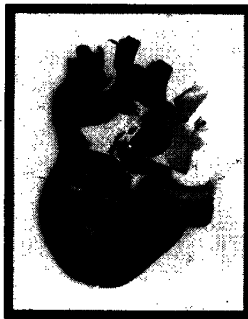
Burroughs Wellcome & Co., Dartford, Kent,
(The Wellcome Foundation Ltd.)

Septtrin—an advance on the antibiotics

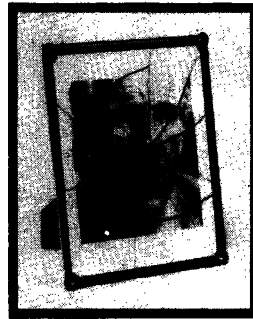
flu can be a killer Influvac can save lives



Chronic lung disease



Chronic heart disease



The Elderly

High Risk

'Flu can be a life-threatening infection in patients with chronic or debilitating disease. The danger is that 'flu will be succeeded by secondary infection such as pneumonia. It is in those patients whose resistance is already compromised by pre-existing disease that the mortality is highest.

This is why health authorities in many countries now strongly recommend that such high-risk patients be protected against 'flu by routine vaccination.

Prophylaxis

Patients with chronic heart and lung conditions and those in the age group 50+ must be protected from the 'flu viruses. Prophylactic immunization is the only effective measure. Mortality from influenza may be reduced dramatically by routine vaccination.

Influvac

Influvac is a potent, highly purified, aqueous vaccine containing inactivated influenza virus. It confers a maximal degree of protection against the same or closely related strains of influenza virus as those included in the vaccine. The amount of antibody formation is quantitatively related to the amount of antigen in the vaccine. There is a limit to the amount of antigen necessary for optimal antibody formation so that more antigen will not

increase the antibody titre. Influvac contains this maximum, distributed over those strains that are likely to circulate in the coming season. Thus it offers the best possible protection. Vaccination produces a maximum level of antibodies within approximately two weeks. The period of immunity may extend to 12 months, but is at least 6 months. Injections of Influvac are almost painless due to its high purity and to the fact that the virus has been inactivated by means of β -propiolactone instead of formaldehyde. Local or general reactions after inoculation are rare, since Influvac contains a minimal amount of protein (measured as nitrogen).

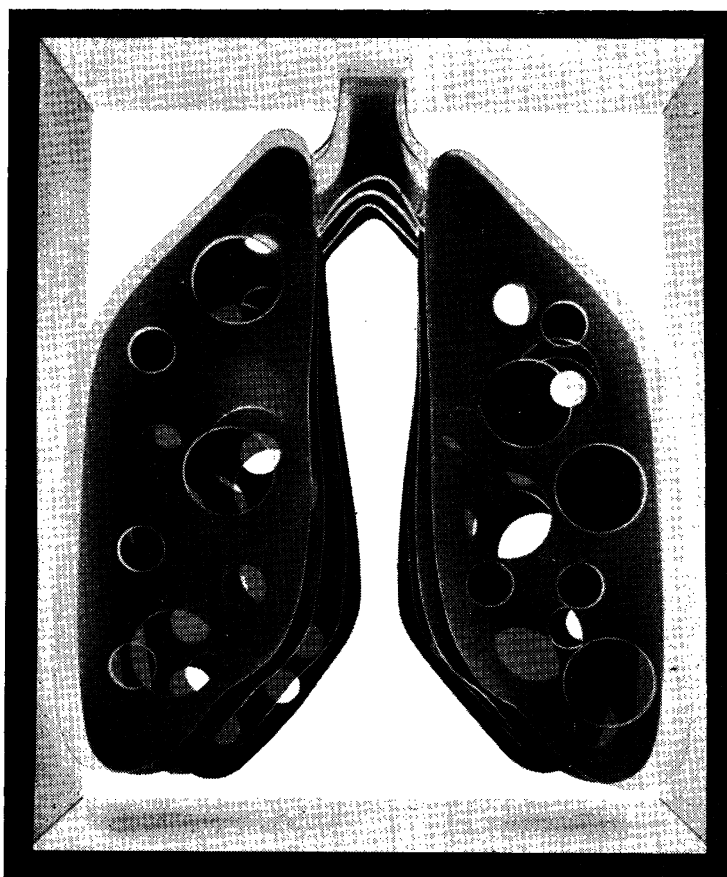
Presentation and Basic N.H.S. Prices Influvac D.S. 1 ml. (Cartrix Disposable Syringe) 12/-. Influvac 1 ml. ampoule 10/-. Influvac 10 ml. multi-dose vial 80/-. Influvac 100 ml. multi-dose vial 700/-. Influvac administered by hypospray jet injection team (per dose) 12/6. Quantity rates available on application.

Composition A₂/Hongkong 1/1968 10,500 H.A. units. B/Netherlands 78/1966 7,000 H.A. units. Total virus content 17,500 H.A. units. Full information is available on request.

duphar

Duphar Laboratories Ltd
Basingstoke · Hampshire

duphar



dramatic disappearance of bronchitis pathogens

"... a combination of trimethoprim and sulphamethoxazole provided effective prophylaxis in chronic bronchitis. It dramatically diminished sputum volume, rendered it mucoid and abolished pathogens."¹

This combination, available as SEPTRIN*, swiftly eradicates a wide range of organisms including the pathogens common in bronchitis—*H. influenzae*, *Pneumococci* and *Klebsiella* sp.

SEPTRIN has been compared in a trial with ampicillin in treating exacerbations of chronic bronchitis. SEPTRIN produced a significantly greater reduction

in sputum volume and of sputum purulence and the trial also showed that SEPTRIN produced a better overall *clinical* response in the bronchitic patients.²

1. *Proceedings of the V International Congress of Chemotherapy* (1967) Supplement (A1-5a/3) 107.

2. *Postgrad med J*, (1969) 45 SUPPLEMENT (NOVEMBER) 86
SEPTRIN Tablets, SEPTRIN Paediatric Suspension and SEPTRIN Paediatric Tablets contain trimethoprim and sulphamethoxazole.



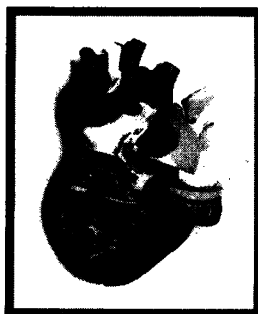
Full information available on request.
Burroughs Wellcome & Co., Dartford, Kent,
(The Wellcome Foundation Ltd.)

Septtrin—an advance on the antibiotics

flu can be a killer **Influvac can save lives**



Chronic lung disease



Chronic heart disease



The Elderly

High Risk

'Flu can be a life-threatening infection in patients with chronic or debilitating disease. The danger is that 'flu will be succeeded by secondary infection such as pneumonia. It is in those patients whose resistance is already compromised by pre-existing disease that the mortality is highest.

This is why health authorities in many countries now strongly recommend that such high-risk patients be protected against 'flu by routine vaccination.

Prophylaxis

Patients with chronic heart and lung conditions and those in the age group 50+ must be protected from the 'flu viruses. Prophylactic immunization is the only effective measure. Mortality from influenza may be reduced dramatically by routine vaccination.

Influvac

Influvac is a potent, highly purified, aqueous vaccine containing inactivated influenza virus. It confers a maximal degree of protection against the same or closely related strains of influenza virus as those included in the vaccine. The amount of antibody formation is quantitatively related to the amount of antigen in the vaccine. There is a limit to the amount of antigen necessary for optimal antibody formation so that more antigen will not

increase the antibody titre. Influvac contains this maximum, distributed over those strains that are likely to circulate in the coming season. Thus it offers the best possible protection. Vaccination produces a maximum level of antibodies within approximately two weeks. The period of immunity may extend to 12 months, but is at least 6 months. Injections of Influvac are almost painless due to its high purity and to the fact that the virus has been inactivated by means of β -propiolactone instead of formaldehyde. Local or general reactions after inoculation are rare, since Influvac contains a minimal amount of protein (measured as nitrogen).

Presentation and Basic N.H.S. Prices Influvac D.S. 1 ml. (Cartrix Disposable Syringe) 12/-. Influvac 1 ml. ampoule 10/-. Influvac 10 ml. multi-dose vial 80/-. Influvac 100 ml. multi-dose vial 700/-. Influvac administered by hypospray jet injection team (per dose) 12/6. Quantity rates available on application.

Composition A₂/Hongkong 1/1968 10, 500 H.A. units. B/Netherlands 78/1966 7,000 H.A. units. Total virus content 17,500 H.A. units. Full information is available on request.

duphar

Duphar Laboratories Ltd
Basingstoke · Hampshire



(infanticide, battered babies and so on), but also ordinary family and personal relationships.

Perhaps we must learn to distrust and compensate for such superficial instinctive reactions to discover the underlying true parental love; in the same way that we must learn to distrust the superficial attractions of the dumb blonde to discover the more stable underlying love of the true Darby and Joan 'pair-bond'. Thus I have travelled full circle to my original theme.

Animal studies are a most wonderful and stimulating preparation for the study of human behaviour but extrapolation from animals to humans requires adequate validation. If anyone is going to liken my behaviour to that of a frustrated baboon or a homosexual duck, I want to be certain that such similes have been adequately shown to apply to human beings.

Human behavioural studies and the validation of animal studies in humans presents a great scientific challenge. I believe that the general practitioner in the community is in a unique position to accept this challenge seriously, methodically and wholeheartedly—never forgetting that animals are animals and humans are humans.

The field is wide open, the challenge is great and the rewards could be far reaching.

REFERENCES

- McWhinney, I. R. (1966). *Lancet*. 1, 419.
 State Papers. Dom. Eliz. Vol. CXCV.N114.
 Koestler, A. (1967). *The ghost in the machine*. London. Hutchinson & Co. (Publishers) Ltd.
 Howard, Eliot. (1920). *Territory in bird life*. Reprinted in New York, Atheneum, 1964.
 Tinbergen, N. (1953). *The herring gull's world*. New York, Wiley.
 Ardrey, R. (1967). *Territorial imperative*. London. Collins.
 Lorenz, K. Z. (1952). *King Solomon's ring*. London. Methuen.
 Russell, C. and W. M. S. (1968). *Violence, monkeys and man*. London. MacMillan.
 Hodgkin, K. (1960). *British Medical Journal*. 11, 854.

ACCOMMODATION AT COLLEGE HEADQUARTERS

Temporary residential accommodation for members and associates and their families is provided at college headquarters. This building, overlooking Hyde Park on one side and Princes Gardens on the other, is central and easily accessible.

The charges, including breakfast, are as follows:

For single rooms	£2 10s. 0d. per night
For double rooms	£4 5s. 0d. per night
For a flatlet (bed-sitting room for two, bathroom and dressing room)	£6 per night or £36 per week
For a self-contained flat (double bedroom, sitting room, hall, kitchen and bathroom)	£42 per week

Children under the age of 12 years cannot be admitted, and dogs are not allowed.

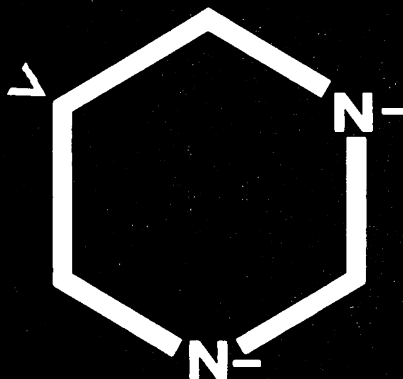
Members and associates may, subject to approval, hire the reception rooms for meetings and social functions. The charges for these are:

Long room (will seat 100)	25 guineas for each occasion
Damask room (will seat 50)	15 guineas for each occasion
Common room and terrace	15 guineas for each occasion

A service charge of 10 per cent is added to all accounts to cover gratuities to domestic staff.

For the convenience of members, four car ports, outside 14 Princes Gate, have been rented by the College and may be hired, at a cost of 10s. 6d. per 24 hours.

Enquiries should be addressed to the Administrative Secretary, The Royal College of General Practitioners, 14 Princes Gate, London, S.W.7. (Tel. 01-584 6262). Whenever possible bookings should be made well in advance.



A new approach to mouth infections Oraldene

Oraldene provides you with an entirely new approach to the local treatment of mouth infections.

Outstanding properties of Oraldene are its wide spectrum of activity and its long lasting effectiveness.

Clinical experience shows that Oraldene has a strong affinity for buccal tissues, and a single rinse provides effective therapy for up to 8 hours^{1,2}.

Oraldene has been shown to be effective against bacterial and fungal oral pathogens³ and this, coupled with its absence of side-effects, makes Oraldene a remarkably effective local treatment

for such conditions as:

- Gingivitis
- Stomatitis
- Dental ulcers
- Aphthous ulcers
- Oral thrush in children
- Geriatric oral infections

Oraldene is also a useful adjuvant to systemic therapy in tonsillitis and pharyngitis⁴.

It does not produce sensitivity and has a soothing and refreshing effect.

Composition: Hexetidine 0.1% w/v 1,3 bis (β-ethylhexyl) 5 methyl-5-amino hexahydropyrimidine.

Full information available from:
William R. Warner & Co. Ltd.,
Eastleigh, Hampshire.

Gingivitis, Stomatitis, Dental Ulcers, Geriatric Oral Infections.

References: 1. Fosdick, L. D. Symposium North Western University, 23rd October, 1958.
2. Lisanti, V. F. (1958) *ibid.* 3. Dukes, C. D. (1959) *Bact. Proc.* p.48 (society report). 4. Fregni, R. (1963) *Clin. ter.*, 27: 46.

Normax takes the **STRAIN** out of constipation

..and promotes comfortable evacuation

Normax is indicated for the treatment of constipation particularly in conditions where it is important that your patients should not strain to stool—coronary thrombosis, cardiac failure, haemorrhoids, episiotomy. Normax has also been used in the treatment of constipation of pregnancy, and in preparation of patients for surgical and radiological procedures. Normax is also indicated for geriatric patients and for patients with spastic colon and diverticulitis.

Composition Each brown capsule contains dioctyl-sodium sulphosuccinate 60 mg., a faecal softener, and 1-8 dihydroxyanthraquinone 50 mg., a mild peristaltic stimulant.

Side Effects No adverse side effects have been reported with Normax. 1-8 dihydroxyanthraquinone may however give the urine an orange tint.

Normax is a registered trade mark

Dosage One to two capsules to be taken at night, or as prescribed.

Presentation & Basic N.H.S. Price Normax capsules are available in bottles of 30 and 250 at a basic N.H.S. price of 4/10 and 26/10 respectively.

Further information available from



Bencard
Brentford · England

'(a) the soaker and waker' '(b) the saturated sleeper'

These are the descriptive titles given by one author* to two main groups of enuretic children. The 'soaker and waker' he describes as timid and apprehensive, though often intelligent. The 'saturated sleepers' are madcaps or tomboys who overexert themselves physically and mentally; they are often defiant and misinterpret attempts at control as lack of love. They are distinguished by their behaviour — 'Those in the first group awake, howling, immediately after wetting the bed. Those in the second group having exhausted themselves, sleep deeply and do not awake till the morrow'.

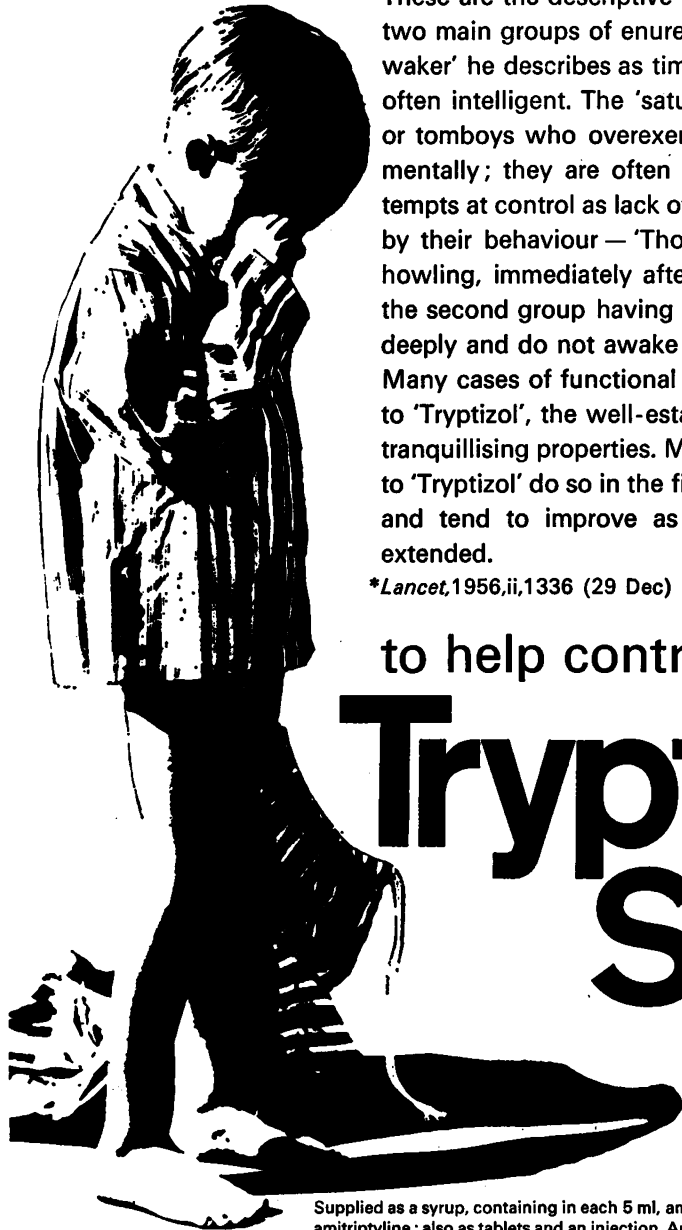
Many cases of functional enuresis respond favourably to 'Tryptizol', the well-established antidepressant with tranquillising properties. Most bedwetters who respond to 'Tryptizol' do so in the first few days of management and tend to improve as the duration of therapy is extended.

**Lancet, 1956, ii, 1336 (29 Dec)*

to help control enuresis

Tryptizol[®] Syrup

Amitriptyline
embonate



Supplied as a syrup, containing in each 5 ml, amitriptyline embonate equivalent to 10 mg amitriptyline; also as tablets and an injection. Amitriptyline embonate was formerly known as amitriptyline pamoate. Detailed information is available to physicians on request.

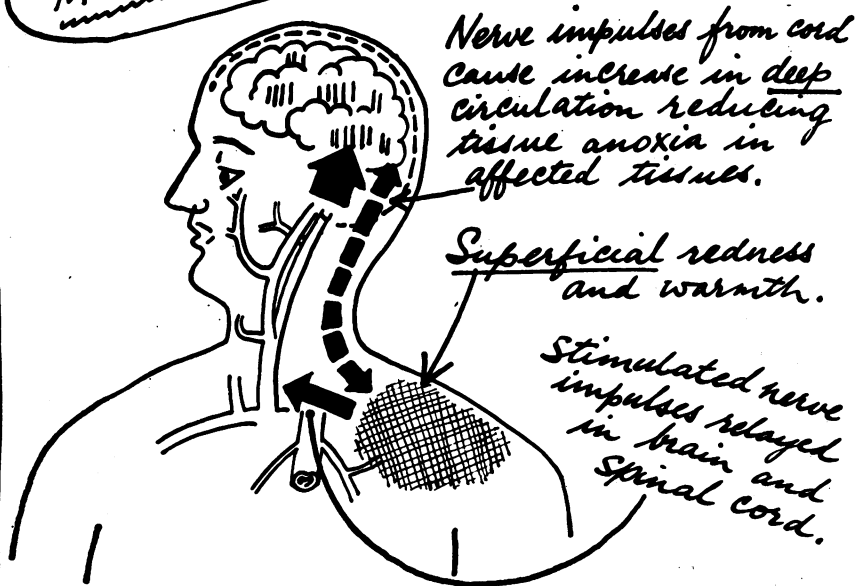
® denotes registered trademark.



Merck Sharp & Dohme Limited, Hoddesdon, Hertfordshire
Telephone, Hoddesdon 67123

RHEUMATIC DISORDERS

THE TRANSVASIN PROCESS—
MORE TO IT THAN MEETS THE EYE!

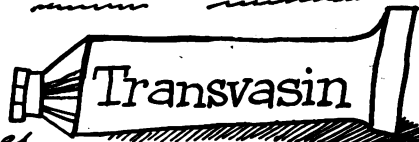


NO adverse effects on blood or stomach

TRANSVASIN HIGHLY ACTIVE

Ethyl nicotinate 120 times

more active than nicotinic acid in penetrating the skin.



MARY: Write for samples and literature to:
Lloyd-Hamol Ltd., 103 Mount Street, London, W.1.
PLEASE.

BIOGASTRONE[®]

carbenoxolone sodium

Specific healing effect

'Carbenoxolone has a specific effect, facilitating healing of gastric ulcer, and is not merely yet another symptomatic measure'. *Brit med J*, 1965, 2: 1274

Patients remain up and about

'It is the only drug therapy for gastric ulcer which has been demonstrated conclusively to accelerate healing, which can be achieved with patients remaining up and about, often at work, with minimum change in diet'. *Gut*, 1965, 5: 19

conclusively shown to heal gastric ulcers

without bed rest or dietary restrictions

Tablets of 50 mg carbenoxolone sodium.
Please write for full prescribing information.



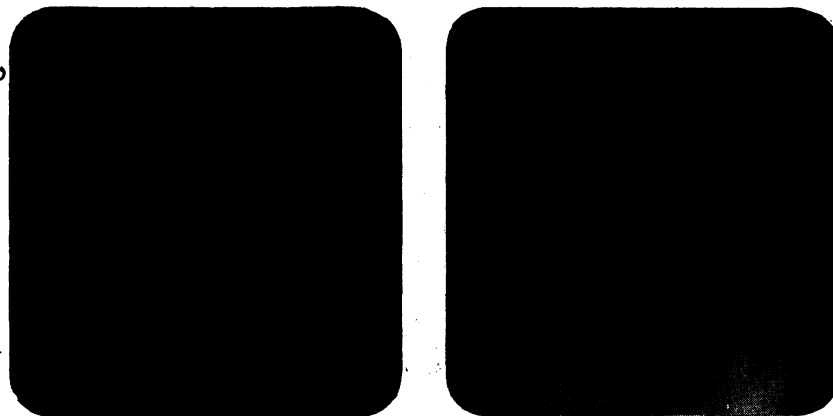
Berk Pharmaceuticals Limited Godalming Surrey England

Made under licence from Biorex Laboratories Ltd., London.

British Patent No. 843,133.

® Regd. Trade Mark.

without
a shadow
of gout*



*radiological evidence showing considerable improvement after 18 months' continuous treatment with 'Benemid'.

Benemid®

Probenecid/MSD

'The diagnosis of gout is usually obvious . . . Occasionally it may be difficult . . . In the asymptomatic hyperuricaemic or carrier stage it may only be recognized by accident . . .'
Practitioner, 1964, 193, 306 (Sep)

Even when chronic gout does not accord with the classic picture—and an elevated serum uric acid can usually settle the doubt—'Benemid' still offers the physician one of the most satisfying ways of controlling the chronic disease.

Available as tablets containing 500 mg probenecid BP.
Detailed information is available to physicians on request.
® denotes registered trademark.



Merck Sharp & Dohme Limited, Hoddesdon
Hertfordshire Telephone, Hoddesdon 67123

9-1470

**THE ROYAL COLLEGE OF GENERAL PRACTITIONERS SCOTTISH COUNCIL
THE IAN DINGWALL GRANT AWARD**

The Scottish Council of The Royal College of General Practitioners invites application for the Ian Dingwall Grant Award which was created at the request of, and with funds generously donated by, The Caledonian Medical Society. The second award of £100 will be made in June, 1970. Applications should reach the Secretary to the Scottish Council, The Royal College of General Practitioners, Livingstone House, 39 Cowgate, Edinburgh, EH1 1JS on or before **1 May 1970**.

Those eligible to apply are doctors who by the date of application have completed a minimum of six months as a trainee or an assistant in general practice in Scotland and who are still so employed at the time of application.

The award is intended to encourage young postgraduates preparing for a career in general practice, by permitting them while still employed as an assistant or trainee to add to their experience in one of the following ways:—

1. By spending a period of two weeks or so in a medical laboratory, library or university department reviewing a specific subject—perhaps in order to prepare a pilot study or to design a programme of continuing study or research which the applicant would be completing later on in his career. This might include, for example, preparation back-ground reading with a view to commencing a study which would eventually lead to the submission of an M.D. thesis.

2. The young postgraduate could use his prize money in order to plan visits to selected practices, health centres, academic departments or other institutions in the United Kingdom.

3. Where an individual has already planned a visit abroad the prize money might be used to supplement such a visit if deemed appropriate.

These suggestions are by no means all inclusive. An applicant is free to submit other proposals which will be considered by the selection committee provided they satisfy the broad intentions for which their prize was created.

Any applicant should consult with his principal before making a submission. Trainees and assistants should be thoroughly conversant with the existing provisions for extended and intensive courses, as application merely to support each attendance at a course would not be considered.

The form of application will be four typed copies of a statement prepared by the applicant indicating the ways in which, if he is successful, he would use the prize money. To his statement he should attach a brief *curriculum vitae*.

Any request for further information should be addressed to the **Secretary to the Scottish Council, The Royal College of General Practitioners, Livingstone House, 39 Cowgate, Edinburgh, EH1 1JS**.

University of Bristol
Departments of Mental Health and
Extra-Mural Studies

PSYCHOTHERAPY WORKSHOP
April 19th-24th, 1970

This workshop is intended for those mental health professionals and general practitioners who have a few years experience, and now seek further training and insight into the processes of psychotherapy. £24. 0. 0. resident membership, £16. 0. 0. non-resident. Further particulars and application forms from: The Department of Extra-Mural Studies, University of Bristol, 20a Berkeley Square, Bristol. BS8 1HR.

QUALIFIED HUSBAND AND WIFE wanted to complete group practice of 4 doctors now reduced to 2. East Anglian Sea and Broadland town. Over 10,000 patients. Partial appointment system. Ancillary staff including nurse. Wife need not be full time. Flat available. Box 107. The Journal of the Royal College of General Practitioners, 104 Gloucester Place, London W1H 4AE.

CLASSIFIED ADVERTISEMENTS

The charge for this service is 3s. 0d. per line, plus 2s. 6d. if a Box Number is required. Advertisements should be addressed to: The Journal of the Royal College of General Practitioners, Classified Advertisement Department, 104 Gloucester Place, London W1H 4AE.

The Journal of the Royal College of Physicians of London

This Journal is concerned with the integration of scientific disciplines in the practice of medicine and, by providing a wide ranging commentary on the growing points of medicine, is an essential complement to the specialised journals.

CONTENTS OF VOLUME 4, No. 2

A. C. Allison	<i>"Genetic factors in Autoimmune Disease."</i>
Sheila T. Callender	<i>"The Diagnostic Use of Radioactive Isotopes in Haematology."</i>
A. M. Cooke	<i>"The College and Europe."</i>
L. E. Glynn	<i>"The Breakdown of Immunological Tolerance."</i>
Sir George Godber	<i>"Medical Manpower and the Needs of the Service."</i>
R. B. Goudie	<i>"The Clinical Significance of Autoantibody Detection."</i>
J. Hamburger	<i>"Recent Research in Kidney Transplantation."</i>
Walpole Lewin	<i>"Hospital Medical Staffing Structure."</i>
Ida Macalpine and R. A. Hunter	<i>"Daniel Oxenbridge, John Twysden, and William Harvey."</i>
Sir John Richardson	<i>"Hospital Medical Administration."</i>

Editor	A. Stuart Mason, M.D., F.R.C.P.
Publication	Published quarterly in October, January, April and July.
Subscription	80/- per annum (including postage).
All enquiries to Editorial Office	Royal College of Physicians of London, 11 St Andrew's Place, Regent's Park, London, N.W.1.
Publishing Office	Pitman Medical and Scientific Publishing Co. Ltd., 31 Fitzroy Square, London, W.1.



The Royal College of General Practitioners
Published for the College by E. & S. Livingstone Limited, Teviot Place,
Edinburgh and

Printed by The Devonshire Press Limited, Torquay