

## E. & S. LIVINGSTONE LTD.

### **CARCINOMA OF THE LUNG**

Edited by J. R. BIGNALL, M.A., M.D., M.R.C.P.  
310 pages 69 illustrations

**55s.**

### **USES OF EPIDEMIOLOGY**

By J. N. MORRIS, M.A., F.R.C.P., D.P.H.  
143 pages 28 illustrations

**17s. 6d.**

### **STAPHYLOCOCCUS PYOGENES AND ITS RELATION TO DISEASE**

By S. D. ELEK, M.D., Ph.D., D.Sc., D.P.H.  
775 pages 81 illustrations

**84s.**

### **THE PRINCIPLES AND PRACTICE OF MEDICINE**

*Fourth Edition.* Edited by SIR STANLEY DAVIDSON, M.D., F.R.C.P., M.D. (Oslo).  
1,080 pages 109 illustrations

**35s.**

### **THE PHYSICAL TREATMENT OF VARICOSE ULCERS**

By R. ROWDEN FOOTE, F.I.C.S., M.R.C.S., L.R.C.P., D.R.C.O.G.  
138 pages 120 illustrations

**15s.**

### **DISEASES OF THE NERVOUS SYSTEM**

*Ninth Edition.* By SIR FRANCIS WALSHE, M.D., D.Sc., F.R.C.P., F.R.S.  
390 pages 89 illustrations

**30s.**

**TEVIOT PLACE, EDINBURGH**

## **BRITISH MEDICAL JOURNAL**

*the leading  
medical Journal  
and the  
most widely  
read*

★

*Published weekly  
Subscription  
£6 6s. p.a.*

## **SPECIALIST JOURNALS**

**ABSTRACTS OF WORLD MEDICINE**  
*Monthly. Subscription £4 4s. p.a.*

**BRITISH JOURNAL OF OPHTHALMOLOGY**  
*Monthly. Subscription £6 p.a.*

**ARCHIVES OF DISEASE IN CHILDHOOD**  
*Bi-monthly. Subscription £4 4s. p.a.*

**JOURNAL OF CLINICAL PATHOLOGY**  
*Bi-monthly. Subscription £4 4s. p.a.*

**ANNALS OF THE RHEUMATIC DISEASES**  
**BRITISH HEART JOURNAL**

**BRITISH JOURNAL OF INDUSTRIAL MEDICINE**  
**BRITISH JOURNAL OF PREVENTIVE AND SOCIAL MEDICINE**

**BRITISH JOURNAL OF VENEREAL DISEASES**  
**JOURNAL OF NEUROLOGY, NEUROSURGERY AND PSYCHIATRY**

**MEDICAL AND BIOLOGICAL ILLUSTRATION**  
**THORAX**

*Published quarterly. Subscription £3 p.a.*

**BRITISH JOURNAL OF PHARMACOLOGY AND CHEMOTHERAPY**

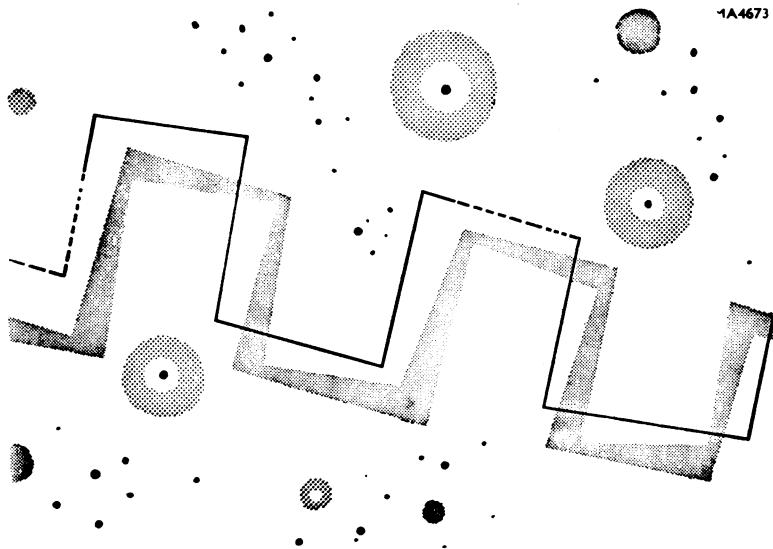
*Published quarterly. Subscription £4 4s. p.a.*

**OPHTHALMIC LITERATURE**

*Subscription £4 4s. p.a.*

*or combined with British Journal of Ophthalmology £9 p.a.*

## **BRITISH MEDICAL ASSOCIATION**



# 'Stemetil'

trade mark

brand

PROCHLORPERAZINE MALEATE

'Stemetil' is advocated for the prevention of attacks of migraine or to lessen their frequency or severity; for this purpose it is given continuously in a low dosage. It may also be used, in a higher dosage, at the prodromal stage, with a view to aborting the attack or relieving the symptoms. Choice of these two methods of use will depend on the frequency of the attacks. The drug is of prophylactic use in those cases wherein attacks of true migraine are induced by emotional upsets such as travelling or excitement. This is not to be confused with headache of psychogenic origin which is not true migraine and appears to be resistant to the drug. 'Stemetil' is also indicated in labyrinthine disorders including Ménière's syndrome, giddiness of other origins (except when due to streptomycin), and vomiting. Possible applications in psychiatry are being studied.

*Detailed information is available on request.*

**PRESENTATIONS:**

Tablets of 5 mg.      Suppositories of 25 mg.



**MANUFACTURED BY  
MAY & BAKER LTD**

**DISTRIBUTORS:**

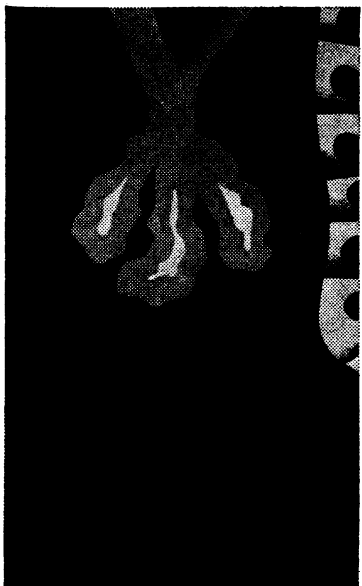
**PHARMACEUTICAL SPECIALITIES (MAY & BAKER) LTD · DAGENHAM**



# Geigy

**Dosulfin : a low dosage mixed sulphonamide, consisting of equal parts of sulphaproxyline and sulphamerazine**

**Dosulfin Syrup** has a rapid action against pneumonia and bacterial inflammatory conditions of the respiratory system. Because of its pleasant taste and low dosage children readily take this preparation.



## Dosulfin®

**Dosulfin Tablets** are an effective preparation for combating urinary tract diseases due to B. Coli and certain other organisms. The absorption and excretion of the two components occur independently.

### **Availability** Basic N.H.S. Prices

Tablets 0.75 g.	s. d.
Containers of 12	5 4
Containers of 100	36 6
Syrup (10% suspension)	
Bottles of 50 ml.	6 9
Graduated measure with each bottle	

**Geigy Pharmaceutical Company Ltd.**

**Wythenshawe, Manchester 23**

® means Registered Trade Mark

PH135b

---

# **"IMPROVED THERAPY FOR PEPTIC ULCER"**

---

**Extract from the American Journal of Gastroenterology (1957), 28, 439.**

"The medication investigated is known as Roter tablets . . . The dosage employed in the treatment of gastric or duodenal ulcer was 2 tablets, taken three times a day with tepid water immediately after meals . . . this therapy is applicable to ambulatory patients."

## **SUMMARY**

"In a series of 155 cases of peptic ulcer treated with . . . (Roter) tablets for three to six weeks, there was immediate relief of pain in 92 per cent of cases and roentgenological healing of the ulcer in 81 per cent. The average weight gain was 7.9 lbs. and occult blood disappeared from the stools in all of the six cases in which it was found.

"The benefit provided by the medication is attributed to the minute particulation of the bismuth subnitrate, produced by a special process of trituration in association with a synergistic antacid combination.

"The special features of this medication are immediate and prolonged relief of pain, correction of gastric hyperacidity, absence of side reactions, effectiveness for ambulatory patients, and early healing of the ulcer in most cases.

"There was no acid rebound in therapeutic dosage and no adverse effects were reported."

---



**ROTER**

**PACKINGS:** Tins of 40, 120, 640 and dispensing size 720  
(P.T. exempt). Basic N.H.S. price : 1/- for 10 tablets.

**ROTER may be prescribed on E.C.10 forms. Literature and samples on request.**

**F.A.I.R. LABORATORIES LTD. · TWICKENHAM · MIDDLESEX**

---

## On the road to recovery



CORRECT diet plays a most important part in restoring strength and energy during convalescence.

The patient requires foods which provide nourishment easily assimilated by a delicate digestion, and at the same time appeal to a capricious taste.

'Ovaltine', taken during the day and at bedtime, easily and effectively reinforces the diet in convalescence. This delicious food beverage is very palatable and readily digestible. Its contents of malt, milk, cocoa, soya, eggs and added vitamins help to build up vigour and vitality.

Your patients will enjoy 'Ovaltine' and benefit from its outstanding nutritional properties.

# OVALTINE

VITAMIN STANDARDIZATION PER OZ.

Vitamin B<sub>1</sub>, 0.3 mg.

Vitamin D, 350 i.u. Niacin, 2 mg.

M.402

A. WANDER LIMITED, 42 UPPER GROSVENOR STREET, GROSVENOR SQUARE, LONDON, W.1.

Manufactory, Farms and "Ovaltine" Research Laboratories: King's Langley, Herts.





*"...tastes good, too."*

**SYRUP**

Trade **'V-CIL-K'** Mark

**PAEDIATRIC**

An oral penicillin preparation for children needs to look good, taste good, and be effective. Syrup 'V-Cil-K' possesses all these attributes, and children delight in taking it.

Each 5 cc. of the prepared syrup contains 125 mg. 'V-Cil-K' brand Penicillin V Potassium, the most effective form of oral penicillin. It is available in bottles containing dry granules to make 30 cc. and 60 cc.

The average dose is  $\frac{1}{4}$  to 1 teaspoonful four times daily.

**SYRUP**  
**'V-CIL-K'**  
PENICILLIN V POTASSIUM

*Lilly*

ELI LILLY AND COMPANY LIMITED • BASINGSTOKE • ENGLAND

# Recent Titles from Butterworths

## **CANCER OF THE SKIN**

By JOHN C. BELISARIO, C.B.E., E.D., M.D., CH.M., D.D.M. Pp. xvi + 268 + Index. 217 illustrations, 8 photogravure colour plates.

By its clear discussion of diagnostic procedure and thorough yet concise description of therapeutics, this work points the way to earlier diagnosis, more specific treatment and thus to a lowering of mortality from cancer of the skin. The superb colour photographs, reproduced by photogravure, contribute much to the value and interest of the text.

## **CANCER OF THE PHARYNX, LARYNX AND OESOPHAGUS and its Surgical Treatment**

By RONALD W. RAVEN, O.B.E.(MIL.), T.D., F.R.C.S. Pp. viii + 292 + Index. 245 illustrations. 67s. 6d. net, by post 1s. 9d. extra.

The author of this new book writes from a wealth of personal experience. He deals exhaustively, not only with pathology and anatomy, but with pre cancerous conditions and the clinical picture, describing those operations which he had found valuable. The results of radiotherapy are fully reviewed, together with special anaesthetic considerations.

## **CLINICAL INVOLVEMENTS—Or the Old Firm**

By H. GARDINER-HILL, M.B.E., M.D., F.R.C.P. Pp. viii + 200. Illustrated. 32s. 6d. net, by post 1s. 6d. extra.

This is a collection of commentaries on case histories actually dictated after a ward round over a period of many years. Each case is intensely interesting and the author has not been afraid to show the lessons to be drawn from his own mistakes. The whole forms a complete exposition of the best way of obtaining the maximum helpful information from case histories.

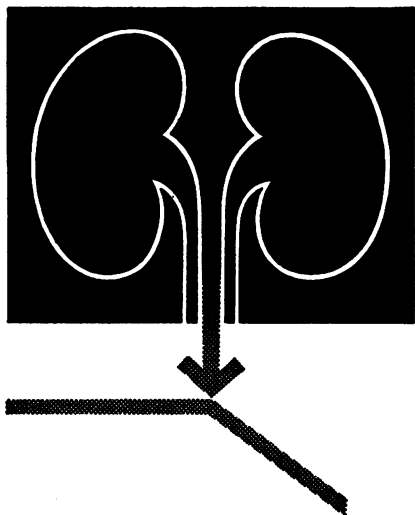
## **INDUSTRIAL HEALTH TECHNOLOGY**

By BRYAN HARVEY, M.A., M.SC., ASSOC.I.MECH.E., and ROBERT MURRAY, B.SC., M.B., CH.B., D.P.H., D.I.H. Pp. xiv + 319 + Index. 78 illustrations. 45s. net, by post 2s. extra.

For medical men working in industry and in industrial areas and for all concerned with factory management, this book provides a clear exposition of known problems in the field of industrial health and is a practical textbook indicating the best means of dealing with health hazards now and in the future.

**BUTTERWORTHS, 88 KINGSWAY, LONDON, W.C.2**

**Showroom: 11-12 BELL YARD, TEMPLE BAR, LONDON, W.C.2**



A new potent  
oral diuretic

# Esidrex

T.M.

**For oedema and hypertension**

The most potent diuretic.  
Well tolerated (non-mercurial).  
Suitable for all grades of oedema.  
Largely supersedes injections.  
Antihypertensive effect.

The dosage range of Esidrex is usually  
1-4 tablets (25 to 100 mg.) daily taken in  
2 doses, after breakfast and after lunch.

A card giving full details of precautions  
(which are as for chlorothiazide) and  
dosage, is available on request.

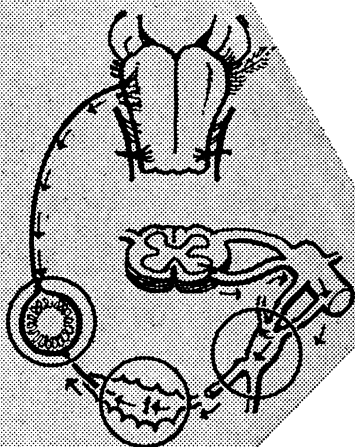
Tablets containing 25 mg. 6-chloro-7  
sulphamyl-3,4-dihydro-1,2,4-benzothia-  
diazine-1,1-dioxide in bottles of 25, 100  
and 500.

C I B A

Basic N.H.S. cost of treatment varies from 4d. to 1/- (+P.T.) per day



# *Effective and safe treatment of Peptic Ulcer*



## **Pro-Banthine**

BRAND OF PROPANTHELINE BROMIDE

Pro-Banthine is the standard anticholinergic drug which, in properly adjusted dosage, effectively suppresses gastric hypermotility, reduces the volume of gastric secretion and encourages healing of all types of peptic ulcer. By suppressing gastric motility a test dose will help to provide a clear X-ray picture for diagnosis.

### **ORALLY**

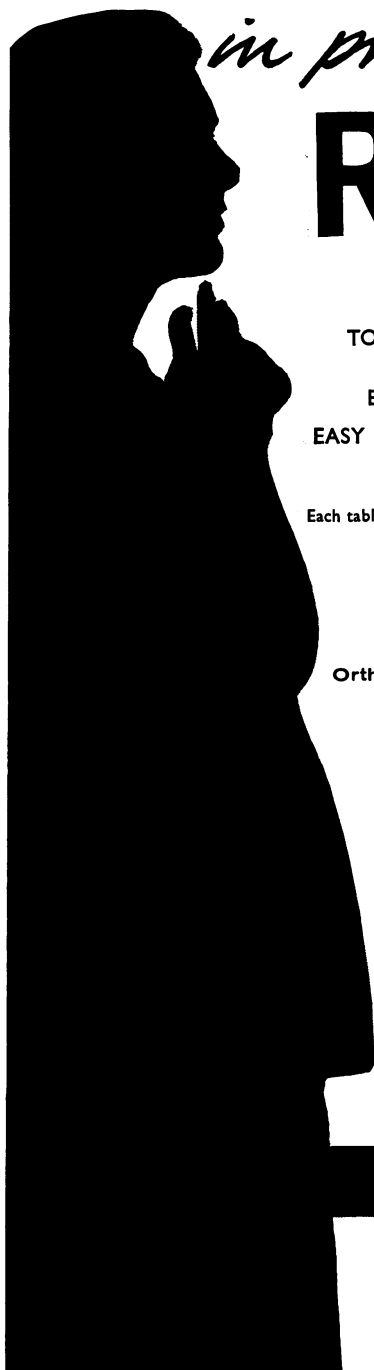
Both PRO-BANTHINE (15 mg.) and PRO-BANTHINE with Phenobarbitone (15 mg. of each) are available in sugar-coated tablets in bottles of 40, 100 and 1,000 tablets.

### **PARENTERALLY**

1 c.c. vials containing 30 mg. of PRO-BANTHINE as a dry, sterile powder for preparation of intramuscular or intravenous injections are available in boxes of 6 and 25 vials.

**SEARLE**

**HIGH WYCOMBE, BUCKS.**



*in pregnancy*

# Rarical

TRADE MARK

**iron-calcium tablets**

**TOLERATED** no stomach upset, constipation or diarrhoea, phosphate-free—no leg cramps

**EFFECTIVE** more hæmoglobin in less time

**EASY TO TAKE** white, uncoated, tasteless tablets may be swallowed, chewed, or crushed and suspended in fluids

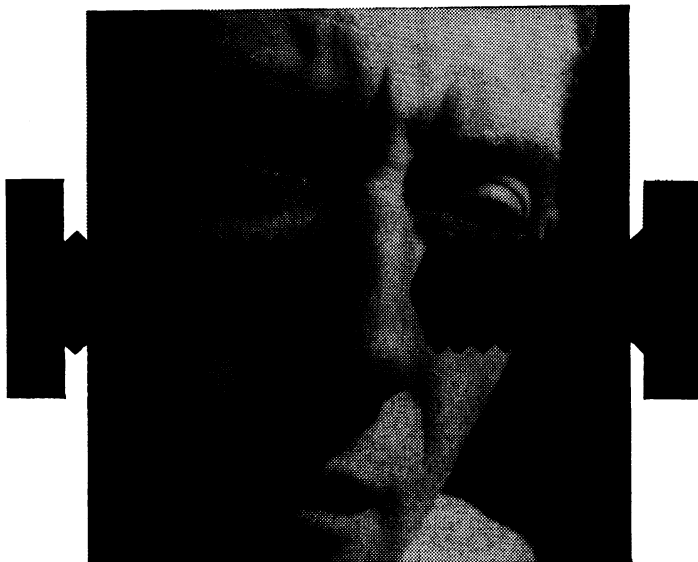
Each tablet provides: iron, 25 mg.; calcium, 85 mg.

LITERATURE ON REQUEST



**Ortho Pharmaceutical Limited**  
High Wycombe • England





## Nasal Congestion?

In Neophryn with antihistamine, the powerful vasoconstrictor Neophryn is combined with thenyldiamine hydrochloride, an antihistamine which also has a mild anaesthetic action and enhances the decongestive properties of Neophryn. For the relief of nasal congestion in the common cold, sinusitis and allergic or vasomotor rhinitis, Neophryn with antihistamine, relieves discomfort, encourages normal breathing and combats infection by draining congested passages.

# Neophryn

Trade Mark with antihistamine\*

## The general practice nasal decongestant

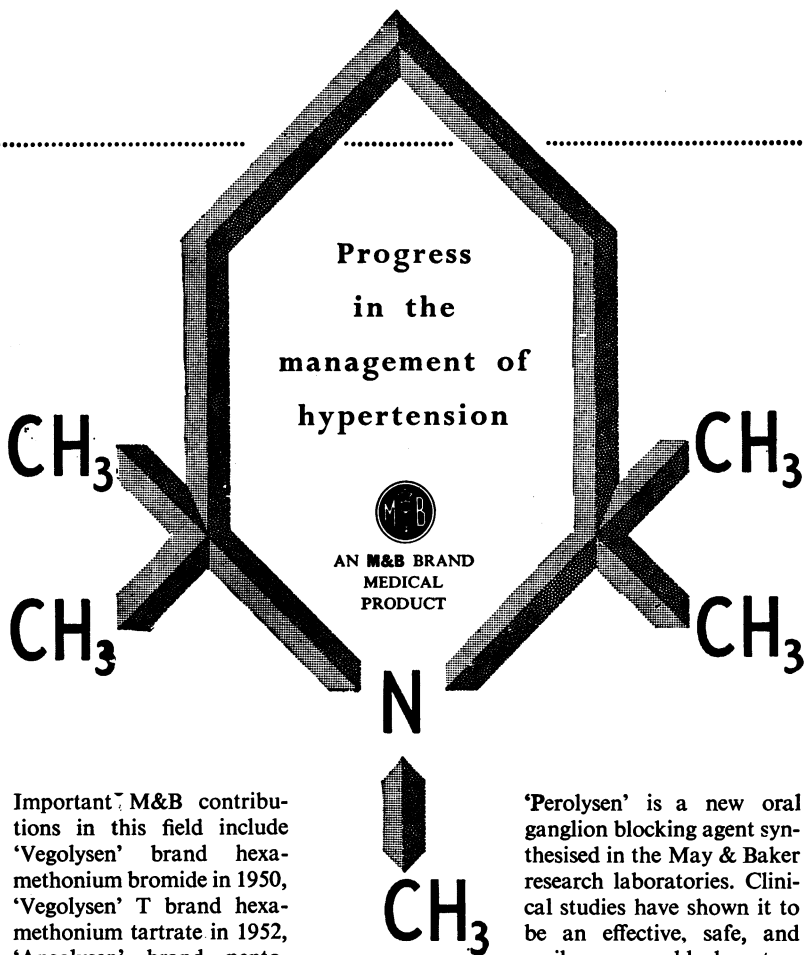
**\*0.5% Neophryn, 0.1% thenyldiamine hydrochloride**

Neophryn with antihistamine is available in precision engineered, plastic atomisers, giving a fine penetrating spray.

**Bayer Products Limited** Eden Street, Kingston-upon-Thames, Surrey.

Associated exporting company: **Winthrop Products Limited**

**B  
A  
Y  
E  
R**



Important M&B contributions in this field include 'Vegolysen' brand hexamethonium bromide in 1950, 'Vegolysen' T brand hexamethonium tartrate in 1952, 'Ansolysen' brand pentolinium tartrate in 1953, and now the latest addition—'Perolysen' brand pempidine tartrate.

'Perolysen' is a new oral ganglion blocking agent synthesised in the May & Baker research laboratories. Clinical studies have shown it to be an effective, safe, and easily manageable hypotensive drug.

'Perolysen' is presented as tablets of 1 mg., 5 mg. and 10 mg.

*The basic N.H.S. prices (excluding purchase tax) are:  
 25 x 5 mg. tablets 3s. 9d. and 25 x 10 mg. tablets 6s. 8d.*

*REFERENCE: "Pharmacology and clinical use of pempidine in the treatment of hypertension" Lancet (1958), ii, 6.*

**'PEROLYSEN'**

*trade mark*

PEMPIDINE TARTRATE

*brand*

MA5527

MANUFACTURED BY MAY & BAKER LTD.

DISTRIBUTORS: PHARMACEUTICAL SPECIALITIES (MAY & BAKER) LTD . DAGENHAM



**Time to remember**

**PERNIVIT**

TRADE MARK

**for chilblains**

Pernivit is effective in the treatment and subsequent prevention of chilblains.

Pernivit contains nicotinic acid and vitamin K, to *improve circulation, combat arterial spasm and maintain the integrity of the blood vessel walls.*

**DOSAGE**

**ADULTS:** two to six tablets daily immediately after meals

**CHILDREN:** half this dosage

**'PERNIVIT'  
tablets**

Bottles of 50 at 2/-; Bottles of 500 at 11/8  
Basic N.H.S. prices

*Literature and specimen packings are available on request.*

**THE BRITISH DRUG HOUSES LTD. (Medical Department) LONDON N.1**





# Ames

## ROUTINE URINE TESTS

—reliable, quick, no external heating—

A NEW COLOUR TEST

For **PROTEIN** \_\_\_\_\_ **\*ALBUSTIX**  
reagent strips

For **BLOOD** \_\_\_\_\_ **\*OCCULTEST**  
reagent tablets

For **GLUCOSE** \_\_\_\_\_ **\*CLINISTIX**  
reagent strips

For **BILIRUBIN** \_\_\_\_\_ **\*ICTOTEST**  
reagent tablets

For **KETONES** \_\_\_\_\_ **\*ACETEST**  
reagent tablets

... and, of course, for reliable estimation of  
**SUGAR** \_\_\_\_\_ **\*CLINITEST**  
reagent tablets

Range of six simplified urine tests for General Practitioners, hospitals, clinics and laboratories.

Please write for illustrated leaflet and references.

\*Acetest\* and \*Clinitest\* are available under the N.H.S. on form E.C.10.

(See drug tariff)

\*Trade Marks



**AMES COMPANY (LONDON) LTD**

NUFFIELD HOUSE, PICCADILLY, LONDON, W.1 Telephone: REGent 5321

Over

400

PUBLISHED PAPERS

confirm the

SAFETY

of

‘Gantrisin’

(SULPHAFURAZOLE)

Prescribers know  
where they are  
with ‘GANTRISIN’

ROCHE PRODUCTS LTD., 15 MANCHESTER SQUARE, LONDON, W.1

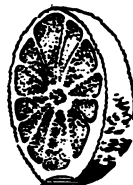
**Minadex gives her iron**

**Minadex gives her vitamins A and D**

**Minadex gives her glycerophosphates**



**That's why  
Minadex gives her  
a brighter outlook  
after illness**



# MINADEX

ORANGE FLAVOUR

**The vitamin-mineral orange flavoured tonic**

in 50ml & 125ml bottles



GLAXO LABORATORIES LTD., GREENFORD, MIDDLESEX BY Rm 3434

Minadex is a registered trademark



# Announcing...!

A **RIKER**

PRODUCT OF CONSIDERABLE VALUE  
IN GENERAL PRACTICE

# 'Deaner'

Trade Mark

## EARLY REPORTS SHOW THAT 'DEANER' MAY

- Improve outlook
- Increase appetite
- Produce sounder sleep
- Produce increased drive and energy

'Deaner' is a new biochemical corrective which acts gradually and with a prolonged effect. All evidence indicates that 'Deaner' produces its effect through acting as a precursor of brain acetylcholine.

### INDICATIONS —

**General Debility.** Where patients complain of lack of energy and appetite, who are unable to concentrate and who seem to derive no benefit from sleep.

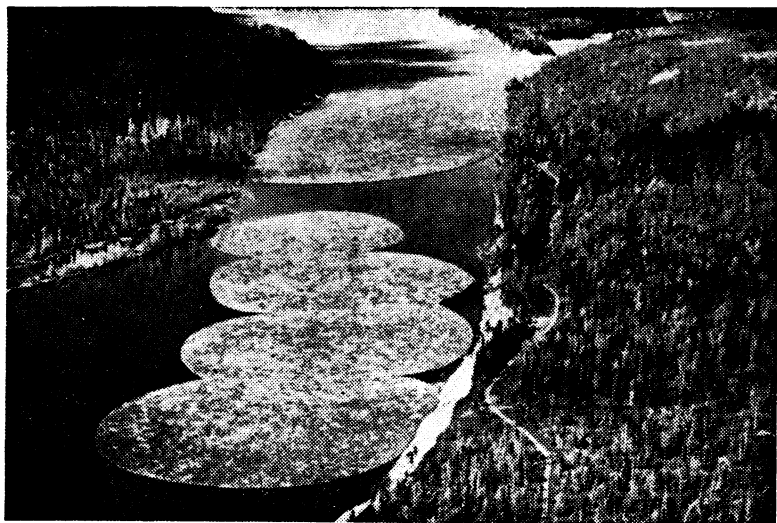
**Headache.** 'Deaner' can produce gratifying results in chronic and migraine headaches.

**Availability.** Tablets containing 25 mg. dimethylaminoethanol (deanol) as para-acetamido benzoic acid salt. Bottles of 100 and 500 (basic N.H.S. costs 22/- and 90/- respectively plus P.T.). Weekly cost of treatment is approximately 2/6 plus P.T.

**Dose.** Two tablets per day for two to three weeks, subsequently increased if necessary. The usual dose will often be one tablet three times a day.

**N.B.** 'Deaner' requires at least two weeks for its full effect to develop. No assessment should be made until this time has elapsed.

**RIKER LABORATORIES LIMITED**  
LOUGHBOROUGH • LEICS.



Circular booms or "sacks" each consisting of about 25,000 logs, on the Gatineau River, Quebec, one of Canada's richest sources of pulp wood.

(Photograph by courtesy of the National Film Board of Canada.)

*—but when blood vessels are occluded . . .*

## **ANTICOAGULANT THERAPY**

**with**

**\* PULARIN** (heparin-Evans) available in a  
**G.P. EMERGENCY PACK OF 12500 I.U.**

**and**

**\* DINDEVAN** (phenindione-Evans) tablets (10 mg. and 50 mg.)

*A copy of the brochure 'Essentials of Anticoagulant Therapy'  
will be sent by Medical Information Department on request.*

\* TRADE MARK



**EVANS MEDICAL SUPPLIES LTD**  
**LIVERPOOL AND LONDON**

**THE  
FLORENCE NIGHTINGALE HOSPITAL  
for Gentlewomen  
19 Lisson Grove, London, N.W.1**

*Telephone: Paddington 2341*

---

**FOR EDUCATED WOMEN OF LIMITED MEANS AND  
THOSE OF THE PROFESSIONAL CLASSES**

---

NEITHER CONTROLLED NOR SUPPORTED BY THE  
STATE, THIS HOSPITAL offers EVERY FACILITY to  
PHYSICIANS and SURGEONS, with private accommodation  
for their patients, at a cost of 8 or 11 guineas for a private  
room; 4 guineas for cubicle.

For further particulars apply to the Secretary.

**THE GENERAL PRACTITIONER'S  
GUIDE  
TO THE TREATMENT OF THE  
CHRONIC RHEUMATIC DISEASES**

*by*

**H. WARREN CROWE, D.M., B.CH., (Oxon) M.R.C.S., L.R.C.P.**  
*Consulting Physician to the Charterhouse Rheumatism Clinic*

---

AVAILABLE FROM

**REYNOLDS & BRANSON LTD.,  
NORTH WEST ROAD, LEEDS 6**

**PRICE 3/6 - 4/1 POST PAID**

THE WORLD'S GREATEST BOOKSHOP

**FOYLES**  
★ ★ FOR BOOKS ★ ★

6 That's what I call quick service—I telephoned  
Foyles at 10 a.m. and the book (although it was  
out-of-print) reached me by the next morning's  
post. 9 — *A Customer's Letter*

**FOYLES TRAVEL BUREAU**

Road, Rail, Sea and Air Travel. Tickets  
for all Theatres and Sports Events. Holiday  
Tours and Cruises.

**119-125 CHARING CROSS ROAD, LONDON W.C.2**

*Gerrard 5660 (20 lines)*



*Open 9—6 (including Saturdays)*

**Nearest Station : Tottenham Court Road**

**FILM SURVEY**

**Please return to—Dr W. A. Bullen, College of General Practitioners,  
41 Cadogan Gardens, London, S.W.3.**

Name of member or associate.....

Address.....

Name of film seen.....

(Name of maker or sponsor, if known).....

Date of film show.....

Approximate number in audience.....

Type of practitioner forming bulk of audience.....

(specialist or general practitioner)

General reaction to the film.....

Personal reaction to the film.....

Name of organizers of film show.....

Do you like medical films in general?.....

Remarks .....

.....  
.....  
.....  
.....

# The esters of NICOTINIC, SALICYLIC and p-AMINO BENZOIC acids bring relief to cases of arthritis and rheumatism

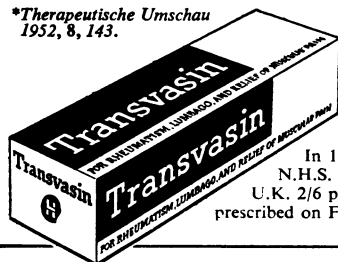
IN CASES of soft-tissue rheumatism, and arthritic disorders, many doctors are tending more and more to regard Transvasin as an indispensable adjuvant to treatment.

For Transvasin is composed of the esters of nicotinic, salicylic and p-aminobenzoic acids. These esters readily pass the skin barrier in therapeutic quantities, and so enable an effective concentration of drugs to be built up where they are needed.\*

Transvasin not only induces vasodilation of the skin with a superficial erythema, but also brings about a deep hyperaemia of the underlying tissues. It is non-irritant and can be safely used on delicate skins.

It is now being widely prescribed, with successful clinical results. Since a very small quantity is sufficient for each application, the cost of treatment is extremely low.

\**Therapeutische Umschau*  
1952, 8, 143.



In 1 oz. tubes, basic  
N.H.S. price in the  
U.K. 2/6 plus P.T. May be  
prescribed on Form E.C.10.

Tetrahydrofurfuryl salicylate.....	14%
Ethyl nicotinate.....	2%
n-Hexyl nicotinate.....	2%
Ethyl p-aminobenzoate.....	2%
Water-miscible cream base ad.....	100%



"Thank you, doctor"

## LLOYD-HAMOL LTD

11 WATERLOO PLACE, LONDON, S.W.1. TELEPHONE WHITEHALL 8654/5/6

*Transvasin is the registered trade mark of Lloyd-Hamol Ltd.*

**THE COLLEGE OF GENERAL PRACTITIONERS**  
**41 Cadogan Gardens, London, S.W.3**

**Associateship**

Any registered (or provisionally registered) medical practitioner is eligible for admission as an associate, provided he gives an undertaking that if he enters or remains in general practice he will continue approved postgraduate study and will uphold and promote the aims of the College to the best of his ability.

(A provisionally registered medical practitioner shall cease to be an associate if he fails to obtain registration within two years of qualification.)

**Membership**

The Council of the College admits to membership, after consultation with the Board of Censors, registered medical practitioners who have been qualified for not less than seven years and have been engaged in general practice for not less than five years or, as an associate, for three years.

An applicant for membership must :— (1) be proposed and seconded by two members of the College—not being in partnership with each other. (2) Submit evidence concerning his practice, experience, and academic and administrative achievements. (3) Submit himself to an interview with the board of censors, if required. (4) Give an undertaking that he will continue approved postgraduate study while he remains in active general practice, and that he will uphold and promote the aims of the College to the best of his ability. The Council may seek supporting evidence of his eligibility from his sponsors, the board of the faculty in whose area he resides, and, if so required, from others whom he or his sponsors may choose to appoint.

**Entrance Fees and Subscriptions**

Associates make an annual subscription of £2 2s. 0d. but pay no entrance fee. Members are required to pay an entrance fee on admission of £10 10s. 0d. and make an annual subscription of £3 3s. 0d. (After June 1959—£5 5s. 0d.).

Forms of application for admission to associateship and membership may be obtained from The Secretary, The College of General Practitioners, 41 Cadogan Gardens, London, S.W.3. 'Phone Sloane 8333.

**THE COLLEGE OF GENERAL PRACTITIONERS**  
**41 Cadogan Gardens, London, S.W.3**

**Associateship**

Any registered (or provisionally registered) medical practitioner is eligible for admission as an associate, provided he gives an undertaking that if he enters or remains in general practice he will continue approved postgraduate study and will uphold and promote the aims of the College to the best of his ability.

(A provisionally registered medical practitioner shall cease to be an associate if he fails to obtain registration within two years of qualification.)

**Membership**

The Council of the College admits to membership, after consultation with the Board of Censors, registered medical practitioners who have been qualified for not less than seven years and have been engaged in general practice for not less than five years or, as an associate, for three years.

An applicant for membership must :— (1) be proposed and seconded by two members of the College—not being in partnership with each other. (2) Submit evidence concerning his practice, experience, and academic and administrative achievements. (3) Submit himself to an interview with the board of censors, if required. (4) Give an undertaking that he will continue approved postgraduate study while he remains in active general practice, and that he will uphold and promote the aims of the College to the best of his ability. The Council may seek supporting evidence of his eligibility from his sponsors, the board of the faculty in whose area he resides, and, if so required, from others whom he or his sponsors may choose to appoint.

**Entrance Fees and Subscriptions**

Associates make an annual subscription of £2 2s. 0d. but pay no entrance fee. Members are required to pay an entrance fee on admission of £10 10s. 0d. and make an annual subscription of £3 3s. 0d. (After June 1959—£5 5s. 0d.).

Forms of application for admission to associateship and membership may be obtained from The Secretary, The College of General Practitioners, 41 Cadogan Gardens, London, S.W.3. 'Phone Sloane 8333.