



**Tanderil<sup>®</sup>  
Geigy**

**Helps  
arthritic  
joints  
to move  
again  
without  
pain**

*4 major  
benefits of Tanderil  
antirheumatic therapy*

*Intense Analgesic activity*

*Significant reduction of  
morning stiffness*

*Improved joint mobility*

*Reduced joint swelling*

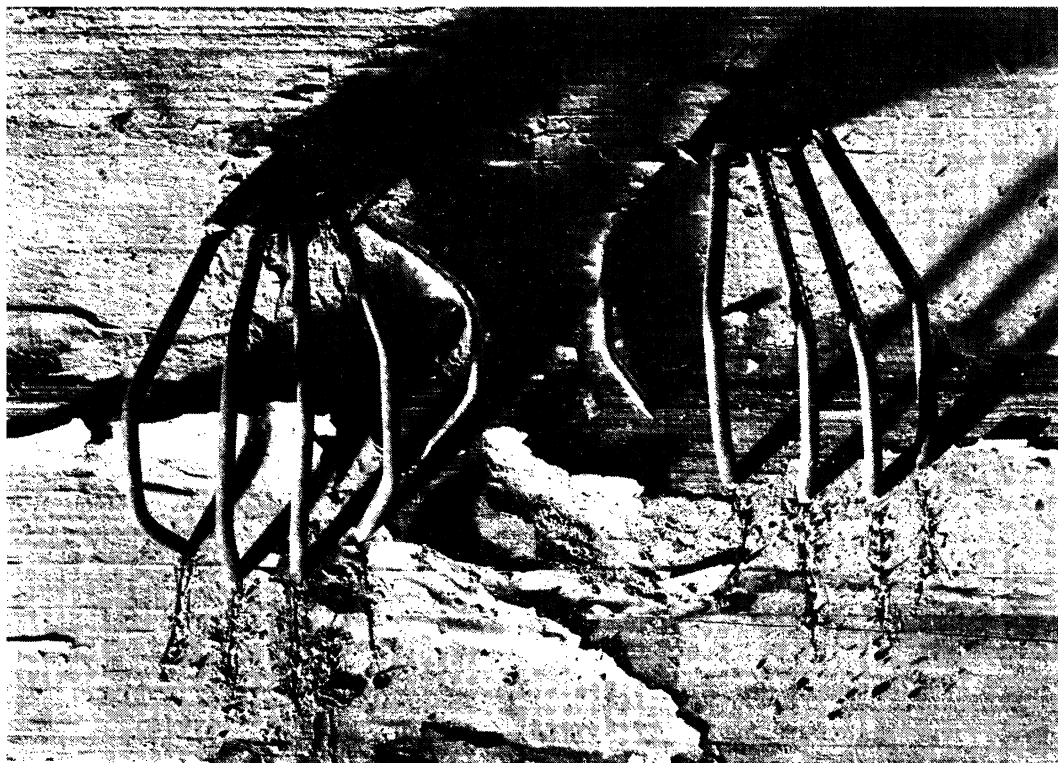
**Availability**

Tanderil is available as coffee-  
coloured, sugar-coated tablets  
containing 100 mg. and as  
suppositories containing 250 mg.  
4-butyl-2-(4-hydroxyphenyl)-  
phenylpyrazolidine-3,5-dione  
monohydrate (Oxyphenbutazone  
B.P.)

*Detailed literature describing any  
product will be supplied on request*

**Geigy Pharmaceuticals,  
Hurdsfield Industrial Estate  
Macclesfield Cheshire**

Instead of just scratching the surface of the irritation problem



# Vallergan – orally

Antipruritic

'Vallergan' reduces the itch in dermatitis and eczema.

Antihistaminic

'Vallergan' reduces reaction and irritation in urticaria and other allergic skin conditions.

Sedative

'Vallergan' reduces sleep loss by virtue of a potent sedative action, ideal for the restless patient.

Full information is available on request

'Vallergan' is a trade mark for preparations of trimeprazine tartrate manufactured by May & Baker Ltd Dagenham Essex RM10 7XS

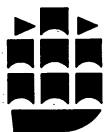


**M&B**

**May & Baker**



MA 9185



# CHURCHILL LIVINGSTONE

## TEXTBOOK OF MEDICAL TREATMENT

Edited by STANLEY ALSTEAD, ALASTAIR MACGREGOR and RONALD H. GIRDWOOD  
1971 Twelfth Edition 708 pages 36 illustrations. £4.25

'The reason for its popularity is not far to seek. It is written by clinicians and carefully edited so that the emphasis throughout is on what the man in practice requires. Its aim is to provide the clinician—whether consultant or general practitioner—with a sound, reliable and up-to-date account of methods of treatment which have proved of value'.—*Practitioner*.

## CLINICAL GYNAECOLOGY

WALLACE BARR

1971 260 pages 141 illustrations £3.00

*Clinical Gynaecology* is a guide for those who wish to learn the practice of clinical gynaecology. Emphasis is given to diagnosis, and to the increasing trend in gynaecology which stresses the importance of medical management in preference to the surgical approach which has hitherto been dominant. Chapters on Anatomy, Physiology and Development, while valuable for reference, have been relegated to the end of the book. Within recent years the advent of laparoscopy and of Sonar have done much to banish the guesswork from gynaecology. These new techniques are described and their use is incorporated in the text.

## PHYSIOLOGY FOR PRACTITIONERS

IAN C. RODDIE

1971 208 pages £1.50

'One could hardly expect the physiology of every clinical trick to be explained, but the field covered is very wide. A few of the topics included, mentioned to whet one's appetite, are the renin-angiotensin theory, the capacity function (as distinct from the transport function) of the venous system, synaptic transmission, brown fat, posture control, energy balance failure, how skeletal muscles are organized and why arterioles offer more resistance than capillaries. Endocrinology and the regulation of reproduction receive full consideration also'.—*Practitioner*.

## RADIOLOGY FOR GENERAL PRACTITIONERS AND MEDICAL STUDENTS

DAVID SUTTON

1971 Second Edition 110 pages 82 illustrations £1.25

'All the more common investigations are clearly displayed and described and the more difficult procedures made to appear not so desperate as is often imagined. The pictures are excellent. This small volume should prove invaluable, and find an honoured place on the doctor's book-shelf'.—*Journal of the Royal College of General Practitioners*.

## CALLING THE LABORATORY

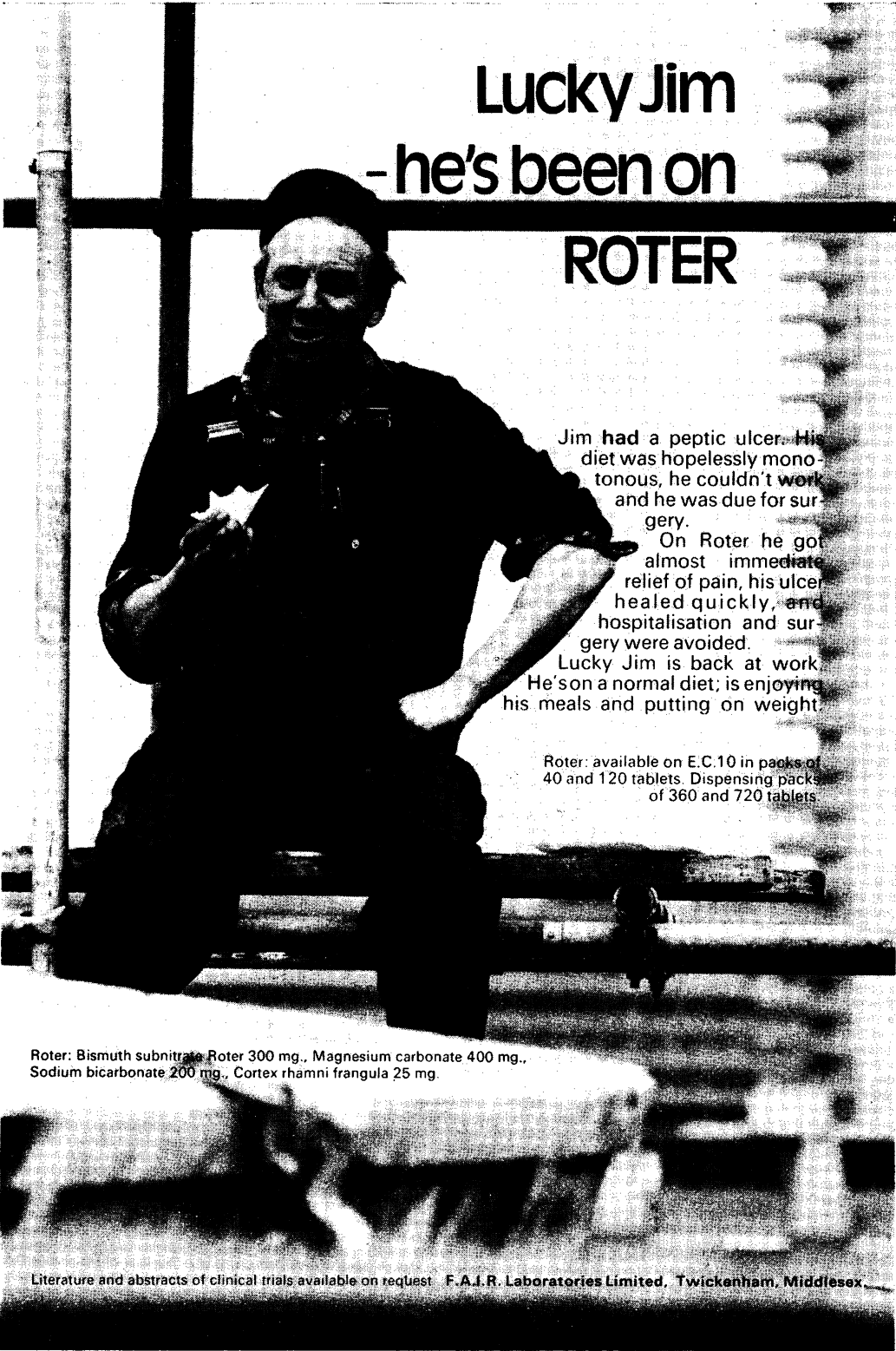
Edited by W. A. R. THOMSON

1971 Third Edition 160 pages 6 illustrations £1.50

'*Calling the Laboratory* embodies a series of articles which appeared in *The Practitioner* on the laboratory investigation of clinical material. The main object of these articles is to show how the laboratory can be of service. There is also due emphasis on proper methods of obtaining specimens. The range covered is wide, including tests for pregnancy, infertility, and alcoholic intoxication as well as methods used in bacteriology, haematology, and chemical pathology'.—*British Medical Journal*.

# CHURCHILL LIVINGSTONE

Teviot Place Edinburgh



# Lucky Jim - he's been on ROTER

Jim had a peptic ulcer. His diet was hopelessly monotonous, he couldn't work and he was due for surgery.

On Roter he got almost immediate relief of pain, his ulcer healed quickly, and hospitalisation and surgery were avoided.

Lucky Jim is back at work. He's on a normal diet; is enjoying his meals and putting on weight.

Roter: available on E.C.10 in packs of 40 and 120 tablets. Dispensing packs of 360 and 720 tablets.

Roter: Bismuth subnitrate Roter 300 mg., Magnesium carbonate 400 mg., Sodium bicarbonate 200 mg., Cortex rhamni frangula 25 mg.

Literature and abstracts of clinical trials available on request F.A.I.R. Laboratories Limited, Twickenham, Middlesex.

**The anxious patient  
is so often a  
depressed patient.**

**Is a tranquilliser the best therapy?**



**for depression with overlying anxiety**

**Tryptizol<sup>®</sup>** **MSD**  
Amitriptyline hydrochloride/MSD

Supplied as tablets containing 10 mg, 25 mg, and 50 mg amitriptyline hydrochloride/MSD, as a syrup, and as an injection.

Detailed information is available to physicians on request

<sup>®</sup> denotes registered trademark.

Merck Sharp & Dohme Limited, Hoddesdon, Hertfordshire  
Telephone Hoddesdon 67123

I-2306

# **ARE NOT TWO CHILDREN ENOUGH?**

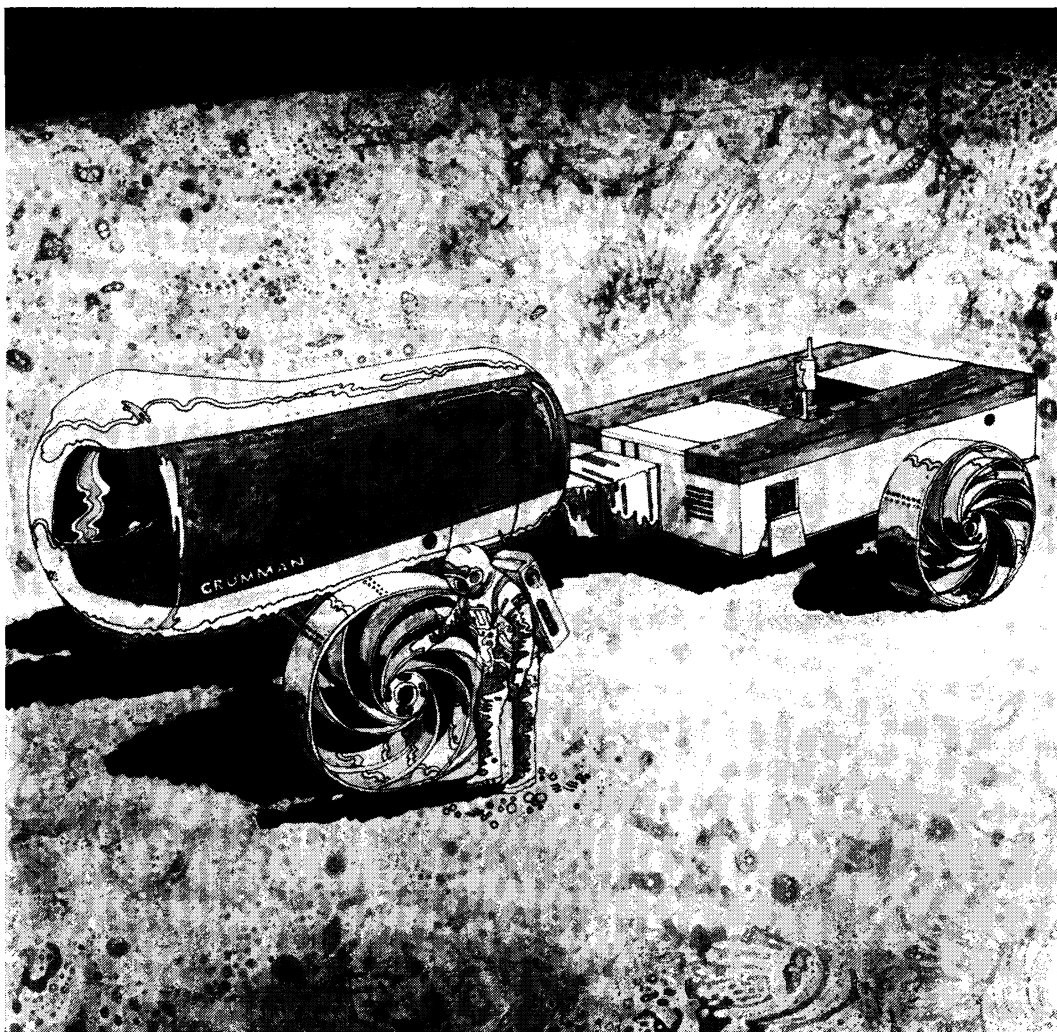
No doubt you are already referring suitable candidates for **VASECTOMY**.

Would you find a leaflet describing the operation helpful to put in your waiting room or to hand to interested couples?

If so, may we send you some? There is no charge for these.

Please send requests to:

The Hon. Director,  
Crediton Project,  
West Longsight,  
Crediton, Devon.



## Actifed and Space age Medicine

The lunar exploratory vehicle shown above was designed to cope with a rugged and unfriendly terrain. A smaller vehicle than the one depicted – used for carrying an unmanned radio-controlled instrument – has already been adapted to provide a highly versatile carriage for the disabled.

In the space programme, medical benefit has been a two-way exchange. Of the medicines taken on Apollo flights, ACTIFED\* has been repeatedly chosen as the decongestant. ACTIFED TABLETS and SYRUP contain the decongestant pseudoephedrine and the established antihistamine triprolidine. ACTIFED COMPOUND LINCTUS contains, in addition, codeine. It provides effective and palatable cough control for all age groups.

Full information is available on request.

Burroughs Wellcome & Co. (The Wellcome Foundation Ltd.) Dartford, Kent, DA1 5AH

\*Trade Mark



For Coughs with Congestion

# ACTIFED COMPOUND LINCTUS



# The need for Septrin is



## frequent, urgent and burning

### **Superior to ampicillin or sulphadimidine**

In a comparative trial,<sup>1</sup> cure rates achieved in urinary tract infections were 85% with SEPTRIN\*, 70% with ampicillin and 40% with sulphadimidine. SEPTRIN was judged "clearly superior to either of the other treatments".<sup>2</sup>

(Cure criterion = eradication of infecting organism 1 week after end of treatment).

#### REFERENCES

1. *Brit med J*, (1969), 1, 541.
2. Leading Article, *Brit med J*, (1969), 1, 525.
3. *Med J Austr*, (1971), 1, 526.
4. Symposium: The Synergy of Trimethoprim and the Sulphonamides. *S Afr med J* (1970), 44, Supplement (August) 12.

### **High success rate**

"... one is struck by the tremendous success rate, certainly superior to any other antibacterial we have tested..."<sup>3</sup>

"Of the easily administered primary treatments for urinary tract infection, this combination is probably the best."<sup>4</sup>

\*Trade Mark

SEPTRIN Tablets, Adult Suspension, Paediatric Suspension, and Paediatric Tablets contain trimethoprim and sulphamethoxazole. Full information is available on request.



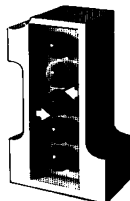
Wellcome

Burroughs Wellcome & Co.  
(The Wellcome Foundation Ltd.)

Dartford, Kent, DA1 5AH



# SEPTRIN



**First in Urinary Infections**  
double blockade of bacterial metabolism  
means resistance is unlikely to develop



'... elderly people select for themselves a diet relatively poor in potassium content even in circumstances where an adequate intake is available.'

*Geront. clin. (Basel)* 1971, 13, 119 (May/Jun)

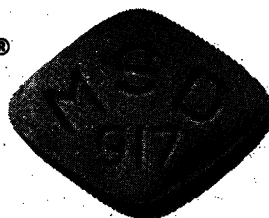
'Digitalis overdose is very common especially in the elderly.'

'...[The most common causes] today are simple overdose, impaired renal function and depletion of the body potassium.'

*Brit. J. Hosp. Med.*, 1971, 6, 93 (Jul)

**so now—**

# MODURETIC® DIURETIC



a highly effective diuretic that entirely obviates the need for potassium supplements

---

◆ 'Moduretic' is a new diuretic from Merck Sharp & Dohme—highly effective, yet helps to conserve the body's natural balance of potassium

---

◆ With 'Moduretic', dosage is simplified

---

◆ 'Moduretic' Tablets are small, distinctively diamond-shaped, and peach-coloured

---

'Moduretic' is available as tablets containing 5 mg amiloride hydrochloride and 50 mg hydrochlorothiazide.  
Detailed information is available to physicians on request.  
® denotes registered trademark.



Merck Sharp & Dohme Limited, Hoddesdon, Hertfordshire Telephone Hoddesdon 67123

# New assisted passage scheme

The formula which really assists and maintains free mucus flow in bronchial conditions—that is new **LINCTIFED\* EXPECTORANT**.

**LINCTIFED EXPECTORANT:**  
loosens thick tenacious sputum;  
decreases mucosal congestion;  
controls irritating, unproductive  
cough.

\*Trade mark

Available in two forms—

**LINCTIFED EXPECTORANT** and  
**LINCTIFED EXPECTORANT PAEDIATRIC**  
containing guaiphenesin, pseudoephedrine,  
triprolidine and codeine in a balanced  
formulation. **LINCTIFED EXPECTORANT**  
controls cough and clears the way for  
easier breathing.

Full information available on request.

## **LINCTIFED EXPECTORANT** **LINCTIFED EXPECTORANT PAEDIATRIC**



Burroughs Wellcome & Co. (The Wellcome Foundation Ltd.) Dartford, Kent

**When the  
mind magnifies...**



**Restores emotional stability**  
**effective in the majority of all cases of anxiety**

"Improvement on the Anxiety Rating Scale was seen in 95% of patients scored at the end of 2 weeks."<sup>2</sup>

**Enhances mood**  
**relieves any depressive overlay**

"It was found to normalize anxious mood and effected a valuable restoration of perspective in the patient's attitude towards worries and fearful apprehensions."<sup>3</sup>

"It is noteworthy that among the 35 patients to whom no previous treatment had been given immediately before the trial, only six failures occurred, the remainder responding very well to treatment, including some patients with a depressed mood overlying the anxiety neurosis."<sup>2</sup>

**Rapid action**  
**fast clinical response**

"... at the end of the first week with oxypertine, 6% had been completely relieved of symptoms, and 42% partially relieved... At the end of the fourth week there were now 35% completely relieved with oxypertine[Integrin] and 43% partially relieved..."<sup>4</sup>

**Causes less drowsiness**  
**less effect on reaction time**

In reaction time tests, patients treated with Integrin showed more rapid response to stimuli and less incoordination than with diazepam.<sup>1</sup> Other investigators commenting on the low incidence of drowsiness with Integrin agree that when drowsiness does occur it can be relieved by adjustment of dosage with little reduction in therapeutic effectiveness.<sup>2,3</sup>

**"Significantly superior to diazepam"<sup>1</sup>**

**INTEGRIN**  
**capsule 10mg**

**the 'fundamental' treatment for anxiety**

**...Integrin restores  
perspective**



unlike other tranquillizers

**INTEGRIN**  
capsule 10mg

**combats the basic biochemical  
disturbance associated with anxiety**

**Refs.**

- 1 Curr. Therap. Res. (1971) 13:561
- 2 Med. Digest (1971) 16:472
- 3 Clin. Trials J. (1971) 8:3
- 4 Practitioner (1971) 206:822

**Indications**

Acute and chronic anxiety states and psychosomatic conditions whether or not accompanied by depressive overlay; tension, apprehension, agitation and sleep disturbances.

**Dosage**

The usual adult dose is one 10mg capsule three times daily, with a further capsule at bedtime if required. In certain cases up to 60mg daily may be needed. Should a milder effect be required the midday dose may be omitted.

**Side Effects**

Even in high doses, Integrin is well tolerated, with only minor, often transient, side effects. Some patients may experience some drowsiness. Dry mouth and dizziness have also been reported.

**Precautions**

Alcohol or other tranquillizers may potentiate the effect of Integrin and patients intending to drive should be made aware of this. Where MAO inhibitors have been used, 2-3 weeks should elapse before Integrin is started.

**Safety Margins**

No substantiated reports of toxicity have been received, even where patients have taken up to the equivalent of 56 capsules in 24 hours. Neither dependence nor withdrawal symptoms have been reported.

**Presentation**

Containers of 100 capsules. Each grey/green capsule contains 10mg oxyperline.

**Basic NHS Cost**

One week's treatment (1 capsule 10mg t.d.s.) is 36p

Integrin is a registered trade mark.

Full information is available from

Winthrop Laboratories, Surbiton-upon-Thames, Surrey.

a product of **WINTHROP** research

# WRIGHTS

## SUDDEN AND UNEXPECTED DEATHS IN INFANCY (COT DEATHS)

F. E. CAMPS and  
R. G. CARPENTER  
144 pp. 24 illus. Paper Covers.  
January 1972 £2.00

## COMPUTERS IN MEDICINE

J. ROSE  
172 pp. 33 illus.  
March 1972 £3.00

## THE MEDICAL ANNUAL 1971

Edited by  
SIR RONALD BODLEY SCOTT  
and R. MILNES WALKER  
578 pp. 102 illus. £4.50

## THE CHILD: A TEXTBOOK FOR THE PAEDIATRIC TEAM

J. RENDLE-SHORT  
200 pp. 2 illus. Paper Covers. £2.25

**JOHN WRIGHT & SONS LIMITED**

Bristol, England BS8 1EX

University of Bristol  
Departments of Mental Health and  
Extra-Mural Studies

## PSYCHOTHERAPY WORKSHOP

25th June—1st July, 1972

This workshop is intended for those mental health professionals and general practitioners who have a few years' experience, and now seek further training and insight into the processes of psychotherapy. £32.00 resident membership.

Further particulars and application forms from: The Assistant Director, Department of Extra-Mural Studies, University of Bristol, 32 Tyndall's Park Road, Bristol BS8 1HR.

ASSISTANT/possible partnership, for single handed practice in Pennine Village. For further details telephone Marsden 332.

## KING GEORGE HOSPITAL Ilford, Essex

**VOCATIONAL TRAINING SCHEME FOR GENERAL PRACTICE.** Applications are invited for the post of Trainee General Practitioner in the Ilford & District Group of Hospitals and a Health Centre Teaching Practice.

The course has been recognised by the Royal College of General Practitioners and on completion trainees will be eligible to sit the membership examination of that College.

The appointment is for three years and is intended for doctors who have completed their pre-registration training.

On completion they will be entitled to the Vocational Training Allowance.

The appointment (on 1 June, 1972) will take the form of six months rotating posts in Paediatrics and General Medicine, Obstetrics & Gynaecology, Accident & Emergency in the New King George Accident Department associated with experience in the Special Departments of Ophthalmology, Ear, Nose and Throat, and Dermatology, Psychiatry & Geriatrics.

Trainees will be eligible to sit the D.Obst.R.C.O.G.

The final year will be in a Teaching General Practice.

Education in the organisation and practice of Family Medicine will be available throughout the three years, and appropriate day release will be arranged including the Course at the Royal College of General Practitioners.

Applications to The Group Secretary by Monday, 20 March (Interview Thursday, 6 April, 1972).

## ST. BARTHOLOMEW'S HOSPITAL MEDICAL COLLEGE [University of London]

### VOCATIONAL TRAINING SCHEME FOR GENERAL PRACTICE

A three-year Vocational Training Scheme for General Practice is to be introduced in July 1972 by St Bartholomew's Hospital Medical College in conjunction with the Chelmsford Hospital Group. The scheme is recognised by the Royal College of General Practitioners as suitable preparation for the M.R.C.G.P. Examination and will consist of two years of suitable hospital appointments at Senior House Officer level at St. Bartholomew's and Chelmsford, and a third year as a trainee in General Practice.

Application forms and further details may be obtained from the Postgraduate Assistant Dean, St. Bartholomew's Hospital Medical College, West Smithfield, London, EC1A 7BE. (Tel. 01—606—7404). Completed application forms should reach the Dean of the College not later than April 15th, 1972.

**Now you can prescribe aspirin  
LONG-TERM  
in rheumatoid arthritis**

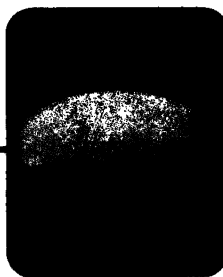
**Levius**

Each tablet contains 35,000 microgranules of aspirin individually protected by a coating of inert ethylcellulose

*Magnification x 15*

The ethylcellulose coating is designed to protect the gastric mucosa against the irritant action of aspirin without reducing the effectiveness of the drug. Aspirin is released through the coating of the microgranules at a controlled rate enabling relief of pain to be prolonged.

**long-term aspirin**



**Levius**

*Microcapsules magnified 250 times,  
The coating can be clearly seen*

Levius:  
each tablet contains 500mg. of acetylsalicylic acid  
in micro-encapsulated form.

Levius: registered trade mark

Full information and samples on request



Parmitalia (UK) Limited, Kingmaker House, Barnet, Herts. Telephone: 01-440 7171