

Correspondence

Hippocratic plane tree

Sir,

As I was recently on the island of Cos and heard at first hand of the proposals for the new International Hippocratic Foundation there, I was particularly interested to see the account in your *Journal* of this venture.

Particularly I should like to congratulate the College on its initiative in sponsoring the Foundation by selling seedlings from Hippocrates' plane tree which, I was assured by the island's senior guide, is the original tree. The reasons he gives are that Hippocrates himself planted the tree at a depth of three metres (12 feet) and that at the time, the tree was surrounded by very tall buildings which protected it from the winds and the weather so that it was able to grow to its present size and age!

Interestingly, there are smaller trees around it

and my photograph below shows the most promising of these so that it seems likely that there will be a plane tree here for at least the next 500 years.

While writing I thought your readers might like to see what the middle terrace at the Aesculapion of Cos now looks like with the partial reconstruction of some of the columns forming the smaller temples.

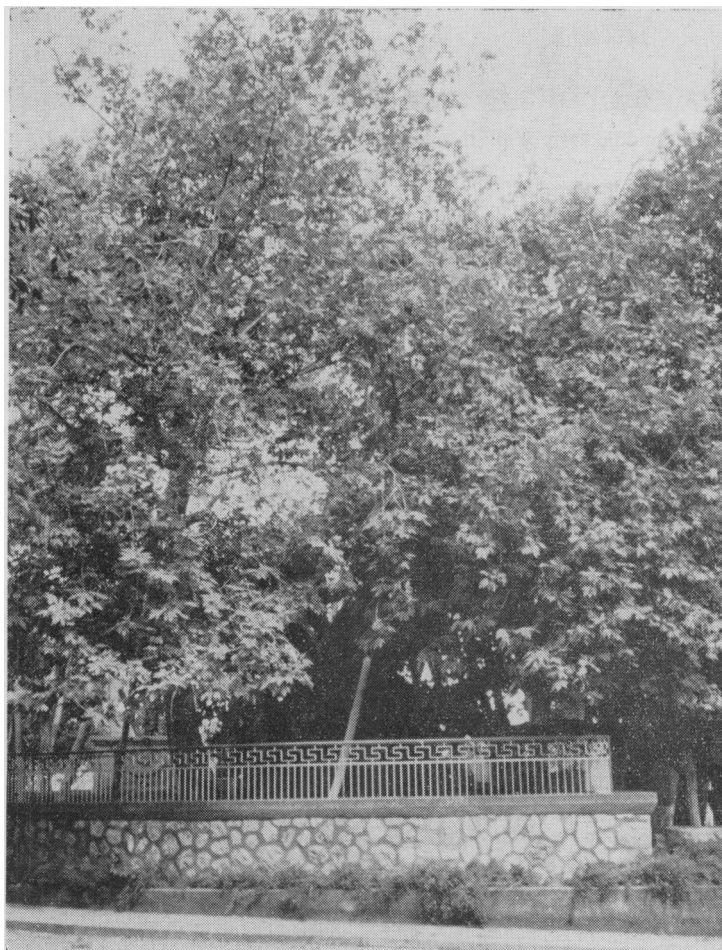
Your readers might also be interested to know that for a contribution as small as one dollar, they can become founder members of the International Hippocratic Foundation.

PHILIP HOPKINS

249 Haverstock Hill,
Hampstead,
London NW3 4PS.

REFERENCE

Playfair, A. S. (1971). *Journal of the Royal College of General Practitioners*, 21, 367-8.



The Hippocratic plane tree