

# His Daily Dose

in angina or hypertension, or both.



To facilitate effective  
once-daily dosage

**200mg**

new strength now available.

The long action of Beta-Cardone means that one dose in 24 hours is effective in hypertension, angina, or both. This length of action is intrinsic, and does not depend on extrinsic devices such as special coatings or slow release mechanisms.

Beta-Cardone does not accumulate in the body, and does not give rise to impotence, postural hypotension, nasal congestion, or dry mouth. And, to the patient, the once-daily dosage regimen is as easy to remember as his breakfast.

The L-O-N-G acting beta-blocker  
**Beta-Cardone**  
Protects the patient day and night.



Beta-Cardone (sotalol hydrochloride) is a trademark of  
DUNCAN, FLOCKHART & CO. LTD., LONDON E2 6LA.  
Full information is available on request.

# No more wide-awake dawns with **REM NOS**

◦First choice Nitrazepam for safer, natural sleep



Remnos is the DDSA trade mark for pharmaceutical preparations containing Nitrazepam BP 5mg Further information is available on request from: DDSA Pharmaceuticals, 310 Old Brompton Road, London SW5 9JQ



# Nystan<sup>TM</sup>-tp

**the antifungal of choice  
for even the most recalcitrant of  
vaginal candidal infections**

Full prescribing information available: The Technical Department, E. R. Squibb & Sons Ltd.,  
Regal House, Twickenham, Middlesex, TW1 3QT.

Nystan is a registered trade mark of nystatin produced by E. R. Squibb & Sons Ltd.



# FOCUS ON HYPERTENSION



## with 'Moduretic'

- \* Highly effective control of thiazide-responsive hypertension.
- \* Helps conserve potassium; supplements are contra-indicated.
- \* Encourages patient compliance.

### **MODURETIC®**

Amiloride hydrochloride and hydrochlorothiazide, MSD

#### **MULTI-PURPOSE DIURETIC**

'Moduretic' is available as peach-coloured, diamond-shaped tablets containing 5 mg amiloride hydrochloride and 50 mg hydrochlorothiazide. Detailed information is available to physicians on request.

® denotes registered trademark.



Merck Sharp & Dohme Limited  
Hoddesdon, Hertfordshire, EN11 9BU

# Normacol makes work for idle bowels

By increasing the bulk of the faecal mass Normacol brings about a natural stimulation of the peristaltic reflex. Normacol absorbs up to sixty times its own volume of water—this increase in bulk stimulates peristalsis and the bowels are allowed to function as they should.

**Normacol Standard** brown coated granules containing Sterculia BPC 62% and Frangula BPC 1949 8%.

**Normacol Special** white coated granules containing Sterculia BPC 62% alone.

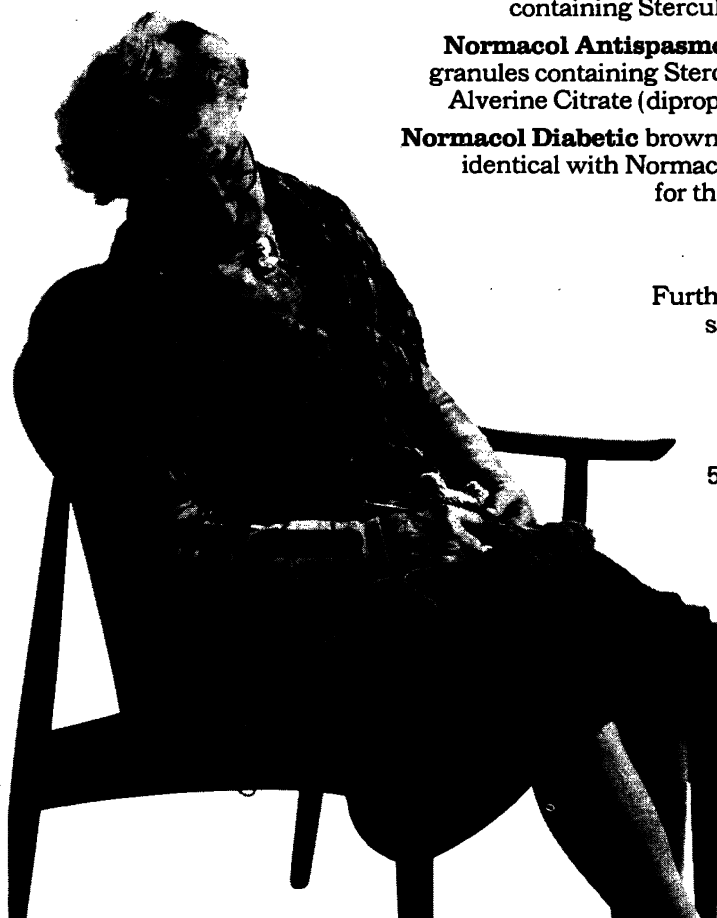
**Normacol Antispasmodic** orange coated granules containing Sterculia BPC 62% and Alverine Citrate (dipropyline citrate) 0.5%.

**Normacol Diabetic** brown coated granules is identical with Normacol Standard except for the absence of sugar.

Further information and samples on request.



Norgine Limited  
59-62 High Holborn  
London WC1V 6EB



# 99%

## SEPTRIN in urinary infections

**the clinical superiority that makes sure**

In a study of the sensitivities of acute urinary infection isolates to commonly-used oral antibacterials, 99.1% of the pathogens isolated were sensitive to Septrin<sup>1</sup>.

Septrin\* has a complete spectrum of activity against the organisms usually responsible for urinary tract infections. With its bactericidal action, speed of patient response and convenient dosage, Septrin has become the most widely-used antibacterial for treating urinary infections.

<sup>1</sup>J. int. med. Res (1974), 2, 400.

Septrin contains trimethoprim and sulphamethoxazole.

Full prescribing information is available on request.

Wellcome Medical Division, The Wellcome Foundation Ltd., Berkhamsted, Herts

\*Trade Mark



**Wellcome**



*Aureocort\**

(Chlortetracycline / Triamcinolone Acetonide)

*Cream·Ointment·Spray*

*The Classical answer to infected dermatoses*

LEDERLE LABORATORIES Cyanamid of Great Britain Limited  
Fareham Road Gosport Hants PO13 0AS Tel Fareham (03292) 6131

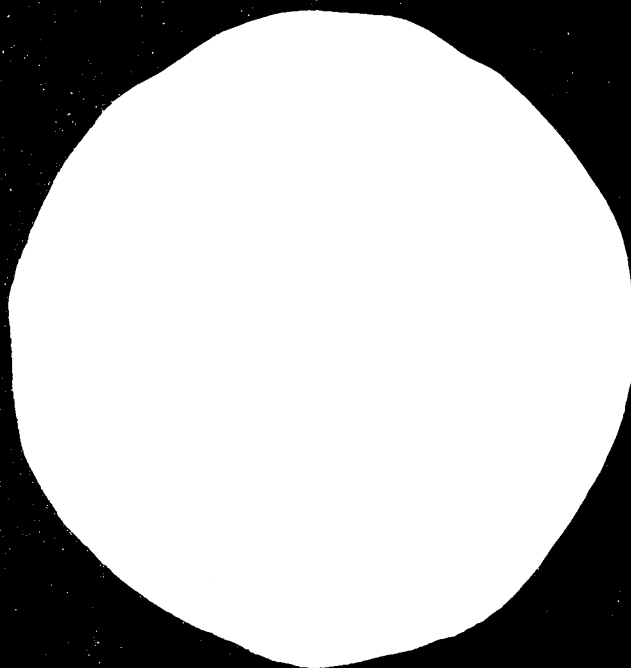


\*Aureocort is a Registered Trademark

# Trandate

(labetalol)

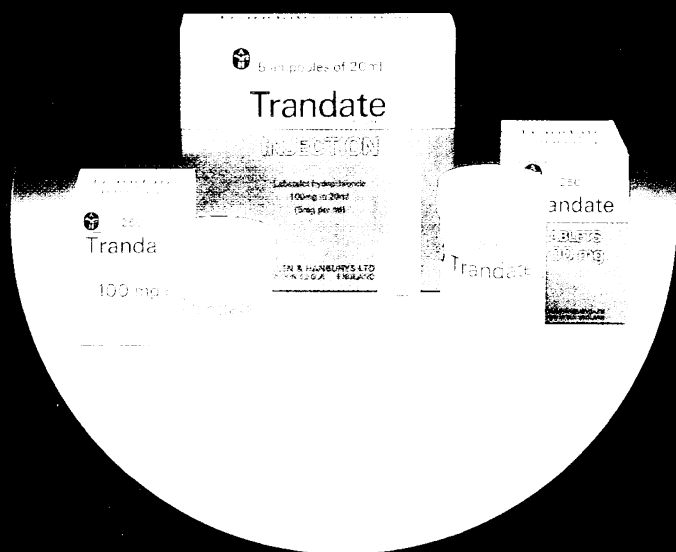
**A UNIQUE PROFILE IN HYPERTENSION**



**CONCURRENT ALPHA- AND BETA-  
ADRENOCEPTOR BLOCKADE**

THE USE OF TRANDATE IS BEING MONITORED IN THE UNITED KINGDOM





## IN PRINCIPLE

In essential hypertension, the peripheral resistance is increased and the cardiac output normal. The most desirable way to lower blood pressure is, therefore, to decrease the peripheral resistance and not adversely affect cardiac function. Unfortunately, the available antihypertensive drugs which reduce peripheral resistance by impairing sympathetic nerve activity or by other means, cause side effects that are unpleasant to patients.

TRANDATE lowers the blood pressure primarily by blocking alpha-adrenoceptors in peripheral arterioles and thereby reducing the peripheral resistance. The drug differs from simple alpha-adrenoceptor blockers in that it concurrently blocks beta-adrenoceptors in the heart.

This beta-blockade protects the heart from the reflex sympathetic drive normally induced by peripheral vasodilatation and so the reduction in blood pressure is achieved without cardiac stimulation. Conversely increased reflex activity modulates the beta-blocking effect of the drug on the heart and the resting cardiac output is not significantly changed.

The resultant effects of TRANDATE are that the blood pressure is decreased, the cardiac output is maintained at rest and after moderate exercise, and the barostatic reflexes remain sufficiently active to avoid side effects associated with postural hypotension in most patients.

A further advantage of TRANDATE is that it does not cause the sedation or lethargy often associated with centrally-acting antihypertensive agents.

# Trandate

(labetalol)

## A NEW KIND OF AN

## Produces a more

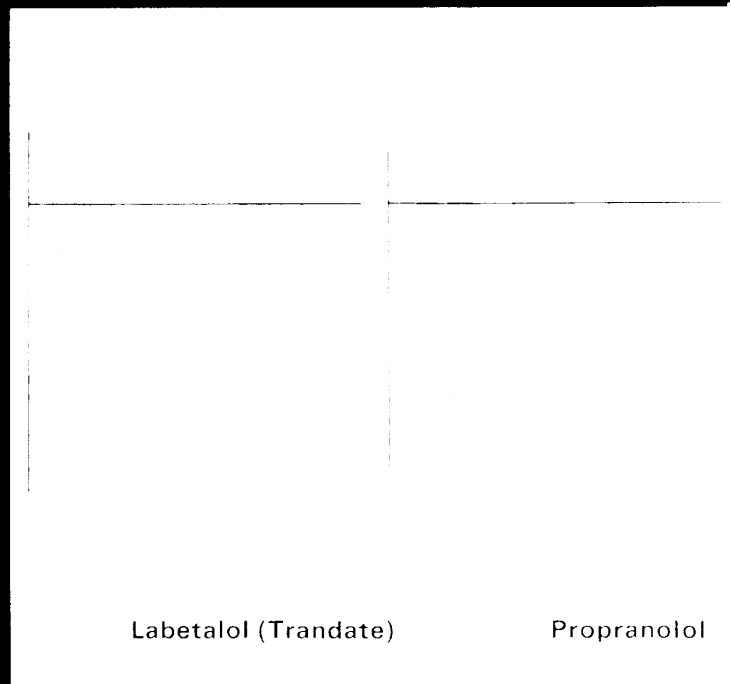


Diagram to illustrate the unique profile

*"The major haemodynamic dysfunction in uncomplicated essential hypertension is an increased peripheral vascular resistance associated with unchanged cardiac output. The desirable treatment, therefore, is to use drug treatments aimed at reducing peripheral resistance. The ideal*

# Trandate

(labetalol)

## ANTI-HYPERTENSIVE

### Normal circulation

Methyldopa

of action of Trandate in hypertension.

*antihypertensive drug should therefore be a vasodilator with minimal cardiac effects. Preliminary reports indicate that labetalol provides such effects. Therefore, this compound must be considered a positive development on the older beta-adrenoceptor blockers."*

*Brit. J. clin. Pharmacol., 1976, 3 (Suppl.3), 757*



### IN PRACTICE

Trandate, the first alpha- and beta-adrenoceptor blocker, was specifically developed to treat hypertension.

Trandate Tablets (100mg and 200mg) are indicated in all grades of hypertension when oral antihypertensive therapy is desirable.

Trandate Injection is for intravenous use in hospitalised patients when rapid reduction of blood pressure is essential.

Trandate offers important advantages in practice

- **High efficacy across the whole spectrum of hypertension**

From the recently diagnosed mild hypertensive to drug-resistant cases including patients in hypertensive crisis.

- **Low incidence of dose-limiting side effects**

The side effects usually associated with antihypertensive therapy are greatly reduced or absent.

- **Minimum physiological disturbance**

Cardiac output is maintained and renal function is not adversely affected.

- **Single drug therapy**

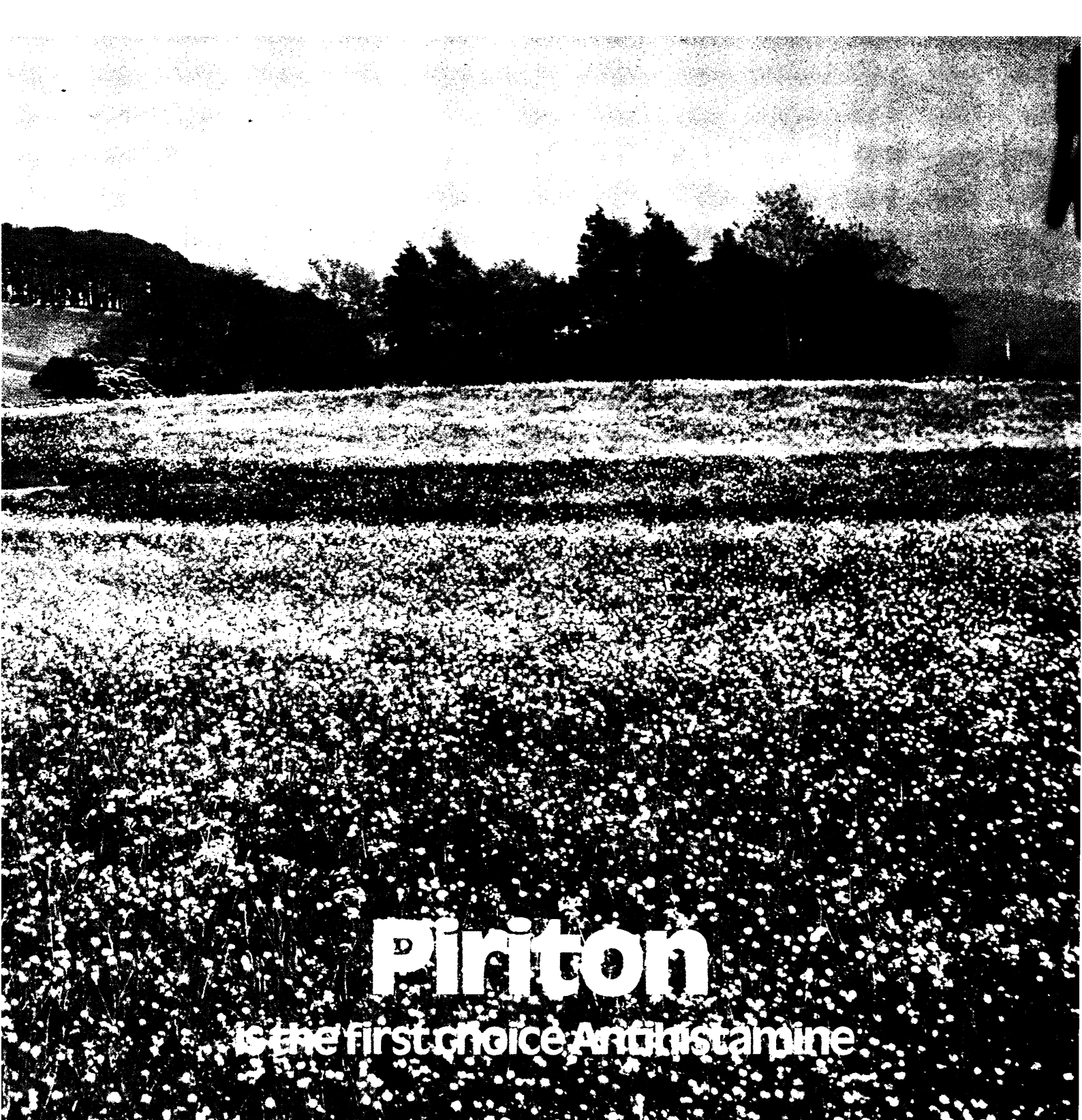
Hypertension is usually controlled with Trandate alone and complicated regimens involving other antihypertensives are unnecessary.

The use of Trandate Tablets in the United Kingdom is being monitored.

Full prescribing information and details of the procedure involved in monitoring patients on Trandate are available on request.



Trandate is a trade mark of  
ALLEN & HANBURYS LTD LONDON E2 6LA



# Piriton

is the first choice Antihistamine

**IN HAY FEVER  
INSECT BITES AND STINGS  
FOOD ALLERGIES · URTICARIA  
ALLERGIC DERMATOLOGICAL  
DISORDERS**

Piriton is available in a wide range of preparations to suit each individual patient and each individual need :-

**Piriton Tablets** for routine therapy

**Piriton Spandets** for sustained action

**Piriton Syrup** for paediatric use

**Piriton Injection** for emergencies

All Piriton preparations contain chlorpheniramine maleate BP.

## Piriton - still setting the standards in Antihistamine therapy

Full prescribing information is available on request. Piriton and Spandet are trade marks of ALLEN & HANBURY LTD LONDON E2 6LA



10

GIG 92L

**Amoxil** syrup:  
rapid recovery in children's  
respiratory infections.

**Rapid Recovery.**

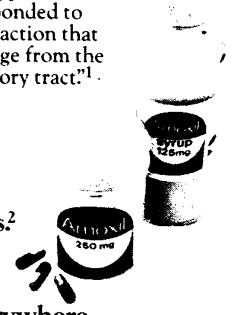
Of 243 children with various upper and lower respiratory tract infections 84% responded to Amoxil within 3 days, "...a speed of action that would prevent any permanent damage from the infective process within the respiratory tract."<sup>1</sup>

Amoxil Syrup - "well liked by all the children."<sup>1</sup>

Simple trouble free dosage.

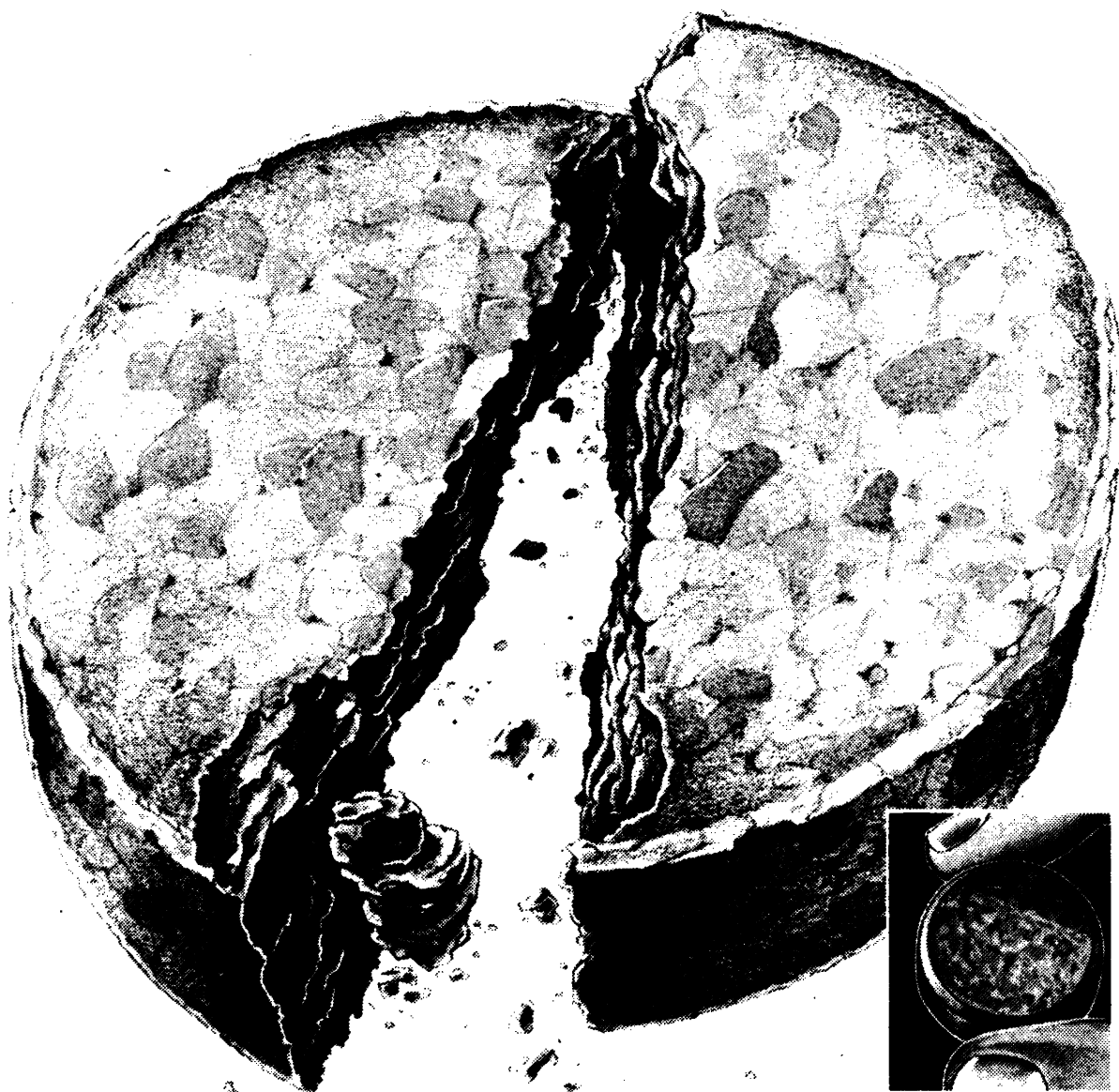
Low incidence of side effects.<sup>2</sup>

**Amoxil**  
makes all the difference everywhere.



<sup>1</sup> Br. J. Clin. Pract., (1975), 29, (8), 203.  
<sup>2</sup> Br. J. Clin. Pract., (1975), 29, 81.  
Full prescribing information on Amoxil (amoxycillin) is available from

**Bencard**  
Great West Road, Brentford, Middles.



## Fybranta in diverticular disease

In a recent clinical trial published in the British Medical Journal,\* a comparison was made between three forms of treatment for patients with symptomatic diverticular disease. The authors concluded from this study that Fybranta Tablets are more effective than a high-residue diet or a bulking agent.

Fybranta did not merely improve the symptoms, the paper states that Fybranta also normalized the pathophysiological changes which diverticular disease brings about.

60% of the patients were entirely symptom free after only one month on the Fybranta regime. In addition, in all patients stool weight increased significantly; transit time was reduced by nearly a half and intra-colonic pressure was reduced to within normal limits.

Fybranta tablets are easily carried when the patient cannot eat at home. Chewed with a drink, they supply a day's cereal fibre in a highly acceptable form. Each tablet contains: Bran 2g.

\*Brit med J (1976) 1, 989-990.

# Fybranta

TRADE MARK

## Convenient, chewable, prescribable bran tablets

Full prescribing information on request from: Norgine Limited, 59-62 High Holborn, London WC1V 6EB

# CLASSIFIED ADVERTISEMENTS AND NOTICES

Classified advertisements are welcomed and should be sent to: Mr Robert Clarke, Advertisement Manager, *The Journal of the Royal College of General Practitioners*, Update Publications Ltd., 33/34 Alfred Place, London WC1E 7DP. Copy must be received by 1st of the month preceding the month of issue to ensure inclusion. Every effort will be made to include advertisements received after this date but publication cannot be guaranteed and the advertisement may have to be held over to the following issue.

The charge for space in this section is £5 per single column centimetre, plus 25p if a box number is required. Fellows, members and associates of the Royal College of General Practitioners may claim a ten per cent reduction.

The inclusion of an advertisement in this Journal does not imply any recommendation and the Editor reserves the right to refuse any advertisement. All recruitment advertisements in this section are open to both male and female applicants.

Readers are asked to mention *The Journal of the Royal College of General Practitioners* when replying to all advertisements.

Opinions expressed in *The Journal of the Royal College of General Practitioners* and the supplements should not be taken to represent the policy of the Royal College of General Practitioners unless this is specifically stated.

## DEVON AREA HEALTH AUTHORITY PLYMOUTH HEALTH DISTRICT VOCATIONAL TRAINING FOR GENERAL PRACTICE

**Applications** are invited from fully registered doctors for five posts in this three year scheme commencing on the 1st September, 1977.

An introductory month in General Practice will precede two years to be spent in rotating hospital posts:

Rotations 1, 2 and 3 will be of 4 months' posts in Geriatrics, Accident and Emergency and Psychiatry, and 6 months posts in Obstetrics and Paediatrics.

Rotation 4 will be 6 months' posts in Accident and Emergency, General Medicine, Paediatrics and Obstetrics.

Rotation 5 will be 6 months' posts in General Medicine, Accident and Emergency, Psychiatry and Geriatrics.

The final 11 months will be spent in an approved training practice.

A half-day release course will be held in the academic term during the three years. A full programme of meetings is available at the Plymouth Postgraduate Medical Centre. Excellent library facilities are available.

The Scheme is recognised for M.R.C.G.P., D.Obst.R.C.O.G., and D.C.H.

Single and married accommodation will be available during the hospital period.

Application forms and full details obtainable from Miss A. M. Ling, Senior Administrative Assistant, Plymouth General Hospital, North Friary House, Greenbank Terrace, Plymouth PL4 8QQ.

Forms should be returned by the 21st June; the short list will be drawn up on the 29th June, and it is hoped to interview on the 8th July, 1977.

## MERSEY REGIONAL COUNCIL FOR POSTGRADUATE MEDICAL EDUCATION AND LIVERPOOL UNIVERSITY DEPARTMENT OF CHILD HEALTH

### "CHILD DEVELOPMENT AND HANDICAP IN CHILDHOOD"

A **day-release** course will commence in October 1977 and continue over three University Terms. The course meets the requirements of the Department of Education and Science, providing appropriate training for School Medical Officers, and is also suitable for junior hospital staff and General Practitioners.

Further details and application forms from:

**The Postgraduate Office,  
Faculty of Medicine,  
University of Liverpool,  
PO Box 147,  
LIVERPOOL L69 3BX.  
Tel: 051-709 3114**

## INDEX TO ADVERTISERS

	page		page
Allen & Hanburys Ltd		Leo Laboratories Ltd	
<i>Trandate</i>	345/346/347	<i>Burinex K</i>	outside back cover
<i>Piriton</i>	348		
Bencard Ltd		Merck Sharp & Dohme Ltd	
<i>Amoxil</i>	352	<i>Moduretic</i>	326
Dales Pharmaceuticals Ltd		Norgine Laboratories Ltd	
<i>Cutisan</i>	362	<i>Fybranta</i>	358
DDSA Pharmaceuticals Ltd		<i>Normacol</i>	334
<i>Remnos</i>	322		
Duncan Flockhart & Co Ltd		E. R. Squibb & Sons Ltd	
<i>Beta Cardone</i>	inside front cover	<i>Nystan</i>	325
Lederle Laboratories Ltd		The Wellcome Foundation Ltd	
<i>Aureocort</i>	340	<i>Seprin</i>	339

# UPDATE ART GALLERY



## The Jerusalem Folio

This folio contains a selection of 34 of the drawings by Brian Lalor which were used to illustrate 'The Jerusalem Guide', reproduced in their original size. There are 8 panoramas, including views of the Old and New Cities, The Mount of Olives and Mount Zion, plus drawings of some of the famous churches, gates, fountains and other places of architectural and historical interest to be found in this fascinating city.

Large drawings 19½ in x 14½ in; Small drawings 14½ in x 9½ in.

Price £3.00, including postage and packing.

## Rowlandson's Medical Caricatures

The medical caricatures of Thomas Rowlandson have been appreciated and sought after by doctors from his own time to the present day, but original prints are expensive and difficult to obtain. So it is with pleasure that Update Publications are able to offer a limited number of sets of facsimiles of four of Rowlandson's best known prints – 'Medical Dispatch', 'The Anatomist', 'A-going, A-going' and 'Bath Races' – taken from originals executed between 1800 and 1812, which are in their own collection. These facsimiles were printed by the ancient craft process of collotype, on a high quality, rag-based paper specially made for this edition, in order to reproduce the colour and texture of Rowlandson's original etchings as closely as possible.

The four facsimiles are presented in the original size in matched coloured mounts, each measuring 18½ in x 13½ in, ready for framing.

Price £12.75 per set, including postage and packing.

**UPDATE PUBLICATIONS LIMITED**

33/34 Alfred Place, London WC1E 7DP

LEICESTERSHIRE AREA HEALTH AUTHORITY  
(Teaching)

## VOCATIONAL TRAINING FOR GENERAL PRACTICE

Applications are invited from recently qualified Medical Graduates for a course of training starting November this year. This is a three year programme recognised by the Royal College of General Practitioners comprising:

1. An introductory period in a teaching general practice.
2. Four successive six month hospital appointments at Senior House Officer grade in any combination of the following specialties: General Medicine, Paediatrics, Obstetrics, Accident & Emergency Surgery with Orthopaedics, Psychiatry, Anaesthetics and General Medicine with Geriatric Medicine, E.N.T./Dermatology. These posts are at the Leicester Royal Infirmary, Leicester Royal Infirmary Maternity Hospital, Leicester General Hospital, The Towers Hospital and Groby Road Hospital, Leicester.
3. A final period in a teaching General Practice with day release for training in Ophthalmology, Dermatology, E.N.T. and Paediatrics.

A half day study programme will be continuous throughout the hospital period with the General Practitioner Trainers and the Academic Departments at the University of Leicester Medical School.

Single accommodation will be available throughout the hospital appointments. Married accommodation may be available.

Application forms and further details to be obtained from the District Administrator, South West District, The Leicester Royal Infirmary, Infirmary Square, Leicester LE1 5WW.

## THE UNIVERSITY OF SHEFFIELD FACULTY OF MEDICINE

**Intensive G.P. Refresher Course**  
**Monday, 19 – Friday, 23 September, 1977**

### PAEDIATRICS

This course, organised by the University Departments of Paediatrics and Community Medicine, will be held at the Children's Hospital, Sheffield.

The Hospital will be thrown open to the participants and will seek to bring them into close contact with a wide range of modern paediatric practice.

Accommodation will be available in a University Hall of Residence.

This course is organised under Section 63 of the Public Health Act, 1968. The fee for those not eligible under Section 63 will be £25.00.

The course is limited to 25 doctors and enquiries and applications (stating whether or not residential accommodation is required) should be addressed to:

**Associate Postgraduate Dean,**  
**University of Sheffield Medical School,**  
**Faculty of Medicine,**  
**Beech Hill Road,**  
**Sheffield S10 2RX**

Closing date: 1 July, 1977.



# What the papers say

## Shortest Acting

"With doses up to 1 mg, the natriuresis was largely complete within 3 hrs."<sup>3</sup>

"It (Burinex) has a short duration of action, being virtually complete in 3 hrs."<sup>4</sup>

## Fast Acting

"The rapid absorption from the gastrointestinal tract is reflected in the brisk diuresis established within the hour!"<sup>1</sup>

"Its (Burinex Injection) onset of action is within 10 min."<sup>2</sup>

"Bumetanide is rapidly absorbed from the gut."<sup>3</sup>

## Clinically Effective

"Fourteen patients showed a good diuretic response on bumetanide where previous treatment with frusemide had proved either unsatisfactory or too slow."<sup>5</sup>

"An impressive diminution of the signs of pulmonary oedema was seen in most patients and in some the clearance of alveolar oedema was dramatic."<sup>6</sup>

"Based upon our experience with the use of bumetanide in several hundreds of patients and the detailed studies reported above, it may be concluded that this new diuretic agent is a very useful drug in the treatment of congestive cardiac failure."<sup>7</sup>

"Our study... confirms that bumetanide is a potent diuretic effective over a wide dose range and in a variety of clinical conditions."<sup>1</sup>

## Well tolerated

"Burinex was extremely well tolerated."<sup>12</sup>

"Bumetanide was well tolerated by patients."<sup>1</sup>

"Overall, bumetanide showed itself to be a safe and effective diuretic when administered to severely ill patients in a busy hospital milieu."<sup>5</sup>

## The correct amount of K

"It is known from short-term studies that 1 mg. of bumetanide increases the excretion of potassium by 10-15 mmol daily (Asbury et al, 1972; Olesen et al, 1973; Davies et al, 1974). Two tablets of the combined preparation Burinex K contain 1 mg. of bumetanide and 16 mmol of potassium."<sup>8</sup>

## At the correct time

"35% of the potassium chloride is released by one hour, the rest being released over a period of six hours."<sup>4</sup>

## The Morning OR Evening diuretic

"The rapid onset and short duration of action of loop diuretics are clearly desirable when a rapid diuresis is indicated, and when given in the evening to patients with chronic heart failure, the short duration of action can ensure a good nights sleep undisturbed by nocturia or breathlessness."<sup>9</sup>

"The use of potent and short-acting diuretics such as bumetanide allow the Physician and patient scope to decide upon the most appropriate time for administration and so reduce major disruptions in the patient's daily routine."<sup>10</sup>

"Patients who go out to work may find Burinex K given in the evening more socially acceptable."<sup>11</sup>

## Patients prefer Burinex K

"These results indicate that when long-term diuretic/potassium supplement therapy is required, Burinex K is a more acceptable regimen to the patients than one in which diuretic + Slow K are given separately."<sup>13</sup>

"Patients showed a highly significant preference to take two tablets on one occasion (Burinex K) rather than two different types of tablet on three separate occasions (Lasix + K)."<sup>14</sup>

\* Burinex is a trade mark

Rx ... But of course the decision is yours.

# Burinex K\*

Tablets contain 0.5 mg bumetanide with a slow release core of 573 mg (7.7mEq) of potassium chloride.

1. Postgrad. Med. J., 51, 10, (1975)
2. Danish Med. Bull., 21, 63, (1974)
3. Clin. Pharm. Ther., 15, 141, (1974)
4. J. Int. Med. Res., 2, 314, (1974)
5. Brit. J. Clin. Prac., 28, 311, (1974)
6. Brit. J. Clin. Prac., 29, 7, (1975)
7. Postgrad. Med. J., 51, (Suppl. 6), 54, (1975)
8. Brit. J. Clin. Prac. 30, 11-14 (1976)
9. Leading Article, Brit. Med. J., 2, 521, (1975)

10. J. Int. Med. Res., 3, 241, (1975)
  11. Postgrad. Med. J., 51, (Suppl. 6), 71, (1975)
  12. Acta. Med. Scand., 193, 119, (1973)
  13. J. Int. Med. Res., 3, 104, (1975)
  14. J. Int. Med. Res., 4, 37-41 (1976)
- Full prescribing information available from



Leo Laboratories Limited,  
Hayes Gate House, Hayes, Middx.