

Amoxil success everyday

Otitis media

Amoxil is quoted as 'the treatment of choice' in otitis media in children under five in a recent expert review in the Practitioner.¹

Bronchitis

"In my opinion, the most straightforward treatment of this condition, in patients not allergic to penicillin, is amoxycillin... taken at the first sign of increasing sputum purulence."¹

Other respiratory infections

In various upper and lower respiratory infections, Amoxil has been shown to achieve 84% response within three days of the commencement of treatment in 243 children studied.²

References 1. Practitioner (1977) **219**, 449-455. 2. Brit. J. Clin. Pract. (1975), **29**, (8), 203.

Further information on Amoxil (regd.) amoxycillin is available on request to the company.
Bencard, Great West Road, Brentford, Middx.

 **Bencard**

Reflux oesophagitis

the role of gastric acid

Number 1
in a series

Healing

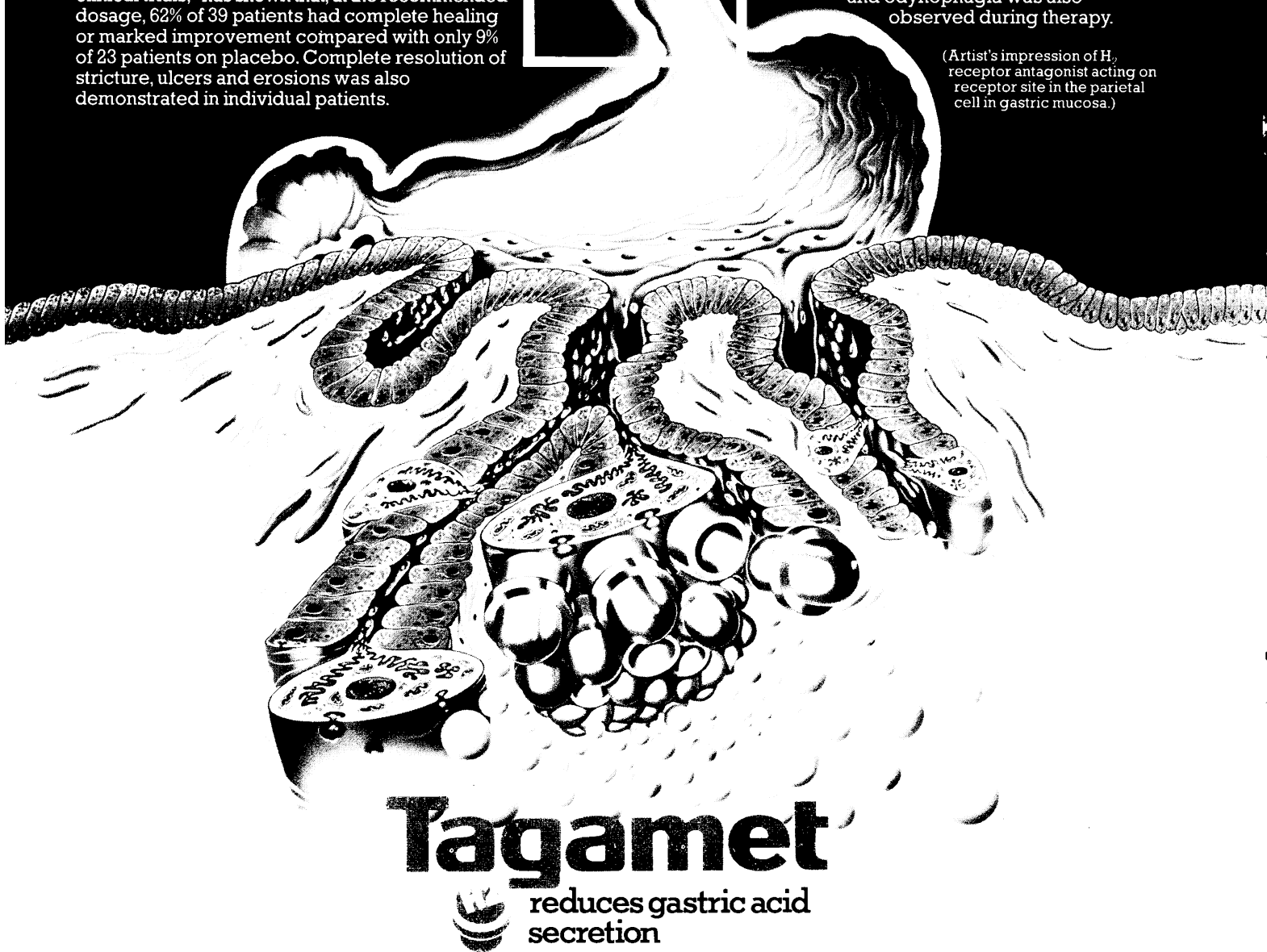
By its fundamental action in reducing both acidity and volume of gastric juice,¹ 'Tagamet' has been shown to achieve complete healing or marked improvement in the majority of patients with reflux oesophagitis.^{2,3} Overall experience in clinical trials,² has shown that, at the recommended dosage, 62% of 39 patients had complete healing or marked improvement compared with only 9% of 23 patients on placebo. Complete resolution of stricture, ulcers and erosions was also demonstrated in individual patients.



Symptomatic Relief

In one study³ most patients obtained rapid symptomatic improvement during 'Tagamet' treatment and within 4 weeks many were free from symptoms. A considerable reduction in the incidence of heartburn, reflux, dysphagia and odynophagia was also observed during therapy.

(Artist's impression of H₂ receptor antagonist acting on receptor site in the parietal cell in gastric mucosa.)



Tagamet



reduces gastric acid
secretion

References

1. Pharmacological evaluation of cimetidine, a new Histamine H₂-Receptor Antagonist, (1975) Brit. J. clin. Pharmacol., 2, 481.
2. Data on file (March 1977) Smith Kline & French.

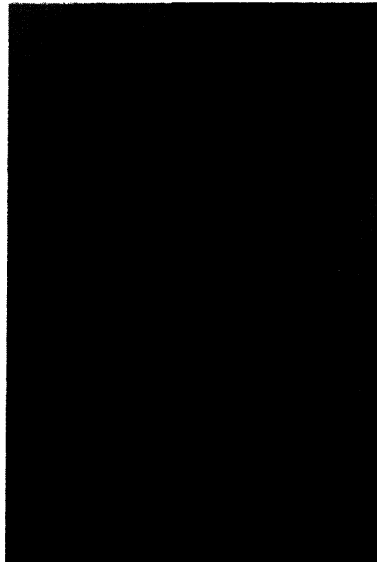
3. Cimetidine in the treatment of oesophagitis. (1977) Proceedings of the Second International Symposium on Histamine H₂-Receptor Antagonists. Excerpta Medica, p. 297.

'Tagamet' (cimetidine) is available as 200mg film-coated tablets, 200mg/5ml syrup and 200mg/2ml ampoules.

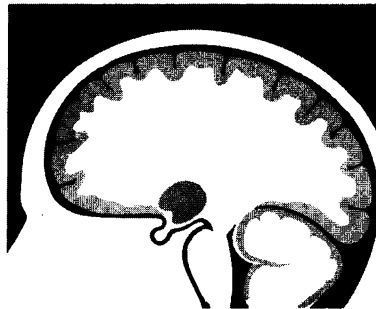
SK&F
a SmithKline company

Full prescribing information is available from:-
Smith Kline & French Laboratories Limited
Welwyn Garden City
Hertfordshire AL7 1EY
Telephone: Welwyn Garden 25111
'Tagamet' is a trade mark.

TG:AD18



Hot flushes, sweating



Irritability, anxiety, depression



Endometrial hyperplasia

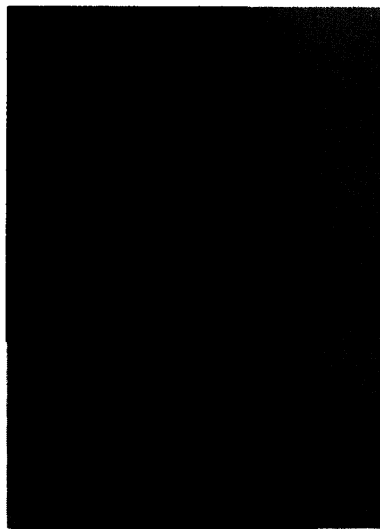
Below the surface of the climacteric



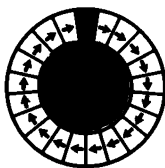
Dry vagina



Osteoporosis
(affects one
patient
in three¹)



Irregular periods



Cyclo-Progynova

The all-round treatment for menopausal problems

1. *Modern Medicine* 45, 10, 1977 **Presentation** Circular memo-pack holding 11 white tablets each containing 2mg oestradiol valerate and 10 orange tablets each containing 2mg oestradiol valerate and 0.5mg norgestrel. All tablets are sugar-coated with 'B' in a regular hexagon printed on each side. **Uses** i) The alleviation of symptoms characteristic of the menopause. Cyclo-Progynova may be used both before and after the menopause. ii) The correction of irregularities of the menstrual cycle caused by abnormal oestrogen production and diminishing corpus luteum function as the menopause approaches. **N.B.** Cyclo-Progynova should not be used as an oral contraceptive. **Dosages and administration** Patients still having periods may start tablet-taking on the fifth day of the cycle, counting the first day of bleeding as day one. Patients whose periods are very irregular or non-existent may start taking the tablets at any time. The memo-pack sticker should be attached so that the starting day is correctly indicated in the red section. One white tablet is taken daily for eleven days, followed by one orange tablet daily for ten days. An interval of seven days follows each pack, during which bleeding will normally occur. **Contra-indications** Severe disturbances of liver function, jaundice or persistent itching during a previous pregnancy. Dubin-Johnson syndrome. Rotor syndrome, existing or previous thromboembolic processes (including strokes), sickle-cell anaemia, existing or treated cancer of the breast or endometrium, endometriosis, mastopathy, myomatous uterus, congenital disturbances of lipid metabolism, a history of herpes of pregnancy, otosclerosis with deterioration in previous pregnancies. **Warnings/Side effects** Use with caution in patients who have a history of congenital abnormalities of lipid metabolism. Some women are predisposed to cholestasis during steroid therapy. Uterine fibroids may be affected by oestrogens and should be checked frequently. **Note:** Treatment should be stopped at once if jaundice or pregnancy occurs or if advised for patients receiving long-term treatment with Cyclo-Progynova. In patients with chronic liver disease, liver function with an oral contraceptive is not recommended. **Overdosage** Toxic effects of overdosage have not been reported, but, if desired, there is a significant rise in blood pressure. **Precautions and special information** Periodical gynaecological examinations are should be checked every 8-12 weeks. Irregular bleeding during tablet-taking should be investigated. The use of Cyclo-Progynova gastrical lavage can safely be used. There are no special antidotes, and further treatment should be symptomatic. **Legal category** POM. **Schering Chemicals Limited, Pharmaceutical Division, Burgess Hill, West Sussex RH15 9NE.**

Beconase

IS FOR EVERYONE WITH HAY FEVER

Hay fever, often regarded as a trivial disorder, can be a major social inconvenience. And so can the sedative side effects of antihistamines – Or rebound congestion from topical decongestants.

Steroid therapy has up until recently been reserved for the more severe cases only. But Beconase Nasal Spray is changing all that. Now in its fourth season "at grass", Beconase has proved highly effective for both the prophylaxis and the relief of nasal symptoms in hay fever. With no evidence of adrenal suppression or adverse changes in the nasal mucosa. And without causing sedation or rebound congestion.

Beconase makes sense even in mild cases of seasonal allergic rhinitis. If preferred, it can be added to the patient's usual prescription for antihistamines with the instructions to use the Beconase regularly and the antihistamines p.r.n. Ideally, Beconase should be started before exposure to the allergen, but it can also be prescribed to *relieve* nasal symptoms.



**Whatever else you
prescribe for Hay Fever
make sure they get
Beconase routinely**

Beconase Nasal Spray is a metered-dose aerosol delivering 50mcg beclomethasone dipropionate BP per actuation into a specially designed nasal applicator.



Full prescribing information is available on request.
Beconase is a trade mark of ALLEN & HANBURYS LTD LONDON E2 6LA

1928 Nitrites
1936 Thiocyanates
1949 Ganglion Blockers
1952 Reserpine
1954 Alpha-Blockers
1957 Oral Diuretics
1960 Neurone Blockers
1963 Methyldopa
1969 Beta-Blockers

Trandate

(labetalol)

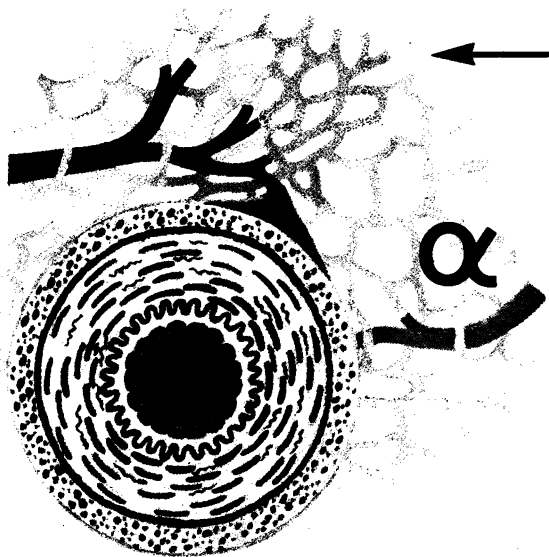
the first alpha-beta-blocker

A SIGNIFICANT

H

FURTHER INFORMATION APPEARS OVERLEAF

A MORE RATIONAL TREATMENT FOR HYPERTENSION



← THE IMPORTANCE OF ALPHA-BLOCKADE

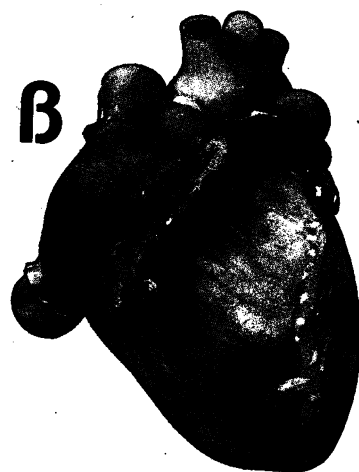
In uncomplicated essential hypertension, peripheral resistance is raised and cardiac output is normal. The most rational way to lower the blood pressure is, therefore, to decrease the peripheral resistance without adversely affecting cardiac function.

Trandate lowers the blood pressure primarily by incomplete competitive blockade of the alpha-adrenoceptors in peripheral arterioles thereby reducing peripheral resistance. Sufficient sympathetic activity remains to avoid symptoms associated with postural hypotension in most patients.

BALANCED BY BETA-BLOCKADE →

The resulting fall in peripheral resistance would, with simple alpha-blocking drugs and vasodilators, result in a reflex tachycardia which is unpleasant to patients and may be harmful. But the beta-blocking component of Trandate's unique profile of activity counteracts this effect and reduction of blood pressure is achieved without cardiac stimulation.

However, in contrast with simple beta-blocking drugs, the cardiac output is not *reduced* at rest and after moderate exercise because Trandate's beta-blocking action is balanced by the increased reflex sympathetic drive resulting from the main alpha-blocking action.



Trandate

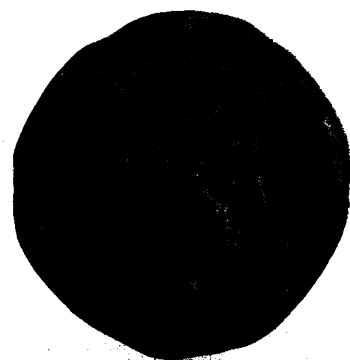
(labetalol)

A UNIQUE PROFILE IN HYPERTENSION

- Produces a more normal circulation
- Is effective in all grades of hypertension
- Has a low incidence of use-limiting side effects
- Permits single-drug therapy improving patient compliance



Full prescribing information is available on request.
Trandate is a trade mark of
ALLEN & HANBURYS LTD LONDON E2 6LA.



Complete diuretic

A black and white photograph showing a large number of Aldactide 50 tablets. The tablets are rectangular and have a distinctive scored pattern on one side. They are arranged in a way that creates a sense of depth and perspective, with some tablets in the foreground and others receding into the background. The lighting is dramatic, highlighting the texture of the tablets and the sharp lines of the scores.

New Aldactide 50 is today's answer for those patients with early hypertension. New Aldactide 50 is the once-a-day way gently to lower blood pressure without postural hypotension or loss of potassium.

On its own, or in combination with other antihypertensives, new Aldactide 50 offers tailor-made therapy for your patients with early hypertension.

NEW Aldactide 50 the diuretic for early hypertension

Prescribing Information

Presentation

Aldactide 50 is presented as scored, cream-coloured tablets stamped "SEARLE 180" on one side containing Spironolactone B.P. 50mg with Hydroflumethiazide B.P. 50mg.

Uses

Hypertension.

Dosage and Administration

Aldactide 50 - one or two tablets with breakfast or the first main meal of the day.

Contra-indications, Warnings etc.

Aldactide should not be given in acute renal insufficiency, rapidly

progressing impairment of renal function, anuria, hyperkalaemia or in the presence of sensitivity to either component.

Administration not recommended if serum potassium is raised.

Thiazides have been reported to decrease glucose tolerance and to induce hyperuricaemia. Spironolactone has been reported to induce gastrointestinal upsets, drowsiness, headache and mental confusion. Potentiation of the action of other antihypertensive drugs occurs.

Thiazides as well as canrenone, a metabolite of spironolactone, appear in breast milk. Acute overdosage may be manifested by drowsiness, mental confusion, nausea, vomiting, dizziness or diarrhoea.

The use of any drug in women of childbearing potential requires that the benefits of therapy be weighed against its possible hazards to the mother and foetus.

Product Licence Holder and Number
G.D. Searle & Co. Ltd. 0020/0082

Basic N.H.S. Cost
40 tablets £6.38.

cover in hypertension

ALDACTONE 100

100

90

Aldactone 100 is the key to the management of advanced hypertension. By its unique action, Aldactone 100 provides highly effective control of blood pressure without postural hypotension or loss of potassium.

On its own, or in combination with other antihypertensives, Aldactone 100 provides reliable antihypertensive therapy for your patients with advanced hypertension.

Aldactone 100

the diuretic for advanced hypertension

Prescribing Information

Presentation

Aldactone 100 is presented as buff coloured tablets, stamped "SEARLE" on one side, containing Spironolactone B.P. 100mg.

Uses

Hypertension.

Dosage and Administration

The usual effective dose is 100mg daily. This may be increased to 400mg daily if necessary.

Contra-indications, Warnings etc.

Aldactone should not be given in acute renal insufficiency, rapidly progressing impairment of renal function, anuria or hyperkalaemia.

Administration is not recommended in the presence of a raised serum potassium. Canrenone, a metabolite of spironolactone, appears in breast milk.

Side effects are mild and infrequent. Drowsiness, mental confusion, gastrointestinal intolerance, gynaecomastia, mild androgenic effects and skin rashes have been reported. True toxic effects have not been reported in overdosage.

In the event of hyperkalaemia, discontinue the drug, reduce potassium intake and administer potassium-excreting diuretics and intravenous glucose with insulin or an oral exchange resin as appropriate.

The actions of other antihypertensive drugs may be potentiated and their dosage should first be reduced by at least 50% when Aldactone is added to the regimen, and then adjusted as necessary. The use of any drug in women of childbearing potential requires that the benefits of therapy be weighed against its possible hazards to the mother and foetus.

Product Licence Holder and Number

G.D. Searle & Co. Ltd. 0020/0048

Basic N.H.S. Cost

50 tablets £12.91.

SEARLE

Searle Laboratories, Division of G.D. Searle and Co. Ltd.,
P.O. Box 53, Lane End Road, High Wycombe, Bucks. HP12 4HL.
Telephone: High Wycombe 21124.

Full prescribing information is available on request. Aldactide, Aldactone and Searle are registered trade marks.

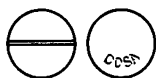


One of a series of Hibernating animals: the Dormouse (*Myoxus avellanarius*) hibernates September to April

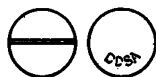
For safe, natural, undisturbed sleep...

REM NOS

Nitrazepam/DDSA



Remnos 5mg tablets



Remnos 10mg tablets

Now available in 2 strengths from DDSA only

Remnos brand of Nitrazepam is now available as tablets 5mg and 10mg

Patient convenience

Many patients require 2x5mg tablets at night. Now one tablet of Remnos 10mg fulfills this need

Prescribing convenience

The distinctive yellow colour of tablets Remnos 10mg clearly distinguishes this dosage form from tablets Remnos 5mg thus avoiding the likelihood of confusion

Cost saving

1x100 Remnos 10mg tablets costs 10% less than 2x100 Remnos 5mg



successful scriptwriting

A FIRST CHOICE IN CHEST INFECTIONS



The quiet revolution in ampicillin therapy

Ampicillin, the most widely used antibiotic in the U.K., was discovered 16 years ago by Beecham.

Now, with Talpen, Beecham research has taken ampicillin therapy an important step forward.

Talpen (talampicillin) is much better absorbed and is changed rapidly in the body to deliver more ampicillin into the blood. So double the peak ampicillin serum levels are achieved twice as quickly.¹ The incidence of diarrhoea is greatly reduced,² which means less discomfort for your patients. And Talpen's easy-to-remember t.i.d. dosage is much more convenient, too. Prescribe Talpen now for routine infections – and both you and your patients will notice a definite change for the better.

That's what quiet revolutions are all about.

Talpen

talampicillin



Talpen is a product of British research at **Beecham Research Laboratories** Brentford, England. A branch of Beecham Group Limited. PL 0038/0209 *regd

Indications: Typical indications include: Acute and Chronic Bronchitis, Pneumonia, ENT infections, and U.T.I.
Usual Adult Dosage: One tablet three times a day. Each tablet contains 250mg of the ampicillin ester, talampicillin hydrochloride. **Contra-indication:** Penicillin hypersensitivity. **Precaution:** Talpen is not recommended for patients with severe renal or hepatic impairment. **Side-effects:** As with other penicillins. An erythematous rash may occasionally occur, the incidence is particularly high in patients with infectious mononucleosis. Each 250mg of talampicillin hydrochloride is chemically equivalent to 169mg of ampicillin. Further information is available on request. 1. Jones, K.H., et al., to be published. 2. Br. J. Clin. Pract., 1975, 29, 255.

food ...or thought

A sensible diet is an important factor in the management of gastro-intestinal complaints. Sensible medication is another. This is where Libraxin comes in.

Psychological factors are considered important in the management of many illnesses, but perhaps no more so than in gastro-intestinal complaints. In some, for example irritable colon, the emotions

are thought to have an aetiological role; in others, for example peptic ulcer, they may influence the clinical manifestations and the subsequent treatment of the patient.

Libraxin helps to improve the prognosis by altering the patient's outlook whilst at the same time relieving the physical symptoms by decreasing hypermotility and hypersecretion in the gut.

LIBRAXIN

For the treatment of a wide range of gastro-intestinal disorders with an emotional component, including nervous dyspepsia, peptic ulcer, cardiospasm, pylorospasm, nervous or irritable colon.

Libraxin is the trade mark for pharmaceutical preparations containing chlordiazepoxide and clidinium bromide.

References

Cromwell, H.A., *Med. Tms* (NY), 1968, 96, 933
Head, H.B., and Hammond, J.B., *Amer. J. dig. Dis.*, 1968, 13, 540
McHardy, G., *et al.*, *Gastroenterology*, 1968, 54, 508

Full prescribing information is available



Roche Products Limited
PO Box 2LE, 15 Manchester Square, London W1A 2LE

J486012/577

Many General Practitioners are paying more than they need for their motor insurance.

Many Companies add 30% to a General Practitioners premium. This extra is normally paid by business men. We have obtained rates from a reputable insurer without the normal extra.

Why it pays to shop around for your motor insurance.

- *Recent legislation gives you complete protection against any insurance company failure.
- *Changing insurance companies involves no cost or effort on your behalf.
- *You do not benefit by staying with a single company for many years. You are evaluated on the basis of your claims record not on the length

of time that you have been a policyholder.

- *Few people need reminding about the effects of inflation on their insurance premiums in recent years. However, inflation has also created a situation where the value offered by different major insurance companies to a policyholder can vary considerably year by year.

The enormous range of quotations available make the services of a specialised broker more vital.

- *We normally use a computer which stores details of the rates charged by all the reputable insurers and which we programme to find the best quotation for your particular circumstances. This also enables us to send you the information within seven days.

complete service, advise you concerning any claims, arrange foreign travel insurance and so on.

- *When you have to renew again next year we will check your premium again automatically and send you a reminder.

- *If you are insured through us we will give you a

It may well pay you to take advantage of our free service.

- *Even if you are not due to renew your policy in the next four weeks but would like to take advantage of our service, fill in the coupon completely and send it to us. We will automatically contact you before your next renewal.

- *If you are due to renew your policy in the next four weeks fill in the form below and send it off to us.

Or -just telephone 01-398 6334

QUESTIONNAIRE

Please complete fully and return to Motorplan (Insurance Consultants) Limited, 42/45 New Broad Street, London EC2 M1QY.

If your insurance is due for renewal within the next 10 days please telephone 01-398-6334 and let us have the information required below.

Name Age Country of Birth

Address Telephone No. (Day) (Night)

Occupation Current No claims bonus 30%, 33%, 40%, 50%, 55%, 60% or 65%.

Name of present insurance company (not agent) Expiry date of present insurance

Drivers (1) Insured only driving (2) Insured and Spouse/Any driver. Type of licence Number of years held

Make and model of car Cubic capacity Estimated value Age of Car

Have any of the drivers ever had any accidents Yes/No: Any convictions Yes/No: Any disabilities Yes/No.

If any answer YES give details on a separate note.

On receipt of this questionnaire we will send you, where possible, a quotation which is subject to a proposal form.

Completion and return of this questionnaire does not bind you to complete the insurance

offered and does not form the basis of any contract.

Signature Date

Motorplan Insurance Consultants Ltd., 42/43 New Broad St., London EC2M 1QY.

CLASSIFIED ADVERTISEMENTS AND NOTICES

Classified advertisements are welcomed and should be sent to: Mr Mike Fulton, Advertisement Director, *The Journal of the Royal College of General Practitioners*, Update Publications Ltd., 33/34 Alfred Place, London WC1E 7DP. Copy must be received by 1st of the month preceding the month of issue to ensure inclusion. Every effort will be made to include advertisements received after this date but publication cannot be guaranteed and the advertisement may have to be held over to the following issue.

The charge for space in this section is £5.75 per single column centimetre, plus 25p if a box number is required. Fellows, members and associates of the Royal College of General Practitioners may claim a ten per cent reduction.

The inclusion of an advertisement in this Journal does not imply any recommendation and the Editor reserves the right to refuse any advertisement. All recruitment advertisements in this section are open to both male and female applicants.

WEST BERKS.

Sixth Partner required to fill retirement vacancy, Group Practice. December 1978. Urban and Rural Practice. Purpose-built premises. Full ancillary staff. General-practitioner Hospital and Maternity beds with full access to all departments. Anaesthetic experience an advantage.

Please contact Dr B. M. Phillips, Newbury 40160, Berkshire.

Kensington and Chelsea and Westminster Area
Health Authority

ST CHARLES' HOSPITAL EXMOOR STREET, LONDON W10

APPLICATIONS are invited for two vacancies in the Senior House Officer grade at this busy, acute General Hospital from 1 July 1978. The scheme is approved by the Department of Health and Social Security and is recognized for the MRCGP. Accommodation will be available. A period of six months will be spent in each of the Departments of General Medicine, Paediatrics, Geriatrics, and Obstetrics and Gynaecology during the first two years, followed by placement throughout the third year in a carefully selected general practice in either the North or West London area. Additional clinical assistantship training will be provided in Venereology, Dermatology, ENT, and FPA work. Work in Obstetrics and Gynaecology will be undertaken at the Hillingdon Hospital. The exceptional study facilities at St Charles' include a Postgraduate Medical Centre and fine medical library. Throughout the three years there will be a weekly half-day release course in general practice topics. During the final year an additional attachment will be made in a unit specializing in Psychiatry.

APPLICATIONS AND JOB DESCRIPTIONS are obtainable from and returnable to the District Personnel Officer, St Mary's Hospital, Praed Street, London W2.

HAVE YOU READ ANY GOOD ARTICLES LATELY?

IAN STOKOE COMPETITION

Applications are sought for the second Ian Stokoe Memorial Award of £100.

The aim of the Award is to commemorate the memory of Dr Ian Stokoe. The competition is to encourage high standards in the preparation of material for publication in written form by any Fellow, Member or Associate of the Royal College of General Practitioners. The Award will be made with particular reference to the quality and aptness of the use of illustrations in relation to the text.

You may enter yourself for the competition; alternatively you may bring to the notice of the adjudicators by submitting at least one copy of a reprint of an article from the *Journal of the Royal College of General Practitioners* or any other medical publication which has appeared during the last three years. The person whose name is submitted must be either an Associate, a Member or a Fellow of the College. He or she must be either the sole author or a joint author of the article. If a reprint is not available, then a *full* reference to the article may be sufficient.

Further details can be obtained from:

Professor Richard Scott
Department of General Practice
University of Edinburgh
Livingstone House
39 Cowgate
Edinburgh EH1 1JS.

The competition will close on 31 July 1978.

Opinions expressed in *The Journal of the Royal College of General Practitioners* and the supplements should not be taken to represent the policy of the Royal College of General Practitioners unless this is specifically stated.



COLLEGE ACCOMMODATION

Charges for college accommodation are reduced for members (i.e. fellows, members and associates). Members of overseas colleges are welcome when rooms are available. All charges for accommodation include breakfast and are subject to VAT. A service charge of 12½ per cent is added. Members are reminded that children under the age of 12 years cannot be admitted and dogs are not allowed. Residents are asked to arrive before 18.30 hours to take up their reservations.

From 1 January 1977, charges are:

	Members	Others
Single room	£5	£9
Double room	£9	£14
Flat 1	£11	£14
	(£70 per week)	(£90 per week)
Flat 3	£12	£15
	(£75 per week)	(£95 per week)

Charges are also reduced for members hiring reception rooms compared with outside organisations which apply to hold meetings at the College. All hirings are subject to approval and VAT is added.

	Members	Others
Long room	£30	£40
Damask room	£20	£30
Common room and terrace	£20	£30
Kitchen	—	£10
Dining room	£10	£10

Enquiries should be addressed to:

**The Accommodation Secretary,
The Royal College of General Practitioners,
14 Princes Gate, Hyde Park,
London SW7 1PU.
Tel: 01-584 6262**

Whenever possible bookings should be made well in advance and in writing. Telephone bookings can be accepted only between 9.30 hours and 17.30 hours on Mondays to Fridays. Outside these hours, an Autophone service is available.

TRAINING IN GENERAL PRACTICE AND COMMUNITY MEDICINE

The Ipswich trainers are inviting applications for one-year traineeships in General Practice, from doctors who will have completed their pre-registration year; three places will be earmarked for candidates who are considering a career in Community Medicine. A day-release course, which will include some epidemiology, statistics, and other relevant subjects, has been planned in collaboration with the Department of Community Medicine, University of Cambridge.

For details of the course and the available training practices, please contact the Course Organizer:

Dr F. A. F. Biddle
The Erica Centre
The Ipswich Hospital
Heath Road Wing
Ipswich,

or telephone (evenings) Ipswich 58992.

Information about instruction in community medicine can be obtained from Professor R. M. Acheson, Department of Community Medicine, University of Cambridge, Addenbrooke's Hospital, Hills Road, Cambridge. Telephone Cambridge 45171 ext. 395. Appointments will be made by mutual agreement between the applicant, the chosen Training Practice and a representative community physician.

STEYNING, WEST SUSSEX. Excellent opportunity, in historic market town beneath South Downs, for preferably vocationally trained Practitioner to join four doctor training practice. Required 1 January 1979 due to retirement of senior partner. Semi-rural area. Highly qualified attached staff, working from fully equipped single practice health centre. LA and Hospital appointments held. Excellent schools, recreational, cultural, and sporting facilities in area. Anyone with a special expertise or medical interest would be welcome. Ample holidays and possible sabbatical leave. Parity three years. Applications with full curriculum vitae to Drs Dingemans, Frank, O'Donnell, and Boger, The Health Centre, Tanyard Lane, Steyning, Sussex.

INDEX TO ADVERTISERS

	page		page
Allen and Hanburys Ltd		Leo Laboratories Ltd	
<i>Beconase</i>	262	<i>Fucidin</i>	outside back cover
<i>Trandate</i>	271/272	Portman Motor Insurance	302
Beecham Research Laboratories		Roche Products Ltd	
<i>Talpen</i>	292	<i>Libraxin</i>	297
Bencard Ltd		Schering Chemicals Ltd	
<i>Amoxil</i>	inside front cover	<i>Cyclo-Progynova</i>	260
Dales Pharmaceuticals Ltd		Searle Laboratories	
<i>Millophyline</i>	277	<i>Aldactide/Aldactone</i>	278/279
DDSA Pharmaceuticals Ltd		Smith Kline & French	
<i>Remnos</i>	282	<i>Tagamet</i>	258
Duncan Flockhart & Co Ltd		The Wellcome Foundation Ltd	
<i>Paramol 118</i>	301	<i>Seprin</i>	286/287

**Somebody has prescribed
30,000,000
tubes of fucidin...**



**is it
YOU?**

In boils, dirty wounds, impetigo and most other soft tissue bacterial infections- Fucidin works.

Topical Fucidin is available as Fucidin Gel, Fucidin H Gel, Fucidin H Ointment, Fucidin Tulle and Caviject... and of course

fucidin^{*} ointment

Full prescribing information available from

 **Leo Laboratories Limited,
Hayes Gate House, Hayes, Middx.**

*Fucidin is a trade mark for sodium fusidate.