

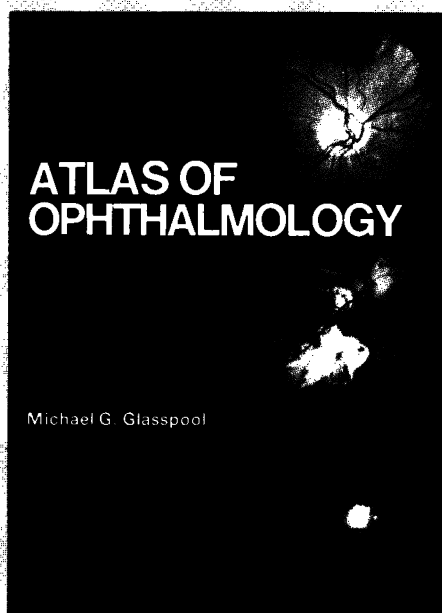
Atlas of OPHTHALMOLOGY

Michael G. Glasspool

CONTENTS

Preface

Anatomy and Physiology
Examination of the Eye
Errors of Refraction and
their Correction
The External Eye Part I
The External Eye Part II
The Internal Eye
The Fundus Part I



The Fundus Part II
Trauma to the Eye Part I
Trauma to the Eye Part II
Cataract
Glaucoma
Squint
Congenital Deformities
The Eye in Systemic Disease
Neuro-ophthalmology
Ocular Pharmacology
Index

This book is a full-colour pictorial guide to ophthalmology for the non-specialist. It begins with a description of the basic anatomy and functioning of the eye, and goes on to detail examination, assessment and early diagnosis of ocular conditions and systemic diseases. It illustrates the common and some of the rarer eye conditions encountered by the family physician and casualty surgeon. The illustrations are examples of the typical cases referred to a general ophthalmic clinic.

Medical students, paramedical staff and general physicians will find this an easy reference volume for the more common eye problems that can cause so much doubt and concern.



UPDATE BOOKS

Update Publications Ltd., in association
with MTP Press Limited.

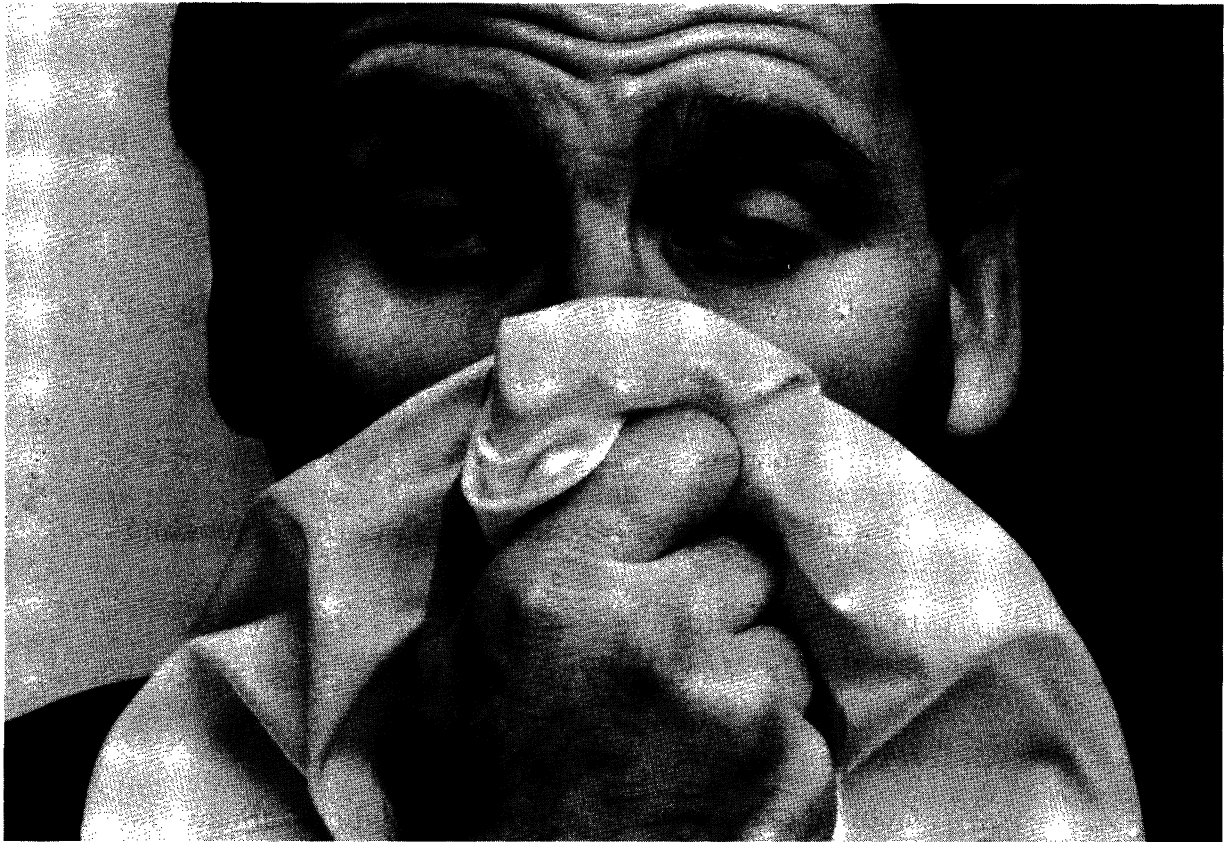
ISBN: 0-85200-434-6

Cheque payable to:
MTP Press Limited Falcon House
Cable Street Lancaster LA1 1PE

£24.95

When a patient comes to you with flu, maybe you should recommend Flora.

Perhaps the best time to start your patients thinking more seriously about their health is when they come to you with some more routine complaint.



It is now widely accepted that changes in diet and lifestyle can dramatically decrease the risk of Coronary Heart Disease developing.

So the best time to recommend Flora is before, not after, any symptoms of CHD present themselves.

Flora is high in essential polyunsaturated fats (*cis-cis* linoleic), because it is made with pure sunflower oil.

Whenever an opportunity arises to recommend ways in which your patients could reduce the CHD risk factors, recommend they change to Flora, too.

Flora. High in essential polyunsaturates.





Half-'Inderal' LA is an 80mg long-acting formulation of the world's most tried and trusted beta-blocker.

It is especially suitable for older patients who may need a lower than usual dosage level.

In addition, this new once-daily regimen can be used to ease the problem of poor compliance in patients currently taking 80mg in multiple doses.

NEW
ONCE DAILY

Half-Inderal LA



80mg propranolol hydrochloride BP in a long-acting formulation.

'Inderal' LA, Half-'Inderal' LA: abridged prescribing information. Presentation 'Inderal' LA: Capsules each containing 160mg propranolol hydrochloride in long-acting formulation. Half-'Inderal' LA: Capsules each containing 80mg propranolol hydrochloride in long-acting formulation. **Dosage** Angina, anxiety, essential tremor, thyrotoxicosis, prophylaxis of migraine: 1 capsule Half-'Inderal' LA, once daily, increased, if necessary, to 1 capsule 'Inderal' LA, once daily and a further increment of Half-'Inderal' LA. Hypertension: 1 capsule 'Inderal' LA, once daily, increased, as necessary, in increments of Half-'Inderal' LA. (In appropriate patients e.g., the elderly, starting dose is 1 capsule of Half-'Inderal' LA, once daily). **Contraindications** Heart block. Bronchospasm. Prolonged fasting. Metabolic acidosis. **Precautions** Untreated cardiac failure. Brady-

cardia. Modification of tachycardia of hypoglycaemia. Transference from, or discontinuance of, clonidine. Prescription of Class I antidysrhythmic agents. Co-administration with verapamil. Anaesthesia. Pregnancy. **Adverse Reactions** Cold extremities, nausea, insomnia, lassitude and diarrhoea are usually transient. Isolated cases of paraesthesia of the hands; rashes and dry eyes have been reported with beta-blockers. Consider discontinuance if they occur. Beta-blockers should be withdrawn gradually. **Overdosage** See data sheet. **Basic NHS cost** 28-day calendar pack, 'Inderal' LA £6.66, Half-'Inderal' LA £4.48. **PL Nos.** 'Inderal' LA 0029/0128, Half-'Inderal' LA 0029/0173. Full prescribing information is available from: Imperial Chemical Industries PLC, Pharmaceuticals Division, Alderley House, Alderley Park, Macclesfield, Cheshire SK10 4TF. *Trademark.

CLASSIFIED ADVERTISEMENTS AND NOTICES

Classified advertisements are welcomed and should be sent to: Advertising Department, *The Journal of the Royal College of General Practitioners*, Update Publications Ltd., 33/34 Alfred Place, London WC1E 7DP. Copy must be received six weeks before the 1st of the month of issue to ensure inclusion. Every effort will be made to include advertisements received after this date but publication cannot be guaranteed and the advertisement may have to be held over to the following issue.

The charge for space in this section is £6.35 per single column centimetre, plus 30p if a box number is required. Fellows, members and associates of the Royal College of General Practitioners may claim a 10 per cent reduction. Replies to box numbers should be sent to the Advertising Department, Update Publications Ltd., with the box number on the envelope.

The inclusion of an advertisement in this *Journal* does not imply any recommendation and the Editor reserves the right to refuse any advertisement. All recruitment advertisements in this section are open to both men and women.

Opinions expressed in *The Journal of the Royal College of General Practitioners* and the supplements should not be taken to represent the policy of the Royal College of General Practitioners unless this is specifically stated.

SCHOOL FEE PLANNING SERVICE

Individually designed plans to meet your requirements. Using capital or income or a combination of both.

Immediate Fee Plan now available.

Please telephone 0935 77471 or write to Medical Insurance Consultants, Freepost, 9 Princes Street, Yeovil, BA20 1YR.

THE BALINT SOCIETY RESIDENTIAL WEEKEND AT PEMBROKE COLLEGE, OXFORD

Friday 14 – Sunday 16 September 1984

Open to all general practitioners who are interested in a live experience of Balint work. Section 63 applied for. Application forms from: **The Hon. Sec. Dr Peter Graham**, 149 Altmere Ave, London E6 2BT.

PARTNERSHIP REQUIRED

Vocationally trained, British male doctor, age 28, MRCP, eligible for obstetric list, seeks partnership, late 1984 or early 1985. Presently working in rural practice in New Zealand. For CV and references reply to: **Dr David P. Starbuck**, Catlins Medical Centre, PO Box 1, Owaka, South Otago, New Zealand.

SURGERY MORTGAGES FOR THE MEDICAL PROFESSION

Up to 100 per cent with very attractive fixed rates of interest.

Up to 20 years Repayment Term.

Please Telephone 0935 77471 or write to Medical Insurance Consultants, Freepost, 9 Princes Street, Yeovil BA20 1YR.

Educating the Educators

A one-day symposium and workshop focusing on education for inter-professional collaboration in health care

Friday 21 September 1984

- Designed for medical, nursing and social work staff engaged in post-qualifying education
- Opportunities to compare, evaluate and improve learning materials
- Small group workshops, working on planning a short course
- Speakers include **Dr John Horder**, Past President Royal College of General Practitioners and **Mrs Juliet Cheetham**, Fellow of Green College Oxford
- Based at the Polytechnic's Conference Centre, an attractive and comfortable setting close by the M25 in North London

Course fee: £25 (GPs covered by Section 63: £5 to cover cost of meals).

Further information and reservations: **Mrs Ann Loxley**, Middlesex Polytechnic, Queensway, Enfield, Middlesex EN3 4SF. Telephone 01-804 8131, ext. 384.

Middlesex Polytechnic

MRCGP CANDIDATES

New practice exams now available. Two MCQ papers (120 questions) covering the new subject areas as required by the Royal College. (This includes social and legal aspects, epidemiology, statistics and practice organization.) Answers and detailed teaching explanations provided together with computer sheets and free marking service. MEQ and TEQ papers have sample answers, explanations, marking schedules references and practical examination advice. Also hints on log diary, oral and reading suggestions. Send cheque now for £16.50 plus 65p p & p.

PASTEST

Dept. GP PasTest Service, PO Box 81,
Hemel Hempstead, Herts HP1 1UR
Tel. Hemel Hempstead (0442) 52113

NEW ZEALAND PRACTICE EXCHANGE

CHRISTCHURCH, NZ: Garden city, 300,000 pop., same latitude Nice, 1 h mountains and skiing, all water sports, numerous golf courses, salmon and trout fishing, ethnic restaurants, professional theatre, symphony orchestra, arts centre, excellent schools.

Two UK graduates wish to exchange: houses, cars, small group practices, obstetrics preferred, excellent rosters, one 1985 and one 1986. Anywhere in UK, up to one year.

Please reply to **Drs Bob Bigge/Alex Bartle, 26 College Avenue, Christchurch 5, NZ.** Tel: Christchurch 556-074.

NOTES FOR LECTURERS

Lecturing is an activity which general practitioners are undertaking more and more as undergraduate medical education, vocational training and continuing education slowly expand. However, despite the quantity of lecturing which occurs, there are still occasions when audiences are left feeling that the content of the lecture was spoilt by its presentation.

Notes for Lecturers, a booklet compiled by Clive Froggatt and David Pendleton, provides a few clear guidelines appropriate for all lecturers to help them make the best of their material and avoid some of the common pitfalls. It includes advice on both text and audiovisual aids.

Notes for Lecturers can be obtained from the Publications Sales Office, Royal College of General Practitioners, 8 Queen Street, Edinburgh EH2 1JE, price £1.00 including postage. Payment should be made with order.

COMPUTERS IN PRIMARY CARE

Occasional Paper 13

Computers are coming. More and more general practitioners are becoming interested in the possibility of computerizing various aspects of their record systems in general medical practice in the United Kingdom.

Computers in Primary Care is the report of a working party of the Royal College of General Practitioners which describes the possibilities currently available and looks into the future, discussing both technical and financial aspects.

The members of this working party have between them considerable experience of using computers in general practice. Together they summarize the experience and philosophy which they have acquired which enables them to put forward a series of conclusions and recommendations for the future.

Computers in Primary Care, Occasional Paper 13, is available now, price £3.00 including postage, from the Publications Sales Office, Royal College of General Practitioners, 8 Queen Street, Edinburgh EH2 1JE. Payment should be made with order.

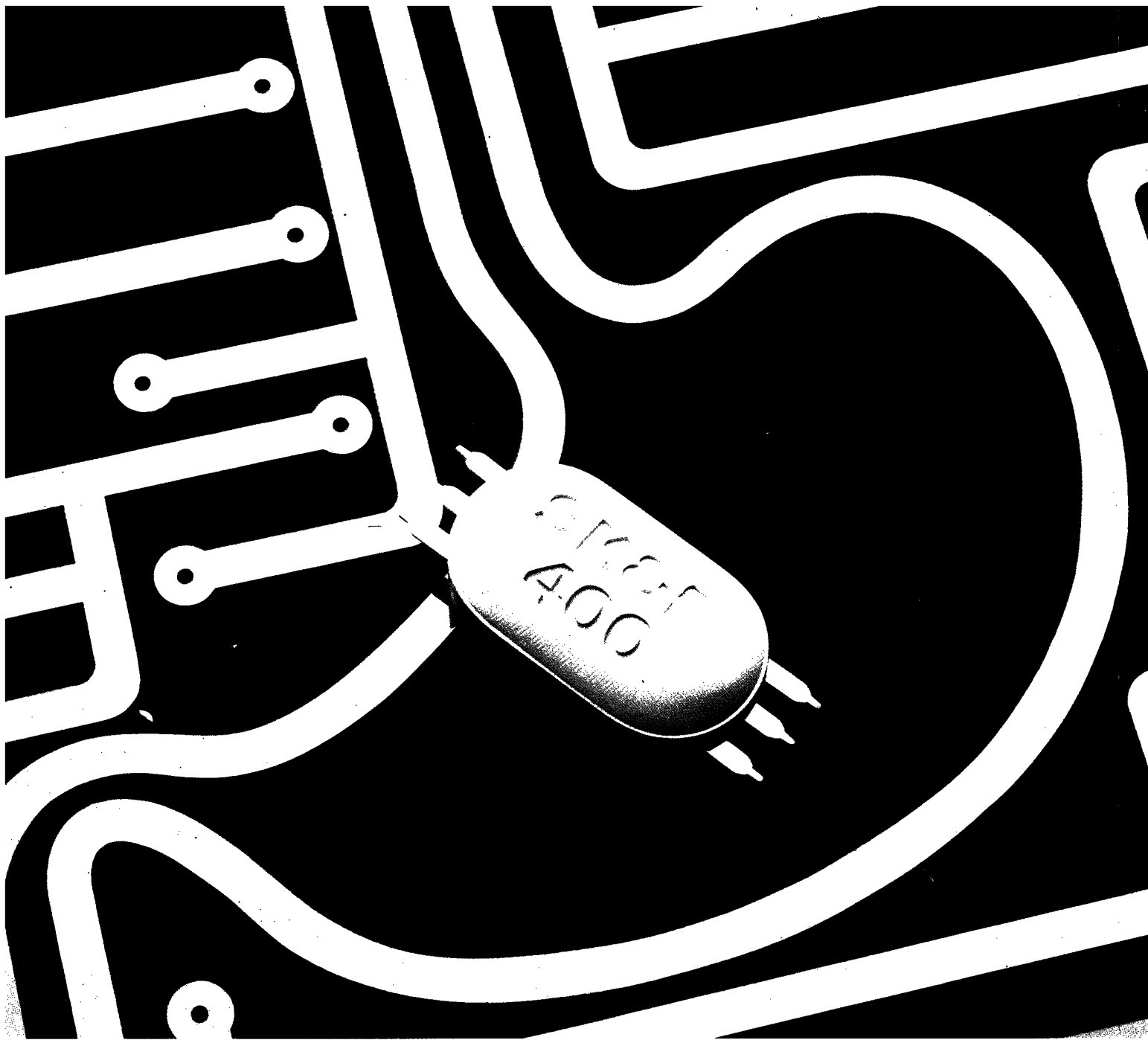
GENERAL PRACTITIONER HOSPITALS

Occasional Paper 23

General Practitioner Hospitals is the report of a working party of the Royal College of General Practitioners which reviews the history and literature on this subject.

A service including 350 hospitals providing care for over two million patients and involving about a sixth of all British general practitioners merits considerable attention and this document guides readers towards several of the main issues which are as yet unresolved.

General Practitioner Hospitals, Occasional Paper 23, can be obtained from the Publications Sales Office, Royal College of General Practitioners, 8 Queen Street, Edinburgh EH2 1JE, price £3.00 including postage. Payment should be made with order.



Gastro-technology

Tagamet

cimetidine
acid controlled

Prescribing Information. Presentations 'Tagamet' Tablets, PL 0002/0092, each containing 400 mg cimetidine. 56, £16.61. 'Tagamet' Tablets, PL 0002/0063, each containing 200 mg cimetidine. 500, £74.15. 'Tagamet' Syrup, PL 0002/0073, containing 200 mg cimetidine per 5 ml. 500 ml, £20.43. **Indications** Duodenal ulcer, benign gastric ulcer, recurrent and stomal ulceration, oesophageal reflux disease. Other conditions where reduction of gastric acid is beneficial: prophylaxis of stress-induced gastrointestinal haemorrhage and of acid aspiration (Mendelson's) syndrome; malabsorption and fluid loss in short bowel syndrome. Zollinger-Ellison syndrome. **Dosage Usual dosage:** Adults. *Duodenal ulcer*, 400 mg b.d. with breakfast and at bedtime, or 200 mg t.d.s. with meals and 400 mg at bedtime (1.0 g/day) for at least 4 weeks. To prevent relapse, 400 mg at bedtime or 400 mg morning and at bedtime for at least 6 months. *Benign gastric ulcer*, 200 mg t.d.s. with meals and 400 mg at bedtime (1.0 g/day) for at least 6 weeks. *Oesophageal reflux disease*, 400 mg t.d.s. with meals and 400 mg at bedtime (1.6 g/day) for 4 to 8 weeks. *Prophylaxis of stress-induced gastrointestinal haemorrhage*, up to 2 g a day, divided, to maintain intragastric pH above 4. *Prophylaxis of acid aspiration syndrome*, 400 mg 90-120 mins before induction of general anaesthesia. 400 mg at start of labour then 200 mg 2-hourly as necessary, suggested maximum 1.6 g. Do not use 'Tagamet' syrup. *Zollinger-Ellison syndrome*, up to 2 g a day, divided. *Recurrent and stomal ulceration and short bowel syndrome*, 200 mg t.d.s. and 400 mg at bedtime (1.0 g/day). *N.B. For full dosage instructions see Data Sheet.* **Cautions** Impaired renal function: reduce dosage (see Data Sheet). Potentiation of oral anticoagulants, phenytoin and theophylline (see Data Sheet). Prolonged treatment: observe patients periodically. Exclude malignancy in gastric ulcer. Care in patients with compromised bone marrow (see Data Sheet). Avoid during pregnancy and lactation. **Adverse reactions** Diarrhoea, dizziness, rash, tiredness. Rarely, mild gynaecomastia, reversible liver damage, confusional states (usually in the elderly or very ill), interstitial nephritis, acute pancreatitis. **Legal category** POM. 9.12.83.

Smith Kline & French Laboratories Limited, Welwyn Garden City, Hertfordshire AL7 1EY. © 1984 Smith Kline & French Laboratories Limited
'Tagamet' is a trade mark

SK&F