

HRT
without
strings

Climesse

Marfan Association UK

Please see our new website:

'Marfan Syndrome and Overlapping Disorders'

PATRONS:-

Sir John Gielgud

Sir Magdi Yacoub FRCS

BHF Professor of Cardiothoracic Surgery

Rochester House,
5, Aldershot Road,
Fleet, Hampshire GU13 9NG

CHARITY No. 802727
(Established in 1984)

Tel: 01252 810472 Fax: 01252 810473

Ans: (Reg. Office) 01252 617320

HELP US TO HELP THOSE WITH MARFAN SYNDROME

**Marfan Syndrome is in 75% of cases an inherited disorder of
connective tissue, 25% occurring as new mutations.**

There is a 50/50 chance with each pregnancy that the gene may be inherited.

The incidence is thought to be greater than 1 in 5,000.

* SALIENT FEATURES *

Ocular:

Subluxation or dislocation of lens, myopia and unstable
refraction, detachment of retina, strabismus, glaucoma.

Dental:

High-arched plate, crowding of teeth.

Cardiovascular:

Dilatation of ascending and sometimes descending aorta,
incompetence of aortic and mitral valves, aneurysm and
dissection of aorta.

Skeletal:

Tall thin physique, disproportionately long limbs, fingers
and toes, lax ankles, flat feet, spinal curvature, abnormally shaped
chest (with pigeon or funnel deformity), armspan usually greater
than height, joint hypermobility or contractures, stretch marks
(striae).



Simon - 9 years

DO YOU HAVE PATIENTS WITH THIS HIDDEN LIFE - THREATENING DISORDER?

IT WAS FIFTEEN YEARS BEFORE SIMON WAS FINALLY DIAGNOSED

DO YOU CHECK FAMILY HISTORY?

A CLINICAL GUIDE IS AVAILABLE FOR YOU, TOGETHER WITH A SUPPORT
PACK FOR YOUR PATIENTS

Advancing methodology in general practice research

Thursday 26th and Friday 27th March, 1998

Durham Castle, Durham

An opportunity to re-evaluate our research methods and learn about new methods for general practice research. The programmes includes:

The research questions services GPs really want answered and the use of reviews and guidelines in general practice

Dr. Iona Heath, Caversham Group Practice, Kentish Town Health Centre, London.

Traditional medical research methods: RCT, case control, observational studies, their use and application and limits in general practice research

Professor Mike Pringle, Department of General Practice, The Medical School, Nottingham

Outcome measures in general practice *Professor Pali Hungin, Director, NoReN, Stockton on Tees*

n=1 methods, an introduction *Professor Terje Johannessen, Department of Community Medicine and General Practice, University of Trondheim, Norway*

Bayesian statistics, an introduction *Professor R J Lilford, Health Services Research, University of Birmingham*

Qualitative research developed and used commercially *Mr Tim Bowles, IRI Inforscan, Bracknall, Berks*

Nominal Group Techniques *Dr Colin Bradshaw, GP South Shields*

The use of the Balint approach in general practice research *Professor Peter Campion, Academic Department of Primary Care Medicine, University of Hull*

An introduction to "chaos" and complexity theory and its relevance to general practice research. *Dr David Byrne, Department of Sociology and Social Policy, University of Durham*

The use of narrative in general practice research. *Dr Ruth Bridgewater, Department of Primary Health Care, University of Newcastle*

Unpacking validity and reliability *Dr David Armstrong, Department of General Practice, UMDS, London*

The use of historical research methods: using document and records. *Dr Mark Jackson, Wellcome Unit for History of Medicine, University of Manchester.*

Ethnography, an introduction for general practice research *Dr Andrew Russell/Dorothy Hannis, Department of Anthropology, University of Durham*

Uncertainty in General Practice Research: a theological perspective *The Rt Rev. David Jenkins, Durham*

General Practice Research: Purpose, Paradigms and Politics *Professor Marshall Marinker, London*

Dinner in Durham Castle - Thursday 26th March, 1998

"A taste of Northumbria"

If you wish to register for this important event, please contact NoReN, The Health Centre, Sunningdale Drive, Eaglescliffe, Stockton on Tees, TS16 9EA

Tel: 01642 789026 Fax: 01642 791020

Fee: Two Days = £175 (Existing NoReN Members = £150) One Day = £120 (Existing NoReN Members = £100)

The fee includes lunch on the Thursday/Friday and Thursday evening dinner. Accommodation can be booked direct with Durham Castle and there are also many hotels nearby.

Institute of Child Health

and Great Ormond Street Hospital for Children NHS Trust

UNIVERSITY COLLEGE LONDON MEDICAL SCHOOL

How to practise evidence-based child health

Training courses

26/27/28 November 1997

27/28/29 May 1998

The courses aim to help practitioners use the best available evidence in their clinical & policy decisions.

This is an intensive 3 day course consisting of plenary seminars, small group problem-solving & appraisal sessions using examples in child health, and practical sessions on how to search the scientific literature. Key features include, multiprofessional group learning, a high tutor-participant ratio, opportunities throughout the course for 'hands-on' access to the internet and scientific literature, and techniques for formulating and prioritising questions and dealing with uncertainty.

Who should attend?

The course is based on clinical practice and policy problems in child health and is relevant to professionals from all sectors of the health service and others whose work relates to child health.

e.g.: paediatricians, purchasers, health visitors, nurses, GPs, researchers from consumer groups, therapists and managers.

Previous experience in using research evidence to inform decisions is an advantage but not essential.

Cost:

£300 (catering included)

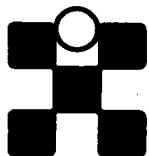
A limited number of discretionary reductions are available for self-funded participants.

Further Details:

Administrator, Centre for Evidence-Based Child Health, 30 Guildford Street, London WC1N 1EH.

Tel: 0171 242 9789 ext. 2606. Fax: 0171 831 8233. E-mail: cebch@ich.ucl.ac.uk





DOWN'S SYNDROME ASSOCIATION

A Registered Charity

The Down's Syndrome Association is the only national charity, covering England, Wales and Northern Ireland, which works exclusively with people with Down's syndrome. It exists to provide support, information, advice and counselling to people with Down's Syndrome, their parents/carers, families and those with a professional interest. The Association also funds research designed to enhance the lives of people with Down's syndrome.

The Association strives to change negative perceptions about Down's syndrome by highlighting the potential that these people have to live fulfilling lives and to make a worthwhile contribution to their communities.

Founded in 1970, the charity has a network of 100 volunteer parent-led branches and groups, a national office and resource centre in London and resource centres in Birmingham, Belfast and Cardiff.

For further information please contact Carol Boys, Chairman, Down's Syndrome Association, 155 Mitcham Road, London SW17 9PG. Tel: 0181 682 4001 Fax: 0181 682 4012.



24-28 NOVEMBER 1997
Quarry Bank Mill, Cheshire

5 DAY GP UPDATE COURSE A NEW EDUCATIONAL APPROACH

A premium course away from the standard lecture format with a strong emphasis on problem-based learning.

Update your clinical knowledge and benefit from a real opportunity to question and discuss General Practice problems using full case studies. An exceptional opportunity to meet and discuss problems with fellow GPs and Consultants in a relaxed setting.

**Timetable includes: Paediatrics • Palliative Medicine
Psychiatry/Depression • Urology/Renal Medicine
Diabetes/Endocrinology (30 hrs PGEA)**

Price £295 (+ VAT) Daily attendance £65 (+ VAT)
Includes hot lunch and all refreshments.

Tel. Pastest on: 01565 755226 for further details.



West of Scotland
Postgraduate Medical
Education Board

4 types : each one

- 30 mins each

- different candidate

- 2 examiners

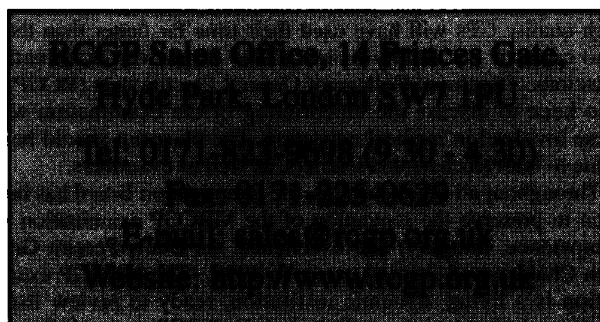
£50 each

CHRISTMAS CARDS FROM RCGP

After much demand RCGP Sales Office will this year be producing a College Christmas Card brochure

Supplying five different designs and a choice of festive messages we are sure there will be something for everyone.

Look out for the free brochure in next month's Journal.



Healthworks

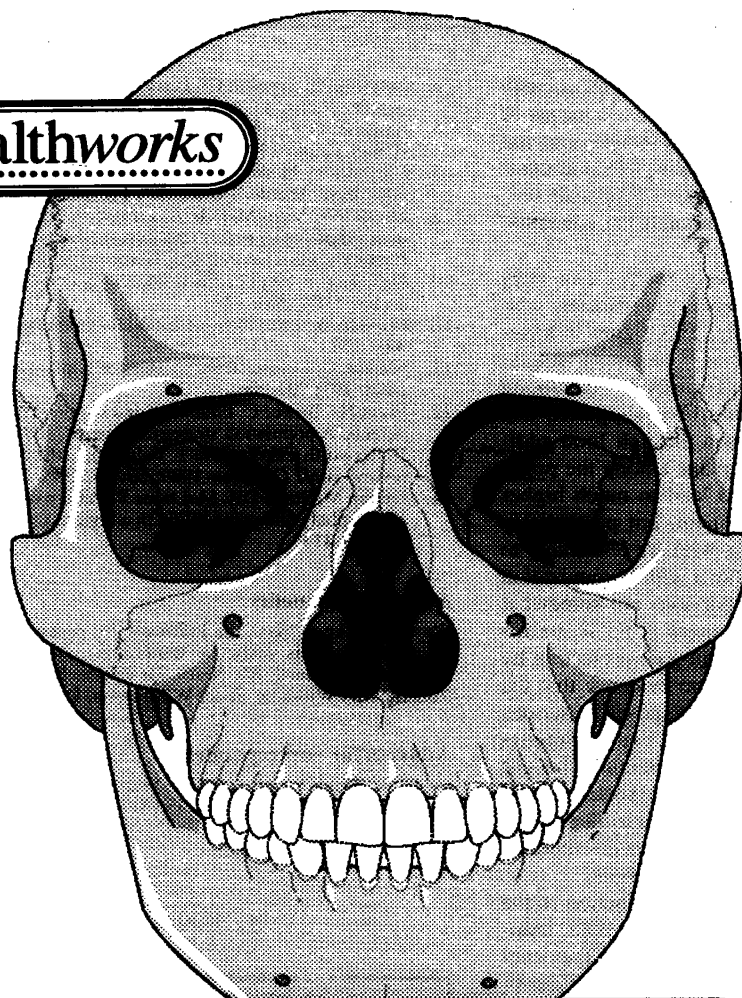


Illustration is courtesy of TeachPool, Publishers of LifeArt: taken from Super Anatomy 1

**Free
Medical
CD ROM Catalogue
Over 600 Titles**

Please send me the latest catalogue :

NAME	ORGANISATION
ADDRESS	
POSTCODE	COUNTRY
TEL	FAX
E-MAIL	AREA OF INTEREST

E-mail: sales@d-access.demon.co.uk

Tel: +44 (0)113 243 9899 Fax: +44 (0)113 242 7782

Post: Healthworks, 30-38 Dock Street, Leeds LS10 1JF England

Internet: <http://www.healthworks.co.uk>

AIDS

Allergies

Anatomy

Anaesthesia

Cardiology

Clinical Medicine

Dentistry

Dermatology

Emergency Medicine

Gastroenterology

Haematology

Immunology

Infectious Diseases

Internal Medicine

Microbiology

Neurology

Nursing

Obstetrics

Oncology

Ophthalmology

Paediatrics

Pathology

Pharmacology

Radiology

Rheumatology

Surgery

Toxicology

Urology

Scandinavian Journal of Primary Health Care

Scandinavian Journal of Primary Health Care is the leading scientific international journal of primary health care in Scandinavia. The journal is published quarterly in English.

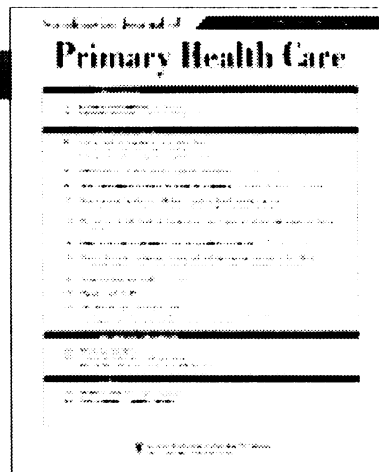
The journal aims to present balanced publication of:

- Clinical scientific articles of importance to daily clinical work, including prevention in primary health care with special emphasis on general practice.
- Articles on epidemiology and health service research.
- Articles that can contribute to evolution and refinement of the scientific methods necessary for research in primary health care.

Order your subscription from the publisher,

Scandinavian University Press, P.O. Box 2959 Tøyen, N-0608 Oslo, Norway.
Tel.: +47 22 57 54 00. Fax: +47 22 57 53 53. E-mail: subscription@scup.no or

Scandinavian University Press North America,
875 Massachusetts Avenue Ste. 84, Cambridge, MA 02139, USA.
Toll-free tel.no. in US: (800) 498 2877, Fax: (617) 354 6875.



Editor-in-Chief:

Professor Calle Bengtsson,
Department of General Practice,
University of Göteborg, Sweden.

National Editors:

Jakob Kragstrup and
Jørgen Lous, Denmark.
Matti Klockars, Finland.
Jóhann Ág. Sigurdsson, Iceland.
Geir Jacobsen, Norway.
Ingvar Krakau, Sweden.

SCANDINAVIAN
UNIVERSITY PRESS



Oslo, Stockholm,
Copenhagen, Oxford, Boston

ORDER FORM

Please enter my/our subscription to **Scandinavian Journal of Primary Health Care**, starting with No. 1, 1997. Four issues per year. Postage included. Supplements are distributed free to subscribers. Prepayment required. Sample copies available upon request.

- ☐ Institutions US\$ 158 (In Scandinavia, Norwegian kroner 870,-)
☐ Individuals US\$ 83 (In Scandinavia, Norwegian kroner 420,-)

PLEASE TICK ONE BOX

☐ Cheque enclosed ☐ Send invoice ☐ VISA ☐ Eurocard ☐ Diners ☐ AmEx ☐ Mastercard

Card No. Expiry date:

Please make the cheque payable to Scandinavian University Press and staple it to your order form.

Name/Address:

Signature: Date:

CLASSIFIED ADVERTISEMENTS

Classified Advertisements are welcomed and should be sent to: Maria Phantis, Royal College of General Practitioners, 14 Princes Gate, Hyde Park, London SW7 1PU. Telephone: 0171 - 581 3232. Fax: 0171 - 225 - 0629. Copy must be received three weeks before the 1st of the month of issue to ensure inclusion. Every effort will be made to include advertisements received after this date but publication cannot be guaranteed and the advertisement may have to be held over to the following issue. The publisher will not be responsible for any error in the insertion of, or omission to insert, any advertisement. The charge for space in this section is £15.00 per single column centimetre, plus £10.00 if a box number is required, plus VAT at 17.5%. Fellows, Members and Associates of the Royal College of General Practitioners may claim a 10% reduction. Replies to box numbers should be sent to the above address, with the box number on the envelope. The inclusion of an advertisement in this *Journal* does not imply any recommendation and the Editor reserves the right to refuse, amend or withdraw any advertisement without explanation. All recruitment advertisements in this section are open to both men and women.

COURSES/CONFERENCES

RCGP SEMINAR ON RESEARCH FUNDING (CULYER FUNDING)

**Under the New NHS Research & Development
Support Grant Scheme
28 November 1997 at the RCGP**

The purpose of this event is to enable a sharing of experiences of the first round of bidding for Culyer funding for primary care research and to offer advice and guidance to people wishing to bid for this funding in the next round. The intention is that the experiences of both primary health care bidders and Regional R&D Directorates should be shared and the day will be made up of mixture of short presentations and workshop sessions.

The event is open to all members of the primary health care disciplines and staff from NHS Regional R&D Directorates and will be of interest to anyone wishing to submit bids for Culyer funding for primary care research in the future.

CALL FOR PAPERS: 1998 RCGP RESEARCH SYMPTOMS

Thursday, 21 May 1998 at Regents College, London

The RCGP's Research Co-ordinating Group will be hosting a Research Symposium on Thursday, 21 May 1998. This Symposium will aim to raise the profile of research in general practice, and will cover issues relating to the whole spectrum of research. Some strands will be for the presentation of research projects and others will offer help and advice to researchers. For Call for Papers please contact RCGP Courses.

For further details of any of the above events please contact:

RCGP Courses & Conference Unit, 14 Princes Gate, London SW7 1PU.
Tel: 0171 823 9703 Fax: 0171 225 3047 Email: courses@rcgp.org.uk

RCGP 1997 Christmas Lecture for Schools *Accidental Injuries in Childhood*

**Presented by: Professor Yvonne Carter
MD FRCGP**

Wednesday 17 December 1997

The 1997 Christmas Lecture for Schools is aimed at 15-18 year olds, and will be presented by Professor Yvonne Carter, Chairman of the RCGP Research Network. Entitled "Accidental Injuries in Childhood", the lecture will look at incidence, types, and causes of accidental injuries in childhood and methods of prevention.

Entrance is free but pre-booking is required as places are limited: Please contact:

RCGP Courses & Conference Unit,
14 Princes Gate,
London SW7 1PU.

Tel: 0171 823 9703 Fax: 0171 225 3047 Email:
courses@rcgp.org.uk



Is your Life a Balancing Act?

GPs - come to a two-part residential Workshop

SURVIVING GENERAL PRACTICE Managing Self and Managing Others

We'll help you to:

- ⇒ recognise and overcome stress, both in yourself, and in others
- ⇒ manage change in your Practice - and achieve positive outcomes!
- ⇒ re-evaluate your professional life and take control of its direction

The Dates:

Module One: 27 to 29 October 1997
Module Two: 16 to 18 March 1998

The Cost:

£800.00 which includes accommodation, tuition fees for both Modules and access to individual tutorial support.

The Workshop is PGEA accredited - academic validation is also possible. Bursaries are available to LIZEI GPs practising in South Thames Region (West).

For an Application Form please contact:

Mrs Vanessa Mason, 'Surviving General Practice Workshop'
South Thames (West), Department of Postgraduate GP Education,
2 Stirling House, Stirling Road, Surrey Research Park, Guildford,
Surrey, GU2 5RF

Tel: 01483 579492 Fax: 01483 302163

RCGP Fellowship by Assessment Working Group

FBA Study Day for Candidates

10 am - 4.30pm, Tuesday 18th November 1997

Rutland Square Hotel, Nottingham

Course Leaders: Professor Mike Pringle & Dr. Alison Kay

The Study Day will also be of value to practice managers and new Fellows by Assessment who are interested in becoming FBA Advisers and Assessors. There will be opportunities for small group discussion, plenary sessions and a video workshop. The final programme will be arranged according to the needs of attenders.

- An application for 5 hours of PGEA accreditation will be submitted.
- The fee will be £55.00 per doctor and £35.00 per practice manager, including lunch and VAT.

**For further information or to reserve a place,
please contact:**

Janet Baily, Vale of Trent Faculty, RCGP,
Dep't of General Practice, Medical School,
Queen's Medical Centre, Nottingham, NG7 2UH
Tel: 0115 970 9391; Fax: 0115 970 9389

UNIVERSITY OF WALES



COLLEGE OF MEDICINE

THE DIPLOMA IN PRACTICAL DERMATOLOGY

Department of Dermatology

This is an extramural structured programme in dermatology designed to equip the general practitioner with a sound practical understanding of skin disease as it presents in practice. The course is divided into three modules each of ten weeks. The fee for each module is £595. There are structured reading and written tasks, integrated with your practice, and audio cassettes.

There are two weekends of clinical instruction held in Cardiff during the year where course participants attend ward rounds, clinical demonstrations and lectures. Continual assessment and a final examination lead to the Diploma in Practical

Dermatology. The next course, organised by the University of Wales College of Medicine will start in April 1998 and is open to all General Practitioners.

For further details and an application form, please contact: Miss Yvonne Morris,
Dermatology Postgraduate Centre,
University of Wales College of Medicine,
Grove Mews, 1 Coronation Road, Birchgrove,
Cardiff CF4 4QY.
Tel: 01222 621952
Fax: 01222 621953
E-mail: MorrisYS@Cardiff.AC.UK

Towards Healthier Doctors:

Shaping an Occupational Health Service for General Practice RCGP - 12 November 1997

The RCGP is organising a one day conference to promote awareness of the need, and stimulate discussion of how to implement an occupational health service for general practice. Workshop sessions will cover:

- How can we develop a comprehensive occupational health service for general practice?
- Working with other organisations?
- How can we help sick doctors?
- Local support networks - what works best?

Delegate Fee (inc VAT): £25.00 PGEA Approved.

Joint RCGP/FPHM/APCMA Conference on Measuring General Practice Friday, 14 November 1997

Why do it, what are the tools, how can we do better, who should be doing it? Explore the future direction of performance in general practice and help shape the way forward. There are a few places still available for this conference - apply early to avoid disappointment.

Conference on Environment and Health - Opportunities in Primary Care King's Fund Urban Primary Care Network and the RCGP Inner City Task Force 20 November 1997

Venue: King's Fund, 11-13 Cavendish Square, London

This Conference is aimed at GPs and other Primary Health Care Practitioners and all those interested in the development of primary care and health communities. It will consider:

- The importance of environmental factors to primary care.
- The implications for practice
- Who can GPs influence and what can they do?

There will be ample opportunity throughout the day for round table discussion about the opportunities in primary care in relation to the environment and health.

Delegate Fee (inc VAT) £75.00. PGEA Approved.

Workshop on Health & Safety at Work: Good Health is Good Practice RCGP: 26 November 1997

This workshop is designed to assist GPs in understanding the key issues for health and safety in the GP Practice, and to highlight the benefits of a pro-active approach to dealing with health and safety matters. There will be opportunities for participants to discuss issues with those involved in inspecting within the health care sector. Speakers will outline methods by which GPs can take a realistic and pragmatic approach to health and safety in the surgery.

Delegate Fee (inc VAT) £70.00. PGEA Approved.

*For further details of any of the above events please contact: RCGP Courses & Conference Unit, 14 Princes Gate, London SW7 1PU.
Tel: 0171 823 9703 Fax: 0171 225 3047 Email: courses@rcgp.org.uk*

Let us help you pass...

Intensive Revision Courses

London September 13/14 or Manchester September 20/21

London 15-19 December

London September 5-7, March 20-22 1998
Manchester September 12-14, April 3-5 1998

Contact us now for further details
PasTest, Dept BG, FREEPOST, Knutsford, Cheshire, WA16 7BR

TEL: 01565 755226 **PASTEST** FAX: 01565 650264

RECENT ADVANCES IN PRACTICE

5 Days PGEA. 17th - 21st November 1997

Courtyard by Marriott, Tong Village,
between Leeds & Bradford

Topics include:-

Monday - Heart Disease/Commissioning

Tuesday - Diabetes/Psychosis/Biochemistry

**Wednesday - Gastro-Intestinal
Medicine/Computers/Internet**

Thursday - Pulmonary Disease

**Friday - Viruses/Vaccination/Plastic Surgery/
Peripheral Vascular Disease**

BOOK NOW FOR THIS POPULAR COURSE

£250 (or £60 per day)

Send for Brochure:

**Mrs Betty Sheldon, 4 Station Road, Esholt,
Shipley, West Yorkshire, BD17 7QR**

Tel:- 01943 877388 Fax: 01943 877204

CATALYSTS FOR CHANGE IN PRIMARY CARE



*New Roles for Community Based
Healthcare Organisations*

A One Day Conference

THURSDAY 23 OCTOBER 1997

The Royal College of Surgeons of England, London

**Emerging Primary Care Organisations
'Intermediate care'**

New models of governance

New style community hospitals

Changing the pattern of consultant services

Primary Healthcare Team led services

Health and Social Services - forces for convergence

Details from:

Harrogate Public Sector Management Centre

Tel: 01423 772882 Fax: 01423 772341

ANGLO-FRENCH MEDICAL SOCIETY WEEKEND COURSE IN MEDICAL FRENCH

23rd (evening) - 25th January 1998, Burton Manor College, Wirral

This established course provides an invaluable background for doctors and medical students intending to work or study in French-speaking countries. Teaching is in small groups, by native French speakers, including doctors. All grades of linguistic ability accommodated. Approved for PGFA (9 hours).

Residential fees: £225 for doctors (£190 if within 5 years of qualification); £75 for students. Non-residential: £190 for doctors (£160 if within 5 years of qualification); £50 for students. There are places for 50 doctors and 30 students. Previous courses were highly successful, great fun and heavily over-subscribed; early application is advised.

**Contact Professor Gareth Williams, UCD at Aintree,
Fazakerley Hospital, Longmoor Lane, Liverpool L9 7AL.
Tel: 0151 529 2930 Fax: 0151 529 2931.**

THE OXFORDSHIRE APPROACH TO SELF-MANAGED PRIMARY HEALTH CARE TEAMS ACHIEVING EXCELLENCE IN PRIMARY CARE

WEDNESDAY - OCTOBER 22nd 1997 - 10.00 - 4.00

OXFORD CITY CENTRE - Close to main line rail and bus routes

For all members of Primary Health Care Teams,
and Primary Care Professionals working within Trusts and Health Authorities

Price £105 per individual, £200 per team of 2,
£225 per team of 3 including lunch and refreshments

Please book early as places are limited

Late bookings (after September 30th) ♦ £10 per head

PGFA Approval being sought

For further details and booking form please contact:

**Bryony Redknapp, Abingdon Hospital, Marcham Road, Abingdon Oxon OX14 1AG
Fax: 01235 547231 Tel: 01235 547204**

1997 applications invited

DIPLOMA IN COUNSELLING
a recognised BAC course

M.A. PSYCHOTHERAPY
accredited by the University of North London

CERT. IN COUNSELLING SKILLS
15 week foundation semester + themed workshops

all above courses are part time evenings
and weekends

All Courses held at
the Gestalt Centre London EC1



Details and application forms
01727 864806
email gestaltc@dia1.pipex.com

A ONE DAY CONFERENCE EXAMINING the use of **Conciliation**

in the NHS
28th October 1997 – Central London

Expert Panel of Speakers Includes:

Clive Wilson
Deputy Health Service Commissioner, Health Service Commission
Bob Debell
Managing Director, Pragmatic Training Services
Sue Simmons
Customer Care Manager, Lambeth NHS Trust
Chris Dabbs
Chief Officer, Salford Community Health Council
Joseph Boyle
Primary Care Services Manager, Croydon Health Authority
Ann Lloyd
Chief Executive, Frenchay NHS Trust
Julian Golland
Business Manager, Performance Management
NHS Executive, South Thames

This one day conference will discuss the steps to conciliation and what is required for effective expert mediation in dealing with complaints. It is essential for all those involved in complaints.

For further information, or to reserve your place, please contact:

ASHLI PAYNE on 0171 222 5110

Capita Training, 4th Floor, Dean Bradley House,
52 Horseferry Road, Westminster, London, SW1P 2AS.



MEDICAL HOMOEOPATHY

FULL-TIME COURSE (FAST TRACK FORMAT)
FOR MEDICAL DOCTORS

VENUE: THE ROYAL LONDON
HOMOEOPATHIC NHS TRUST (RLHH)
GREAT ORMOND STREET, LONDON WC1N 3HR

This is a full time 6 month course to give doctors a sound theoretical and methodical base with which to embark into homoeopathic practice. The course comprises of two 3 month terms.

- Distance Learning
- Clinical Attachment

Distance Learning includes course work books, videos and self-assessment exercises with an option to attend study days at the RLHH.

Clinical Attachment includes clinical teaching, attendance at clinical meetings and learning homoeopathic clinical practice in out-patients and on the ward.

START DATES: Choice of three Start Dates each year: August, November and February. Next course November 1997 - Apply now.

This course is also run in a part time modular format (PGEA accredited). For further details on both the courses please contact Vina Owen, Academic Administrator, on 0171 833 7213 (direct line), or fax on 0171 833 7212.

THE UNIVERSITY of York

Centre for Leadership Development Department of Health Studies

The aim of the Centre is to develop leadership potential within the National Health Service, Higher Education other Public Sector organisations and the independent sector. We offer innovative, creative, high quality leadership development programmes for Executive Directors, Senior Managers, Doctors and Professionals including:

The Leadership Development Programmes

starts on 29/30 September 1997 until
23/24 February 1998

For further details, please telephone
Ruby Gourlay (01904) 435138

Other courses on offer include:

Doctors and Managers Working Together
Master of Arts Degree/Postgraduate Diploma in Leading
Innovation and Change
Postgraduate Diploma in Leading and Managing in the Health Service
Postgraduate Certificate in Management for Clinical Doctors,
Co-ordinators and Leaders
An Introduction to Personal Construct Psychology
Making the Most of Yourself and Your Trainee
Development Centre for Doctors
Strategy into Practice - for leading managers in the NHS
Effective Leadership for Librarians

If you would like details of these programmes please contact:

Helen Jones	or Chris Holmes
Director	Programme Co-ordinator
Telephone: 01904 435138/9	Telephone: 01423 507771
e-mail: h.jones@pulse.york.ac.uk	e-mail: c.holmes@pulse.york.ac.uk

One Week Course for GPs

held at GUY's HOSPITAL

3 - 7 NOVEMBER 1997

UMDS

GUY'S AND ST THOMAS'
MEDICAL AND DENTAL
SCHOOL

Knowledge Update

Skills sessions

Visits to specialist Departments

Course Dinner

COURSE FEE £340

30 hours PGEA approval is being sought

Application forms from: Postgraduate Medical Studies,

UMDS, Guy's Hospital, London SE1 9RT

Tel: 0171 955 4190 Fax: 0171 955 4913

Marie Curie Cancer Fund * Education Department

Forthcoming events:

Paediatric Palliative Care - Bradford, 2nd October
Research and Evaluation in Palliative Care - Sheffield, 14th October
Cultural Approaches to Death and Dying - Bradford, 7th November
Palliative Care Study Day - Ipswich, 28th November
Breast Cancer Risk and the Pre-Menopausal Woman - London, 8th December

Breast and Cervical Screening Courses are scheduled to take place in Wallsall, Boston, London, Dartford, Gateshead, Chesterfield, Welwyn, Caernarfon, Reading, Esher and Coventry.

For further details on the above, other events, or for a copy of our current prospectus, please contact:

Marie Curie Education Department
17 Grosvenor Crescent, London SW1X 7XZ
Tel: 0171 201 2314/2322 Fax: 0171 235 2243



Conference

King's Fund

Promoting Patient Choice Together 30-31 October 1997, London

An international group of key speakers will address the following issues:

- Are doctors currently offering choices to their patients, or could they do more?
- What are patients' views of shared decision-making and choice?
- How do we help clinicians and patients work in partnership?

Details from: Pat Tawn at the King's Fund, Tel: 0171 307 2672

RESUSCITATION UPDATE COURSE FOR GENERAL PRACTITIONERS

20th NOVEMBER

Using Advanced Life Support Course techniques in small group and practical, "hands on" teaching, this one day course covers the essentials of:-

Basic Life Support Airway management
Defibrillation and monitoring Rhythm recognition
Initial management of major trauma Paediatric resuscitation

PGEA approved for 6 hours

Further details from:

*Mr P Bardell-Smith, Royal Liverpool University Hospital
Tel: 0151 706 2052 Fax: 0151 706 5899*

4th Bath Brain Injury Course October 28 - 31 1997

A wide selection of Speakers from all over the country
Specialty Workshops

Day 4 is dedicated to **Paediatric Brain Injury**

Cost £100 per day; £365 for all four days

For the programme and an application form please telephone
01225 473456

**or write to: Mrs Sue Gray, Deputy Clinical Director, Bath
Head Injury and Rehabilitation Unit, RNHRD NHS Trust,
Upper Borough Walls, Bath BA1 1RL.**



Master of Medical Science in Primary Health Care University of Leeds

Applications are invited from primary care professionals for this innovative and challenging programme of study leading to the Master of Medical Science degree.

This modular programme will be part-time, and may be completed in two and a half to five years, commencing March 1998. Diploma and certificate programmes are also available.

The modules include:

- Evidence based practice and clinical decision making
- Research appreciation, basic epidemiology and statistics
- Learning and teaching
- Managing change
- Medical ethics
- Sociology of health and illness

plus a range of elective modules:

Entry requirements would normally include an honours degree or a medical degree, but applications from other primary health care professionals are encouraged, as we are looking for people with experience and enthusiasm.

The programme is provided jointly by the Division of General Practice and Public Health Medicine, the Department of Postgraduate Medical Education, and the Nuffield Institute for Health.

Further details can be obtained from:

Mrs Trudy Pemberton
Division of General Practice and Public Health Medicine
20 Hyde Terrace, Leeds, LS2 9LN
Telephone: 0113 233 4179 Fax: 0113 2 33 4181
• Closing date for applications 14th November 1997

CARDIOVASCULAR DAY PREVENTION OF STROKE & ISCHEMIC HEART DISEASE TOPICS FOR GPs

EDGWARE POSTGRADUATE MEDICAL CENTRE
THURSDAY, 13TH NOVEMBER 1997

9.30 A.M. - 5.45PM

P.G.E.A. APPROVED

The day will be spent studying how successful we are in treating hypertension, and modern views on secondary and primary prevention mainly with regard to Cholesterol.

Please contact for further details: Edgware Postgraduate Medical Centre. Tel: 0181-952 9924 or Fax: 0181-952 7113

A PRESTIGIOUS CONFERENCE ON NUTRITION

Food - Health connection

A diet for our children's future

Saturday 8th November 1997

Arts Centre Warwick University

A one day conference 9am - 5pm - £50 ticket, lunch included

For details of speakers write or ring to the Good Gardeners' Association

Pinetum Churcham Glos GL2 8AD

Tel: 01452 750 402 or 01452 700 306

This conference is PGEA approved



MARGARET PYKE FAMILY PLANNING CENTRE

Will run two comprehensive Symposia on Reproductive Health Care

THE MANAGEMENT OF SEX HORMONES IN GENERAL PRACTICE

7th November and 5th December 1997

Regents College, Inner Circle, Regents Park, London NW1

PGEA and FFP approved

Topics covered by appropriate Specialist lecturers include:

Chlamydia: prevalence and diagnosis, complications and treatment
Update on HIV disease

The Abnormal Smear:- management

Hormonal Contraception: question and answer session

Update on IUDs: Gynefix

Emergency Contraception

Preconception Care:- Counselling and Genetic Screening

The role of Oestrogens: perspectives for primary care

Hormone Replacement Therapy:-

a) The breast:- What to say? What to do?

b) The effect of sex steroids on the brain

c) Management of period-free HRT

d) Migraine and HRT

Fee: £85 for each day

or £135 for attendance at both Symposia

Cheques made payable to: Margaret Pyke Memorial Trust

For further details please contact: Heather Goodman,
Margaret Pyke Centre, 73 Charlotte Street, London W1P 1LB

Tel: 0171 436 8390 Fax: 0171 530 3646



Organised by GPs, for GPs

Popular 5 day/10 Session PGEA approved course

November 10th-14th

Witney Four Pillars Hotel Oxfordshire

Areas covered include:-

- Contraception
- Medicine on the Internet
- Joint Injection
- Cancer Screening

Cost: £500 Residential. Full Board £270 Non-Residential

For details contact Dr Dave Lyell

Phone: 0181 651 1222 (Surgery) Fax: 0181 657 9297

PGEA applied for Diabetes in Primary Care 1998

19th & 20th January 1998

Royal College of Physicians

London

The **British Journal of Hospital Medicine** in association with the **Practice Nursing** are pleased to announce a major two day national conference aimed at GPs and Practice Nurses with an interest in the diabetes. The conference will include sessions on: **Principles of Integrated care, The highs and lows of IDDM, The elderly diabetic patient, New drugs in diabetes, Screening for diabetic eye disease, Setting up diabetic clinics in general practice, Audit in diabetes.**

If you would like more information please send your details to:

Mark Allen International Conferences, Croxted Mews, 286A - 288 Croxted Road, London SE24 9BY. Tel: (0181) 671 7521. Fax: (0181) 674 4550.

Get The Law On Your Side

Need to understand the Legal System? Always wanted a degree?

A Unique New Course

Part-time or full-time study at Southampton Institute:

BA (Hons) Legal Studies

Choose one of three specialist pathways:

Welfare Rights

Get involved in matters such as social security benefit, unfair dismissal and debt.

Criminal Justice

Develop your career as a social worker or in the probation, prison or police services.

Healthcare

Gain legal expertise to develop your career in health management.

For further information, please contact the Law Faculty on
01703 319501 or fax 01703 235948



SOUTHAMPTON
INSTITUTE

East Park Terrace, Southampton SO14 0YN

Telephone: (01703) 319000 Fax: (01703) 222259

Web Page <http://www.solent.ac.uk/>

COURSES FOR CAREERS. RESEARCH FOR RESULTS

The Patients Association seminars COMMUNITY PHARMACY: PATIENTS CHOICE

Frank Dobson MP, has revealed that pharmacy should play a wider role in providing health care to the nation. How will this work and how can patients benefit? New MORI research will be presented along with contributions from the Royal Pharmaceutical Society of Great Britain, National Pharmaceutical Association and the events' sponsors - Boots the Chemists.

Participants will include patients and influential health groups helping to shape the future of pharmaceutical care. All are afternoon seminars



Leeds: Nuffield Institute, 22 October 1997.
Cardiff: Hensol Castle, 18 November 1997.
London: Kings Fund, 13 January 1998.
Stirling: Royal Infirmary, 11 February 1998.



BOOTS THE CHEMISTS

Contact The Patients Association -
Telephone: 0181 423 9111 Fax: 0181 423 9119

RECRUITMENT

Meddoc Locums

The GP Locum service designed to meet the needs of general practice is looking for doctors to work in Kent.

We can provide a variety of experience in MultiPartner, Single Handed, Fundholding and Non-fundholding practices in the Garden of England.

We are also looking for Practice Nurses to register with our Practice Nurse Bank.

For further details contact:

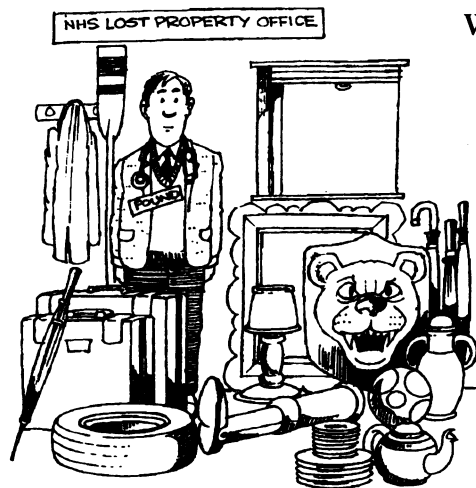
Moy Coomer on 01634 828329 or write to us at Meddoc Locums,
The Admirals Surgery, The Historic Dockyard, Chatham, Kent, ME4 4TE or see our web site: <http://www.meddoc.co.uk>

With the full support of WKHA

The Association of Medway Doctors on Call's Nursing Agency is licensed by Trading Standards, Kent County Council Registration Number NA90

Calling the lost (but not forgotten) doctors...

If you would like to return to general practice, to increase your work commitment or to add to your training, we want to hear from you.



We can put you in touch with training and support networks across the four counties of Berkshire, Buckinghamshire, Northamptonshire and Oxfordshire. We would also like to know if there were any specific ways we could help.

Please contact us for an information pack if you live in or around the four counties, are under 60, and:

- ◆ are working as a non-principal, or
- ◆ qualified as a GP but are no longer practising (perhaps having taken time out to have a family, or
- ◆ undertook part of, or have held posts that would contribute to, vocational training

Tel: 01865 227192 (24 hours)

From the Lost Doctors Group on behalf of GP Postgraduate Education, Oxford.

DOCTORS

Required for Insurance Medicals and Health Screening

Countrywide especially

Norfolk
Buckinghamshire
Hertfordshire
Northampton
Hereford & Worcestershire
North Yorkshire
South West/London
Devon & Cornwall
South East London
West London

Most work on mobile basis

Please reply with a brief C.V. to:

**Laura Holden,
Harley Street Doctors/Screening
77 Harley Street,
London, WIN 1DE**

Lifestyle...

MEDICAL PRACTICE OPPORTUNITIES

(Family Practice and Specialists)

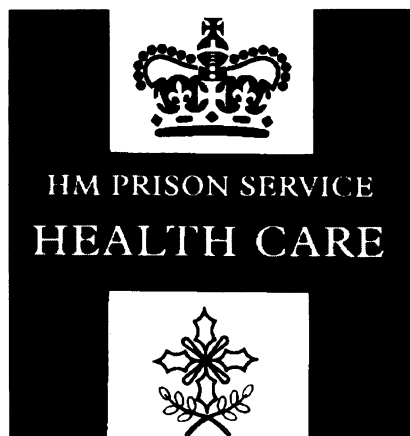
Newfoundland and Labrador is Canada's eastern most province. It is rich in natural beauty and provides a quality of life like no other, uncomplicated and unparalleled. Would you like to have a short commuting distance to work? Would you like to live in a safe and secure community? Newfoundland and Labrador has that and much more to offer - fishing, golfing, hunting, whale watching, skiing, hiking, are all readily available. If this sound like a dream, it's not - it's reality! If you feel this lifestyle is what you have been looking for, consider Newfoundland and Labrador for your medical practice.

The Province of Newfoundland and Labrador has a number of unique and challenging rural positions throughout the province for the right General Practitioner or Specialist. These opportunities vary between salaried and fee-for-service positions. Remuneration increases for salaried physicians have been recently implemented.

Qualifications are in accordance with the Newfoundland Medical Board regulations. For further information on the positions and the required qualifications, contact the Recruitment Office or send a current résumé to:

Physician Recruitment Coordinator
Newfoundland and Labrador Health Care Association
P.O. Box 8234
St. John's, NF, Canada A1B 3N4
Telephone (709) 364-7701 Fax (709) 364-6460
Check out our home page: www.netfx.ion.net/nlhca

HEALTH CARE SERVICE FOR PRISONERS



The Service provides medical care for prisoners to a standard equivalent to that in the National Health Service, and employs over 250 doctors, both full time and part time.

A programme of training is provided which recognises the specialist nature of medical work in prisons to include management: the syllabus leads to the acquisition of a Diploma in Prison Medicine.

All facilities and equipment are provided and all employed doctors are indemnified by the Service. Prison medicine is a challenging and rewarding area of medical practice. Vacancies exist both for full time and part time posts in many parts of England and Wales.

Doctors who are interested are invited to write or speak to:

Dr Roy Burrows,
Directorate of Health Care,
Cleland House, Page Street,
London SW1P 4LN,
Tel: 0171-217 6550,
Fax: 0171-217 6412.

New Publications from RCGP Sales

BREAKING BARRIERS Towards Culturally Competent General Practice

The RCGP Inner City Task Force, Supported by the Department of Health, initiated a project in 1995 to consider the quality of the general practice consultation among black communities. Problems to do with language, racism, lack of information, access and perceptions of GP's were identified and 24 recommendations were made for consideration by the RCGP, health authorities and the Department of Health.

Breaking Barriers, ISBN 0 85084 237 9, is £9.00 (£9.90 non-members).

HOW TO WORK WITH YOUR DOCTOR

This initial project was devised by the RCGP's Patients' Liaison Group and its aims were to provide patients with comprehensive information about primary health care and the family doctor service and, to improve communication between patients and doctors through the production of five information leaflets. This book is not only the report of a successful joint project but gives invaluable information for practices wishing to promote partnership between patients and doctors by designing their own leaflets.

How to Work with Your Doctor, ISBN 0 85084 236 0, is £10.00 (£11.00 non-members).

HANDBOOK OF SEXUAL HEALTH IN PRIMARY CARE

This handbook offers practical guidance on sexual health care for those working in a primary care setting. Written by a team of experts from a variety of backgrounds this accessible handbook covers a broad range of topics with chapters on: taking a sexual history; making services as accessible as possible; confidentiality, well women and well man issues; contraception; preconception care; planned and unplanned pregnancy; sexually transmitted diseases; sexual problems in primary care and ensuring the quality of sexual health services.

Handbook of Sexual Health in Primary Care, ISBN 0 85084 238 7, is available November 1997, price £16.20 (£18.00 non-members).

All these publications are available from RCGP Sales Office, 14 Princes Gate, Hyde Park, London SW7 1PU. Telephone: **0171 823 9698** (between 9.30-4.30) or fax orders to: **0171 225 0629**. Alternatively credit card orders can be placed using our 24 hour answerphone: **0171 225 3048**.

*Diabetes can be managed
in Primary Care*



*A Course designed for the
Primary Care Team*

Diploma Course **DIABETES MANAGEMENT IN PRIMARY CARE**

"For Primary Care - by Primary Care"

**TOTAL PRIMARY CARE CLINICAL SKILLS INCLUDING INSULIN THERAPY
DISTANCE LEARNING PACKAGE AND HANDS-ON 2 DAY WEEKEND COURSE**

ACCREDITATION FROM THE UNIVERSITY OF BRADFORD

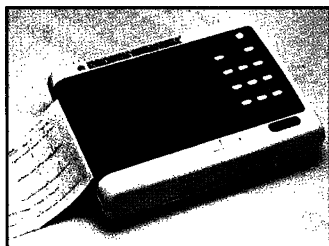
Send for our brochure, to: **DIABETES TRAINING CENTRE**

4 Station Road, Esholt, Shipley, West Yorkshire, BD17 7QR. Tel: 01943 - 877388. Fax: 01943 - 877204



ECG 9320K

- Flexible, high quality multi-purpose ECG
- 3, 6 or 12 channel format
- 9.4" LCD display with touch screen controls
- Software and hardware options

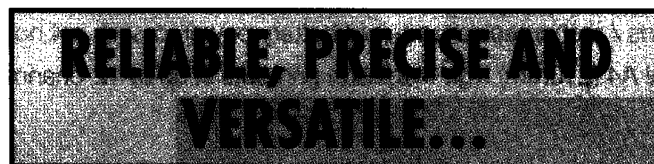


ECG 8420

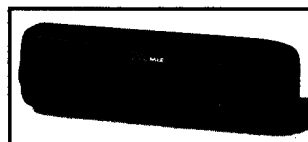
- Multi-channel
- Stress test monitoring
- Records 6 ECG waveforms
- Mains or battery
- Multi-copy high quality printing

Available on a trial basis
Leasing option
Call now for a free demonstration

Nihon Kohden UK Ltd, Freeport (TK1612),
Isleworth, Middlesex TW7 4BR
Tel 0181 568 5655 Fax 0181 560 9066



NIHON KOHDEN offers a wide range of high performance and dependable electronic medical equipment to meet the requirements of those involved in cardiac and respiratory care.



spirobank

NEW - SPIROBANK

The revolutionary pocket sized
3 in 1 Spirometer

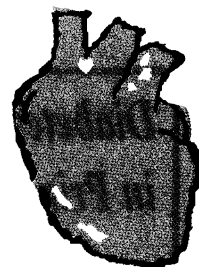
- Operates as stand-alone or connected to PC or printer
- Precise - even at very low flow rates
- Unbreakable and shockproof
- Easily cleaned and sterilised
- Desktop version also available

Fighting disease with advanced technology

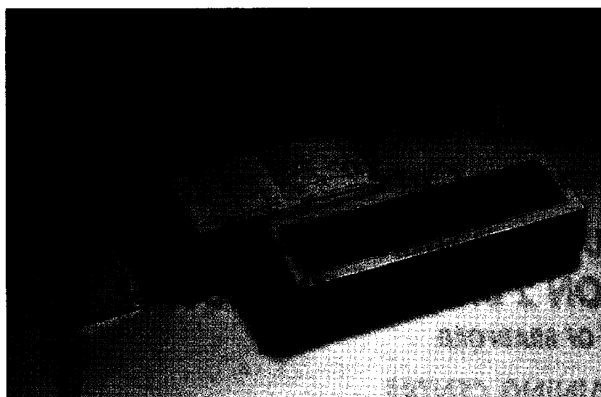


SCHILLER

Electrocardiograph products
Swiss Quality Engineering at Unbeatable Prices



Now in the U.K. with Med-Tech Systems



CARDIOVIT AT-1 Compact 3-Channel recorder

Only 2.9kg and 290 x 210 x 69 mm

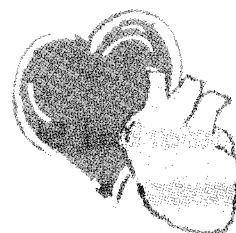
Powered by Mains / 12v lead-acid battery for full portability

Manual mode or User configured automatic printouts

Selectable baseline, mains hum and muscle tremor filters

ECG memory for easy copying

User selectable QRS beep tone



Select the version you need:

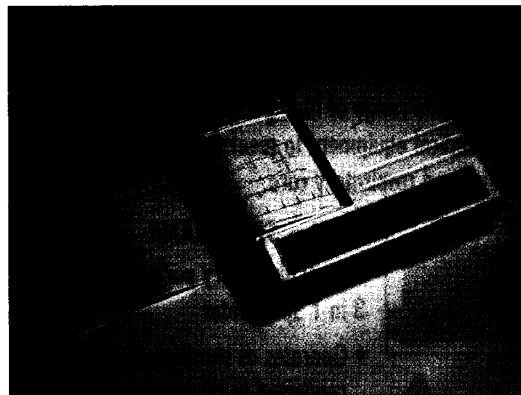
Standard Unit	£1200.00
With full measurements	£1500.00
With full interpretation	£2000.00

CARDIOVIT AT-2 and AT-2 plus The complete choice of A4 recorder

Both units only weigh around 5kg and are 400 x 100 x 330 mm

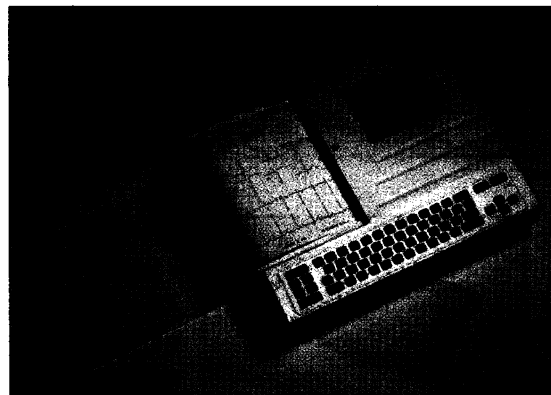
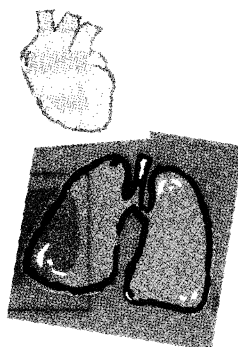
Mains / rechargeable lead-acid battery powered, with a 4 hour operation time (300 printouts)

Real A4 (210mm) high resolution printouts in up to 12-channels of the users selection



Cardiovit AT-2

Standard unit	£2200.00
With Interpretation	£2990.00



Cardiovit AT-2 plus

With 3-ch LCD screen and keyboard

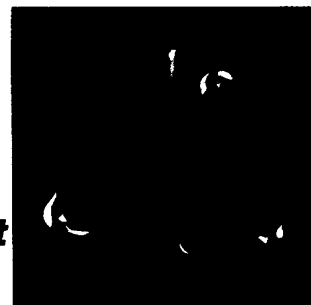
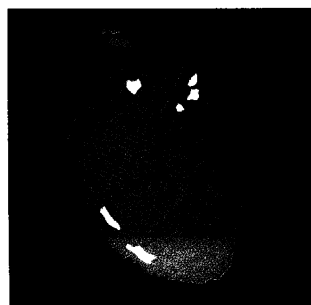
Standard unit	£2790.00
With interpretation	£3600.00

Med-Tech Systems Ltd.

Unit 2E, Northlands Business Park
Warnham, Horsham, West Sussex, RH12 3SJ
Telephone 01306 627171 Fax 01306 627141

10% Discount for enquiries referring to this advert

Prices subject to VAT where applicable



For Diabetes Monitoring, Think MEDISENSE

So who do you think of first?
Why think MediSense?

The answers are easier than
you might think.

A range of products that are
compact, easy to use and fast to
perform tests. Compatible Test
Electrodes (Test Strips) for
MediSense Card®, Pen® and Precision

Q.I.D.™ Sensors (available on prescription).
Maintenance free and no need to replace
batteries. Our own manufacturers warranty
and a price per test to maximise your
practice budget.

Why choose MediSense?

Why not!



More than just a product

For more information simply complete the following details, and return to:

MediSense, Abbott Laboratories Ltd.,

FREEPOST BM 2413, Birmingham B46 1BR.

or telephone the helpline on:

FreeCall 0500 467466, 8.00am - 6.00pm, Mon-Fri

(Answerphone outside of office hours)

Please send me more information on:

- ☐ The MediSense® Card And Pen Sensor
- ☐ The Precision Q.I.D.™
- ☐ Patient Educational Materials
- ☐ P.C. Link™ Software (To download up to 125 results)

Name: _____

Title: _____

Practice Address: _____

City: _____

Postcode: _____

For people who prefer plain English

The ONE TOUCH[®] BASIC[™] displays a message to prompt you through the test, and lets you know if you are doing anything wrong. Unlike other meters, it does this in plain English without abbreviations or strange symbols. Just switch on, insert a test strip and apply a drop of blood to get a result.

It is quite simply the easiest meter to use.

Please ring for more details.

LifeScan Customer Care
Freephone:

0800 121200

