

CLIMESSE. ABBREVIATED PRESCRIBING INFORMATION. Indications Hormone replacement therapy for the treatment of menopausal symptoms. Prophylaxis of post-menopausal osteoporosis in women at risk of developing fractures. Presentation Tablets containing 2mg oestradiol valerate USP and 0.7mg norethisterone. Dosage and Administration One tablet daily, as directed on the 28 day calendar pack. CLIMESSE should be taken continuously without a break between packs. CLIMESSE should not be taken by women until at least 12 months after their last menstrual period. CLIMESSE is designed to prevent endometrial stimulation in postmenopausal women, usually resulting in amenorrhoea. Irregular bleeding may occur in first few months but this is usually transient, and amenorrhoea will develop in the majority of women. If after 3-4 months, continued unacceptable

PERIOD-FREE HRT FOR POSTMENOPAUSAL WOMEN

HRT without strings

ONE TABLET DAILY

bleeding is still being experienced, CLIMESSE should be discontinued. If bleeding subsides, no further investigation is

necessary. Bleeding after a period of amenorrhoea or heavy bleeding after a period of light bleeding may occur. Any doubt regarding the cause of such bleeding should be investigated. Certain conditions may predispose to persistent irregular bleeding, such as uterine polyps and fibroids. Appropriate investigations, including endometrial assessment should be carried out in all women who experience prolonged bleeding or who begin to bleed sometime after initiation of therapy. Patients changing from sequential hormone replacement therapy to CLIMESSE should do so at the end of the oestrogen plus progestogen phase of the sequential therapy, without a tablet free interval. Menopausal status may not be known and in some women endogenous oestrogens may still be being produced. This could result in unpredictable bleeding patterns. **Contra-indications** Known or suspected pregnancy. Nursing women. History of, known or suspected cancer of the breast. Known or suspected oestrogen dependent neoplasia. Undiagnosed abnormal genital bleeding. Active thrombophlebitis or thromboembolic disorders. Severe cardiac, hepatic or renal disease. Allergy to one or more constituents. **Precautions** Premenopausal women should not receive CLIMESSE because it may inhibit ovulation, disturb cycle regularity and result in unpredictable bleeding patterns. CLIMESSE is not an oral contraceptive and should not be used to prevent pregnancy. There is suggestive evidence of a slight increase in the relative risk of carcinoma of the breast when HRT is used for longer than five to ten years. Regular breast examinations should be carried out and mammography where appropriate. Women should be instructed in self breast examination. Closely monitor breast status in women with a history of, or known, breast nodules or fibrocystic disease. Thorough gynaecological and physical examination is advised before and periodically during therapy. Carefully observe patients who suffer with diseases which may deteriorate during pregnancy or with oestrogen use, including otosclerosis, migraine, multiple sclerosis, epilepsy, diabetes, porphyria, uterine fibroids and systemic lupus erythematosus. Closely monitor patients with endometriosis. If jaundice, migrainous or unusually severe headaches occur for the first time or any symptoms that are possible prodromata of vascular occlusion, suspend treatment pending further investigation. Consider discontinuation when trauma, illness or impending surgery is considered to entail a risk of thrombosis. Rarely an idiosyncratic rise in blood pressure may occur and necessitate suspension of treatment pending investigation. Most studies show HRT has little effect on blood pressure, however patients with pre-existing hypertension should be monitored regularly. Check liver function every 8-12 weeks in patients with mild chronic liver disease. Closely monitor patients with Dubin-Johnson and Rotor syndrome. **Side-Effects** Irregular bleeding or spotting in first few months of therapy; it is usually transient. Other side-effects observed during treatment include: breast tenderness, acne, depression, weight gain and fatigue. Other side-effects that may be expected from this type of therapy include: abdominal cramps, nausea, leg cramps, irritability, fluid retention, palpitations, flatulence, bloating, headaches, dizziness, skin rash, dysmenorrhoea, vomiting, change in libido, enlargement of breasts and vaginal discharge. **Package Quantities and Price** 1 calendar pack of 28 tablets £7.90. 3 calendar packs of 28 tablets £23.70. **Legal Category** POM. **Product Licence Number** PL 01010396. CLIMESSE is a registered Trade Mark. Full prescribing information, including product Data Sheet, is available from Novartis Pharmaceuticals trading as Sandoz Pharmaceuticals, Frimley Business Park, Frimley, Camberley, Surrey, GU16 5SG. Date of Preparation December 1997

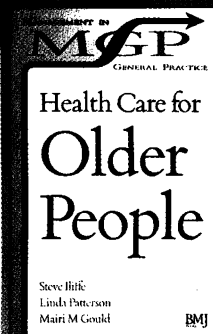
Climesse®

oestradiol valerate & norethisterone

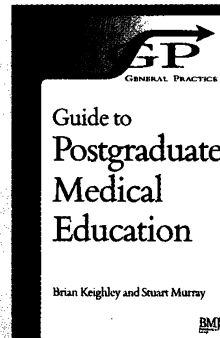
MANAGEMENT IN

GENERAL PRACTICE SERIES

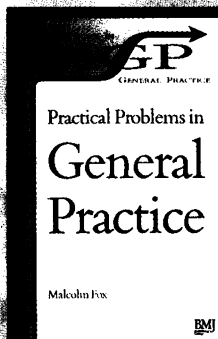
NEW



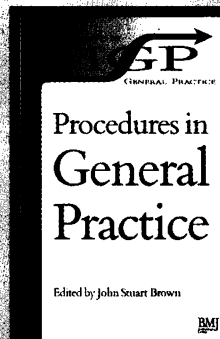
Health Care for Older People
Steve Little, Linda Patterson and Mairi M Gould
Edited by a multidisciplinary team of clinicians, this book tackles the typical and atypical challenges in caring for older people. With discussion of practical solutions, and through the use of case studies, it is an essential guide for all those working in primary health care. Chapters include: Ageing, illness and disability; Family and other informal carers; Community social services; Community health services; Screening in general practice; Hospital/community interface.
ISBN 0 7279 1192 9 PB 216x138mm 192pp. January 1998
UK £17.95; Overseas £20.00 (BMA members £16.95; £19.00)



Guide to Postgraduate Medical Education
Brian Keighley and Stuart Murray
This book provides a comprehensive guide to the various aspects of postgraduate medical education, including the selection and training of junior doctors, the role of consultants, and the importance of continuing education. It is an essential reference for all those involved in the education of junior doctors.
ISBN 0 7279 1193 7 PB 216x138mm 192pp. January 1998
UK £17.95; Overseas £20.00 (BMA members £16.95; £19.00)



Practical Problems in General Practice
Malcolm Fox
This book provides a comprehensive guide to the various aspects of general practice, including the selection and training of junior doctors, the role of consultants, and the importance of continuing education. It is an essential reference for all those involved in the education of junior doctors.
ISBN 0 7279 1194 5 PB 216x138mm 192pp. January 1998
UK £17.95; Overseas £20.00 (BMA members £16.95; £19.00)



Procedures in General Practice
Edited by John Stuart Brown
This book provides a comprehensive guide to the various aspects of general practice, including the selection and training of junior doctors, the role of consultants, and the importance of continuing education. It is an essential reference for all those involved in the education of junior doctors.
ISBN 0 7279 1195 3 PB 216x138mm 192pp. January 1998
UK £17.95; Overseas £20.00 (BMA members £16.95; £19.00)

ORDER FORM

BMJ Books, PO Box 295, London, England WC1H 9TE
Tel: 0171 383 6185/6245 Fax: 0171 383 6662

QTY	TITLE	AMOUNT
	GUIDE TO POSTGRADUATE MEDICAL EDUCATION	
	PRACTICAL PROBLEMS IN GENERAL PRACTICE	
	PROCEDURES IN GENERAL PRACTICE	
	HEALTH CARE FOR OLDER PEOPLE	
TOTAL £		

Membership No. where applicable

NAME (print clearly)

ADDRESS

Cheque enclosed (made payable to British Medical Journal) £

Expires

Signature

BMJ
Books

New 3M™ Littmann™ Dual Stethoscope –

For hearts
both great and small



One stethoscope for both
adult and paediatric patients

*** COMPLETE VERSATILITY**

The Littmann Dual stethoscope features a large dual frequency diaphragm for adults and a small dual frequency diaphragm for paediatric patients. This allows both low and high frequencies to be heard without having to turn over the chestpiece.

*** SUPERIOR PERFORMANCE**

Two-tubes-in-one-design and adjustable double leaf binaural spring.

*** EXTRA COMFORT**

Soft-sealing eartips and non-chill rim add to both doctor and patient comfort.

*** GUARANTEED QUALITY**

Supplied with five year warranty and backed by full 24 hour service support.

Free CD
of heart and lung
sounds with every
purchase.



15TH WORLD WONCA CONFERENCE

PEOPLE AND THEIR FAMILY DOCTORS - PARTNERS IN CARE

Hosted by the Irish College of General Practitioners

R.D.S., Dublin, June 14th - 18th 1998

- ◆ **This years World Conference for Family Doctors in Dublin, Ireland will focus on the changing relationship between family practitioners and their patients as we approach the next millenium.**
- ◆ **Join us in Dublin and set the agenda for the future.**
- ◆ **Dublin is a city of history and culture - come and trace the footsteps of "Ulysses" and enjoy the lively conversation, music and dance.**

- **Early registration is recommended in order to guarantee accommodation.**
- **3,000 delegates are expected to attend.**
- **1,500 registered to date.**
- **1,400 abstracts submitted at closing date.**

THE IRISH COLLEGE OF GENERAL PRACTITIONERS

Corrigan House, Fenian Street, Dublin 2

Tel: 353-1-6763705/6, Fax: 353-1-6765850

E-mail: wonca@icgp.ie, Web: <http://indigo.ie/-icgp/>

GET SEX WISE WITH THE NEW FPA MEMBERSHIP

FPA
FAMILY PLANNING
ASSOCIATION

The new FPA membership package provides efficient, cost-effective information and training services to help busy sexual professionals meet their targets.

Benefits include:

- annual subscription to FPA's new quarterly membership newsletter, including updates on FPA campaigns and policy
- annual subscription to the Contraceptive Education Bulletin
- full set of 15 CES factsheets on contraception and sexual health
- reductions of FPA training including courses on counselling skills in unplanned pregnancy and updates in family planning
- discounts on FPA publications and leaflets
- special savings and priority bookings to FPA conferences and seminars

Special offer on FPA membership for GP practices

5% discount off the list price on purchases over £100 from FP Sales (FPA's commercial arm) including contraceptives and specialist medical equipment.

Don't forget FPA's Contraceptive Education Service which provides a range of services to sexual health professionals. The library and information centre carries the latest medical, legal and statistical information on sexual health and family planning; while special CES leaflets on all 13 methods of contraception are available for GPs to use with patients. Call the number below for more information.

For further information and a membership leaflet, contact Membership Services,
FPA, 2-12 Pentonville Road, London N1 9FP. Tel: 0171 837 5432 quoting reference BJGP.

promoting sexual health and family planning

Contraceptive

Education

Service

Are you attending the Spring Meeting in Exeter?

The RCGP Sales Office is pleased to announce the launch of new additions to its gift selection.

Matching cufflinks and tie slides for the gentlemen and handbag mirrors and atomisers for the ladies will be available, along with the extensive range of gifts already on sale.

We will also be offering a free gift wrapping service at this meeting for those who want to take gifts home.

It will also be the last chance to purchase polyester ties at the special price of £2.50 and framed College crests at £5.00 each.

Look forward to seeing you on our stand in the Peter Chalk Centre.

RCGP Sales Office, 14 Princes Gate, Hyde Park, London SW7 1PU.

Telephone: 0171-823-9698 Fax: 0171-225-0629.

E-mail: sales@rcgp.org.uk.

CLASSIFIED ADVERTISEMENTS

Classified Advertisements are welcomed and should be sent to: Maria Phantis, Royal College of General Practitioners, 14 Princes Gate, Hyde Park, London SW7 1PU. Telephone: 0171 - 581 3232. Fax: 0171 - 225 - 0629. Copy must be received three weeks before the 1st of the month of issue to ensure inclusion. Every effort will be made to include advertisements received after this date but publication cannot be guaranteed and the advertisement may have to be held over to the following issue. The publisher will not be responsible for any error in the insertion of, or omission to insert, any advertisement. The charge for space in this section is £25.00 per single column centimetre, plus £10.00 if a box number is required, plus VAT at 17.5%. Fellows, Members and Associates of the Royal College of General Practitioners may claim a 10% reduction. Replies to box numbers should be sent to the above address, with the box number on the envelope. The inclusion of an advertisement in this *Journal* does not imply any recommendation and the Editor reserves the right to refuse, amend or withdraw any advertisement without explanation. All recruitment advertisements in this section are open to both men and women.

RECRUITMENT

MEDICAL PRACTICE OPPORTUNITIES (Family Practice Physicians)

Craggy cliffs, deep fjords, snow-capped mountains and abundant wildlife are just a few of the natural attractions Newfoundland and Labrador has to offer. If you would like to practice in a pristine environment and perhaps the last bastion of clean air and pure water in North America, consider Newfoundland and Labrador.

The Province of Newfoundland and Labrador has a number of unique and challenging rural positions throughout the province for the right General Practitioner. These opportunities vary between salaried and fee-for-service positions. Remuneration increases for salaried physicians have been recently implemented.

Qualifications are in accordance with the Newfoundland Medical Board regulations. For further information on the positions and the required qualifications, contact the Recruitment Office or send a current resume to:

*Physician Recruitment Coordinator
Newfoundland and Labrador Health Care Association
P.O. Box 8234
St. John's, NF, Canada A1B 3N4
Telephone (709) 364 7701 Fax: (709) 364 6460
E-mail: cbutler@nlhca.nf.ca
Check out our home page: www.nlhca.nf.ca*

DOCTORS

Required for Insurance Medicals and Health Screening

Countrywide especially

**Norfolk
Buckinghamshire
Hertfordshire
Northampton
Hereford & Worcestershire
North Yorkshire
South West/London
Devon & Cornwall
South East London
West London**

Most work on mobile basis

Please reply with a brief C.V. to:

**Laura Holden,
Harley Street Doctors/Screening
77 Harley Street,
London, W1N 1DE**

DISILLUSIONED WITH THE WHITE PAPER? LOOKING FOR A NEW CHALLENGE?

WHY NOT GENERAL PRACTICE IN A PRIVATELY RUN PRISON

We need 2/3 GPs to be part of a team dedicated to the development of medical services at HMP Blakenhurst which is situated near Redditch, Worcestershire. The team will be required to cover between 0800 and 1300 Monday to Friday (except bank holidays) and 0900 to midday on Saturdays. There is no on-call commitment and sessions will be available in local practices. An excellent remuneration package is on offer.

**For further details contact the Practice Manager,
DeMontfort Medical Centre, Church Street,
Evesham, Worcs. WR11 6DS on 01386 446422.**

Experienced Trainers' Course

A residential course for GP trainers with some training experience will be held at Cumberland Lodge in Windsor Great Park from 12th - 15th May 1998. The course will cover the use of a task list for one-to-one teaching, the development of effective tutorials and new ways of looking at curriculum planning and assessment. The tutors come from the Region's Regional Advisers and Course Organisers, the Oxford University's Department of Educational Studies, and the Department of Public Health and Primary Care. The course will be approved under Section 63.

Please apply for further details to: **Jackie Webster, Training & Development Unit, The Department of Postgraduate Medical & Dental Education, The Triangle, Roosevelt Drive, Headington, Oxford OX3 7XP, or telephone 01865 740663.**

PGEA Approved 30 Hours



FESTIVAL BATHTIME

11-15th May 1998

"LIFE AFTER PGEA"

Course for General Practitioners at the University of Bath

REFRESHER COURSE WITH A DIFFERENCE!

Following the CMOs report "The writing is on the wall for PGEA"

Hear what works in Medical Education and learn how to learn

Are you worried by the terms Health Needs Assessment, Significant Event Auditing and Development Plans?

Seize the opportunity to *learn what it's all about* and be ready to *lead your practice team into the brave new world*. Write your own development plan.

Also enjoy a *Critical Appraisal Skills Workshop*. Sessions on the *Primary and Secondary Prevention of Coronary Heart Disease, Heart Failure and Medical Ethics. Update your CPR certificate.*

A one day workshop of *Interaction, Reflection and Gossip about Medical Communication* with Phil Hammond. (This will involve simulated consultations with actors)

Lastly a session on *Evidence Based Practice* with quizzes and prizes

Held in the Conference Centre at the University of Bath with residential/non-residential options. There will be a mid-week course dinner. Accommodation is with full board and includes all coffee and tea breaks. Come and enjoy a week in Bath. Shopping and sight-seeing. An opportunity to attend the opening of the Bath Festival and Fireworks Display with a picnic in the Royal Crescent. Superb facilities, Swimming, Running, Golf and Tennis as well as talking with colleagues.

Speakers include:-

- Professor Tim Van Zwanenberg** (Newcastle)
- Professor Mike Pringle** (Nottingham)
- Professor Janet Grant** (Open University)
- Dr David Percy** (Chairman of Directors of GP Education)
- Dr Phil Hammond** (Trust me I'm a doctor)
- Dr William Hubbard** (Cardiologist - Bath)
- Dr Neil Scheurmler** (Health Authority Medical Adviser)
- Professor Roger Higgs** (Kings College)
- Andy Barton and Rob Taylor** (CASP trainers)

**Costs: £550 full board inc. Course dinner -
£350 for non-resident inc. Course Dinner**

Full details from:

STELLA LEEDER, Department of General Practice,
Postgraduate Medical Centre, Royal United Hospital,
Bath BA1 3NG

Tel: 01225 824893/4 Fax: 01225 484926

Let us help you pass...

Intensive Revision Courses

MRCGP

London Sept 19-20 or Manchester Sept 5-6 1998

BCJ

London July 27-31 or Dec 14-18 1998

DRCOG

London Sept 4-6 or Manchester Sept 11-13 1998

GP UPDATE

(PGEA approved)

Manchester November 9-13 1998

Plus an Extensive Range of Study Guides by Return Of Post
MRCGP BCJ DRCOG GPUPDATE

Contact us now for further details
PasTest, FREEPOST, Knutsford, Cheshire, WA16 7BR

TEL: 01565 755226

PASTEST

FAX: 01565 650264

Royal College of General Practitioners Fellowship by Assessment Working Group

NATIONAL FBA STUDY DAY FOR REGIONAL SUPPORTERS, FBA ADVISERS AND ASSESSORS

**led by Professor Mike Pringle FRCGP
and Dr Alison Kay FRCGP**

Tuesday 5th May 1998 from 10.30 - 4.30pm
at the RCGP, 14 Princes Gate, London

Programme includes:
launch of the new criteria (FBA9), a detailed look at
advising and assessing and a presentation on the
new Quality Practice Award

PGEA applied for. Cost: £50.00 inc. lunch & VAT

For provisional bookings and further details contact:

Janet Bailly, FBA Administrator

Tel: 0115 9709391 Fax: 0115 9709389

e-mail: js97@dia1.pipex.com

**ST. GEORGE'S HOSPITAL MEDICAL SCHOOL
(UNIVERSITY OF LONDON)
DEPARTMENT OF ADDICTIVE BEHAVIOUR
CENTRE FOR ADDICTION STUDIES
COURSE PROGRAMMES 1998/99**

1. Multidisciplinary Drug and Alcohol Workshops
2. Certificate in Substance Misuse (Multidisciplinary)
3. Certificate in Recognition and Management of Substance Abuse (ENB 962)
4. Diploma in Drug and Alcohol Dependency Nursing (ENB 612)
5. Postgraduate Diploma in Addictive Behaviour (for GPs and multidisciplinary staff)
6. MSc Addictive Behaviour (University of London validated)
7. MPhil/PhD

All taught courses begin October 1998.

For further details and application forms, please contact:

THE COURSE SECRETARY, EDUCATION AND TRAINING UNIT
DEPT. OF PSYCHIATRY OF ADDICTIVE BEHAVIOUR
ST. GEORGE'S HOSPITAL MEDICAL SCHOOL
CRANMER TERRACE, LONDON SW17 0RE
Tel: 0181 725 2781/2637 Fax: 0181 725 2914



MSc in Palliative Care

Applicants are invited for this new MSc in Palliative Care starting in January 1999. The course can be taken over one or two years and comprises the following:

• **Core Modules**

Research methods and statistics in palliative care; Biology and management of symptoms in advanced disease; Service organisation and policy in palliative care; Psychosocial, cultural, ethical and spiritual issues.

• **Optional Modules** (two from the following):

Advanced pain and symptom control; Service development and management; Advanced psychosocial and spiritual care; Applying epidemiology to palliative care.

The MSc is open to all who have a degree in medicine, dentistry, or an upper second class honours degree in nursing, life sciences, social sciences, or other approved subjects. It is taught by staff of King's College School of Medicine and Dentistry, St. Christopher's Hospice, and other senior clinicians and academics from all aspects of palliative care.

Course Fees: Full-time UK/EC: £2,540 Part-time UK/EC: £1,270 Full-time Overseas: £9,350.

For further details, application forms and additional information please contact: The Course Administrator, Department of Palliative Care & Policy, King's College School of Medicine and Dentistry, New Medical School, Bessemer Road, London SE5 9PJ. Tel: +44 (0)171 346 3995. Email: bimpe.akinwunmi@kcl.ac.uk

Promoting excellence in teaching, learning & research

Equality of opportunity is College policy



**Adverse Drug Reaction
Study Day**

for doctors & pharmacists

City Hospital, Birmingham
Wednesday, 29th April 1998

Fee: £70, including lunch - £35 (half-day)

CME Approved 4 credits

Speakers include: Dr M Donaghy (Drug included peripheral nerve damage),
Prof Li Wan Po (ADRs to excipients),
Dr M Pirmohamed (Mechanisms of ADRs),
and Dr P Waller (Headaches for regulators)

Contact: Christopher Anton. Tel: 0121-507 5672. Fax: 0121-507 5585. email: chrisa@chtpharm/demon.co.uk



THE TAVISTOCK CLINIC



**Mind and Body in Practice
The second annual Tavistock GP Study Week
13 - 17 July 1998**

Following the success of last year's event, we are pleased to announce a **second annual GP Study Week**, designed both for previous participants and newcomers. Organised by the Clinic's senior staff including its two consultants in general practice and primary care, (Andrew Elder and John Launer) this year's Study Week will include presentations and workshops on a further range of topics in which the Tavistock has made important advances in research and training, all immediately relevant to GPs. These topics will include partnership and team interactions, child protection and gender identity, as well as different ways of conceptualising everyday GP work with physical illness and mental disturbance.

Typical comments from last year's evaluation: "highly relevant..." "Generally most excellent, Very exciting structure and shows obvious evidence of very detailed and meticulous planning..." "Course material gripping and arrangements enlisted lots of informal interchange - very enriching..."

PGEA approval applied for.

For further information please contact:
Jenni Hudson, The Conference Unit, Tavistock Clinic,
120 Belsize Lane, London NW3 5BA. Tel: 0171 447 3715
Fax: 0171 447 3785. Please quote ref: C68.

**University of
Sunderland**

School of Computing and Information Systems,
St Peter's Campus, St Peter's Way, Sunderland SR6 0DD

MSc Health Information Management (part-time)

Since 1993 almost 100 NHS IM&T Staff have studied on this programme.

Core Modules: Health Information Environment, SSADM, IT Skills/Internet/WWW, Statistics, Current Health IM&T issues.

Optional Modules: Networks & Computer hardware, Relational Database Systems, Managing People, Managing Financial Resources, Managing Change, IT Project Management.

**Professional Awards IM&T Health.
Degree level, portfolio/work-based**

A flexible work-based approach to learning. No written examinations or requirement to attend formal courses. The awards were designed by the NHS for the NHS, in particular to increase the professional standing of IM&T staff.

Seven modules: IM&T in Health Care, IM&T Strategy and the Management of Change, Information Management Information Systems, Information Technology, Personal Professional and Management Skills, Integrative Module.

For further details contact: **Paul Fellows. Tel: 0191 515 3421**
or **Basia McTernan 0191 515 3239** or **Gillian Thompson 0191 515 2758**

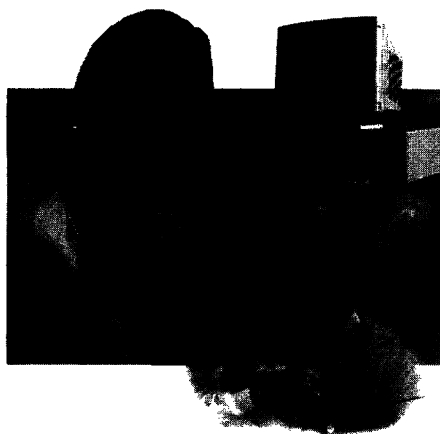
E-mail: paul.fellows@sunderland.ac.uk

University of Surrey

SCHOOL OF MANAGEMENT STUDIES FOR THE SERVICE SECTOR

MSc in Health Care Management

Open to all professional groups within the health sector, the MSc in Health Care Management provides an academically challenging and stimulating study of management within health care. Managers, administrators, doctors, nurses and other health care professionals are offered a tailored delivery designed to enhance their ability to influence, manage and achieve objectives within a sound financial framework. The programme is led by experts in the fields of:



- Resource and Operational Management (Health)
- Financial Management
- Organisational Behaviour
- Research Methods
- Quality Management
- Comparative Health Care Systems
- Education and Development
- Project Appraisal (Health)
- Analysis and Integration of Health Information
- Law and Ethics
- Health and Work
- Entrepreneurial Opportunities in Health Care

Study may be undertaken on a full or part-time basis



For further details and an application form please contact:

Dr Terry Desombre or Gillian Chubb on +44(0)1483 259651, email: G.Chubb@surrey.ac.uk or at
School of Management Studies for the Service Sector, University of Surrey, Guildford GU5 2XH, U.K.

MOORFIELDS EYE HOSPITAL

N.H.S. TRUST

Patron: Her Majesty The Queen

(in association with the Institute of Ophthalmology)

GENERAL PRACTITIONERS COURSE IN OPHTHALMOLOGY
27-29 APRIL 1998

A three day course will be held in the Clinical Tutorial Complex, Moorfields Eye Hospital. The course has been put forward for approval to the PGEA Scheme under Disease and Service Management.

The following sessions are scheduled:

The Watery Eye and Common Adnexal Problems
Neuro-ophthalmology
Diabetes
Glaucoma
Vitreoretinal and Ocular Trauma
Strabismus
Medical Retina
Cataract

Each session will include lectures and the clinical demonstration of patients from each service.

Course Organiser: Mr R D Daniel BSc RCS DO

COURSE FEE: £300 (to include lunch and refreshments)

For further details please contact:

The Courses Office
Postgraduate Medical Education Centre
Moorfields Eye Hospital
City Road, LONDON EC1V 2PD

Telephone: 0171 566 2248 Fax: 0171 566 2249

**DIPLOMA OF THE FACULTY OF FAMILY
PLANNING AND REPRODUCTIVE
HEALTH CARE (DFFP)**

DO YOU HOLD ONE OF THE FOLLOWING
FAMILY PLANNING CERTIFICATES?

◆ JCC

◆ FPA

◆ DRCOG (awarded before February 1990)


The Faculty has extended the deadline for applications for the Diploma of the Faculty of Family Planning (DFFP), based on the possession of one of the above mentioned family planning certificates. Applications must now be received by not later than 30 September 1998.

To be eligible to apply you need to have:

- ◆ been awarded one of the above family planning certificates;
- ◆ be currently, clinically involved in the sphere of the Faculty; and
- ◆ be able to provide documentary evidence of attendance at not less than 10 hours of courses relevant to family planning and reproductive health care (within five years of the date of application for the DFFP).

Full details and an application form are available on receipt of a self-addressed envelope from:

The Membership Department, Faculty of Family Planning and Reproductive Health Care, 27 Sussex Place, Regent's Park, London NW1 4RG, UK.



Caring for Patients - Leading for Quality:
the essentials of clinical governance

8th Annual-conference, AGM & Exhibition
10th - 12th June 1998
Holiday Inn, Nelson Dock, London

Delivering a truly high quality service for patients is the ultimate challenge for clinicians and clinical leaders.

Quality in terms of patient outcome, quality in terms of patient experience and expectations, quality in terms of clinical performance - this takes real commitment and real leadership. Caring for Patients, Leading for Quality explores the reality of clinical governance - what it means for patients, for clinicians and for the NHS.

At the conference, workshop sessions will provide focused interactive learning to develop your understanding of key areas of medical management. The plenary sessions will inform and inspire, bringing perspectives from both national figures in the NHS and international experts from the world of medical management.

For further information and a booking form call the BAMM office on 0161-491 4229.

The British Association of Medical Managers (BAMM)
Barnes Hospital, Kingsway, Cheadle, Cheshire SK8 2NY
Tel 0161-491 4229 Fax 0161-491 4254 email: bammm@premier.co.uk

IMPERIAL COLLEGE OF SCIENCE, TECHNOLOGY AND MEDICINE

MSc COURSE IN VASCULAR TECHNOLOGY AND MEDICINE

GENERAL INFORMATION

This full-time, 1 calendar year or part-time 2 calendar years' postgraduate course to be held at the St. Mary's Campus of Imperial College School of Medicine will run from October 1998 to September 1999. The aim is to provide a foundation course for those with medical degrees who wish to pursue a clinical or academic career in vascular medicine or surgery, and for scientists who would like to become vascular technologists or to pursue research in the broader field of vascular biology.

COURSE CONTENT

A. *Basic science and general topics:* Epidemiological methods, epidemiology and pathophysiology of arterial disease; vascular wall: structure and function, statistical methods; clinical trials; presenting and writing a scientific paper; writing a thesis; history of vascular surgery; principles of measurement, mechanics of the circulation, haemodynamics of vascular grafts; coagulation and fibrinolysis; computers in medicine; vascular audit; the microcirculation.

B. *Instrumentation and Basic Techniques:* Ultrasound; stress and duplex scanning; plethysmography; CT scanning; NMR; nuclear medicine in vascular disorders; angiography and venography; thermography; ECG; echocardiography; TcPO₂ and TcPCO₂; laser Doppler; principles of vascular procedures.

C. *Vascular Disorder:* hypertension; diabetes mellitus; hyperlipidaemia; lower limb ischaemia, extracranial cerebrovascular disease; renal and mesenteric ischaemia; costoclavicular syndrome, vasculogenic impotence, coronary artery disease, vascular malformation; Raynaud's syndrome; DVT and pulmonary embolism, chronic venous disorders, lymphatic disorders, aneurysmal disease.

The syllabus will be covered by a series of lectures, teaching rounds, outpatient clinics and specially organised seminars. In addition, each student will undertake a research project which should be written up and presented as a dissertation at the final examination.

APPLICATIONS AND ENQUIRIES

Applicants should hold a degree in medicine or science. United Kingdom science graduates would normally be expected to have obtained first or second class honours in their first degree; overseas qualifications will be considered individually.

Course Organisers.

ANDREW N. NICOLAIDES, MS, FRCS, Professor of Vascular Surgery
PETER SEVER, MB, BCH, PhD, FRCP, Professor of Clinical Pharmacology
RICHARD KITNEY, MSc, PhD, DIC, Professor of Biomedical Systems

For details and an application form, please contact The Deputy Registrar:
Mr W. Umpleby, Imperial College School of Medicine at St Mary's, Norfolk Place,
London W2 1PG. Tel: 0171 589 5111.



UNIVERSITY OF STIRLING
HEALTH CARE MANAGEMENT PROGRAMMES

MBA (Health Care Management)

The MBA in Health Care Management is a part-time modular programme of study developed in partnership with the British Medical Association. The programme is designed to meet the management development needs of senior hospital-based clinicians, general practitioners, consultants in public health medicine, dentists and senior health service managers. Its highly flexible modular structure is based on block-release attendance (21/2 days per block) comprising 5 core modules of two blocks each and 6 option modules of one block each. A resource pack is provided for each module. Entry to this programme is continuous throughout the academic year and participants may start with any of the modules on offer.

MSc in Health Care Management

This part-time modular programme is designed for nurses, other health care professionals and management trainees wishing to pursue a career in health care management. The aim of the programme is to equip participants with the management skills required for decision-making at both strategic and operational levels within the health service. The MSc programme is structured around block-release attendance (one week per block) and supported by resource packs. Applications are being considered for entry in September/October 1998.

For further information, please contact:

Dr Mauricea Lynch, Director of Health Care Management Programmes, University of Stirling, Stirling FK9 4LA.

Tel: 01786 466947. Fax: 01786 466944.

E-mail: healthcaremgmt@stir.ac.uk

PROVIDING HIGHER EDUCATION AND RESEARCH

UNIVERSITY OF NOTTINGHAM



*School of Medical and Surgical Sciences
and School of Biomedical Sciences*

**MSc in SPORTS MEDICINE
DIPLOMA in SPORTS MEDICINE**

The course leading to a MSc or Diploma in Sports Medicine in the Centre for Sports Medicine, Queen's Medical Centre will commence in October 1998. It will last for one year of full-time study. It is primarily intended for medical practitioners or those with an appropriate qualification in the healthcare professions with an interest in Sports Medicine, Sports Injuries and the promotion of health and exercise for the general public.

Applications are accepted throughout the year on a first-come first-served basis.

If you would like more details, please contact the Course Administrator, Centre for Sports Medicine, Orthopaedic and Accident Surgery, C Floor, West Block, Queen's Medical Centre, Nottingham NG7 2UH. Tel: +44 (0)115 9709774. e-mail: sports.med@nottingham.ac.uk or Fax: +44 (0)115 9194400 or +44 (0)115 9423656.

**The University aims to achieve the highest quality
in teaching and research.**

West of Scotland Postgraduate Medical Education Board

PGEA COURSES FOR 1998/99

A new programme of education courses for 98/99 is now available from the Board.

As well as a range of courses and information on these courses.

Three booklets are available: Dec, & Jan-Mar. Apply now in writing for Booklet 1 and we will forward Booklets 2 & 3 as available.

Apply to :- Mrs Elizabeth Duff, **Postgraduate Medical Education Board, 111 Whitehill Road, Glasgow G12 9LX**

The University of Sheffield

THE SCHOOL OF HEALTH AND RELATED RESEARCH

(PART TIME) MSc in HEALTH ECONOMICS & MANAGEMENT

Health care provision absorbs in the order of 6% of the Gross Domestic Product of the United Kingdom. In virtually all other industrialised countries the figure is higher. By any standards health is big business.

This innovative course, due to start again in September 1998, combines theory and practice of Health Economics with the essentials of Health Service Management.

The course is designed specifically for both health service managers and clinicians who wish to develop or improve their skills in the application of health economics and management techniques within their workplace, and those who wish to undertake research in health economics.

The two year programme requires attendance at the University on two and a half days per month for eight months per year.

Further details and application form from:

Malcolm Whitfield, Course Director,
School of Health and Related Research, Regent Court, Sheffield S1 4DA
- Tel: (0114) 222 0740. Fax: (0114) 272 4095.
Email: m.whitfield@sheffield.ac.uk

The University of Sheffield, founded in 1905, provides higher education within a research led environment. We engage equal opportunity for all.

St Bartholomew's and The Royal London School of Medicine and Dentistry

DEPARTMENT OF GENERAL PRACTICE AND PRIMARY CARE

M.Sc./POSTGRADUATE DIPLOMA IN PRIMARY CARE


Department of General Practice and Primary Care in conjunction with City University
A modular multi-disciplinary course designed to develop a strong foundation for a primary care led NHS.

Commencing September 1998
Two years part time/credit accumulation up to five years
Free standing individual modules available
The course will be of interest to those delivering health care in the community:
(Administrators, Dentists, Doctors, Health Visitors, Midwives, Nurses, Opticians, Pharmacists, Practice Managers, Social Workers)

Current Modules

Managing Change	Contemporary Issues
Clinical Effectiveness	Effective Education
Information Technology	Health Information
Research Methods	Advanced Research Methods
Social Context of Primary Care	*Research Project
	(*for those pursuing MSc Pathway)

For further information contact Mrs M Babb,
Department of General Practice and Primary Care, St Bartholomew's and the Royal London School of Medicine and Dentistry, Queen Mary & Westfield College, Medical Sciences Building, Mile End Road, London E1 4NS. Tel: 0171 295 7949 Fax: 0171 982 6396 Email: m.a.babb@mds.qmw.ac.uk



One Week Course

for

GENERAL PRACTITIONERS

at

GUY'S HOSPITAL

11 - 15 MAY 1998

Knowledge Update, Skills sessions

Visits to specialist Departments

COURSE FEE £340

30 hours PGEA approval is being sought

Application forms from: Postgraduate Medical Department, Sherman Education Centre, Guy's Hospital, London SE1 9RT
Tel: 0171 955 4190 Fax: 0171 955 4913

UMDS
GUY'S AND ST THOMAS' MEDICAL AND DENTAL SCHOOL



**CJD: a priority for care and support:
2nd national conference on CJD:
Thursday, 16 April, University of Warwick**

Aimed at carers, relatives, health, social services and voluntary sector workers this conference will define and identify the essential forms of care and support most needed by carers of people with CJD in all its forms; it will also provide a forum for health and social service professionals to outline current and future service responses.

Keynote speaker: Dr Richard Harvey, consultant neurologist at the National Hospital for Neurology and Neurosurgery and Alzheimer's Disease Society Research Fellow: CJD; the present and future prospects for clinical knowledge and support.

The conference will include many opportunities for participation and learning about the various forms of CJD and the types of support needed through a series of workshops led by key professionals from the National CJD Surveillance Unit, the World Health Organisation, Institute of Child Health and the Prion Clinic at St Mary's Hospital Paddington.

Cost: professionals £50; Alzheimer's Disease Society members £35: carers and relatives free.

Booking forms available from: Gillian Turner, National CJD Coordinator, Birchwood, Heath Top, Ashley Heath, Market Drayton, Salop, TF9 4QR. Telephone: 01630 673993. Closing date for bookings: 9 April 1998.

Alzheimer's Disease Society • Creutzfeldt-Jakob Disease Support Network • Gordon House • 10 Greencoat Place • London SW1P 1PH. Telephone: 0171 306 0606 • Fax: 0171 306 0808

**DISTANCE LEARNING
MScEcon DIPLOMA**

**Do you handle information?
Do you want to equip yourself with transferable
information management skills?**

**Health Information
Management**

Two year Diploma and three year MScEcon programmes by distance learning for graduates and suitably experienced non-graduates who perceived that information skills are vital to their professional development. These established programmes offer coverage which includes: **information needs analysis; electronic patient record; systems analysis; managing the knowledge base for EBM.**

These programmes carry professional accreditations and can contribute to vocational and professional awards.

Next entry: September 1998.

For details contact:

Christine Urquhart (Programme Director)

Tel: 01970 622159 Fax: 01970 622190

E-mail: cju@aber.ac.uk

Department of Information and Library Studies
University of Wales, Aberystwyth, Llanbadarn
Fawr, Aberystwyth, Ceredigion SY22 3AS



THE WOUNDED HEALER

**AN OPPORTUNITY TO EXPLORE YOURSELF IN
RELATION TO THE CHALLENGES AND STRESSES
OF PRACTICING MEDICINE.**

**JUNE 7TH-13TH
IN THE SCOTTISH HIGHLANDS**

FOR FURTHER DETAILS CONTACT:

**Fiona Fraser,
Postgraduate Medical Education,
Raigmore Hospital,
Inverness IV2 3UJ.
Telephone: 01463 705201**



RESEARCH SYMPOSIUM

Opportunities for Research in General Practice and Primary Care

Thursday May 21st 1998
Regent's College, London

The Royal College of General Practitioners' Research Group's Symposium is being held to respond to the changing funding opportunities for primary care research and the emergence of new primary care research networks and individual research practices. The event is innovative and interactive and will cover issues of importance to all primary care professionals.

The symposium will be divided into a number of strands covering presentations, workshops and posters and will be headed by three prestigious keynote speakers:

- **Professor John Swales** - Director of R&D for the NHS
- **Professor David Mant** - Chairman of the National Working Group on R&D in Primary Care.
- **Professor George Radda** - Chief Executive of the Medical Research Council.

Why this event will appeal to you:

- includes powerful addresses by 3 keynote speakers setting policy for NHS R&D
- covers the implementation of the new R&D strategy and funding arrangements in primary care research
- links research with multiprofessional education and training issues in primary care
- relevant to individuals, research practices and networks
- opportunities for novice and experienced researchers to share ideas

PGEA applied for. Fee to be confirmed.

For further details of the above event please contact.

RCGP Courses & Conference Unit, 14 Princes Gate, London SW7 1PU.

Tel: 0171 823 9703. Fax: 0171 589 1428. Email: courses@rcgp.org.uk



THE INSTITUTE OF
HEALTH SERVICES
MANAGEMENT

Better Management • Better Health

Health Policy in Action

Application has been made for this conference to be recognised for
P.G.E.A. accreditation purposes.

Purpose: To consider and discuss issues arising from the White Paper The New NHS-Modern Dependable, Health Action Zones, and the Green Paper on Public Health, and their impact upon organisation and service provision in the future NHS.

Making the White Paper work - Balance of Power

Dr Simon Turley, General Practitioner

Evidence Based Medicine versus Clinical Reality

Dr Terry Stacey, Director of Research and Development,
South Thames NHS Executive

The Pharmaceutical Perspective

Public Health Green Paper

Dr John Shanks, Director of Public Health, Croydon HA.

Workshops

Health Action Zones -

How will they benefit resident populations?
Working in partnerships with other agencies.

Primary Care Trusts - What does the future hold?

Challenges in Planning long term health care for the elderly

Dr Ian Carpenter, Senior Lecturer, Health care for the
Elderly, Kings College School of Medicine and Dentistry

South Thames IHSM Regional Annual Conference

8-9 May 1998 at the Ramada Hotel, Gatwick

Sponsors: Pfizer, Zeneca Pharma, Astra Pharmaceuticals, Dearden Management, GlaxoWellcome, Milton Carter, Schering Health Care Ltd.

Further information from Conference co-ordinator:

Maggie Mansell, 30 Pollards Hill East, Norbury, London, SW16 4UT. Tel: 0181 679 3733



3rd National Conference Managing Drug Users in General Practice

*'New NHS - Same Dilemmas:
Caring for drug users in the New NHS'*

Friday 24th April 1998

Royal College of General Practitioners

HIV / AIDS Working Party

Venue: Murrayfield Rugby Stadium Conference Centre, Edinburgh

A one day conference to continue the debate about
working with drug users in General Practice:

- The issues raised by the New NHS
- Beyond Methadone
- Research agenda, Effective Interventions.

The conference is for those who are currently working
with this client group or want to become involved, to
examine and explore current practice and concerns.
PGEA applied for. Delegate Fee - £60.00 + V.A.T.
(Total=£70.50)

***This conference was over subscribed
last year so book early!***

For further details and application forms please contact:

**RCGP Courses & Conferences Unit,
14 Princes Gate, London SW7 1PU.
Tel: 0171 823 9703 Fax: 0171 589 1428
Email: courses@rcgp.org.uk**

U^H University of Hertfordshire

Faculty of Health and Human Sciences

Multi-Professional Issues in Health and Social Care

the impact on education and workforce planning

A One Day National Conference

Wednesday 6 May 1998

The conference is aimed at healthcare and social services managers, and
educators interested in professional education and workforce planning.

Keynote addresses and workshops will explore the following issues:

- The shape of the future workforce in health and social care
- The feasibility of shared teaching and learning between professions
- The future role of the health care professional

Keynote speakers are:

Gill Newton, Head of Workforce Planning & Education, NHS Executive;
Dr Matt Muijen, Director, Sainsbury Centre for Mental Health;
Professor Janet Finch, Vice Chancellor, Keele University and Chair of
CVCP Health Professions Committee.

For registration details please contact:

Mrs V Proffitt, Deputy Faculty Registrar,
Faculty of Health & Human Sciences, University of Hertfordshire,
College Lane, Hatfield, Herts AL10 9AB

Tel: 01707 284979/285277 Fax: 01707 284415

Dedicated to excellence in teaching, learning and research in higher education

FELLOWSHIP AND AWARDS COMMITTEES

The Fellowship Committee will be meeting on 27 May 1998 and members are asked to give thought to appropriate nominations. Fellowship by nomination forms need to be received by the end of April and the President will be writing to all faculties shortly.



RCGP COLLEGE AWARDS

The Awards Committee will be meeting on 3 June 1998 and nominations are also sought for this year's College Awards. A full list of awards is now available in the new booklet *College Awards* on request. This gives details of all College Awards: both by nomination and competition.

THE JOHN FRY AWARD

Nominations are sought for the 1998 John Fry Award. This award is in the form of a silver medal which is presented at the College AGM. It is presented to a younger Member or Fellow of the College who has promoted the discipline of General Practice through research and publishing as a practising GP. Nominations for the Award should be made in confidence to the Chairman of the Awards Committee, Royal College of General Practitioners, 14 Princes Gate, London, SW7 1PU. They should include supporting information on the work of the nominee aged 45 years or younger at the closing date of the award and should be accompanied by a submission from the nominating/sponsoring College member, together with an additional letter of support. Additional details are available from the Clerk to the Awards Committee at the College for those interested in the Award.

CLOSING DATE FOR APPLICATIONS: 30 April 1998

THE PATIENT PARTICIPATION AWARD

Nominations are sought for the 1998 Patient Participation Award. The award which is to the value of £1000 is to be used either to benefit the patients of a practice or to further patient participation in the UK. Applications or nominations may be accepted from any member of the practice team, patient group, or patient of a practice. For a copy of the criteria please contact the Clerk to the Awards Committee.

CLOSING DATE FOR APPLICATIONS: 30 June 1998

THE BILL STYLES MEMORIAL AWARD

The Royal College of General Practitioners invites applications for this year's Bill Styles Memorial Award. The Bill Styles Memorial Award is to be presented to a younger Member or Associate of the College. It is intended to encourage younger general practitioners to further their education either within the UK or by travel abroad. Applicants must be Members or Associates of the Royal College of General Practitioners and aged 35 years or younger at the closing date of the award.

The award takes the form of a project grant which will be awarded in two stages: half at the Annual General Meeting of the College in November and half on completion of the final report. A certificate signed by the President and Chairman will be presented along with the cheque at the AGM. Additional details and criteria are available from the Clerk to the Awards Committee.

CLOSING DATE FOR APPLICATIONS: 30 June 1998

Further details and application form available from: Royal College of General Practitioners, 14 Princes Gate, Hyde Park, London, SW7 1PU. Tel: 0171 581 3232. Fax: 0171 589 3145.

Catherine Messent, Clerk of the Awards Committee - Ext 246. Email: cmessent@rcgp.org.uk.

or Mayuri Patel, Assistant Committee Clerk to the Awards Committee - Ext 233. Email: mpatel@rcgp.org.uk

FULLY
UPDATED

The MRCGP Examination

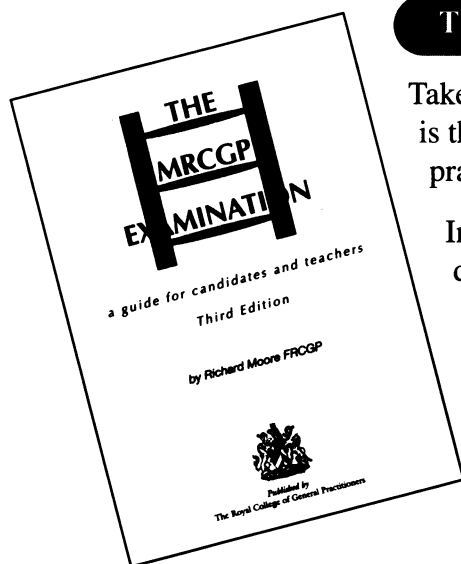
a guide for candidates and teachers

NEW!
THIRD
EDITION

Edited by Richard Moore FRCGP

Publication date March 1998

Price £21.50 - £19.35 for RCGP members and associates



The definitive book on how to approach this important hurdle

Taken by about 2000 candidates every year, the MRCGP examination is the most important professional qualification for those in general practice and related disciplines.

In order to remain relevant to today's GPs, the exam has grown, developed and become fully modular and the new third edition of this successful book reflects these important changes. Written by a team of experienced authors who are all MRCGP examiners, and edited by Richard Moore, author of the first two editions, this book will prove an indispensable aid to passing the exam.

Of great value to candidates, trainers, course organizers and vocational training schemes, this indispensable workbook covers:

- the origin and development of the exam
- the prose paper
- the relationship of the MRCGP to summative assessment
- the machine marked paper
- strategies for preparation
- the orals
- the consulting skills assessment
- after the MRCGP

Benefit from the unique insights of RCGP experts Peter Burrows, Declan Dwyer, Steve Field, David Haslam, Roger Neighbour, David Sales, Peter Tate, Val Wass and Andrew Wilson.

Praise for the second edition:

"This excellent book ... provides a splendid opportunity for trainees and other potential candidates to familiarise themselves with this examination ... well written in a lucid and concise style ... an excellent book." Family Practice
"It is the best guide currently available ... for the preparation ... of this exam."

East Anglia Faculty

Last year, the second edition of the MRCGP Examination Book reached number four in the BMJ's top ten bestselling medical books.

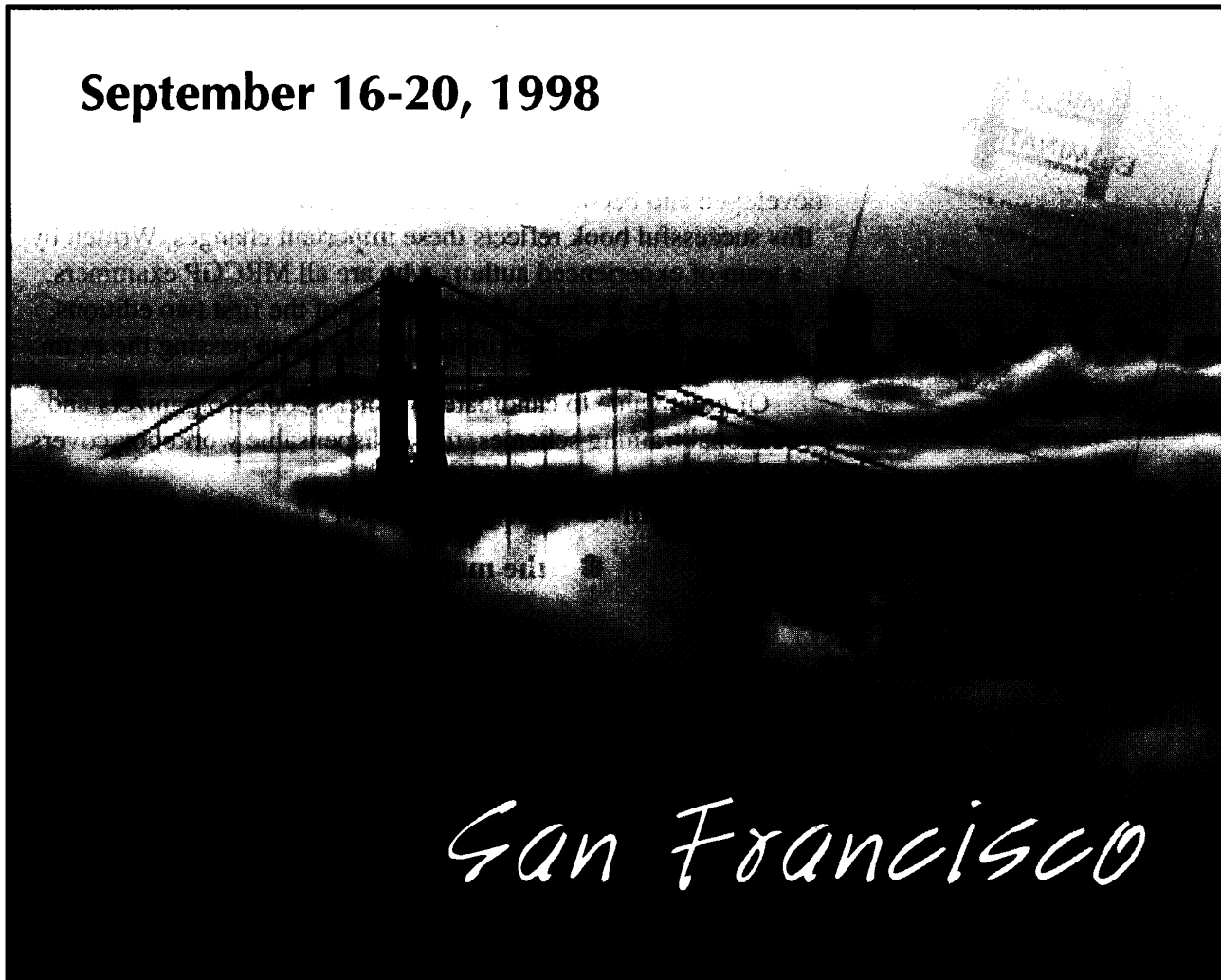
Only
£19.35 to RCGP
members &
associates

To order ring RCGP Sales on 0171 823 9698 (9.30-4.30), fax to 0171 225 0629 or e-mail to sales@rcgp.org.uk. Credit card orders can be placed on 0171 225 3048.

*50th
Annual*

American Academy of Family Physicians Scientific Assembly

September 16-20, 1998



The premier educational meeting for family physicians



American Academy of Family Physicians
The doctors who specialize in you

8880 Ward Parkway, Kansas City, Missouri 64114
E-mail: assemblyinfo@aafp.org

THE ROYAL MARSDEN NHS TRUST

Chelsea site:

Fulham Road, London SW3 6JJ

Tel: 0171 352 8171

Sutton site:

Downs Road, Sutton, Surrey SM2 5PT

Tel: 0181 642 6011



The Royal Marsden NHS Trust, based on two sites, (Sutton in Surrey, 158 beds; Chelsea, London, 167 beds) constitutes an international centre of excellence for treatment, care, education, research and development in cancer.

The Royal Marsden is a specialist cancer hospital providing a comprehensive range of services for GP and tertiary referrals for both common and rarer cancers.

A multidisciplinary approach is adopted throughout the Trust to ensure the interaction of a variety of clinical specialists and professional groups required for high quality cancer treatment and patient care.

The Royal Marsden offers the following services:

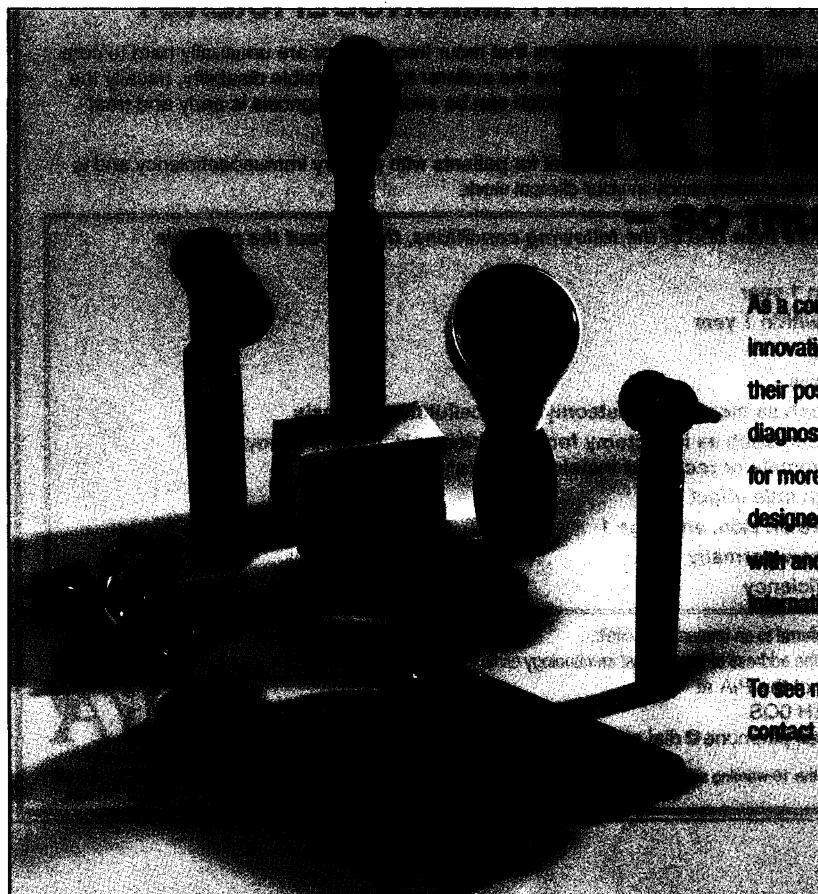
- Rapid Access – average waiting time from referral to outpatient appointment – 9 days
- Competitive prices together with extremely high standards of patient care
- Commitment to patient focused care
- ISO 9001 quality standard awarded for Radiotherapy Services
- Comprehensive breast diagnostic service
- Expert Second Opinions
- Service Directory and GP price list available on request
- Dedicated Private In/Out patient facilities at both sites

GPs wishing to make a referral to The Royal Marsden should contact the appropriate clinical unit direct. The clinical units are organised within groups as follows:



- Breast Group
- Gastro Intestinal Group
- Haemato-Oncology Group
- Head & Neck and Thyroid Group
- Lung Group
- Paediatric, Neuro-Oncology & Pharmacology Group
- Pelvic Group
- Skin & Soft Tissue Group

For further information regarding our services and inclusion on our GP mailing list, please contact the GP Liaison Manager at our Chelsea branch on tel. 0171 352 2583/fax 0171 352 5960.



ester

— so much more to see!

As a company committed to product innovation and quality, Riester maintain their position as a leading manufacturer of diagnostic instruments and have done so for more than 50 years. All products are designed and manufactured to comply with and surpass both national and international standards.

To see more of the Riester range, please contact seca at the address below.

Riester
seca
Precision for health

seca ltd, 40 Barn Street, Birmingham, B5 5QB
Tel 0121 643 9349 Fax 0121 633 3403



Records Management Solutions

Can your staff find patient notes in a split second? Do they know which cabinet or shelf they're on, which drawer, their exact position - even if they're in the back of a Doctor's car?

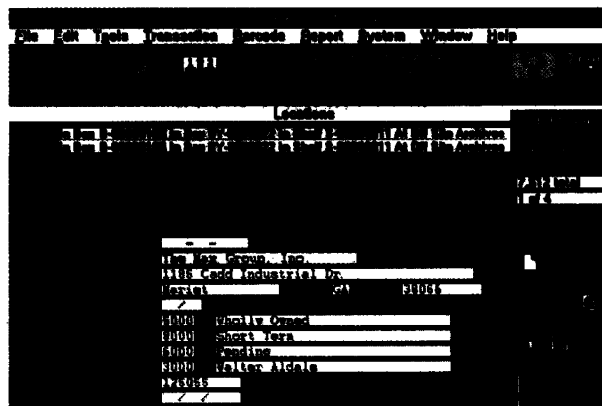
We can show you how.

There are easy ways of doing this that neither cost a fortune, nor call for the redesign of your premises to give you more space.

Our barcode tracking system can tell you where notes are: who's got the, why and how long they're had them - in a split second. File Tracker can track activity, schedule appointments such as immunisation dates, differentiate between active or inactive notes, the list is endless, it can do whatever you want it to.

Cave Tab is very experienced in providing solutions for General Practice. Numerous Surgeries' around the Country have benefited from solutions we've provided. We hold regular regional workshops and are often invited to attend Authority Practice Management Meetings to discuss record management and demonstrate this system. Further information and system demonstration is available on request and our Consultancy Services are without obligation and may be of great use if reorganisation is required.

Call free on 0800 616347 to arrange for your practice, or a group of local practices, presentation.



THE 10 WARNING SIGNS OF PRIMARY IMMUNODEFICIENCY

Primary immunodeficiency disorders cause children and adults to have infections that recur frequently or are unusually hard to cure. They are often not diagnosed or diagnosed only after a long delay, by which time the sufferer has irreversible disability, usually the result of reduced respiratory function. Although quite rare, they cause misery which can be avoided if diagnosis is early and treatment is competent.

The Primary Immunodeficiency Association (PIA) exists to work for a better deal for patients with primary immunodeficiency and is keen that you remember the possibility of primary immunodeficiency in your clinical work.

If a patient, child or adult, is affected by more than one of the following conditions, think about the possible presence of primary immunodeficiency.

1. Eight or more new ear infections within 1 year
2. Two or more serious sinus infections within 1 year
3. Two or more pneumonias within 1 year
4. Recurrent, deep skin or organ abscesses
5. Two or more deep-seated infections such as meningitis, osteomyelitis, cellulitis, or sepsis
6. Surgical intervention for chronic infection such as lobectomy for bronchiectasis, tonsillectomy, adenoidectomy, recurrent insertion of grommets or recurrent incision of boils
7. Two or more months on antibiotics with little effect
8. Persistent thrush in mouth or elsewhere on skin, after age 1
9. Failure of an infant to gain weight or grow normally
10. A family history of primary immunodeficiency

Patients with a possible primary immunodeficiency deserve referral to an immunology clinic.

If you require information about primary immunodeficiency or the address of the nearest immunology clinic the PIA can help.

Please contact David Watters, General Secretary of the PIA at

Alliance House, 12 Caxton Street, LONDON SW1H 0QS

Phone 0171-976 7640 Fax 0171-976 7641 E-mail pimmune@dial.pipex.com

The PIA thank the Jeffrey Modell Foundation for permission to use the 10 warning signs and the Boots Company for their financial assistance.

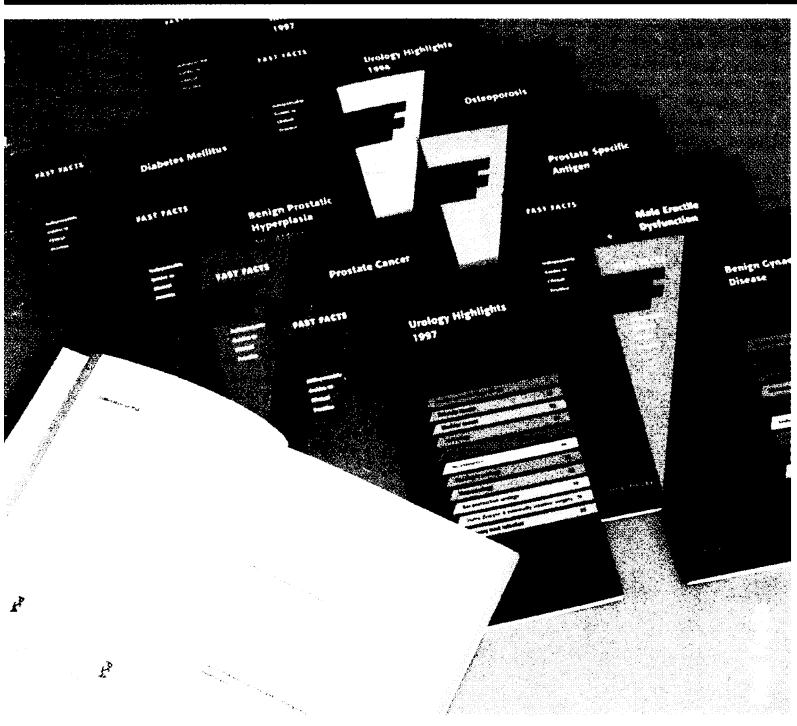


HEALTH PRESS

Medical publishing at its best



HEALTH PRESS



Fast Facts

Indispensable guides to clinical practice

- colourful format allows quick and easy access to the latest information on key topics
- authored by internationally renowned experts
- will cover the whole of medicine by the millennium – so start collecting now

Patient Pictures

Clinical drawings for your patients

- time-saving books for doctors and nurses when describing medical conditions and treatments
- copyright-free for educational purposes – stand-alone pages can be copied and given to the patient or carer to take home
- reviewed by lay people and medical professionals to make sure patients get the information they want



All books

£10.95 in the UK, **£11.95** or **US\$19.95** overseas

Includes postage and packing

**Contact
us today
for a full
list of
titles!**

Health Press Limited

Elizabeth House
Queen Street
Abingdon
Oxford OX14 3JR
UK

Telephone

+44 (0)1235 523233

Fax

+44 (0)1235 523238

E-mail

post@healthpress.co.uk

Or visit our website at **www.healthpress.co.uk**

Prescriber



One day service
management Approved

PRACTICE COMPUTING

Computers for the rest of us

IT for GPs made simple, a conference and workshop

Venue & Dates:

Newcastle 15th April

Leeds 9th June

Stratford 22nd September

Gatwick 10th October

11th November

N. London TBA February 1999

Manchester: TBA April 1999

Edinburgh: TBA May 1999

S. London: TBA June 1999

Practice Computing magazine is holding a series of conferences and workshops around the country aimed at presenting GP IT in an easily understood and digestible style.

Speakers will be briefed to avoid technical terms where possible, and to concentrate on describing solutions which are achievable by ordinary practices which do not have a special interest in IT.

This travelling one day PGEA Accredited Conference

will run from 0930 to 1715 and cover:

The Practice System Today, The Practice System Tomorrow

Presentations by GP computer suppliers, The Paperless Practice for Mere Mortals

Doctor's Little Helper, Open Forum, The Internet, NHSnet

The day delegate rate is £95 plus VAT and includes lunch, refreshments and an information pack. **NUMBERS ARE LIMITED** so please book early to avoid disappointment by returning the form below or phone Sam Coghill on 01483 477417 or Denise Scholey on 01483 477400 for telephone confirmation or any queries.

Registration Form

By Fax

First Name: _____

Second Name: (Mr/Ms/Ms) _____

Surname: _____

Job Title: _____

Address: _____

Postcode: _____

Telephone: _____

Fax: _____

Delegates: _____

Number of £ _____

Please include delegate names in the _____