

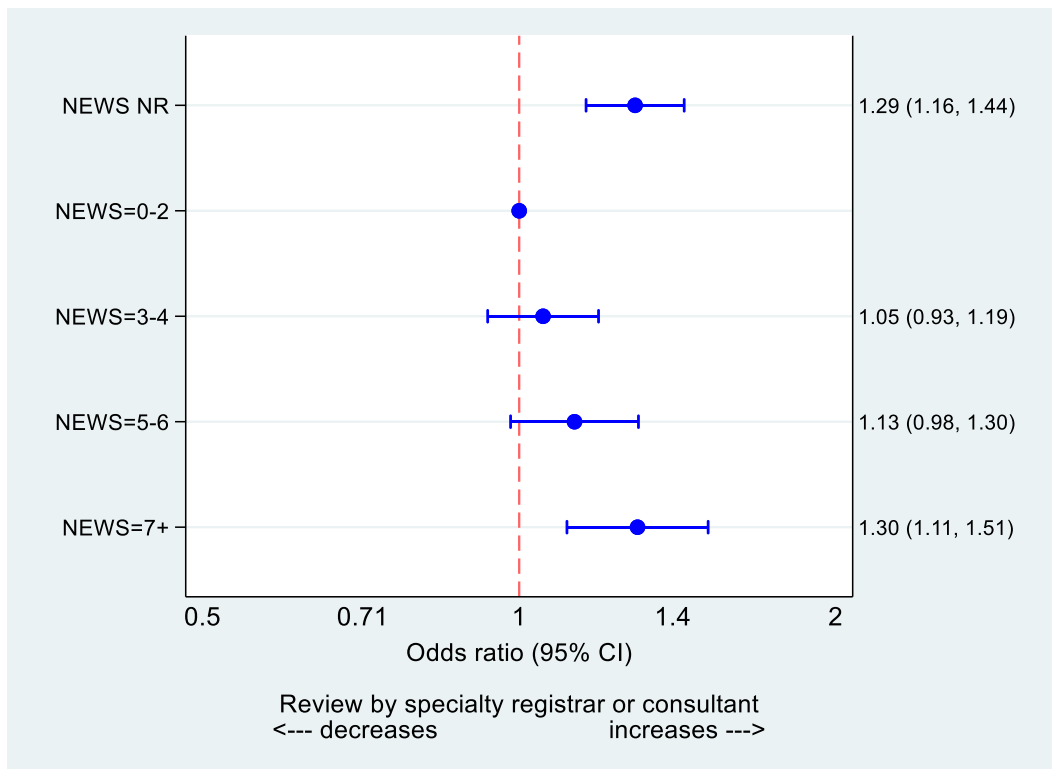
Figure S1: NEWS score card

PHYSIOLOGICAL PARAMETERS	3	2	1	0	1	2	3
Respiration Rate	≤8		9 - 11	12 - 20		21 - 24	≥25
Oxygen Saturations	≤91	92 - 93	94 - 95	≥96			
Any Supplemental Oxygen		Yes		No			
Temperature	≤35.0		35.1 - 36.0	36.1 - 38.0	38.1 - 39.0	≥39.1	
Systolic BP	≤90	91 - 100	101 - 110	111 - 219			≥220
Heart Rate	≤40		41 - 50	51 - 90	91 - 110	111 - 130	≥131
Level of Consciousness				A			V, P, or U

Figure S2: NEWS2 score card

Physiological parameter	3	2	1	Score 0	1	2	3
Respiration rate (per minute)	≤8		9-11	12-20		21-24	≥25
SpO ₂ Scale 1 (%)	≤91	92-93	94-95	≥96			
SpO ₂ Scale 2 (%)	≤83	84-85	86-87	88-92 ≥93 on air	93-94 on oxygen	95-96 on oxygen	≥97 on oxygen
Air or oxygen?		Oxygen		Air			
Systolic blood pressure (mmHg)	≤90	91-100	101-110	111-219			≥220
Pulse (per minute)	≤40		41-50	51-90	91-110	111-130	≥131
Consciousness				Alert			CVPU
Temperature (°C)	≤35.0		35.1-36.0	36.1-38.0	38.1-39.0	≥39.1	

Figure S3: Review by specialty registrar or consultant by NEWS on referral



Patients not reviewed by specialty registrar or consultant were reviewed by foundation year 1, foundation year 2, senior house officer, GP or 'other' doctors (see Table 1 for details).

Figure S4: ICU admission and/or mortality by NEWS on referral

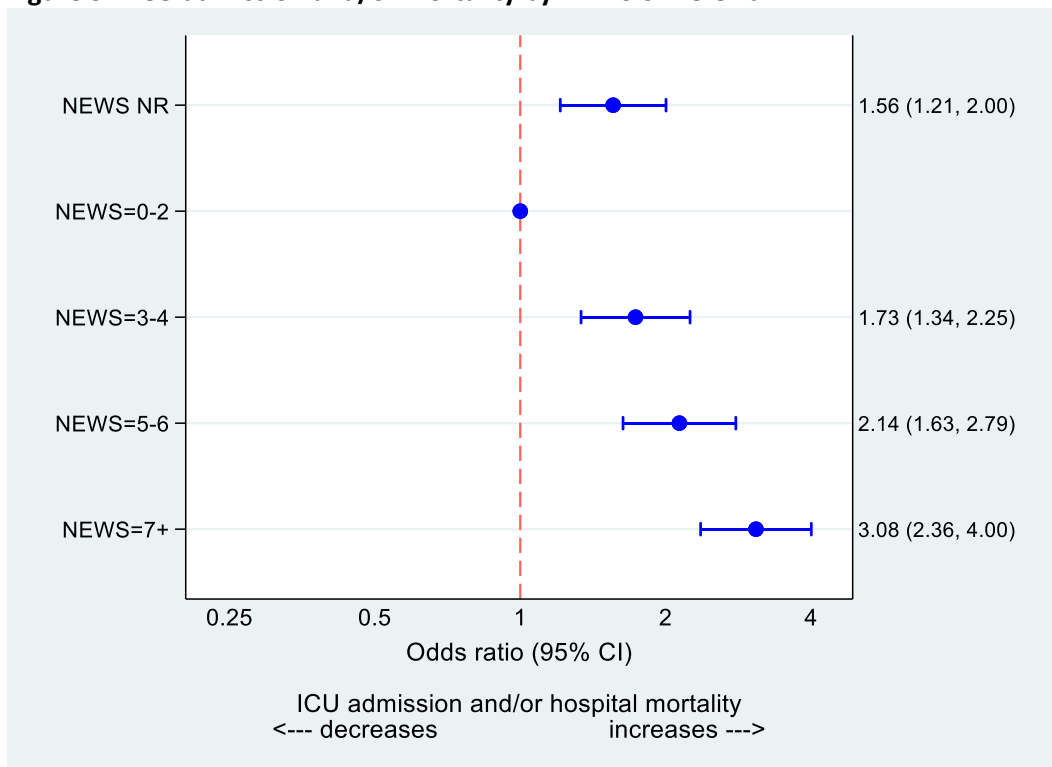


Figure S5: Suspicion of Sepsis

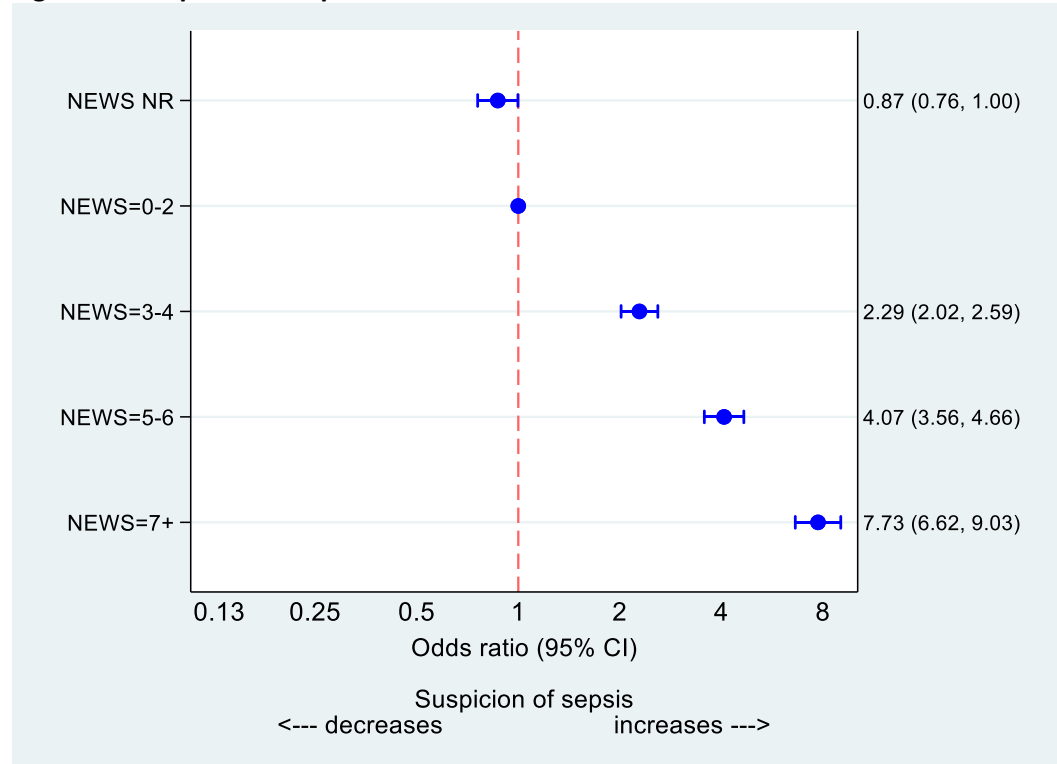


Figure S6: 30-day mortality by NEWS on referral

